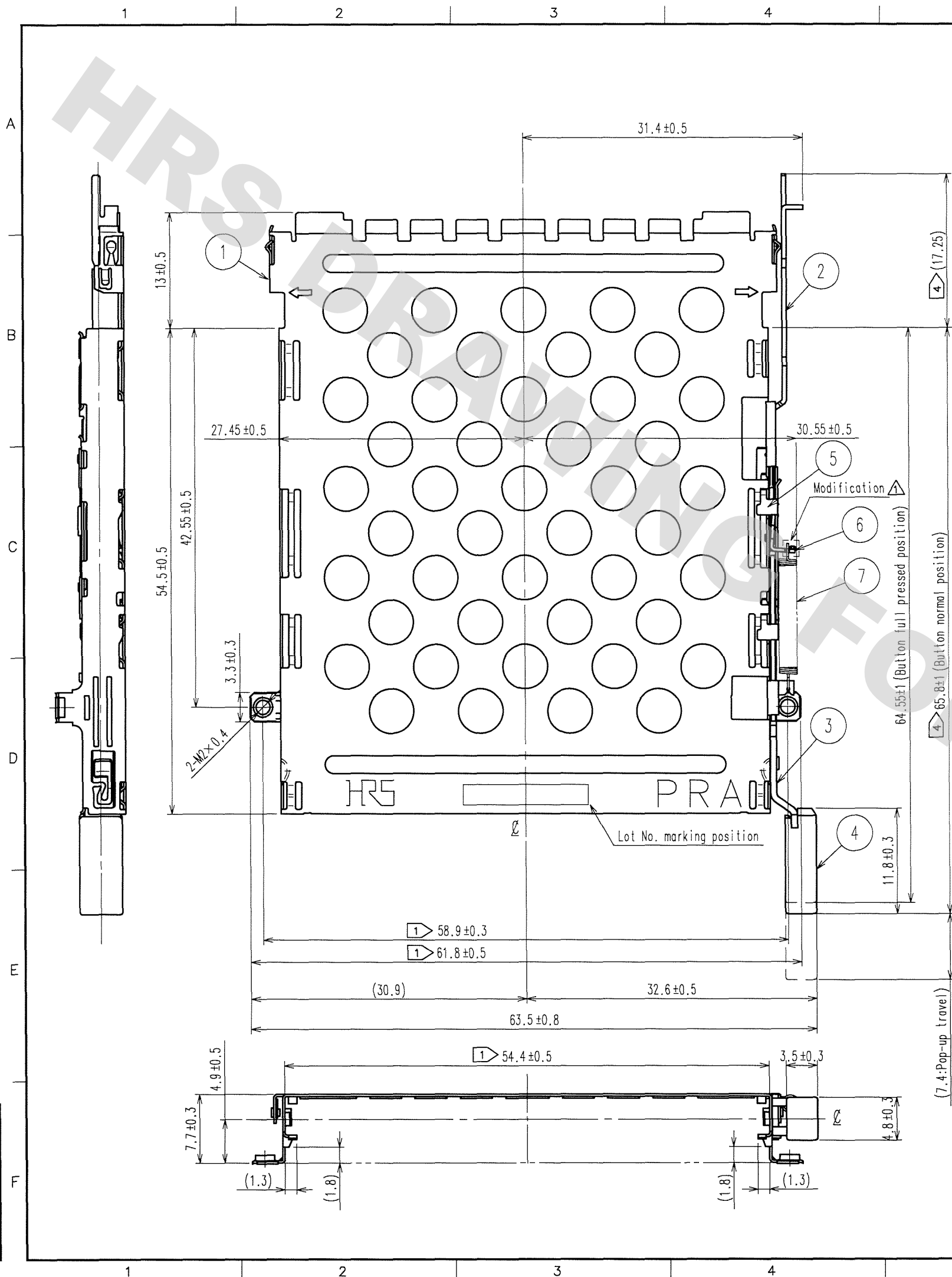


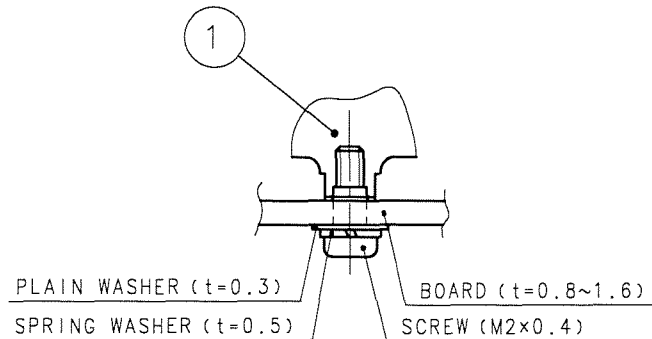
DRAWING FOR REFERENCE: This is subject to change without notice
08/11/2012

TO
PCK



COUNT	DESCRIPTION OF REVISIONS	BY	CHKD	DATE	COUNT	DESCRIPTION OF REVISIONS	BY	CHKD	DATE
1	DIS-F-001715	H.S.	J.S.	07.03.01					

FIG. 1 Thread tightening (recommended)

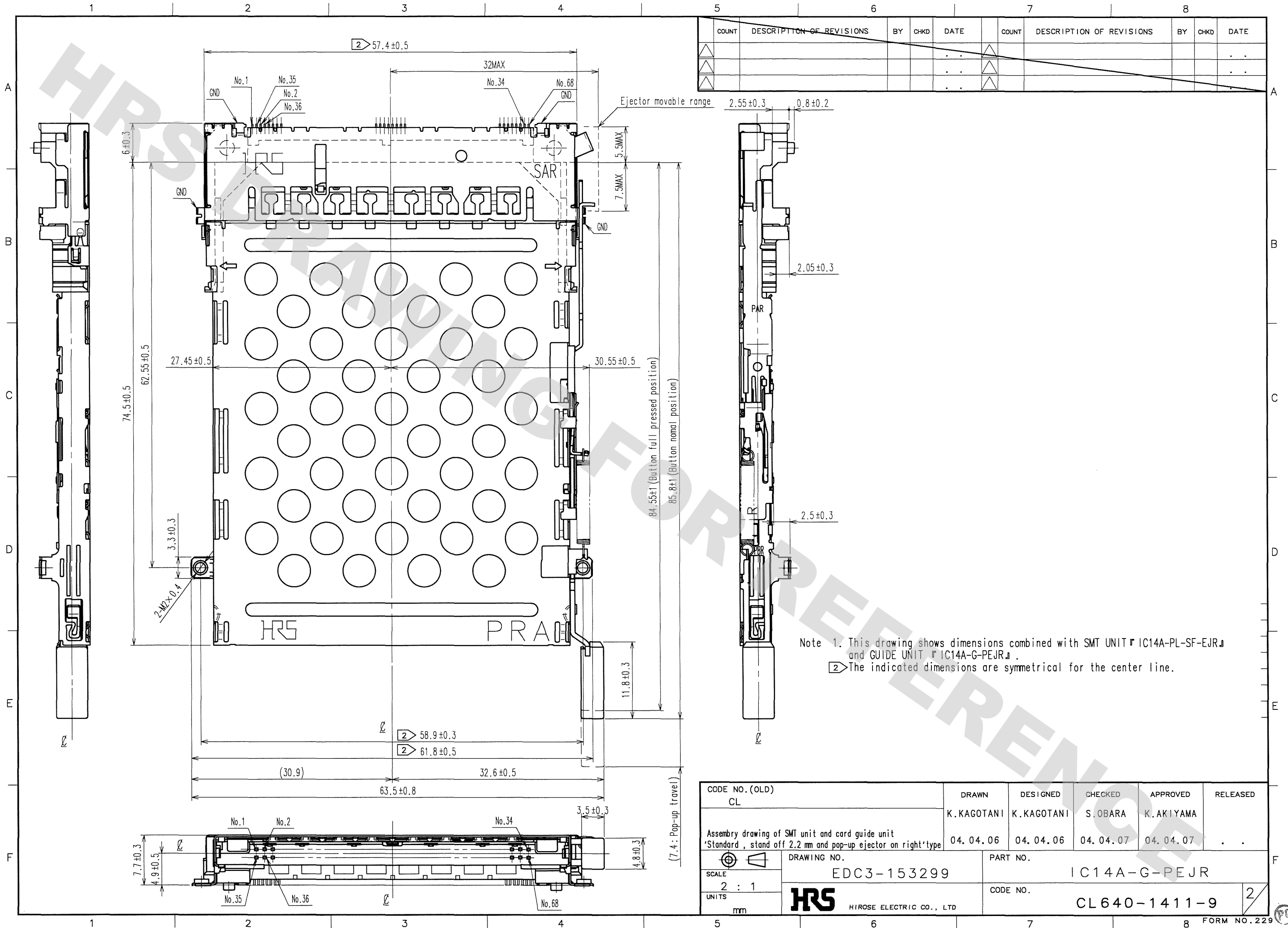


- Notes
- These dimensions are symmetrical for the center line.
 - This product is available combination with SMT UNIT 『IC14A-PL*-SF-EJR』.
 - This product to be assembled after mounting SMT UNIT 『IC14A-PL*-SF-EJR』.
 - These () dimensions are on delivery, be sure to check that the fittings are at the position shown on assembling.
 - Fasten then by SCREW, PLAIN WASHER, SPRING WASHER from the below of the board.
RECOMMENDED TIGHTENING : 0.14~0.18N.m

4	PBT	BLACK	UL94V-0	7	STEEL	
1~3	STAINLESS STEEL			5,6	STAINLESS STEEL	
NO.	MATERIAL	FINISH, REMARKS	NO.	MATERIAL	FINISH, REMARKS	
CODE NO. (OLD) CL			DRAWN	DESIGNED	CHECKED	APPROVED
			K.KAGOTANI	K.KAGOTANI	S.OBARA	K.AKIYAMA
			04.04.06	04.04.06	04.04.07	04.04.07
'Stand off 2.2 mm and pop-up ejector on right' type						
DRAWING NO. EDC3-153299			PART NO. IC14A-G-PEJR			
SCALE 2: 1			CODE NO. CL640-1411-9			
UNITS mm						

DRAWING FOR REFERENCE: This is subject to change without notice
08/11/2012

TO
PCK



CODE NO. (OLD) CL	DRAWN K.KAGOTANI	DESIGNED K.KAGOTANI	CHECKED S.OBARA	APPROVED K.AKIYAMA	RELEASED
Assembly drawing of SMT unit and card guide unit 'Standard', stand off 2.2 mm and pop-up ejector on right type	04. 04. 06	04. 04. 06	04. 04. 07	04. 04. 07	
SCALE 2 : 1 UNITS mm	DRAWING NO. EDC3-153299	PART NO. IC14A-G-PEJR	CODE NO. CL640-1411-9	2	
	HIROSE ELECTRIC CO., LTD				

DRAWING FOR REFERENCE: This is subject to change without notice
08/11/2012

TO
PCK

