

4

3

2

1

THIS DRAWING IS UNPUBLISHED.

RELEASED FOR PUBLICATION

© COPYRIGHT

ALL RIGHTS RESERVED.

LOC

DIST

REVISIONS

P	LTR	DESCRIPTION	DATE	DWN	APVD
	A2	ECR-14-002336	18FEB2014	GK	HMR

REPLACED BY OCEAN STYLE APPLICATOR PART  
NUMBER 2151373-1

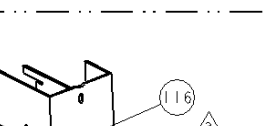
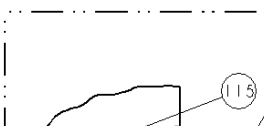
FOR REPLACEMENT PARTS FOR APPLICATOR 1855146  
REFER TO ADDITIONAL PAGE(S). SPARE PARTS KIT (IF LISTED)  
WILL REMAIN AVAILABLE.

THE REPLACEMENT OCEAN STYLE APPLICATOR HAS THE  
SAME TERMINATOR/PRESS INTERFACE AS APPLICATOR  
1855146

THIS DRAWING IS A CONTROLLED DOCUMENT.		DWN	GOPALAKRISHNA HV			
		CHK	RAGHAVENDRA			
		APVD	RAGHAVENDRA			
		PRODUCT SPEC				
		APPLICATION SPEC				
		WEIGHT				
		CUSTOMER DRAWING		SCALE	SHEET 1 OF 2	
				REV	A2	

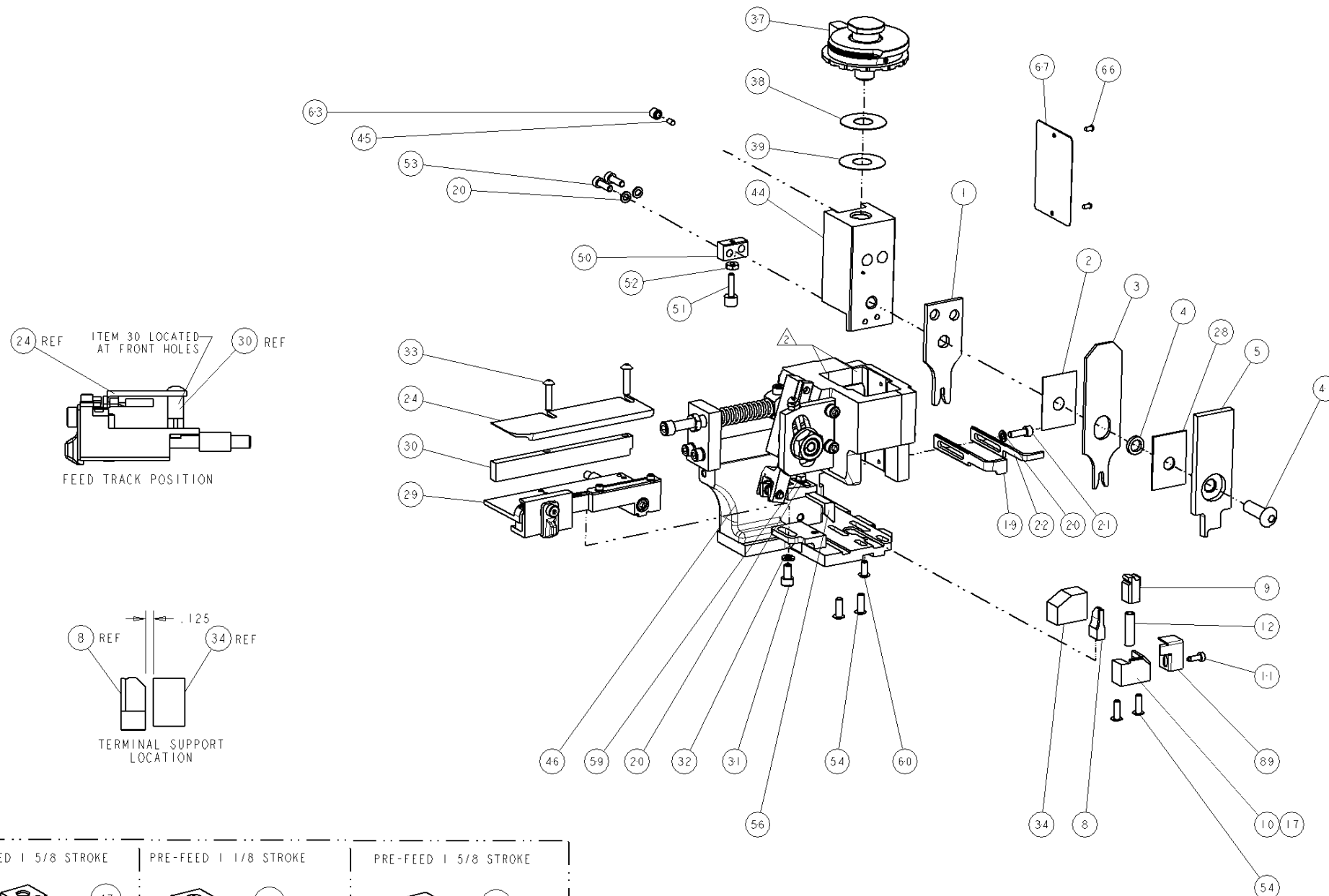
TE Connectivity			
NAME			
FINE ADJUST SIDE FEED HDM APPLICATOR			
SIZE	CAGE CODE	DRAWING NO	RESTRICTED TO
A3		©- 1855146	

DIMENSIONS:	TOLERANCES UNLESS OTHERWISE SPECIFIED:
	0 PLC ±
	1 PLC ±
	2 PLC ±
	3 PLC ±
	4 PLC ±
MATERIAL	FINISH

6	5
 <p>AMP-O-ELECTRIC TERM GUARD</p>	 <p>G TERMINATOR GUARD</p>


12		1							
LOC	DIST	REVISIONS							
A	66	F	LTR	DESCRIPTION			DATE	DWN	APPROV
			A	RELEASED			07NOV2006	MEH	TE
			A	ADDED APPLIED WIRES ECR-10-000819			21JAN2009	SZ	GB

**\* WARNING**  
ON INSTALLATION, SET WIRE  
DISC TO LARGEST WIRE SIZE  
SETTING. USE OF SETTINGS  
BELOW MIN. REQUIRED CRIMP  
HEIGHT SETTING WILL CAUSE  
DAMAGE TO CRIMP TOOLING.



3	-	-	-	REF	-	..	455749-1	GUARD WINDOW	116
3	-	-	REF	-	-	..	679532-1	INSERT, GUARD	115
	-	1	1	1	1	-	1-21002-7	SCR, BTN SKT HD CAP 6-32 X .375	91
	-	1	1	1	1	-	318563-1	GUARD, FRONT CHIP	89
	-	1	1	1	1	-	4088040	SF APPL INST 408-8040	72
	-	1	1	1	1	-	217238-1	GENERAL INSTRUCTION PKG	71
	-	1	1	1	1	-	461264-5	PLATE, IDENTIFICATION	67
	-	2	2	2	2	-	21017-2	SCREW, DRIVE	66
	-	1	1	1	1	-	21009-2	SCR, SET, SELF LOCKING 1/4-20 X .250	6
	-	1	1	1	1	-	22733-8	SCR, BHSC, SELF-LOCKING, 8-32 X .375	60
	-	1	1	1	1	-	2-22603-0	SCR, HEX HD CAP 8-32 X .312	59
	-	1	1	1	1	-	458537-2	PAWL, FEED	56
	-	4	4	4	4	-	2-21002-2	SCR, BTN SKT HD CAP 8-32 X .500	54
	-	2	2	2	2	-	2-21000-7	SCR, SKT HD CAP 8-32 X .500	53
	-	1	1	1	1	-	21018-5	NUT, HEX, REG 6-32	52
	-	1	1	1	1	-	811242-2	BUMPER, HOLD DOWN	51
	-	1	1	1	1	-	690753-1	SPACER, TONKER	50
	-	-	1	-	-	..	690602-6	CAM, PRE FEED, 1 5/8	49
	-	-	-	1	-	..	690602-5	CAM, PRE FEED, 1 1/8	48
	-	1	-	-	1	-	690501-4	CAM, POST-FEED 1 5/8	47
	-	1	1	1	1	-	459456-1	APPL. BASIC SUB ASSY (SIDE WISE MOCA)	46
	-	1	1	1	1	-	690191-1	PLUG, NYLON	45
	-	1	1	1	1	-	455673-1	RAM, SIDE FEED	44
	-	1	1	1	1	-	7-21002-9	SCR, BTN SKT HD CAP 5/16-24 X 1.00	41
	-	1	1	1	1	-	690125-1	SHIM SUB-ASSY	39
	-	1	1	1	1	-	1-469367-0	SHIM	38
	-	1	1	1	1	-	879103-2	FINE ADJUST HEAD ASSEMBLY	37
	-	1	1	1	1	-	690786-3	TERMINAL SUPPORT	34
	-	2	2	2	2	-	2-21002-4	SCR, BTN SKT HD CAP 8-32 X .750	33
	-	1	1	1	1	-	21024-5	WASHER, SPRG LOCK, REG NO 10	32
	-	1	1	1	1	-	3-21000-4	SCR, SKT HD CAP 10-32 X .375	31
	-	1	1	1	1	-	1320908-8	SPACER, STRIP GUIDE	30
	-	1	1	1	1	-	1633091-1	ASSEMBLY, STRIP GUIDE	29
	-	1	1	1	1	-	1-455888-0	SPACER, CRIMPER	28
	-	1	1	1	1	-	1320928-1	PLATE, STRIP GUIDE	24
	-	1	-	-	1	-	690472-2	STRIPPER	22
	-	1	1	1	1	-	2-21000-7	SCR, SKT HD CAP 8-32 X .500	21
	-	4	4	4	4	-	21024-4	WASHER, SPRG LOCK, REG NO 8	20
	-	-	1	1	-	-	691353-1	STRIPPER	19
1	-	1	-	-	-	-	679625-1	SHEAR HOLDER, FRONT (NO CUT)	17
	-	1	1	1	1	-	3-22280-3	SPRING, COMPRESSION	12
	-	1	1	1	1	-	690461-1	STOP, SHEAR	11
1	-	-	1	1	1	-	690459-1	SHEAR HOLDER, FRONT	10
1	-	1	1	1	1	-	462006-1	FLOATING SHEAR, FRONT	9
1	1	1	1	1	1	-	1-1633110-3	ANVIL, COMBINATION .090	8
	-	1	1	1	1	-	2-455889-0	DEPRESSOR, SHEAR	5
	-	1	1	1	1	-	1-238011-0	BLOCK, CRIMPER SPACER	4
1	1	1	1	1	1	-	4-456134-4	CRIMPER, INSULATION F PREMIUM	3
	-	1	1	1	1	-	455888-1	SPACER, CRIMPER	2
1	1	1	1	1	1	-	2-456406-3	CRIMPER, WIRE PREMIUM	1

POST-FEED   5/8 STROKE	PRE-FEED   1/8 STROKE	PRE-FEED   5/8 STROKE

THIS DRAWING IS THE PROPERTY OF TYPHO ELECTRONICS. IT IS TO BE USED FOR THE EXCLUSIVE USE OF THE CUSTOMER. IT IS NOT TO BE REPRODUCED OR COPIED IN ANY MANNER WITHOUT THE WRITTEN PERMISSION OF TYPHO ELECTRONICS.				NO	
DIMENSIONS IN:		TOLERANCES UNLESS OTHERWISE SPECIFIED:		tyco Tyco Electronics Electronics Harrisburg, PA 17105-3608	
INCHES		0 F L C ±.010 1 F L C ±.015 2 F L C ±.010 3 F L C ±.001 4 F L C ±.001 5 F L C ±.001 ANGLES ±.001		NAME	
		PRODUCT SPEC		FINE ADJUST SIDE FEED HDM APPLICATOR	
MATERIAL		FINISH		SIZE CASE CODE DRAWING NO	
-		-		A1 00779 C-1855146	
CUSTOMER DRAWING				RESTRICTED TO	
CUSTOMER VIEWABLE ASSEMBLY				SCALE 3:5 SHEET 1 OF 1 REV A1	

# Mouser Electronics

Authorized Distributor

Click to View Pricing, Inventory, Delivery & Lifecycle Information:

[TE Connectivity:](#)

[1855146-3](#)