

ASSEMBLY #	LED COLOR	REV.	DRN.	DATE
561-4101-055F	RED DIFF.	B	JG	4-29-13
561-4201-055F	GREEN DIFF.	B	JG	4-29-13
561-4301-055F	YELLOW DIFF.	B	JG	4-29-13

REV	ECN NO	REVISIONS	DRN	CKD	APP	DATE
A		NEW RELEASE	JG	WFB	NO	4-29-13

RoHS Compliant 561-4X01-055F

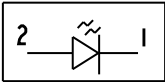
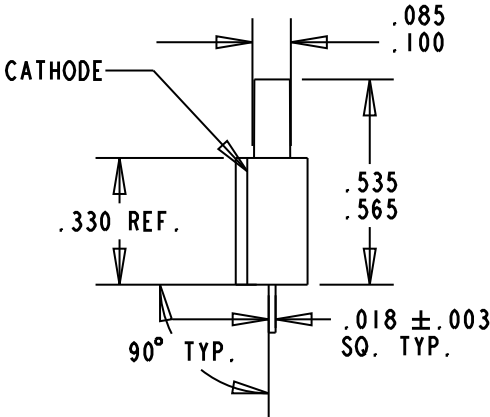
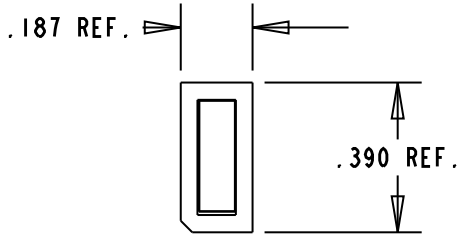
Part Numbers with the "F" suffix ending are RoHS Compliant. Example: 561-4101-055F, The bag packaging is marked with "RoHS Compliant" label or equivalent markings. Parts can be wave soldered, dip soldered, or hand soldered using typical lead-free soldering process with max 260°C temperature for 5 seconds.

ABSOLUTE MAXIMUM RATINGS AT 25°C AMBIENT	UNITS	RED	YELLOW	GREEN
POWER DISSIPATION	mW	135	85	135
CONTINUOUS FORWARD CURRENT	mA	30	20	30
DERATING LINEAR FROM 50°C	mA/°C	1.8	1.6	1.8
PEAK FORWARD CURRENT (0.5mSEC. PULSE WIDTH)	mA	90	60	90
SOLDERING TEMPERATURE (5 SEC., .063" FROM BODY)	°C	260		
OPERATING TEMPERATURE	°C	-55 TO +100		
STORAGE TEMPERATURE	°C	-55 TO +100		

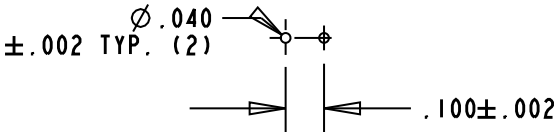
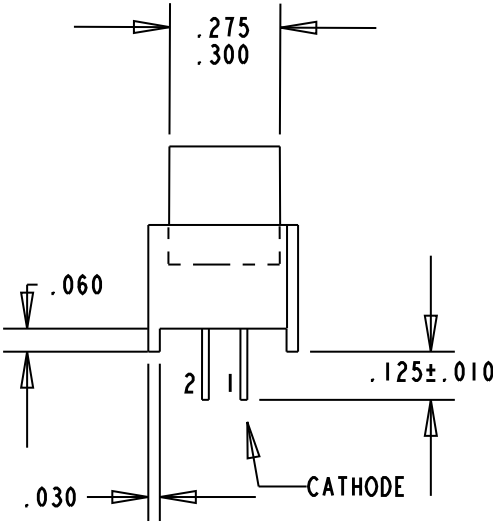
OPERATING CHARACTERISTICS AT 25°C AMBIENT													
COLOR	LUMINOUS INTENSITY @IF = 20 mA (mcd)			FORWARD VOLTAGE TEST CONDITION	FORWARD VOLTAGE (V)			REVERSE CURRENT VR = 5V	PEAK WAVELENGTH (nm)	DOMINANT WAVELENGTH (nm)			VIEWING ANGLE (DEG)
	MIN	TYP	MAX		MAX	TYP	MIN	TYP	MAX	TYP			
RED	2.5	5.0	—	IF = 20mA	1.6	1.9	2.6	100 mA	635	—	626	—	100
GREEN	1.5	2.5	—	IF = 20mA	1.6	2.3	3.0	100 mA	565	561	569	577	100
YELLOW	3.0	5.0	—	IF = 20mA	1.6	2.2	3.0	100 mA	583	582	585	593	100

NOTES:

1. THIS PRODUCT IS RoHS COMPLIANT. EACH BAG IS MARKED WITH RoHS COMPLIANT LABEL OR EQUIVALENT MARKINGS. LED MUST BE Pb FREE (RoHS COMPLIANT).
2. THIS ASSEMBLY CONTAINS ELECTROSTATIC DISCHARGE SENSITIVE DEVICES (ESDS). MAINTAIN ALL PRECAUTIONARY MEASURES DURING ASSEMBLY, HANDLING AND STORAGE IN ACCORDANCE WITH IPC-A-610.



LED SCHEMATIC



RECOMMENDED HOLE PATTERN



ATTENTION:
OBSERVE PRECAUTIONS FOR
HANDLING ELECTROSTATIC
SENSITIVE DEVICES

THIS DRAWING AND THE CONTENTS HEREIN ARE CONFIDENTIAL AND THE SOLE PROPERTY OF DIALIGHT. REPRODUCTION OF THIS DRAWING OR CONSTRUCTION OF ANY PARTS WITHIN THIS DRAWING ARE FORBIDDEN WITHOUT THE WRITTEN CONSENT OF DIALIGHT.			
SCALE: 2.000	DRAWING NUMBER		REV
ALL DIM'S IN: INCHES (MM)	C-18046		A
TOLERANCES: UNLESS OTHERWISE SPECIFIED	TITLE		
FRACTIONS: ±1/64	ASSEMBLY		
DECIMALS (.XX): ±.01	RoHS COMPLIANT		
DECIMALS (.XXX): ±.005	MATERIAL		
DECIMALS (.XXXX): ±.0005	-		
ANGLES: ±1°	FINISH:		
-	-		
FSCM	83330	SHEET 1 OF 1	
		FAMILY TABLE:	