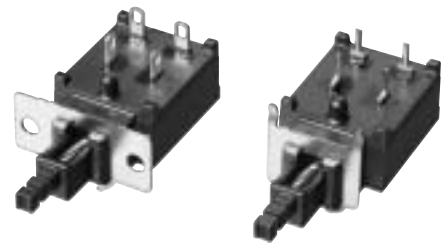


Compact Push-Type Power Switches

Malaysia

Series: **R2**
Type: **ESB92D**

Highly reliable type, applicable to practical rates of usage



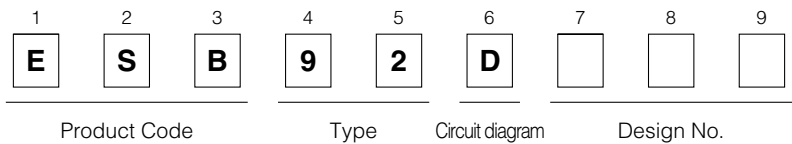
■ Features

- Available for both DPST and SPST
Available for equipment subject to inrush current (128 A)
- Special heat resistant structure
- Meets the world's major safety standards
- Rapid switching structure, applicable to IEC60065 6th edition (Refer to the notes.)
- Cadmium-free contact

■ Recommended Applications

- AV Equipment: TVs and Audio Systems

■ Explanation of Part Numbers



■ Major Specifications

| | | | |
|-------------------------------|---|-------------|-------------|
| Rating | TV-5, 5 A 250 Vac (UL, CSA) 4 A/128 A 250 Vac (European standards) | | |
| Safety Standards | UL, CSA, VDE, BEAB, SEMKO, FIMKO, SEV, DEMKO, NEMKO | | |
| Circuit Diagram | DPST | | |
| Operating Force | Circuit | Lock Travel | |
| | | 1.5 mm | 2.5 mm |
| | DPST | 8.0 N±3.0 N | 8.0 N±3.0 N |
| Travel | Lock Travel: 2.5 mm, Full Travel: 3.5 mm | | |
| | Lock Travel: 1.5 mm, Full Travel: 2.5 mm | | |
| Minimum Quantity/Packing Unit | 25 pcs. (Vinyl Bag) | | |
| Quantity/Carton | 300 pcs. | | |

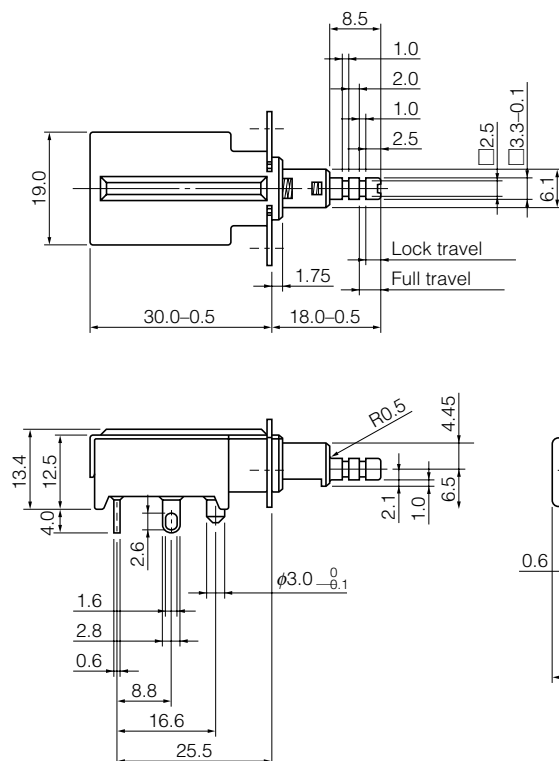
* OA equipment: Personal computers, display monitors, printers etc.

Design and specifications are each subject to change without notice. Ask factory for the current technical specifications before purchase and/or use.
Should a safety concern arise regarding this product, please be sure to contact us immediately.

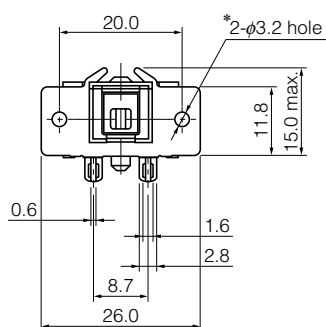
■ Dimensions in mm (not to scale)

No. 1

Solder lug type



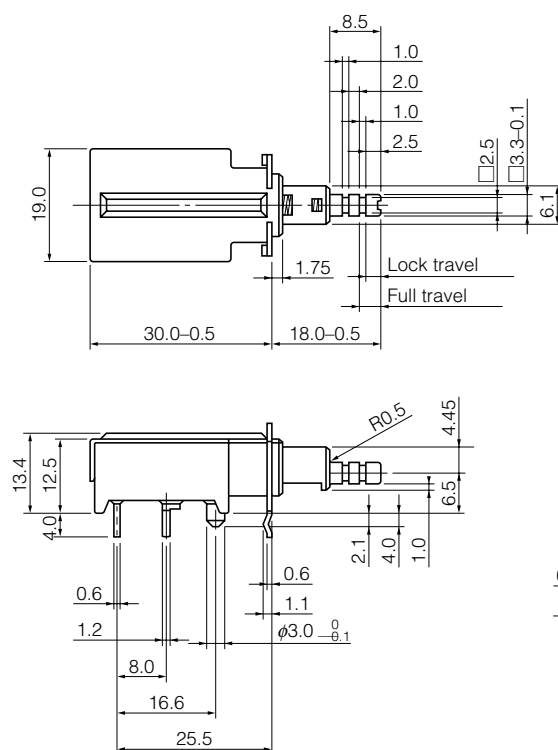
| Part No. | Travel | | Circuit Diagram |
|-----------|--------|--------|-----------------|
| | Lock | Full | |
| ESB92D27B | 2.5 mm | 3.5 mm | DPST |
| ESB92D17B | 1.5 mm | 2.5 mm | |



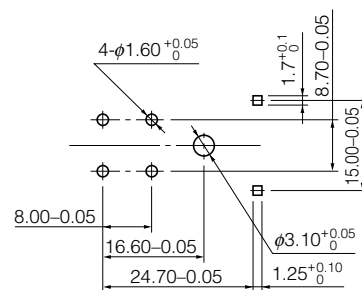
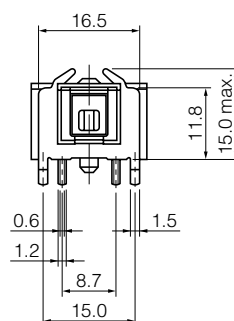
* Mounting Spec with M3 Top

No. 2

PWB mount type



| Part No. | Travel | | Circuit Diagram |
|-----------|--------|--------|-----------------|
| | Lock | Full | |
| ESB92D21B | 2.5 mm | 3.5 mm | DPST |
| ESB92D11B | 1.5 mm | 2.5 mm | |



Recommended PWB piercing plan
(t=1.60±0.05)
View from terminal side