



POKE HOME - JUNCTION BOX
(CONNECTS ALL WIRES)

00-9286-00X-121-X06

PREFIX _____

CODE	TYPE	DETAILS
00	POKE HOME	WIRE TO WIRE

SERIES _____

NO. OF WAYS _____

CODE	NO. OF WAYS	DETAILS
004	4 (ALL INTERCONNECTED)	SHEET 2
006	6 (ALL INTERCONNECTED)	SHEET 3
008	8 (ALL INTERCONNECTED)	SHEET 4

Elco Europe (A Division of AVX Ltd) CONFIDENTIAL PROPRIETY
The document on this print and information therewith are PROPRIETY
to Elco Europe (A Division of AVX Ltd) and shall not be copied
or disclosed in whole or in part without Elco Europe's written consent.

WIRE SIZE _____

CODE	WIRE GAUGE	MAX. CONDUCTOR	MAX. INSULATION
121	18 TO 26 AWG	1.05mm DIAMETER	2.10mm DIAMETER

COLOUR AND APPROVAL _____

CODE	COLOUR	AVAILABILITY
5	RED	STANDARD
9	RED	UL APPROVED - SPECIAL ORDER

PLATING OPTION _____

CODE	CONTACTS
06	TIN ALL OVER

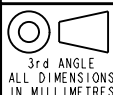


**CONTROLLED
RELEASE**

FORM-106-01-036-6 ISS 7

ELCO EUROPE (A DIVISION OF AVX LTD.) CONFIDENTIAL PROPRIETY
THE DRAWING ON THIS PRINT AND INFORMATION THEREWITH ARE
PROPRIETARY TO ELCO EUROPE (A DIVISION OF AVX LTD.) AND
SHALL NOT BE USED OR DISCLOSED IN WHOLE OR IN PART
WITHOUT ELCO EUROPE'S WRITTEN CONSENT.

Release No.
History
102717
19.04.2011
28.04.2011
06.09.2011
01.11.2011
11.11.2011
30.11.2011
08.02.2012
20.06.2012



ELCO
© COPYRIGHT ELCO EUROPE
NOT TO BE DISCLOSED OR COPIED
WITHOUT WRITTEN PERMISSION

Drawn
N.C.H.
Size
CV

Description
POKE HOME CONNECTOR - JUNCTION BOX
Part Number
00-9286-01-100S

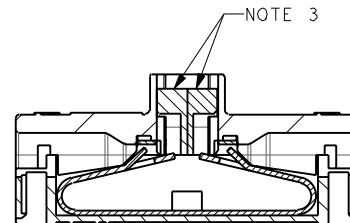
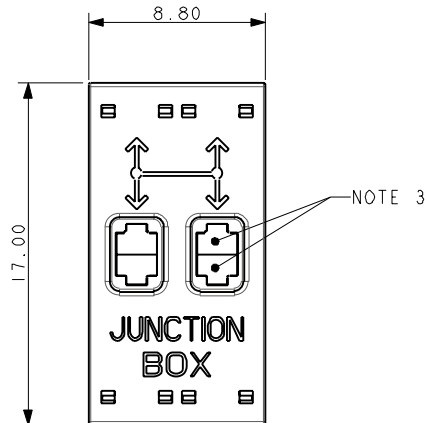
DATE
14-Feb-11
Issue
1

SHEET 1 OF 6

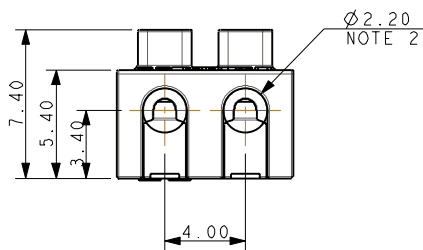
A

B

POKE HOME 4 WAY - JUNCTION BOX - 18AWG TO 26AWG

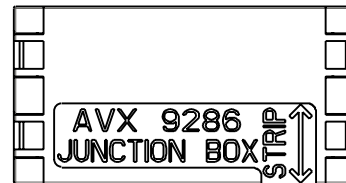


SECTION ON A-A

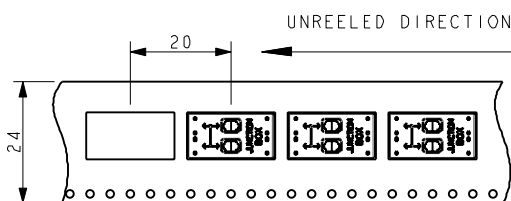


PACKING DETAILS

REEL Ø	330mm
MAX REEL WIDTH	30.4mm
LEADER	500mm
TRAILER	500mm
QTY PER REEL	400



NOTE 8

UNREELED
DIRECTION

Elco Europe (A Division of AVX Ltd) CONFIDENTIAL PROPRIETY
The document on this print and information therewith are PROPRIETY
to Elco Europe (A Division of AVX Ltd) and shall not be copied
or disclosed in whole or in part without Elco Europe's written consent.

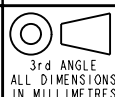
NOTES :-

1. 4 WAY WIRE TO WIRE "POKE HOME" CONNECTOR, BUTTON OPERATED, ALL TERMINALS INTERCONNECTED.
2. WIRE SIZES 18-26AWG, MAXIMUM INSULATION DIAMETER 2.10mm.
3. SPLIT BUTTON ALLOWS THE WIRES TO BE INSERTED/WITHDRAWN INDEPENDENTLY.
4. INSULATION MATERIAL :- NYLON 46, GLASS FILLED, UL94 V-0, COLOUR SEE SHEET 1.
5. CONTACT MATERIAL :- TIN PLATED COPPER ALLOY.
6. FOR FULL SPECIFICATION REFER TO ELCO SPECIFICATION 201-01-132, UL COMPONENTS REFER TO ELCO SPECIFICATION 201-01-132UL. FOR APPLICATION NOTES REFER TO ELCO SPECIFICATION 201-01-135.
7. GENERAL TOLERANCE ± 0.20 mm.
8. WIRE STRIP LENGTH GUIDE, SEE SHEET 5.
9. ADHESIVE STRIP FOR PANEL MOUNTING, REFER TO SHEET 6.
10. FOR UL PRODUCT CODES UL REFERENCE E320991.

ELCO EUROPE (A DIVISION OF AVX LTD.) CONFIDENTIAL PROPRIETY
THE DRAWING ON THIS PRINT AND INFORMATION THEREWITH ARE
PROPRIETARY TO ELCO EUROPE (A DIVISION OF AVX LTD.) AND
SHALL NOT BE USED OR DISCLOSED IN WHOLE OR IN PART
WITHOUT ELCO EUROPE'S WRITTEN CONSENT.

SHEET 2 OF 6

Release No.
History
102717
19.04.2011
28.04.2011
06.09.2011
01.11.2011
11.11.2011
30.11.2011
08.02.2012
20.06.2012



ELCO
© COPYRIGHT ELCO EUROPE
NOT TO BE DISCLOSED OR COPIED
WITHOUT WRITTEN PERMISSION

Drawn
N.C.H.
Size
CV

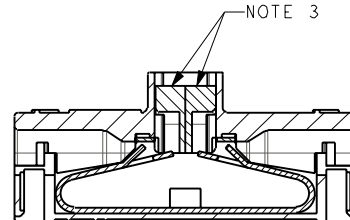
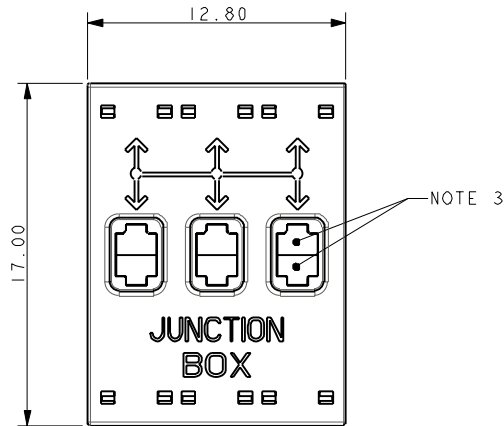
Description
POKE HOME CONNECTOR - JUNCTION BOX
Part Number
00-9286-01_100S

DATE
09-Feb-11
Issue
1

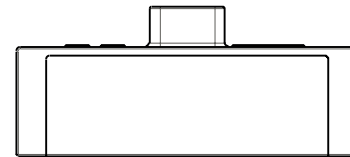
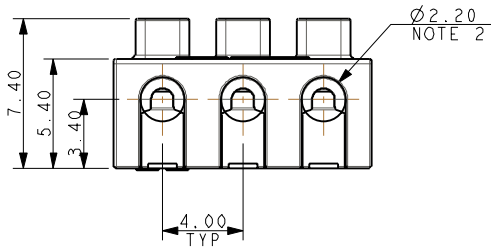
A

B

POKE HOME 6 WAY - JUNCTION BOX - 18AWG TO 26AWG

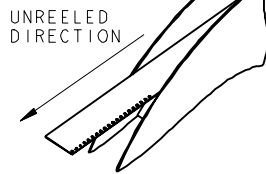
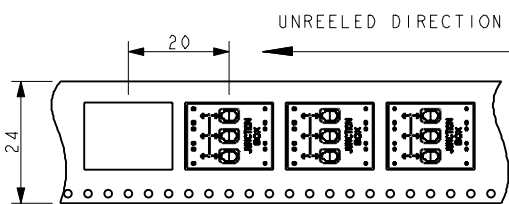
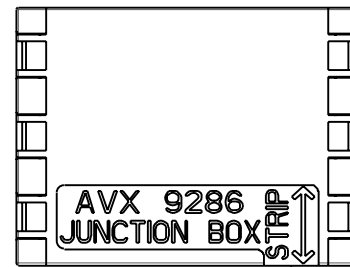


SECTION ON A-A



PACKING DETAILS

REEL Ø	330mm
MAX REEL WIDTH	30.4mm
LEADER	500mm
TRAILER	500mm
QTY PER REEL	400



Elco Europe (A Division of AVX Ltd) CONFIDENTIAL PROPRIETY
The document on this print and information therewith are PROPRIETY
to Elco Europe (A Division of AVX Ltd) and shall not be copied
or disclosed in whole or in part without Elco Europe's written consent.

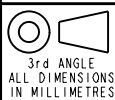
NOTES :-

- 6 WAY WIRE TO WIRE "POKE HOME" CONNECTOR, BUTTON OPERATED, ALL TERMINALS INTERCONNECTED.
- WIRE SIZES 18-26AWG, MAXIMUM INSULATION DIAMETER 2.10mm.
- SPLIT BUTTON ALLOWS THE WIRES TO BE INSERTED/WITHDRAWN INDEPENDENTLY.
- INSULATION MATERIAL :- NYLON 46, GLASS FILLED, UL94 V-0, COLOUR SEE SHEET 1.
- CONTACT MATERIAL :- TIN PLATED COPPER ALLOY.
- FOR FULL SPECIFICATION REFER TO ELCO SPECIFICATION 201-01-132, UL COMPONENTS REFER TO ELCO SPECIFICATION 201-01-132UL. FOR APPLICATION NOTES REFER TO ELCO SPECIFICATION 201-01-135.
- GENERAL TOLERANCE ± 0.20 mm.
- WIRE STRIP LENGTH GUIDE, SEE SHEET 5.
- ADHESIVE STRIP FOR PANEL MOUNTING, REFER TO SHEET 6.
- FOR UL PRODUCT CODES UL REFERENCE E320991.

FORM-106-01-056-6 ISS 7

ELCO EUROPE (A DIVISION OF AVX LTD.) CONFIDENTIAL PROPRIETY
THE DRAWING ON THIS PRINT AND INFORMATION THEREWITH ARE
PROPRIETARY TO ELCO EUROPE (A DIVISION OF AVX LTD.) AND
SHALL NOT BE USED OR DISCLOSED IN WHOLE OR IN PART
WITHOUT ELCO EUROPE'S WRITTEN CONSENT.

Release No.
History
102717
19.04.2011
28.04.2011
06.09.2011
01.11.2011
11.11.2011
30.11.2011
08.02.2012
20.06.2012



ELCO
© COPYRIGHT ELCO EUROPE
NOT TO BE DISCLOSED OR COPIED
WITHOUT WRITTEN PERMISSION

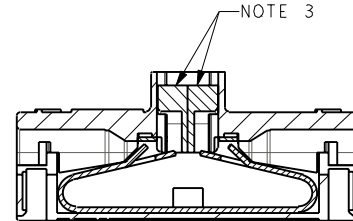
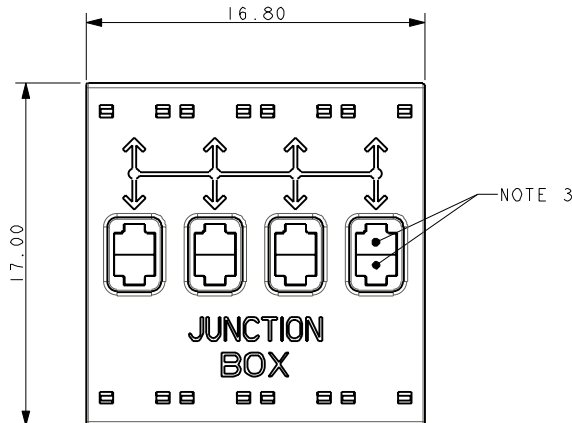
Drawn
N.C.H.
Size
CV

Description
POKE HOME CONNECTOR - JUNCTION BOX
Part Number
00-9286-01_100S

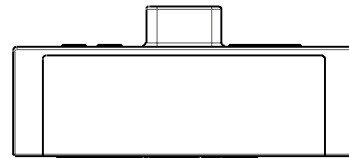
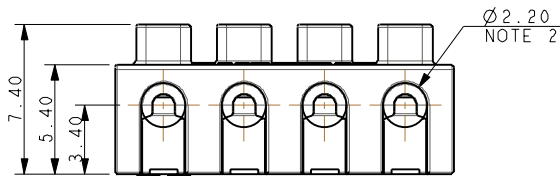
DATE
09-Feb-11
Issue
1

SHEET 3 OF 6

POKE HOME 8 WAY - JUNCTION BOX - 18AWG TO 26AWG

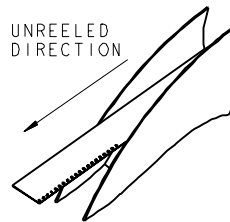
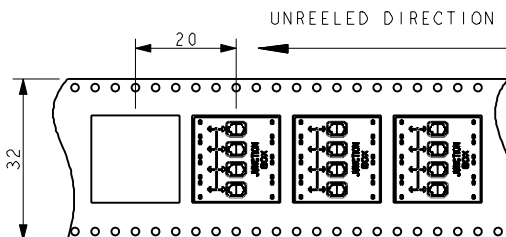
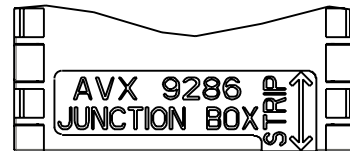


SECTION ON A-A



PACKING DETAILS

REEL Ø	330mm
MAX REEL WIDTH	38.4mm
LEADER	500mm
TRAILER	500mm
QTY PER REEL	400



Elco Europe (A Division of AVX Ltd) CONFIDENTIAL PROPRIETY
The document on this print and information therewith are PROPRIETY
to Elco Europe (A Division of AVX Ltd) and shall not be copied
or disclosed in whole or in part without Elco Europe's written consent.

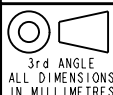
NOTES :-

- 8 WAY WIRE TO WIRE "POKE HOME" CONNECTOR, BUTTON OPERATED, ALL TERMINALS INTERCONNECTED.
- WIRE SIZES 18-26AWG, MAXIMUM INSULATION DIAMETER 2.10mm.
- SPLIT BUTTON ALLOWS THE WIRES TO BE INSERTED/WITHDRAWN INDEPENDENTLY.
- INSULATION MATERIAL :- NYLON 46, GLASS FILLED, UL94 V-0, COLOUR SEE SHEET 1.
- CONTACT MATERIAL :- TIN PLATED COPPER ALLOY.
- FOR FULL SPECIFICATION REFER TO ELCO SPECIFICATION 201-01-132, UL COMPONENTS REFER TO ELCO SPECIFICATION 201-01-132UL. FOR APPLICATION NOTES REFER TO ELCO SPECIFICATION 201-01-135.
- GENERAL TOLERANCE ± 0.20 mm.
- WIRE STRIP LENGTH GUIDE, SEE SHEET 5.
- ADHESIVE STRIP FOR PANEL MOUNTING, REFER TO SHEET 6.
- FOR UL PRODUCT CODES UL REFERENCE E320991.

ELCO EUROPE (A DIVISION OF AVX LTD.) CONFIDENTIAL PROPRIETY
THE DRAWING ON THIS PRINT AND INFORMATION THEREWITH ARE
PROPRIETARY TO ELCO EUROPE (A DIVISION OF AVX LTD.) AND
SHALL NOT BE USED OR DISCLOSED IN WHOLE OR IN PART
WITHOUT ELCO EUROPE'S WRITTEN CONSENT.

SHEET 4 OF 6

Release No.
History
102717
19.04.2011
28.04.2011
06.09.2011
01.11.2011
11.11.2011
30.11.2011
08.02.2012
20.06.2012



ELCO
© COPYRIGHT ELCO EUROPE
NOT TO BE DISCLOSED OR COPIED
WITHOUT WRITTEN PERMISSION

Drawn
N.C.H.
Size
CV

Description
POKE HOME CONNECTOR - JUNCTION BOX
Part Number
00-9286-01_100S

DATE
09-Feb-11
Issue
1

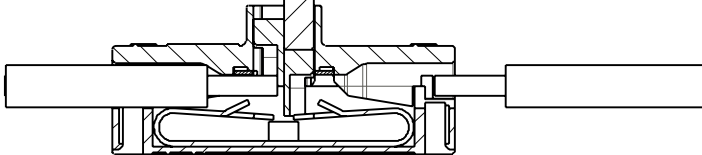
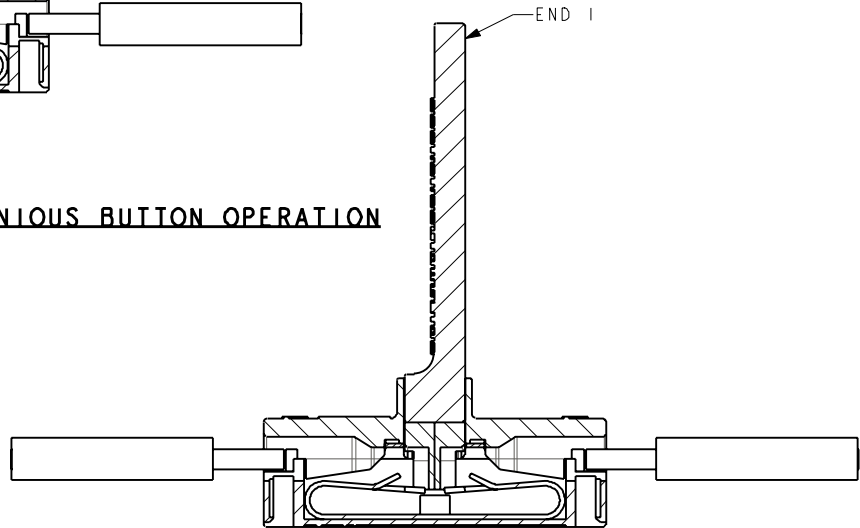
A

B

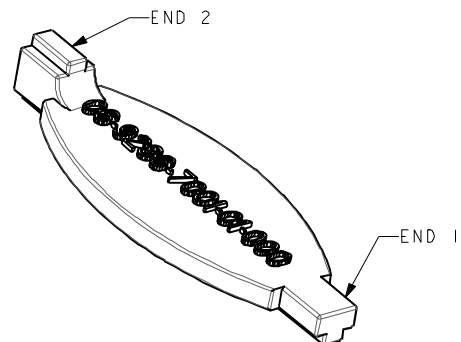
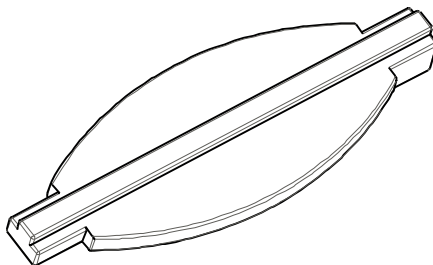
POKE HOME BUTTON ACTIVATION TOOL

END 2

Elco Europe (A Division of AVX Ltd) CONFIDENTIAL PROPRIETY
The document on this print and information therewith are PROPRIETY
to Elco Europe (A Division of AVX Ltd) and shall not be copied
or disclosed in whole or in part without Elco Europe's written consent.

SINGLE BUTTON OPERATION**SIMULTANEOUS BUTTON OPERATION**

4.00±0.50 NOTE 2

TRIMMED WIRE**9286 BUTTON ACTIVATION TOOL****06-9286-7001-01-000****NOTES :-**

1. TOOL IS DOUBLE ENDED, END 1 ACTIVATES SINGLE BUTTON, END 2 FOR SIMULTANEOUS BUTTON ACTIVATION.
2. WIRE WHEN TRIMMED TO BE STRAIGHT WITH NO BURRS.
3. FOR FULL ASSEMBLY DETAILS REFER TO APPLICATION NOTES 201-01-135.
4. SUPPLIED IN PACKS OF 100 PIECES.

SHEET 5 OF 6

FORM-106-01-036-6 ISS 7

ELCO EUROPE (A DIVISION OF AVX LTD.) CONFIDENTIAL PROPRIETY
THE DRAWING ON THIS PRINT AND INFORMATION THEREWITH ARE
PROPRIETARY TO ELCO EUROPE (A DIVISION OF AVX LTD.) AND
SHALL NOT BE USED OR DISCLOSED IN WHOLE OR IN PART
WITHOUT ELCO EUROPE'S WRITTEN CONSENT.

Release No.
History
102717
19.04.2011
28.04.2011
06.09.2011
01.11.2011
11.11.2011
30.11.2011
08.02.2012
20.06.2012

3rd ANGLE
ALL DIMENSIONS
IN MILLIMETRES

ELCO
© COPYRIGHT ELCO EUROPE
NOT TO BE DISCLOSED OR COPIED
WITHOUT WRITTEN PERMISSION

Drawn
N.C.H.
Size
CV

Description
POKE HOME CONNECTOR - JUNCTION BOX
Part Number
00-9286-01_100S

DATE
02-Mar-11
Issue
1

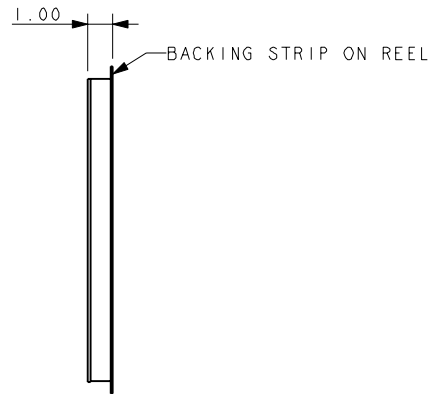
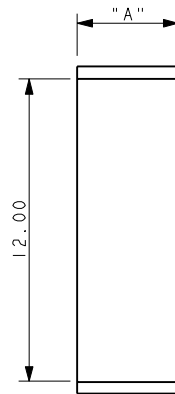
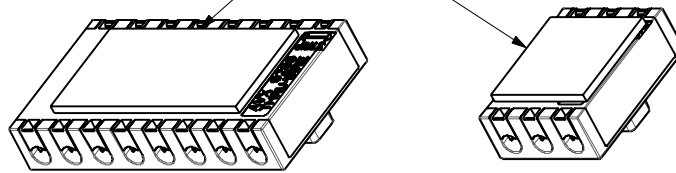
A

B

80-9286-400X-00-000 ADHESIVE MOUNTING TAPE
ACCESSORY - NOT SUPPLIED WITH CONNECTORS

Elco Europe (A Division of AVX Ltd) CONFIDENTIAL PROPRIETY
The document on this print and information therewith are PROPRIETY
to Elco Europe (A Division of AVX Ltd) and shall not be copied
or disclosed in whole or in part without Elco Europe's written consent.

TAPE APPLIED TO CENTRE OF BASE



PART NUMBER	DIMENSION "A"	MATCHING CONNECTORS	
		00-9286-00X-021-X06 THRU WIRE	00-9286-00X-121-X06 JUNCTION BOX
80-9286-4001-00-000	4.00	1 WAY	N/A
80-9286-4002-00-000	8.00	2 WAY	4 WAY
80-9286-4003-00-000	12.00	3 AND 4 WAY	6 AND 8 WAY
80-9286-4006-00-000	24.00	6 AND 8 WAY	N/A

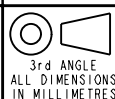
- NOTES :-
1. DOUBLE SIDED FOAM FILLED ADHESIVE TAPE.
 2. WIDTH FOR 1 WAY, 2 WAY, 3 WAY AND 6 WAY CONNECTORS, FOR LENGTH SEE TABLE.
 3. USED TO ADHERE A 9286 CONNECTOR TO A FLAT SURFACE.
 4. SOME SURFACES MAY REQUIRE THE USE OF A CLEANING SOLVENT TO ACHIEVE BEST RESULTS.
 5. SUPPLIED CUT TO SIZE ON A REEL ON AN OVERSIZE BACKING STRIP PARTS 400 PER REEL.



ELCO EUROPE (A DIVISION OF AVX LTD.) CONFIDENTIAL PROPRIETY
THE DRAWING ON THIS PRINT AND INFORMATION THEREWITH ARE
PROPRIETARY TO ELCO EUROPE (A DIVISION OF AVX LTD.) AND
SHALL NOT BE USED OR DISCLOSED IN WHOLE OR IN PART
WITHOUT ELCO EUROPE'S WRITTEN CONSENT.

SHEET 6 OF 6

Release No.
History
102717
11.11.2011
30.11.2011
08.02.2012
20.06.2012



ELCO
© COPYRIGHT ELCO EUROPE
NOT TO BE DISCLOSED OR COPIED
WITHOUT WRITTEN PERMISSION

Drawn
N.C.H.
Size
CV

Description
POKE HOME CONNECTOR - JUNCTION BOX
Part Number
00-9286-01_100S

DATE
08-Nov-11
Issue
1