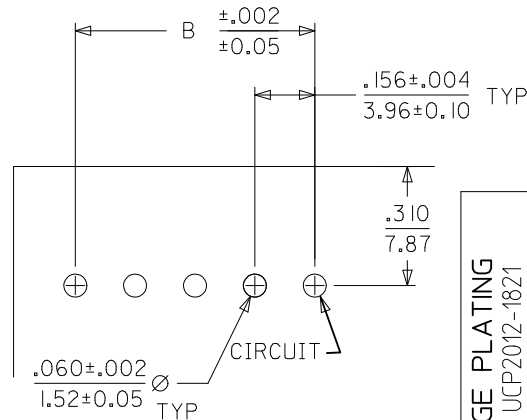


NOTES:

1. HOUSING MATERIAL: NYLON, UL 94V-2
2. FINISH:
 - (197) OVERALL REFLOWED MATTE TIN: 0.00152/.000060 MIN. OVER 0.00127/.000050 MIN. NICKEL OVERALL.
 - (208) SELECT GOLD: .000015/0.00038 MIN. SELECT TIN: .000100/0.00254 MIN. OVERALL NICKEL UNDERPLATE: .000050/0.00127 MIN.
 - (909) OVERALL HOT TIN DIP: .000100/0.00254 MIN.
3. PRODUCT SPECIFICATION: PS-08-50
4. PACKAGING INFO: SEE CHARTS.
5. SOLDERABILITY SPECIFICATION: SMES-152.
6. TOP ENTRY OPTIONS: SEE DRAWING SDA-2145-002.
7. BOTTOM ENTRY OPTIONS: SEE DRAWING SDA-2145-003
8. .183/4.64 DIMENSION IS BOTTOM OF HOUSING TO CENTER OF MATING PIN AND DOES NOT REFLECT CENTER OF THE CONNECTOR HOUSING WINDOW DIMENSION.
9. THIS PART CONFORMS TO CLASS B REQUIREMENTS OF COSMETIC SPECIFICATION.

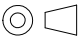


PCB LAYOUT: COMPONENT SIDE
RECOMMENDED PCB THICKNESS: .062/1.57

CHANGE PLATING		DESCRIPTION	QUALITY SYMBOLS
EC NO:	REV		
UCP2012-1821	AA	DRWN:MMSTROH 2012/01/04 CHKD:MKIPPER 2012/01/05 APPR:FSMITH 2012/02/02	$\nabla_F = 0$ $\nabla_G = 0$ $\nabla_H = 0$

GENERAL TOLERANCES (UNLESS SPECIFIED)		
	mm	INCH
4 PLACES	± ---	± ---
3 PLACES	± ---	± .010
2 PLACES	± 0.25	± .015
1 PLACE	± 0.38	± ---
ANGULAR ±1/2°		
DRAFT WHERE APPLICABLE MUST REMAIN WITHIN DIMENSIONS		

DIMENSION STYLE	
IN/MM	
DRAWN BY	DATE
SAMIEC	
CHECKED BY	DATE
SAMIEC	98/10/09
APPROVED BY	DATE
MARGULIS	
MATERIAL NO.	
SEE CHART	
SIZE	
A	

SCALE	DESIGN UNITS INCH	 THIRD ANGLE PROJECTION
TITLE KK 156 PCB ASSY RIGHT ANGLE ENTRY		
MOLEX INCORPORATED		
DOCUMENT NO. SDA-2145-001		SHEET NO. 1 OF *
THIS INFORMATION THAT IS PROPRIETARY TO MOLEX SHOULD NOT BE USED WITHOUT WRITTEN PERMISSION		

CKT	A	B
02	.308 7.82	.156±.005 3.96±0.13
03	.464 11.79	.312±.005 7.92±0.13
04	.620 15.75	.468±.005 11.89±0.13
05	.776 19.71	.624±.005 15.85±0.13
06	.932 23.67	.780±.005 19.81±0.13
07	1.088 27.64	.936±.010 23.77±0.25
08	1.244 31.60	1.092±.010 27.74±0.25
09	1.400 35.56	1.248±.010 31.70±0.25
10	1.556 39.52	1.404±.010 35.66±0.25
11	1.712 43.48	1.560±.010 39.62±0.25
12	1.868 47.45	1.716±.010 43.59±0.25
13	2.024 51.41	1.872±.010 47.55±0.25
14	2.180 55.37	2.028±.014 51.51±0.36
15	2.336 59.33	2.184±.014 55.47±0.36



KK 156 PCB ASSY

2145 RIGHT ANGLE SERIES

OPTIONS

RAMPS	YES
HOOKS:	YES
COLOR:	WHITE
MOLD VOID:	NONE
TERM MATL:	PHOS BRONZE
CONTACT:	STANDARD
PC TAIL (C):	.145 / 3.68
PLATING:	197 - TIN
TERM VOID:	NONE
PACKAGING:	TRAY PK-2145-001

RAMPS	YES
HOOKS:	YES
COLOR:	WHITE
MOLD VOID:	NONE
TERM MATL:	PHOS BRONZE
CONTACT:	STANDARD
PC TAIL (C):	.145 / 3.68
PLATING:	208 - GOLD
TERM VOID:	NONE
PACKAGING:	TRAY PK-2145-001

Ckts

Material No
09-52-1026
09-52-1036
09-52-1046
09-52-1056
09-52-1066
09-52-1076
09-52-1086
09-52-1096
09-52-1106
09-52-1116
09-52-1126
09-52-1136
09-52-1146
09-52-1156

Material No
09-62-4027
09-62-4037
09-62-4047
09-62-4057
09-62-4067
09-62-4077
09-62-4087
09-62-4097
09-62-4107
09-62-4117
09-62-4127
09-62-4137
09-62-4147
09-62-4157

REV:

AA

2/2/2012

MMSTROH

TITLE:

**KK 156 PCB ASSY
2145 RIGHT ANGLE SERIES**

SHEET No.

- 2 -

DOCUMENT NUMBER:

SDA-2145-001

CREATED / REVISED BY:

MMSTROH

CHECKED BY:

MKIPPER

APPROVED BY:

FSMITH



KK 156 PCB ASSY

2145 RIGHT ANGLE SERIES

OPTIONS	RAMPS	YES					RAMPS	YES
	HOOKS:	YES					HOOKS:	YES
	COLOR:	WHITE					COLOR:	WHITE
	MOLD VOID:	NONE					MOLD VOID:	NONE
	TERM MATL:	BRASS					TERM MATL:	BRASS
	CONTACT:	STANDARD					CONTACT:	STANDARD
	PC TAIL (C):	.145 / 3.68					PC TAIL (C):	.145 / 3.68
	PLT CODE:	197 - TIN					PLT CODE:	P909 - TIN
	TERM VOID:	NONE					TERM VOID:	NONE
	PACKAGING:	TRAY PK-2145-001					PACKAGING:	TRAY PK-2145-001
Ckt	Material No						Material No	
2	09-52-1021						09-52-3021	
3	09-52-1031						09-52-3031	
4	09-52-1041						09-52-3041	
5	09-52-1051						09-52-3051	
6	09-52-1061						09-52-3061	
7	09-52-1071						09-52-3071	
8	09-52-1081						09-52-3081	
9	09-52-1091						09-52-3091	
10	09-52-1101						09-52-3101	
11	09-52-1111						09-52-3111	
12	09-52-1121						09-52-3121	
13	09-52-1131						09-52-3131	
14	09-52-1141						09-52-3141	
15	09-52-1151						09-52-3151	

REV:		TITLE:	KK 156 PCB ASSY 2145 RIGHT ANGLE SERIES		SHEET No.
AA	2/2/2012 MMSTROH				- 3 -
DOCUMENT NUMBER:		CREATED / REVISED BY:	CHECKED BY:	APPROVED BY:	
SDA-2145-001		MMSTROH	MKIPPER	FSMITH	



KK 156 PCB ASSY

2145 RIGHT ANGLE SERIES

OPTIONS	RAMPS	YES	RAMPS	YES	RAMPS	NO	RAMPS	YES
	HOOKS:	YES	HOOKS:	YES	HOOKS:	YES	HOOKS:	YES
	COLOR:	BLACK	COLOR:	WHITE	COLOR:	WHITE	COLOR:	WHITE
	MOLD VOID:	NONE	MOLD VOID:	NONE	MOLD VOID:	NONE	MOLD VOID:	NONE
	TERM MATL:	BRASS	TERM MATL:	BRASS	TERM MATL:	BRASS	TERM MATL:	BRASS
	CONTACT:	STANDARD	CONTACT:	STANDARD	CONTACT:	STANDARD	CONTACT:	LOW INSERTION
	PC TAIL (C):	.145 / 3.68	PC TAIL (C):	.145 / 3.68	PC TAIL (C):	.145 / 3.68	PC TAIL (C):	.145 / 3.68
	PLT CODE:	P909 – TIN	PLT CODE:	208 – 15 GOLD	PLT CODE:	P909 – TIN	PLT CODE:	P909 – TIN
	TERM VOID:	NONE	TERM VOID:	NONE	TERM VOID:	NONE	TERM VOID:	NONE
	PACKAGING:	TRAY PK-2145-001	PACKAGING:	TRAY PK-2145-001	PACKAGING:	TRAY PK-2145-001	PACKAGING:	TRAY PK-2145-001
Ckt	Material No		Material No		Material No		Material No	
2	09-53-3021		09-62-3021					
3	09-53-3031		09-62-3031				09-52-3035	
4	09-53-3041		09-62-3041				09-52-3045	
5	09-53-3051		09-62-3051				09-52-3055	
6	09-53-3061		09-62-3061				09-52-3065	
7	09-53-3071		09-62-3071					
8	09-53-3081		09-62-3081				09-52-3085	
9	09-53-3091		09-62-3091		09-52-2097		09-52-3095	
10	09-53-3101		09-62-3101				09-52-3105	
11	09-53-3111		09-62-3111					
12	09-53-3121		09-62-3121				09-52-3125	
13	09-53-3131		09-62-3131					
14	09-53-3141		09-62-3141					
15	09-53-3151		09-62-3151				09-52-3155	

REV:	2/2/2012	TITLE: KK 156 PCB ASSY 2145 RIGHT ANGLE SERIES				SHEET No.
AA	MMSTROH					- 4 -
DOCUMENT NUMBER:		CREATED / REVISED BY:		CHECKED BY:	APPROVED BY:	
SDA-2145-001		MMSTROH		MKIPPER	FSMITH	



KK 156 PCB ASSY

2145 RIGHT ANGLE SERIES

			RAMPS	YES	RAMPS	YES	RAMPS	
			HOOKS:	YES	HOOKS:	YES	HOOKS:	
			COLOR:	WHITE	COLOR:	WHITE	COLOR:	
			MOLD VOID:	NONE	MOLD VOID:	NONE	MOLD VOID:	
			TERM MATL:	PHOS BRONZE	TERM MATL:	PHOS BRONZE	TERM MATL:	
			CONTACT:	STANDARD	CONTACT:	LOW FORCE	CONTACT:	
			PC TAIL (C):	.145 / 3.68	PC TAIL (C):	.145 / 3.68	PC TAIL (C):	
			PLT CODE:	P909 – TIN	PLT CODE:	197 – TIN	PLT CODE:	
			TERM VOID:	NONE	TERM VOID:	NONE	TERM VOID:	
			PACKAGING:	TRAY PK-2145-001	PACKAGING:	TRAY PK-2145-001	PACKAGING:	
				Material No		Material No		Material No
				09-52-3028		50-29-0036		
				09-52-3038		50-29-0037 09-52-1030		
				09-52-3048		50-29-0038		
				09-52-3058		50-29-0039		
				09-52-3068		09-52-1060		
				09-52-3078		50-29-0040		
				09-52-3088		09-52-1080		
				09-52-3098		50-29-0041		
				09-52-3108		09-52-1100		
				09-52-3118		50-29-0042		
				09-52-3128		09-52-1120		
				09-52-3138		50-29-0043		
				09-52-3148		09-52-1140		
				09-52-3158		50-29-0044		

REV:	2/2/2012	TITLE:	KK 156 PCB ASSY	SHEET No.
AA	MMSTROH		2145 RIGHT ANGLE SERIES	- 5 -
DOCUMENT NUMBER:	CREATED / REVISED BY:	CHECKED BY:	APPROVED BY:	
SDA-2145-001	MMSTROH	MKIPPER	FSMITH	

Mouser Electronics

Authorized Distributor

Click to View Pricing, Inventory, Delivery & Lifecycle Information:

Molex:

09-62-4107