

**Features**

- Low Loss
- Narrow Bandwidth
- Excellent Return Loss

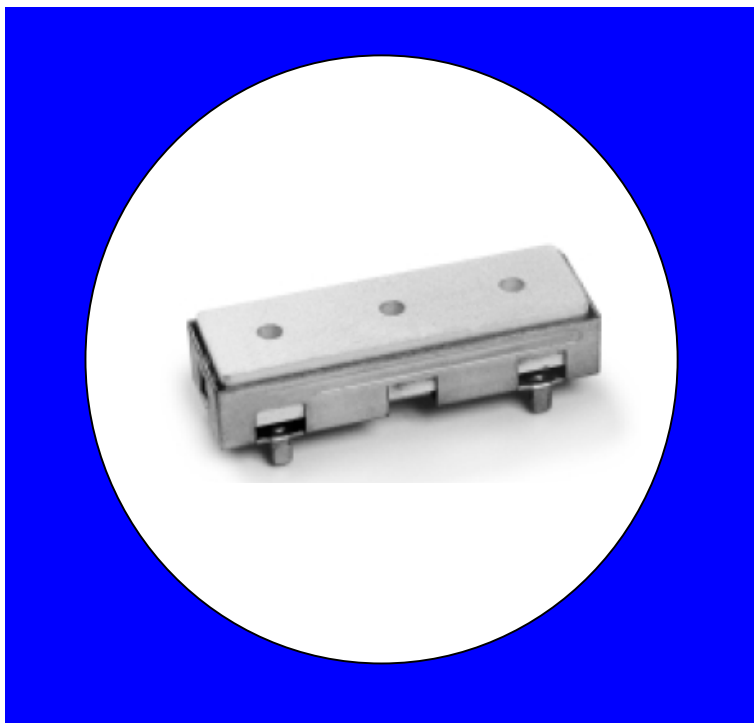
**Description**

Pin mounted, silver (Ag) coated ceramic filter. Developed for use in TCAS applications.

Weight: 20.1 grams typical

Material: Filter is composed of a ceramic block plated with Ag and a bracket made of 60-40 tin lead plated cold roll steel.

Filter complies with RoHS standards.

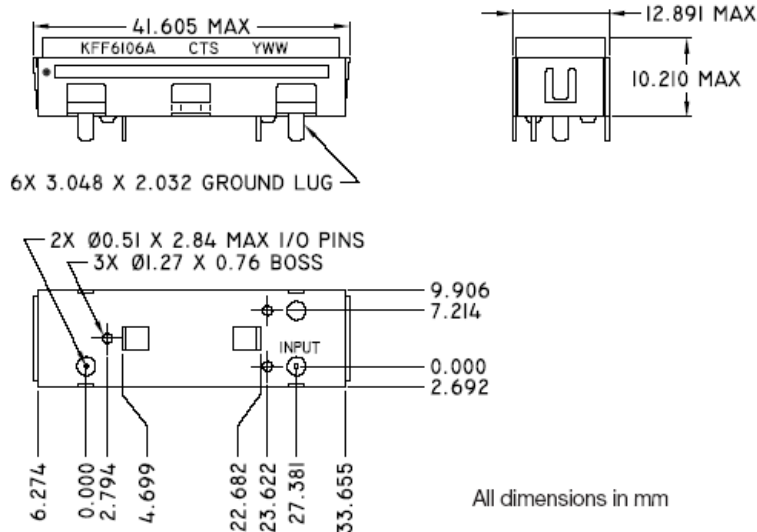
**Electrical Specifications**

Parameter	Frequency (MHz)	Typical @ 25°C	Spec. @ 25°C
Passband Insertion Loss	1087-1093	0.7 dB	1.0 dB max
Passband Return Loss	1087-1093	18.0 dB	12.5 dB min
Attenuation	970	44.0 dB	40.0 dB min

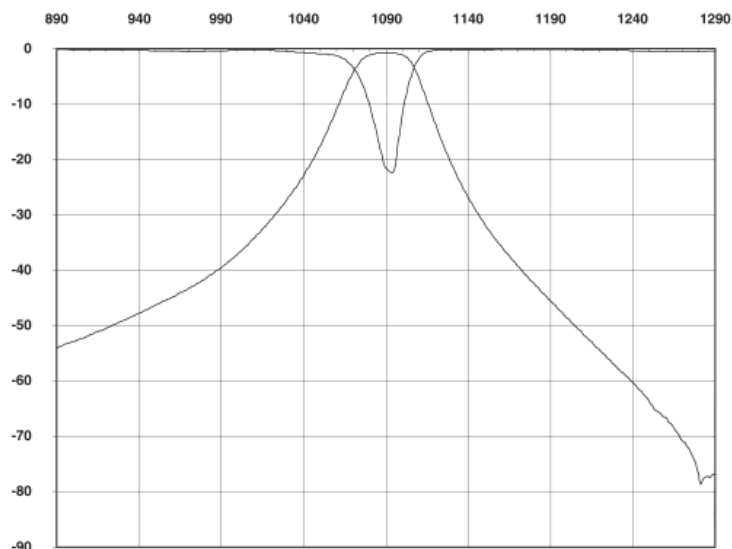
Note: Supplier shall test each filter to the critical electrical specifications of the above table. Any subsequent audits may deviate from in value due to measurement repeatability among different test systems. Such deviations shall not exceed the following limits:

Specification Allowance	
Insertion Loss	0.1 dB
Return Loss	1.0 dB
Stopbands	1.0 dB

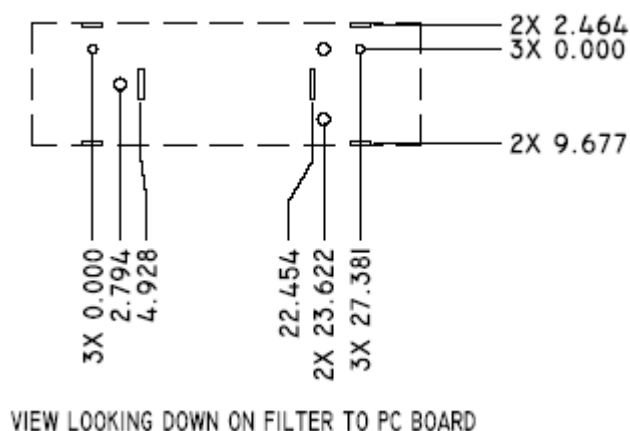
## Mechanical Drawing



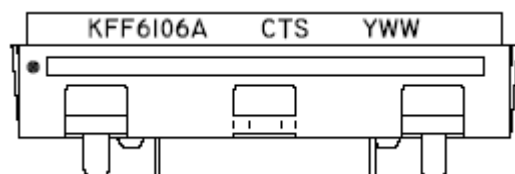
## Electrical response



## PCB Layout



## Packaging and Marking



This product is shipped in pre-formed foam trays.



5 10 Slot foam Trays  
(100 max. per box)