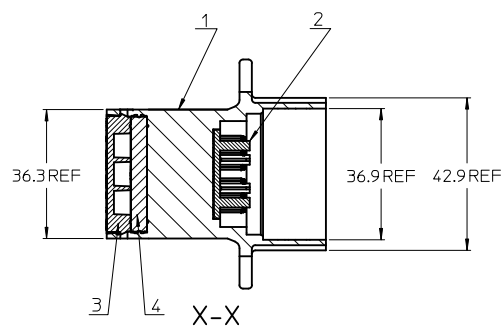
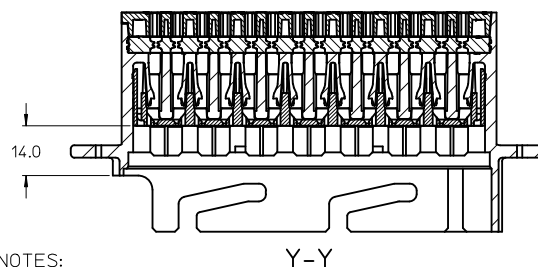


4	MALE BACK SEAL	1	TRANSPARENT
3	MALE REAR COVER	1	BLACK
2	MALE FRONT COVER	1	GREEN
1	MALE HOUSING	1	BLACK
No.	DESCRIPTION	QTY	COLOUR
BILL OF MATERIAL			

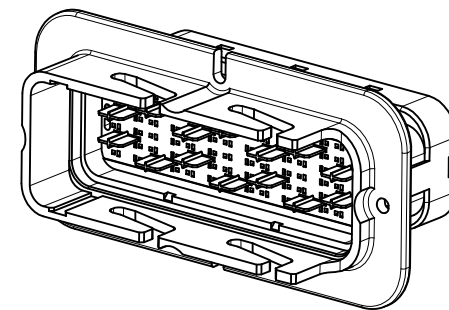


TPA IN CLOSED (AS SHIPPED) POSITION

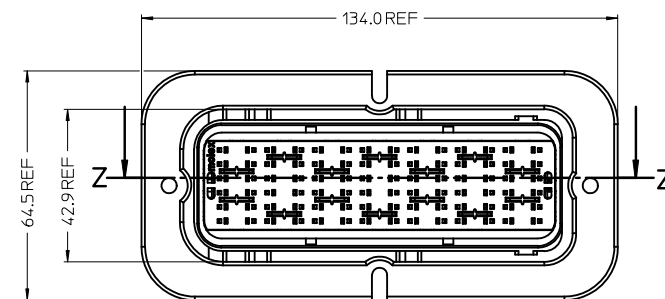
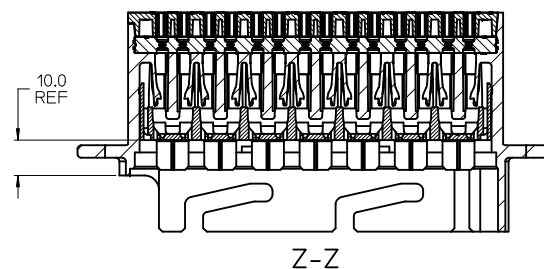



NOTES:

1. MATERIALS:
HOUSINGS: SPS/NYLON BLEND, GLASS FILLED, UL 94 HB
SEAL: LIQUID SILICONE RUBBER
2. MX150 BLADE TERMINAL PER SD-33000-001 TO BE USED WITH THIS ASSEMBLY CRIMPED WITH CABLE INSULATION OUTER DIAMETER IN THE RANGE 1.5mm TO 2.69mm
3. PRODUCT SPECIFICATION: PS-85070-001
4. PACKAGING SPECIFICATION: PK-85071-001
5. MATES WITH: SRC2 RECEPTACLE HOUSING ASSEMBLY PER SD-93287-001
6. APPLICATION SPECIFICATION: AS-85070-001
7. FLANGE GASKET OPTIONS: REFER TO SD-85071-016



TPA IN PRELOAD POSITION



ADD NOTE 7 & REF DIMS				QUALITY SYMBOLS		GENERAL TOLERANCES (UNLESS SPECIFIED)		DIMENSION STYLE		SCALE	DESIGN UNITS	THIRD ANGLE PROJECTION	
EC NO: WEU2012-0136				2012/02/06		mm		MM ONLY		1:1	METRIC		
DRW:JUSHEA				2012/02/10		INCH		DRAWN BY		TITLE			
CHKD:JWALLACE				2012/02/11		4 PLACES ±---		JOCONNOR		SRC2 MALE 84 PIN			
APPR:EFOLAN				2012/02/22		3 PLACES ±---		CHECKED BY		BLADE HOUSING ASSEMBLY			
						2 PLACES ±0.20		JDWALLACE					
						1 PLACE ±0.5		2010/08/26					
						ANGULAR ±---°		APPROVED BY					
								DATE					
								EFOLAN		MOLEX MOLEX INCORPORATED			
								MATERIAL NO.		DOCUMENT NO.			
								932880001		SD-93288-001			
								SIZE		SHEET NO.			
								A2		1 OF 1			
								THIS DRAWING CONTAINS INFORMATION THAT IS PROPRIETARY TO MOLEX INCORPORATED AND SHOULD NOT BE USED WITHOUT WRITTEN PERMISSION					