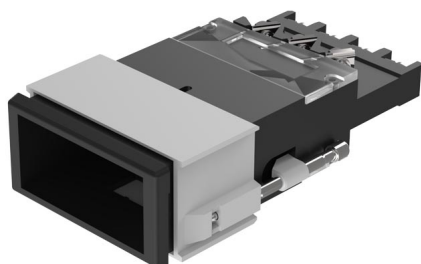


# EAO – Your Expert Partner for Human Machine Interfaces

## 03-623.011 - Pushbutton actuator double-headed

### 03-623.011 - Pushbutton actuator double-headed



*Attention: The preview is based on a sample product. This can differ from your current configuration.*

#### Mounting

Mounting cut-out 21,2 mm x 41,2 mm  
Design flush

#### Front

Front dimension 24 mm x 48 mm  
Front bezel colour black  
Front bezel material Plastic  
Front shape rectangular

#### Other Attributes

Weight 0,065 kg

#### Operating-/Indication part

Lens illumination non-illuminative

#### IP-Rating

Front protection IP40

#### Connection Method

Terminal Screw terminal

#### Actuator

Switching action  
Housing colour black  
Housing material Plastic

#### Switching element

Switching system Snap-action switching element  
Contacts 2 C  
Switching voltage 400 V AC  
Switching current 10 A  
Contact material Silver

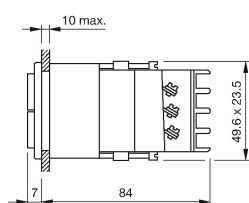
#### Function

Pushbutton

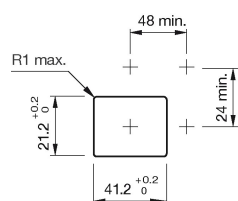
# EAO – Your Expert Partner for Human Machine Interfaces

## 03-623.011 - Pushbutton actuator double-headed

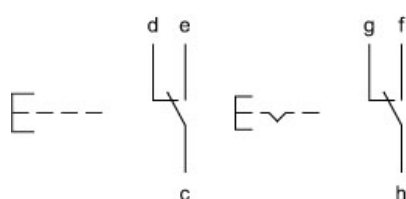
### Dimensions



### Mounting cut-outs



### Wiring diagram



### Additional information

Has independent changeover

### Legend

Contacts: C = Changeover

Switching action: B = Momentary, C = Maintained