

CN Series Double Pole Power Rocker Switches

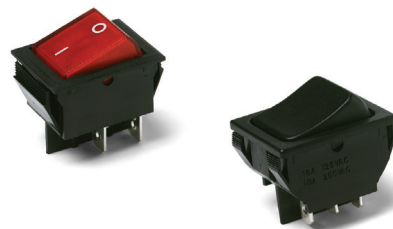
Features/Benefits

- ***Illuminated versions available***
- ***Multiple actuator and termination styles***
- ***Robust design***
- ***Custom version upon request***
- ***RoHS compliant***



Typical Applications

- ***Appliances***
- ***Office equipment***
- ***Computers and peripherals***
- ***Off-road vehicles***
- ***Industrial machines***
- ***HVAC units***
- ***Transportation***



Specifications

CONTACT RATING:

See table for Q and QA ratings on the last page of this series.

ELECTRICAL LIFE: 10,000 make and break cycles at full load.

INSULATION RESISTANCE: $10^8 \Omega \text{ min.}$

DIELECTRIC STRENGTH: 1,500 VRMS @ sea level.

OPERATING TEMPERATURE: -20°C to +85°C

HOUSING AND ACTUATOR: 6/6 nylon (UL94V-2), black, matte finish.

ILLUMINATED ACTUATOR: Polycarbonate, matte finish.

CENTER CONTACTS: Silver plated, copper alloy.

END CONTACTS: Silver plated AgSuO₂InO₃.

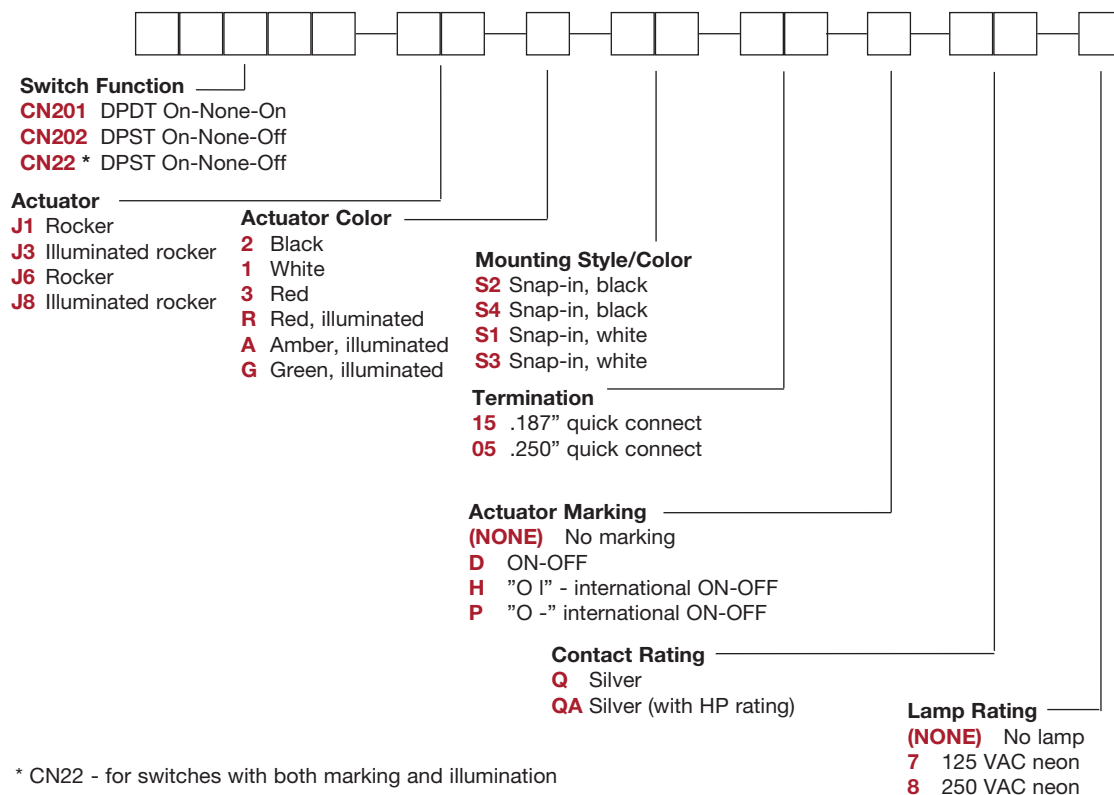
ALL TERMINALS: Silver plated, copper alloy.

Note: Specifications and materials listed above are for switches with standard options. For information on specific and custom switches, consult Customer Service Center.

Materials

Build-A-Switch

To order, simply select desired option from each category and place in the appropriate box. Available options are shown and described on pages G-99 through G-101. For additional options not shown in catalog, consult Customer Service Center.



Rocker

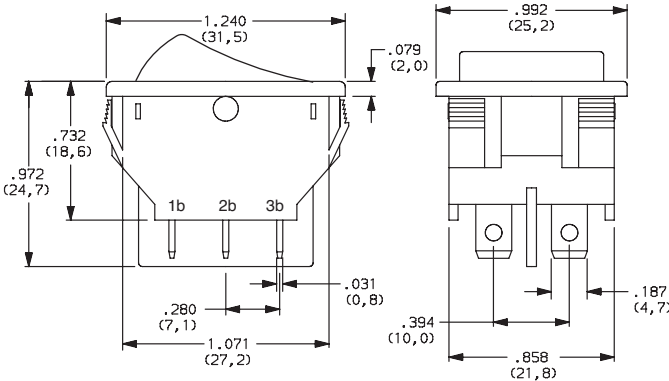


CN Series Double Pole Power Rocker Switches

SWITCH FUNCTION

NO. POLES	MODEL NO.	SWITCH FUNCTION			CONNECTED TERMINALS			SCHEMATIC
		Pos. 1	Pos. 2	Pos. 3	Pos. 1	Pos. 2	Pos. 3	
		C&K marking on opposite side			C&K marking on opposite side			
DP	CN201	ON	NONE	ON	2-1 4-5	N/A	2-3 6-5	
	CN202	ON	NONE	OFF			OPEN	
	CN22 *	ON	NONE	OFF				 For Illuminated Version

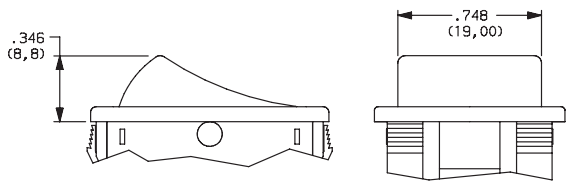
* CN22 - for switches with both marking and illumination



Shown in Pos. 1

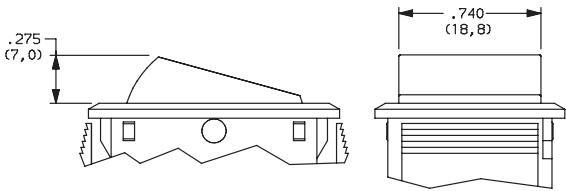
ACTUATOR

- J1 ROCKER
- J3 ILLUMINATED ROCKER



NOTE: J1 & J3 actuators available with Q contact rating only.
J3 actuator available with CN202 & CN22 switch function only.

- J6 ROCKER
- J8 ILLUMINATED ROCKER



NOTE: J6 & J8 actuators available with QA contact rating only.
J6 actuator available with CN201 & CN202 switch functions,
J8 actuator available with CN202 & CN22 switch function only.

Rocker



G



Dimensions are shown: Inches (mm)
Specifications and dimensions subject to change

CN Series Double Pole Power Rocker Switches

ACTUATOR COLOR

OPTION CODE	ACTUATOR COLOR
2	BLACK
1	WHITE
3	RED
R	RED, ILLUMINATED
A	AMBER, ILLUMINATED
G	GREEN, ILLUMINATED

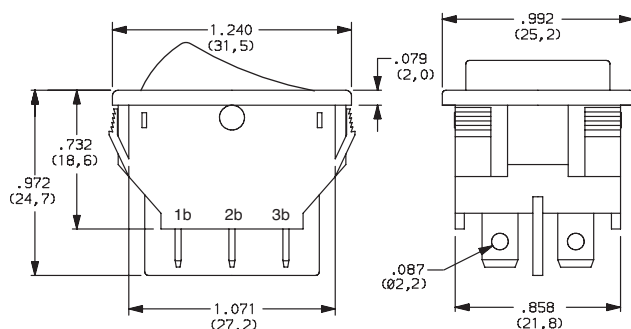
MOUNTING STYLE/COLOR

S2 SNAP-IN, BLACK

S1 SNAP-IN, WHITE

S4 SNAP-IN, BLACK

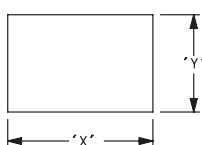
S3 SNAP-IN, WHITE



NOTE: Available with 15 termination and Q contact rating only.

Shown in Pos. 1

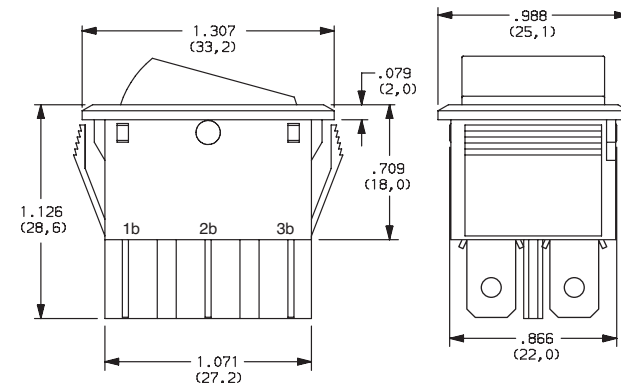
PANEL MOUNTING



PANEL THICKNESS	"X"	"Y"
0.030-0.049 (0,75-1,25)	1.190-.004 (30,2-0,1)	0.874+.004 (22,2+0,1)
0.049-0.079 (1,25-2,0)	1.197-.004 (30,4-0,1)	0.874+.004 (22,2+0,1)
0.079-0.118 (2,0-3,0)	1.213-.004 (30,8-0,1)	0.874+.004 (22,2+0,1)

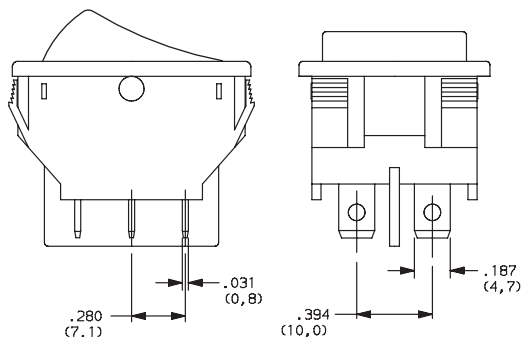
NOTE: Available with 05 termination and QA contact rating only.

Shown in Pos. 1



TERMINATION

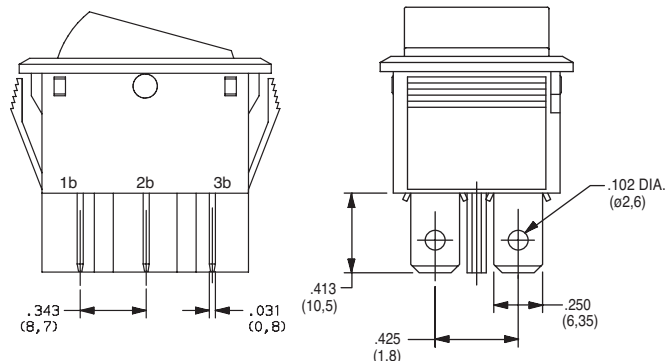
15 .187" QUICK CONNECT



NOTE: Available with S1 & S2 mounting style and Q contact rating only.

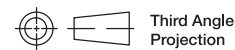
Shown in Pos. 1

05 .250" QUICK CONNECT



NOTE: Available with S3 & S4 mounting styles and QA contact rating, CN201 & CN202 switch functions only.

Shown in Pos. 1



Third Angle Projection

Dimensions are shown: Inches (mm)
Specifications and dimensions subject to change

C&K

CN Series

Double Pole Power Rocker Switches

ACTUATOR MARKING

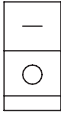
NONE NO MARKING



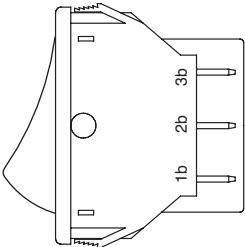
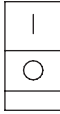
D ON-OFF



H O I



P O -



NOTE: Orientation of actuator marking and terminals.
Shown in Pos. 1

CONTACT MATERIAL

OPTION CODE	CONTACT AND TERMINAL MATERIAL	RATINGS	
Q	SILVER	POWER	16A @ 125C 1/3 HP @ 125 V AC 10A @ 250 V AC 1/2HP @ 250 V AC
QA			16A @ 125 VAC, 1/8 HP @ 125 V AC; 10 A @ 250 VAC, 1/3 HP @ 250 V AC

* Note: See Technical Data section of this catalog for RoHS compliant and compatible definitions and specifications.



LAMP RATING

(NONE) NO LAMP

7 125 VAC 33kΩ NEON

8 250 VAC 150kΩ NEON

NOTE: Lamp rating for J3 & J8 actuator options.

Third Angle Projection

Dimensions are shown: Inches (mm)
Specifications and dimensions subject to change



Mouser Electronics

Authorized Distributor

Click to View Pricing, Inventory, Delivery & Lifecycle Information:

C&K Switches:

[CN201J12S205QA](#) [CN202J12S205QA](#) [CN202J12S205PQA](#) [CN201J12S215PQ](#) [CN22J3GS215DQ7](#)
[CN22J3RS215DQ7](#) [CN201J62S405HQA](#)