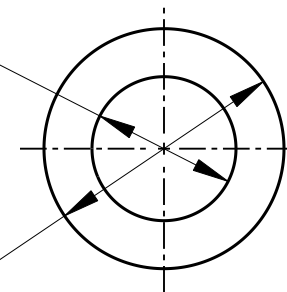


3/8"DIA



5/8"DIA

NOTES:

MATERIAL: PAPER BASE PHENOLIC XXXP.

FINISH: VARNISHED PER MIL-T-152A AND MIL-V-173B.

CUSTOMER DRAWING

CAD/CAM DWG. NO.

S1028\_CD

SHEET 1 OF 1

★ STAR SYMBOL DENOTES CRITICAL DIMENSION,  
SEE S/C ENGINEERING STANDARD ES-0001

THIS DRAWING DESCRIBES A DESIGN CONSIDERED PROPRIETARY IN NATURE, DEVELOPED AND MANUFACTURED  
BY SWITCHCRAFT INC. AND IS RELEASED ON A CONFIDENTIAL BASIS FOR IDENTIFICATION PURPOSE ONLY.

UNLESS OTHERWISE SPECIFIED

SIZE	WIDTH	MULT	LBS./M	TEMPER
------	-------	------	--------	--------

1. ALL DIMENSIONS IN INCHES  
TWO PLACE DECIMAL  $\pm .01$   
THREE PLACE DECIMAL  $\pm .005$   
FRACTIONAL DIMENSIONS  $\pm 1/64$   
ANGLES  $\pm 1/2^\circ$   
ALL DIA'S CONCENTRIC WITHIN .005 T.I.R.
2. REMOVE ALL BURRS
3. MAKE NO DIMENSIONAL ALLOWANCES FOR  
APPLIED FINISHES, I.E., PLATING,  
PAINTING, ETC.
4. HOLES ON THE SAME CENTERLINE MUST BE  
ALIGNED WITHIN  $\pm .002$

FINISH SEE NOTES

MATERIAL SEE NOTES

SPEC. NO.

SPEC. NO.

FIRST USED ON

SCALE  
1 = 0.5**Switchcraft®**

DATE DRAWN

BY

CHK'D

APP'D

5-6-92

KJB

RB  
5-14-92GJ  
5-19-92

NAME

ROUND WASHER

PART NO.

S1028

ISSUE

B

REVISIONS

DO NOT SCALE DRAWING

Pro/Engineer CAD File



ROUTING



# Mouser Electronics

Authorized Distributor

Click to View Pricing, Inventory, Delivery & Lifecycle Information:

[Switchcraft:](#)

[S1028](#)