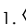


DO NOT
SCALE FROM
THIS PRINT

NOTES:

1.  REPRESENTS A CRITICAL DIMENSION.
2. BURR ALLOWANCE: .0015[.038] MAX.
3. LATCH RETENTION FORCE: 1.000LB[4.45N].
4. POSITION 2 THRU 6 TO BE IN BULK PACKING, ALL OTHER SIZES TO BE IN TUBES.

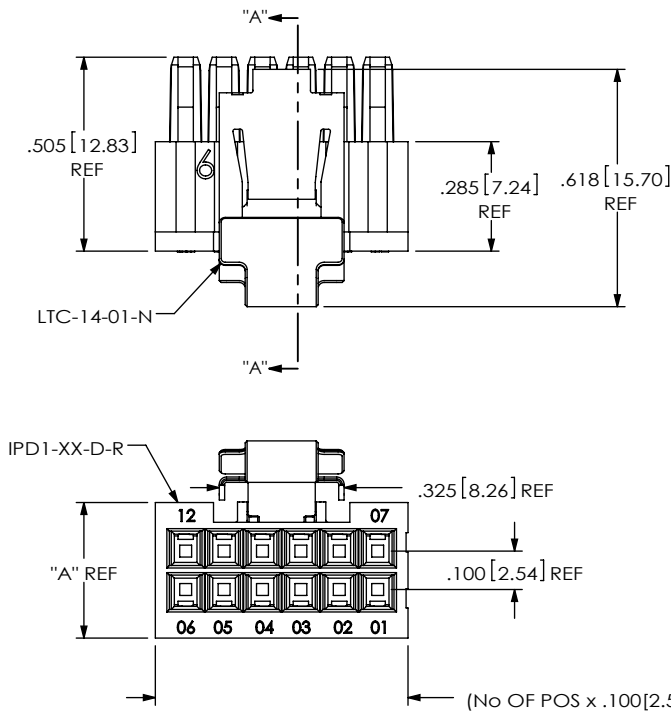


TABLE 1				
ROW SPECS	"A"	"B"	"C"	"D"
-S	.300 [7.62]	.210 [5.33]	.213 [5.41]	.403 [10.24]
-D	.353 [8.97]	.260 [6.60]	.267 [6.77]	.451 [11.46]

FIG 1
(IPD1-06-D-M SHOWN)

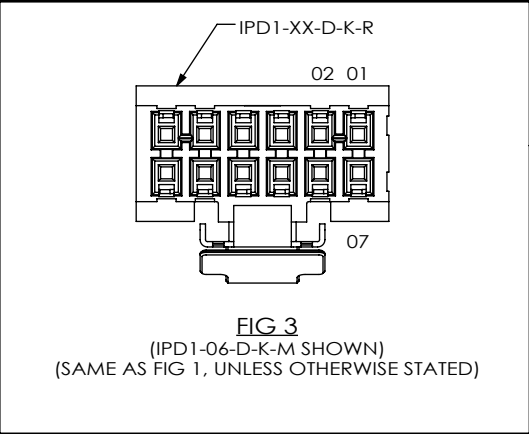
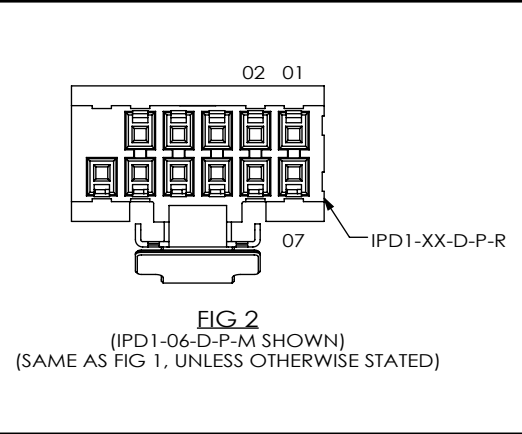
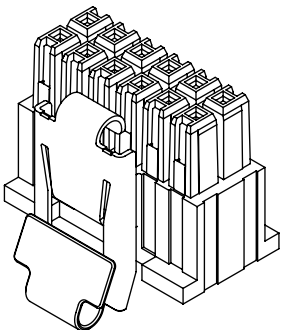
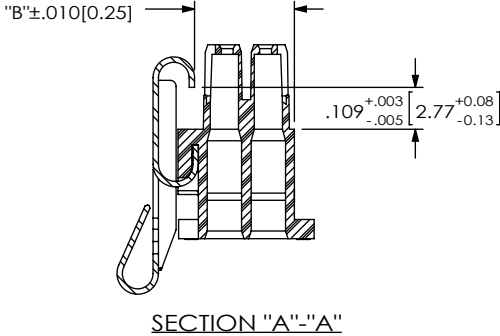
IPD1-XX-X-XX-X

No OF POSITIONS
-02 THRU -25 (PER ROW)

ROW SPECIFICATION
-S: SINGLE
-D: DOUBLE

LATCH OPTION
-M: METAL LATCH (SEE FIG 1)
(LEAVE BLANK FOR PLASTIC LATCH,
SEE FIG 8 & FIG 10, SHT 2)

OPTION
** -P: POLARIZED (SEE FIG 2)
(NOT AVAILABLE WITH -K, -GP OPTIONS)
(LEAVE BLANK FOR NO POLARIZATION)
-K: KEYED POLARIZATION (SEE FIG 3)
(NOT AVAILABLE WITH -P, -GP OPTIONS)
** -GP: GUIDE POSTS (SEE FIG 5, SHT 2)
(NOT AVAILABLE WITH -P, -K OPTIONS)
*, ** -H: HORIZONTAL (SEE FIG 7, SHT 2)
(* = NOT RELEASED FOR PRODUCTION)
(** = -P, -GP & -H OPTION AVAILABLE ON -D ONLY)



<p>UNLESS OTHERWISE SPECIFIED, DIMENSIONS ARE IN INCHES. TOLERANCES ARE:</p> <p>DECIMALS ANGLES</p> <p>.XX: ±.01 [.3] 2°</p> <p>.XXX: ±.005 [.13]</p> <p>.XXXX: ±.0020 [.051]</p>	<p>PROPRIETARY NOTE</p> <p>THIS DOCUMENT CONTAINS INFORMATION CONFIDENTIAL AND PROPRIETARY TO SAMTEC, INC. AND SHALL NOT BE REPRODUCED OR TRANSFERRED TO OTHER DOCUMENTS OR DISCLOSED TO OTHERS OR USED FOR ANY PURPOSE OTHER THAN THAT WHICH IT WAS OBTAINED WITHOUT THE EXPRESSED WRITTEN CONSENT OF SAMTEC, INC.</p>	<p>samtec</p> <p>520 PARK EAST BLVD, NEW ALBANY, IN 47150 PHONE: 812-944-6733 FAX: 812-948-5047 e-Mail: info@SAMTEC.com code 55322</p>
<p>MATERIAL: DO NOT SCALE DRAWING SHEET SCALE: 2:1</p> <p>INSULATOR: NYLON</p> <p>LATCH: NICKEL-PLATED BeCu, #25, 1/2 HT</p>	<p>DESCRIPTION: .100[2.54] DISCRETE WIRE INSULATOR & LATCH ASM</p> <p>DWG. NO. IPD1-XX-X-XX-X</p>	<p>BY: T NEWTON 03/12/2008 SHEET 1 OF 3</p>

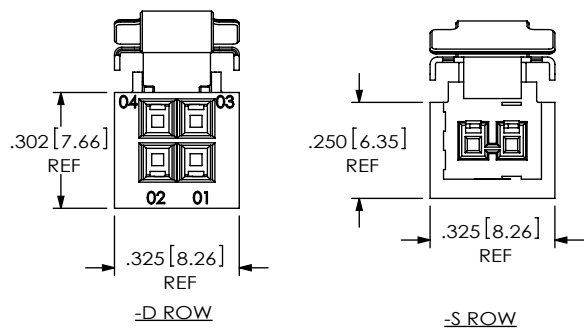


FIG 4
(IPD1-02-X-M SHOWN)
(SAME AS FIG 1, UNLESS OTHERWISE STATED)

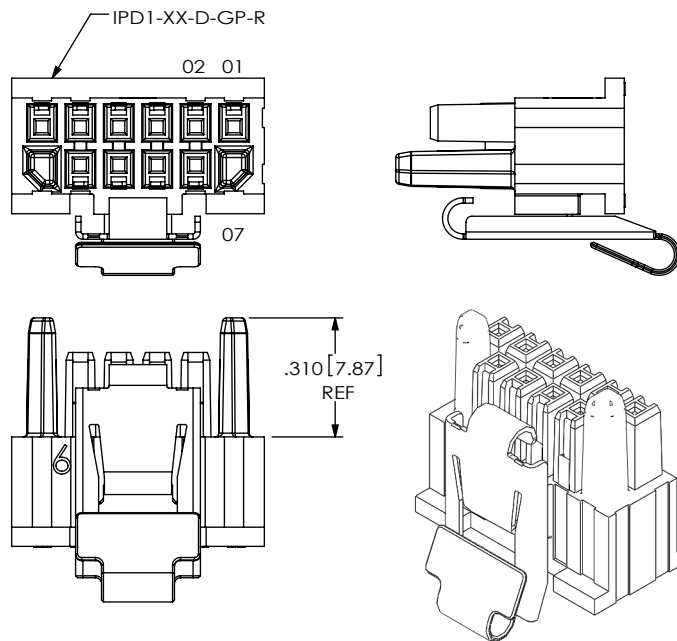


FIG 5
(IPD1-06-D-GP-M SHOWN)
(SAME AS FIG 1, UNLESS OTHERWISE STATED)

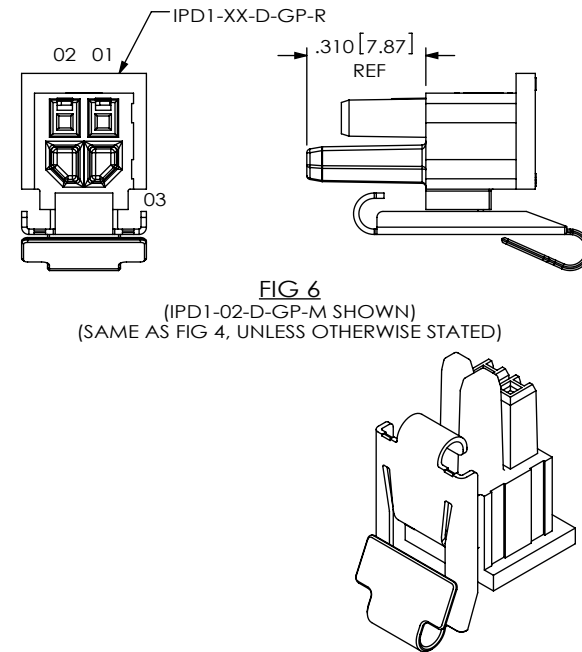


FIG 6
(IPD1-02-D-GP-M SHOWN)
(SAME AS FIG 4, UNLESS OTHERWISE STATED)

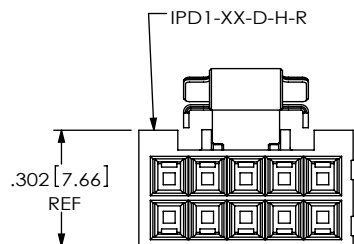


FIG 7
(IPD1-05-D-H-M SHOWN)
(SAME AS FIG 1, UNLESS OTHERWISE STATED)

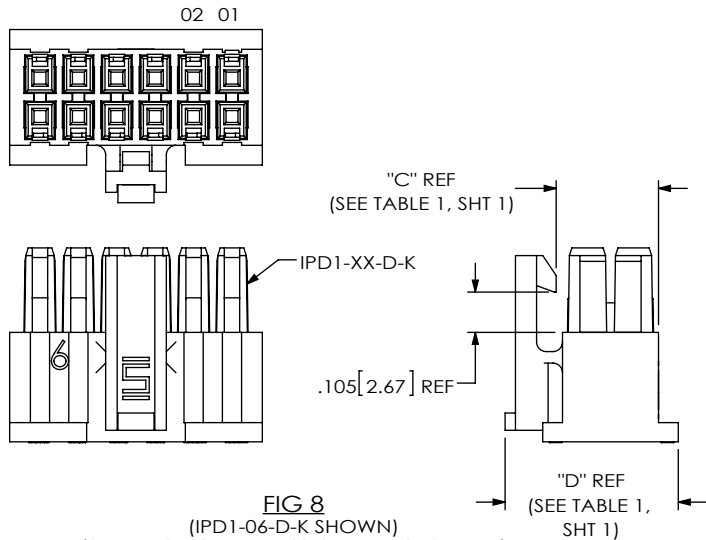


FIG 8
(IPD1-06-D-K SHOWN)
(SAME AS FIG 1, UNLESS OTHERWISE STATED)

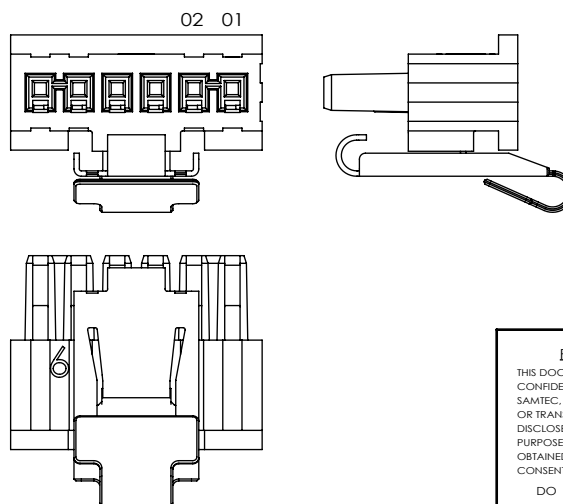


FIG 9
(IPD1-06-S-K-M SHOWN)
(SAME AS FIG 1, UNLESS OTHERWISE STATED)

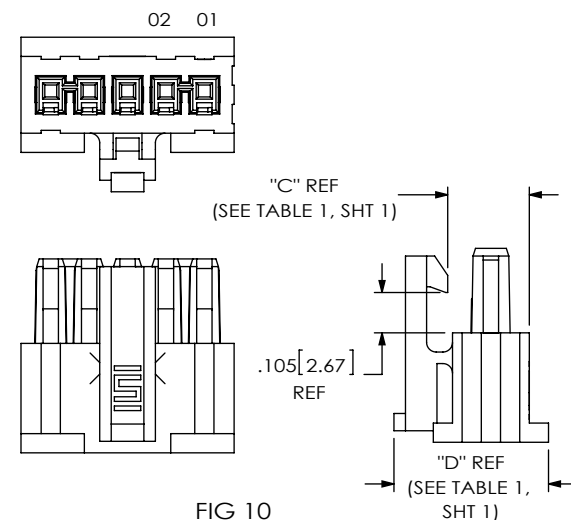


FIG 10
(IPD1-05-S-K SHOWN)
(SAME AS FIG 1, UNLESS OTHERWISE STATED)

PROPRIETARY NOTE

THIS DOCUMENT CONTAINS INFORMATION
CONFIDENTIAL AND PROPRIETARY TO
SAMTEC, INC. AND SHALL NOT BE REPRODUCED
OR TRANSFERRED TO OTHER DOCUMENTS OR
DISCLOSED TO OTHERS OR USED FOR ANY
PURPOSE OTHER THAN THAT WHICH IT WAS
OBTAINED WITHOUT THE EXPRESSED WRITTEN
CONSENT OF SAMTEC, INC.

DO NOT SCALE DRAWING

SHEET SCALE: 2:1

samtec

520 PARK EAST BLVD, NEW ALBANY, IN 47150
PHONE: 812-944-6733 FAX: 812-948-5047
e-Mail: info@SAMTEC.com code 55322

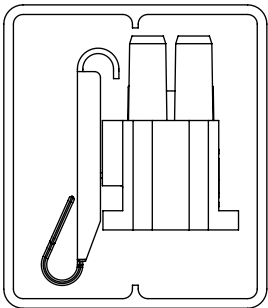
DESCRIPTION:
.100[2.54] DISCRETE WIRE INSULATOR & LATCH ASM

DWG. NO.

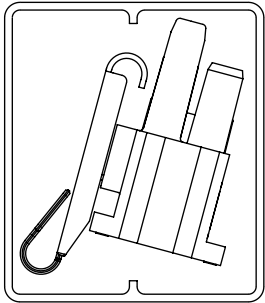
IPD1-XX-X-XX-X

BY: T NEWTON 03/12/2008

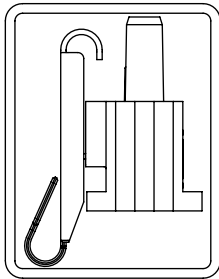
SHEET 2 OF 3



-D ROW
TUBE: PT-1-24-04-56
PLUG: TP-25



-D-GP
TUBE: PT-1-24-04-56
PLUG: TP-25



-S ROW
TUBE: PT-1-24-02-112
PLUG: TP-28

PACKAGING VIEW
(SEE NOTE 4)

PROPRIETARY NOTE

THIS DOCUMENT CONTAINS INFORMATION
CONFIDENTIAL AND PROPRIETARY TO
SAMTEC, INC. AND SHALL NOT BE REPRODUCED
OR TRANSFERRED TO OTHER DOCUMENTS OR
DISCLOSED TO OTHERS OR USED FOR ANY
PURPOSE OTHER THAN THAT WHICH IT WAS
OBTAINED WITHOUT THE EXPRESSED WRITTEN
CONSENT OF SAMTEC, INC.

DO NOT SCALE DRAWING

SHEET SCALE: 2.5:1



520 PARK EAST BLVD, NEW ALBANY, IN 47150
PHONE: 812-944-6733 FAX: 812-948-5047
e-Mail: info@SAMTEC.com code 55322

DESCRIPTION:
.100[2.54] DISCRETE WIRE INSULATOR & LATCH ASM

DWG. NO.
IPD1-XX-X-XX-X

BY: T NEWTON 03/12/2008 SHEET 3 OF 3