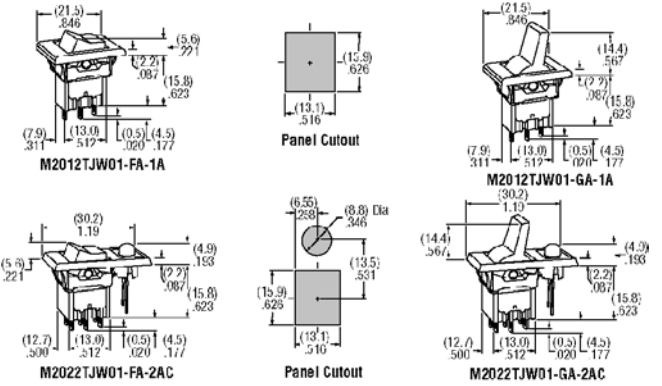


Rocker, Paddle and Slide Switches

Subminiature Rocker and Paddle Switches

NEW



M Series Features: Snap-in with solder lug, UL recognized and CSA certified, stainless steel housing and bezel with black rocker or paddle. Electrical Capacity: 6 A resistive load @ 125 V AC. Dielectric Strength: 1,500 V AC min. between contacts and case. Electrical Life: 25,000 operations min. Angle of Throw: 25°. Ambient Temperature: -15°C through +85°C. Terminal Holes: 0.043" x 0.079". Mounting Hole Center: 0.937". Panel Thickness: 0.125".

Snap-In Mount with Rocker

Stock No.	Mfr.'s Type	Pole Throw	Circuit	EACH		
				1-24	25-99	100-499
870-5506	M2012TJW01-FA-1A	SPDT	On-none-on	4.77	4.37	4.03
870-5507	M2013TJW01-FA-1A	SPDT	On-off-on	5.32	4.88	4.50
870-5508	M2022TJW01-FA-1A	DPDT	On-none-on	6.38	5.85	5.40
870-5509	M2023TJW01-FA-1A	DPDT	On-off-on	7.18	6.58	6.07
870-5510	M2012TJW01-FA-2AC	SPDT	On-none-on	6.28	5.34	4.93
870-5511	M2013TJW01-FA-2AC	SPDT	On-off-on	6.38	5.85	5.40
870-5512	M2022TJW01-FA-2AC	DPDT	On-none-on	7.46	6.83	6.31
870-5513	M2023TJW01-FA-2AC	DPDT	On-off-on	8.23	7.55	6.97

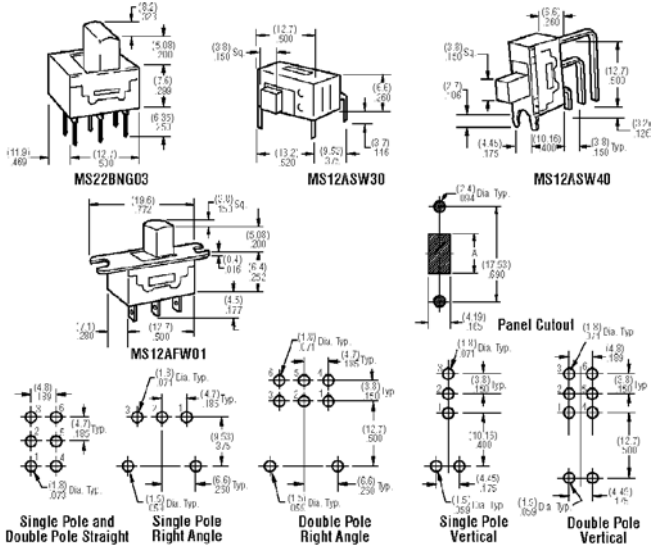
Snap-In Mount with Paddle

870-5514	M2012TJW01-GA-1A	SPDT	On-none-on	4.77	4.37	4.03
870-5515	M2013TJW01-GA-1A	SPDT	On-off-on	5.32	4.88	4.50
870-5516	M2022TJW01-GA-1A	DPDT	On-none-on	6.38	5.85	5.40
870-5517	M2023TJW01-GA-1A	DPDT	On-off-on	7.18	6.58	6.07
870-5518	M2012TJW01-GA-2AC	SPDT	On-none-on	5.82	5.34	4.93
870-5519	M2013TJW01-GA-2AC	SPDT	On-off-on	6.38	5.85	5.40
870-5520	M2022TJW01-GA-2AC	DPDT	On-none-on	7.46	6.83	6.31
870-5522	M2023TJW01-GA-2AC	DPDT	On-off-on	8.23	7.55	6.97

LED Electrical Specifications

LED Color	Forward Peak Current	Continuous Forward Current	Reverse Peak Voltage	Current Reduction Rate Above 25°	Forward Peak Voltage
Red	25 mA	20 mA	4 V	0.33	2.8

Subminiature Slide Switches

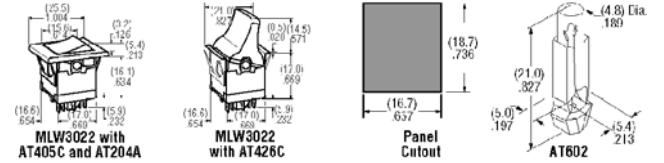


MS Series Features: Power and logic level, actuator of polyamide, housing of stainless steel, non-shorting contacts, UL recognized and CSA certified. Electrical Capacity: Silver code "W" — 6 A @ 125 V AC; Gold code "G" — 0.4 A @ 28 V AC/DC. Contact Resistance: Silver — 10 milliohms max.; Gold — 20 milliohms max. Electrical Life: Silver — 25,000 operations min.; Gold — 50,000 operations min. Total Travel: On-none-on — 0.067"; On-off-on — 0.138". Ambient Temperature: -10°C through +70°C. Panel Mount SP and DP. Mounting Hole Center: 0.690". Maximum Effective Panel Thickness: 0.197".

Prices Subject To Change — We Always Ship At The Lowest Price In Effect



Lighted Snap-In Paddle and Rocker Switches



MLW Series Features: .902" behind panel, front panel relampable, isolated lamp circuit, UL recognition, and epoxy sealed terminals. Electrical Capacity: 5 A resistive load @ 125 V AC. Dielectric Strength: 1,500 V AC minimum. Electrical Life: 10,000 operations minimum. Operating Force: 1014 grams for rockers and 460 grams for paddles. Angle of Throw: 26°. Ambient Temperature: -10°C through +50°C.

Basic Switch with Solder Lug Terminals

Order caps and bezel separately. Matching indicator available. Terminal Holes: .043" x .079". Panel Thickness: .039" through .157" without bezel and .039" through .118" with bezel.

Stock No.	Mfr.'s Type	Pole Throw	Circuit () = momentary	EACH		
				1-24	25-99	100-499
870-0801	MLW3012	SPDT	on-none-on	8.36	7.67	7.08
870-0802	MLW3013	SPDT	on-off-on	8.77	8.04	7.42
870-0803	MLW3015	SPDT	on-none-(on)	9.29	8.52	7.86
870-0804	MLW3018	SPDT	(on)-off-(on)	9.74	8.93	8.24
870-0805	MLW3019	SPDT	on-off-(on)	9.74	8.93	8.24
870-0806	MLW3022	DPDT	on-none-on	9.29	8.52	7.86
870-0807	MLW3023	DPDT	on-off-on	9.79	8.98	8.29
870-0808	MLW3025	DPDT	on-none-(on)	10.00	9.16	8.46
870-0809	MLW3028	DPDT	(on)-off-(on)	10.40	9.54	8.80
870-0810	MLW3029	DPDT	on-off-(on)	10.40	9.54	8.80

Caps, Bezel and Lamps

Stock No.	Mfr.'s Type	Description	EACH		
			1-24	25-49	50-99
870-0811	AT405B	White rocker cap	1.02	.94	.86
870-0812	AT405C	Red rocker cap	1.02	.94	.86
870-0816	AT405E	Yellow rocker cap	1.02	.94	.86
870-0813	AT405F	Green rocker cap	1.02	.94	.86
870-0815	AT405G	Blue rocker cap	1.02	.94	.86
870-0817	AT426B	White paddle cap	1.02	.94	.86
870-0818	AT426C	Red paddle cap	1.02	.94	.86
870-0822	AT426E	Yellow paddle cap	1.02	.94	.86
870-0819	AT426F	Green paddle cap	1.02	.94	.86
870-8724	AT204A	Black bezel	.72	.66	.61
870-0839	AT204B	White bezel	.72	.66	.61
870-0842	AT204H	Gray bezel	.72	.66	.61
870-0843	AT602-6V	6 V incandescent lamp	1.74	1.60	1.48
870-0844	AT602-12V	12 V incandescent lamp	1.74	1.60	1.48
870-0847	AT602-26V	26 V incandescent lamp	1.74	1.60	1.48
870-8725	AT602N	110 V neon lamp	3.06	2.81	2.59

AT602 Lamp Specifications — Determined at Basic Temperature of 25°C

Voltage	6 V	12 V	26 V	110 V Neon	Recommended Resistor
Current	80 mA	50 mA	22 mA	1.5 mA	for Neon: 33 KΩ for 110 V
Endurance	2000 hrs.	2000 hrs.	2000 hrs.	2000 hrs.	and 100 KΩ for 220 V AC

Straight PC Terminals

Stock No.	Mfr.'s Type	Pole Throw	Circuit	Dim. A		EACH		
				In.	mm	1-24	25-99	100-499
870-9934	MS12ANG03	SPDT	On-none-on	0.268	6.8	3.60	3.39	3.04
870-5019	MS12ANW03	SPDT	On-none-on	0.268	6.8	3.36	3.08	2.84
870-9935	MS13ANG03	SPDT	On-off-on	0.319	8.1	4.01	3.67	3.39
870-5020	MS13ANW03	SPDT	On-off-on	0.319	8.1	3.78	3.47	3.20
870-5021	MS22BNG03	DPDT	On-none-on	0.268	6.8	5.78	5.30	4.89
870-5022	MS22BNW03	DPDT	On-none-on	0.268	6.8	5.32	4.88	4.50
870-5023	MS23BNG03	DPDT	On-off-on	0.319	8.1	6.25	5.73	5.29
870-5024	MS23BNW03	DPDT	On-off-on	0.319	8.1	5.79	5.30	4.90

Right Angle PC Terminals

870-9938	MS12ASG30	SPDT	On-none-on	0.268	6.8	4.26	3.91	3.61
870-5025	MS12ASW30	SPDT	On-none-on	0.268	6.8	4.32	3.96	3.66
870-9939	MS13ASG30	SPDT	On-off-on	0.319	8.1	4.97	4.56	4.21
870-5026	MS13ASW30	SPDT	On-off-on	0.319	8.1	4.75	4.35	4.02
870-9940	MS22ASG30	DPDT	On-none-on	0.268	6.8	7.47	6.85	6.32
870-5027	MS22ASW30	DPDT	On-none-on	0.268	6.8	7.01	6.43	5.93
870-9941	MS23ASG30	DPDT	On-off-on	0.319	8.1	7.94	7.28	6.72
870-5028	MS23ASW30	DPDT	On-off-on	0.319	8.1	7.47	6.85	6.32

Vertical PC Terminals

870-5029	MS12ASG40	SPDT	On-none-on	0.268	6.8	4.93	4.52	4.17
870-5030	MS12ASW40	SPDT	On-none-on	0.268	6.8	4.69	4.30	3.97
870-9943	MS13ASG40	SPDT	On-off-on	0.319	8.1	5.34	4.90	4.52
870-5031	MS13ASW40	SPDT	On-off-on	0.319	8.1	5.12	4.69	4.33
870-9944	MS22ASG40	DPDT	On-none-on	0.268	6.8	8.38	7.61	6.95
870-5032	MS22ASW40	DPDT	On-none-on	0.268	6.8	7.75	7.11	6.56
870-5033	MS23ASG40	DPDT	On-off-on	0.319	8.1	8.68	7.96	7.34
870-5034	MS23ASW40	DPDT	On-off-on	0.319	8.1	8.22	7.53	6.95

Panel Mounting with Solder Lug Terminals

870-9930	MS12AFW01	SPDT	On-none-on	0.268	6.8	3.15	2.89	2.67
870-5035	MS12AFG01	SPDT	On-none-on	0.268	6.8	3.09	2.84	2.62
870-9932	MS22AFW01	DPDT	On-none-on	0.268	6.8	4.91	4.50	4.16
870-5036	MS22AFG01	DPDT	On-none-on	0.268	6.8	5.38	4.93	4.55

ALLIED ► 239