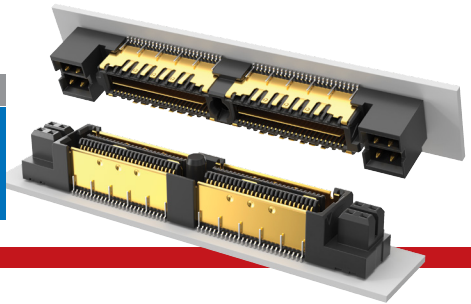




(0.635 mm) .025" PITCH • QMSS/QFSS SERIES

NRZ  
14  
Gbps



**QMSS**  
Board Mates:  
QFSS

**QFSS**  
Board Mates:  
QMSS

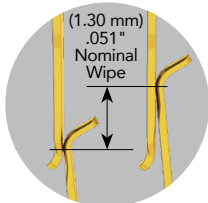
**QMSS/QFSS**  
Standoffs:  
SO

## SPECIFICATIONS

**Insulator Material:**  
Liquid Crystal Polymer  
**Terminal, Ground Plane & Shield Material:**  
Phosphor Bronze  
**Plating:**  
Au over 50  $\mu$ " (1.27  $\mu$ m) Ni  
(Tin on Ground Plane Tail)  
**Operating Temp Range:**  
-55 °C to +125 °C  
**Current Rating:**  
Contact:  
3.4 per pin (4 adjacent pins powered)  
Ground Plane:  
7.8 A per ground plane  
(2 ground planes powered)  
**Voltage Rating:**  
300 VAC/424 VDC

## PROCESSING

**Lead-Free Solderable:**  
Yes  
**SMT Lead Coplanarity:**  
(0.10 mm) .004" max  
(026-078)  
**Board Stacking:**  
For applications requiring more than two connectors contact [ipg@samtec.com](mailto:ipg@samtec.com)



**Note:**  
Some lengths, styles and options are non-standard, non-returnable.

QMSS	PINS PER ROW NO. OF PAIRS	06.75	PLATING OPTION	TYPE	A	OTHER OPTION
	-026, -052, -078 (52 total pins per bank / 40 signals + 12 grounds to shield = -D)		-L = 10 $\mu$ " (0.25 $\mu$ m) Gold on contact, Matte Tin on tail	-D = Single- Ended		-K = (5.50 mm) .217" DIA Polyimide film Pick & Place Pad (N/A with -PC4)
	-016, -032, -048 (16 pairs per bank = -D-DP)			-D-DP = Differential Pair		-PC4 = 4 Power Pins/End (N/A with -A)

**PACKAGING OPTION**

Tape & Reel Options (-TR & -FR) available. Visit series web page and view engineering prints for complete specifications.

View complete specifications at: [samtec.com?QMSS](http://samtec.com?QMSS)

QFSS	PINS PER ROW NO. OF PAIRS	04.25	PLATING OPTION	TYPE	A	OTHER OPTION
	-026, -052, -078 (52 total pins per bank / 40 signals + 12 grounds to shield = -D)		-L = 10 $\mu$ " (0.25 $\mu$ m) Gold on contact, Matte Tin on tail	-D = Single- Ended		-PC4 = 4 Power Pins/End (N/A with -A)
	-016, -032, -048 (16 pairs per bank = -D-DP)			-D-DP = Differential Pair		

**PACKAGING OPTION**

Tape & Reel Options (-TR & -FR) available. Visit series web page and view engineering prints for complete specifications.

View complete specifications at: [samtec.com?QFSS](http://samtec.com?QFSS)