



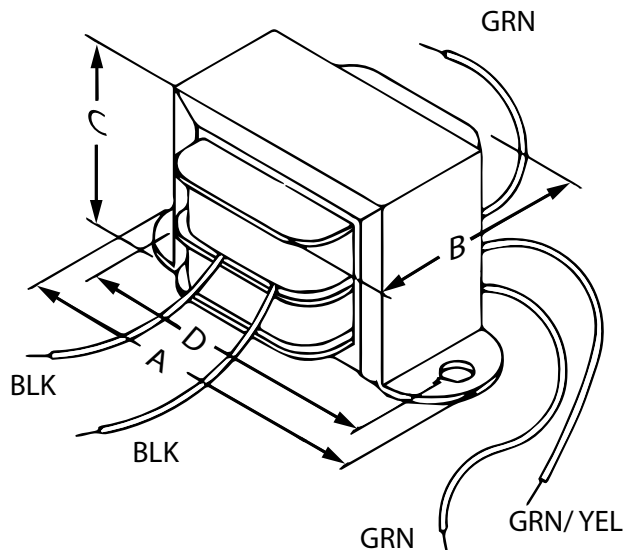
**HAMMOND  
MANUFACTURING®**

[www.hammondmfg.com](http://www.hammondmfg.com)

# 166G6B

**Power Transformer - Low Voltage/ Filament  
Economical Single Primary - Open Style Chassis Mount**

## Features



- Economical single primary 115 VAC, 60 Hz. (or 117 50/60 Hz. see table below)
- Open style, channel bracket, chassis mount.
- Minimum 6" long leads.
- Dual bobbin design - no electrostatic shield required.
- Class B insulation (130 degrees, C) for extra protection - **UL listed** as a Class A (105 degree, C) design
- Hi-Pot test of 2,000V RMS.
- **CSA certified.**

Overall Dimensions (in. / mm)	
A	2.38 / 60.5
B	1.38 / 35.1
C	1.38 / 35.1
Hole to Hole Mounting Dims	
D	2 / 50.8
E	/
Mounting Hole Sizes	
Width-wise	0.187 / 4.7
Depth-wise	/
Electrical	
Size (VA)	3.78
Primary	117V 50/60 Hz.
Secondary VAC	6.3 C.T.
Secondary Amps	0.6

## Schematic

