

HPX12-71-P1M



3.7 m | 12 ft High Performance Parabolic Shielded Antenna, dual-polarized, 7.125–7.750 GHz, CPR112G, gray antenna, standard white radome with flash, standard pack—two-piece reflector

Product Classification

Product Type Microwave antenna

General Specifications

Antenna Type	HPX - High Performance Parabolic Shielded Antenna, dual-polarized
Diameter, nominal	3.7 m 12 ft
Packing	Standard pack
Radome Color	White
Radome Material	Standard
Reflector Construction	Two-piece reflector
Antenna Input	CPR112G
Antenna Color	Gray
Antenna Type	HPX - High Performance Parabolic Shielded Antenna, dual-polarized
Diameter, nominal	3.7 m 12 ft
Flash Included	Yes
Polarization	Dual

Electrical Specifications

Operating Frequency Band	7.125 – 7.750 GHz
Operating Frequency Band	7.125 – 7.750 GHz
Radiation Pattern Envelope Reference (RPE)	2758E

Mechanical Specifications

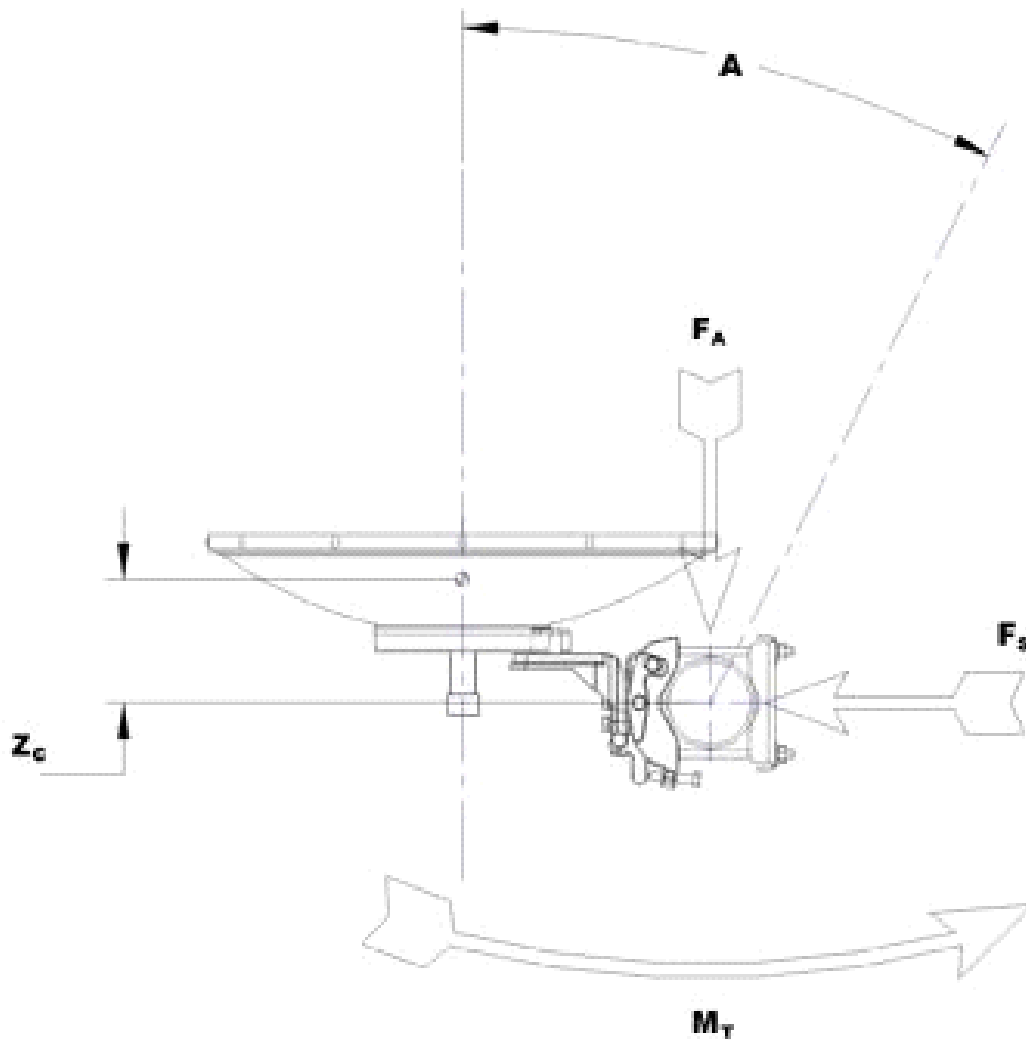
Fine Azimuth Adjustment	±5°
Fine Elevation Adjustment	±5°
Mounting Pipe Diameter	115 mm 4.5 in
Net Weight	431 kg 950 lb
Side Struts, Included	1 inboard 1 outboard
Side Struts, Optional	2 outboard

Wind Velocity Operational	110 km/h 68 mph
Wind Velocity Survival Rating	200 km/h 125 mph

Wind Forces At Wind Velocity Survival Rating

Angle α for MT Max	-110 °
Axial Force (FA)	25390 N 5708 lbf
Force on Inboard Strut Side	8000 N 1798 lbf
Force on Outboard Strut Side	11500 N 2585 lbf
Side Force (FS)	12577 N 2827 lbf
Twisting Moment (MT)	-14132 N-m -10423 ft lb
Weight with 1/2 in (12 mm) Radial Ice	895 kg 1973 lb
Zcg with 1/2 in (12 mm) Radial Ice	914 mm 36 in
Zcg without Ice	808 mm 32 in

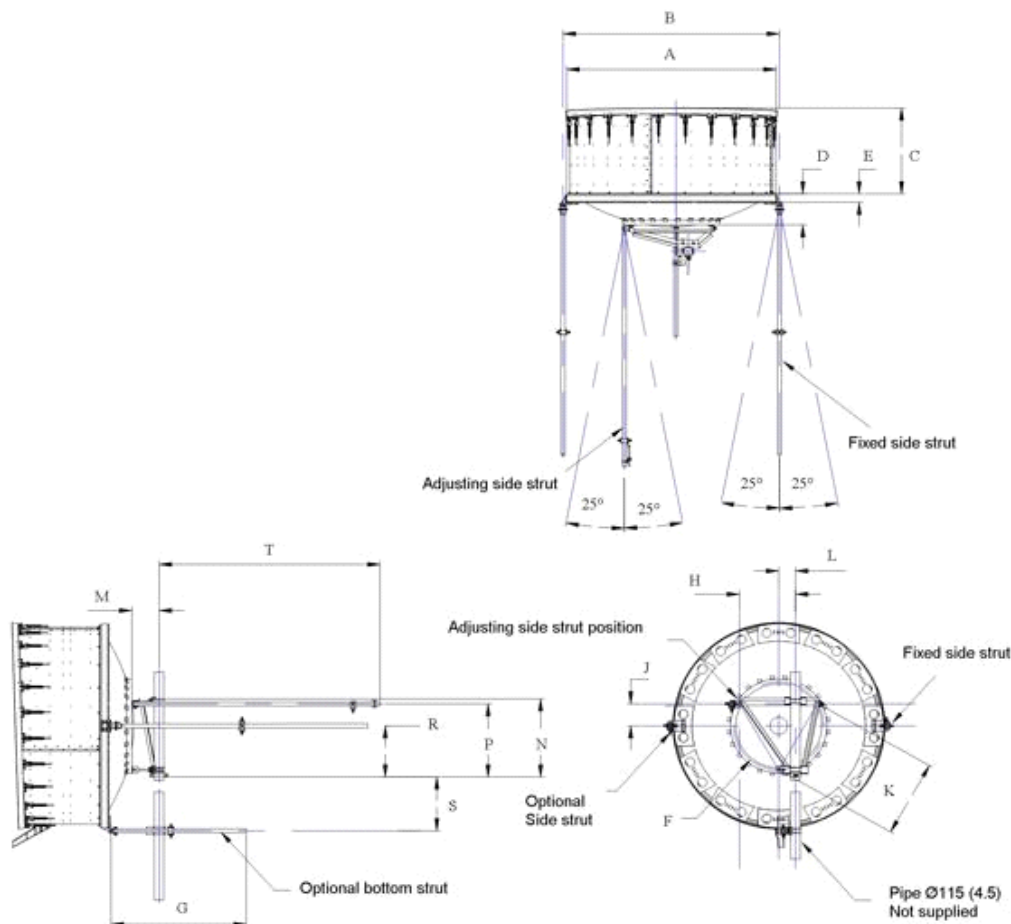
Wind Forces At Wind Velocity Survival Rating Image



Packed Dimensions

Gross Weight, Packed Antenna	730.0 kg 1609.4 lb
Height	2140.0 mm 84.3 in
Length	3990.0 mm 157.1 in
Volume	13.1 m ³
Width	1530.0 mm 60.2 in

Antenna Dimensions And Mounting Information



ANTENNA DIMENSIONS			
All dimensions in mm (inches)			
A	3775 (148.5)	K	1205 (47.5)
B	3915 (154.5)	L	215 (8.5)
C	1090 (43.0)	M	330 (13)
D	685 (27.0)	N	1225 (48.25)
E	145 (5.75)	P	1145 (45.0)
F	1430 (56.25)	R	790 (31.0)
G	1525 (60)	S	1140 (44.75)
H	835 (32.75)	T	3050 (120)
J	355 (14.0)		

Regulatory Compliance/Certifications

Agency

ISO 9001:2015

Classification

Designed, manufactured and/or distributed under this quality management system



* Footnotes

Axial Force (FA)

Maximum forces exerted on a supporting structure as a result of wind from the most critical direction for this parameter. The individual maximums specified may not occur simultaneously. All forces are referenced to the mounting pipe.

Operating Frequency Band

Bands correspond with CCIR recommendations or common allocations used throughout the world. Other ranges can be accommodated on special order.

Packing

Andrew standard packing is suitable for export. Antennas are shipped as standard in totally recyclable cardboard or wire-bound crates (dependent on product). For your convenience, Andrew offers heavy duty export packing options.

Radiation Pattern Envelope Reference (RPE)

Radiation patterns define an antenna's ability to discriminate against unwanted signals. Under still dry conditions, production antennas will not have any peak exceeding the current RPE by more than 3dB, maintaining an angular accuracy of $\pm 1^\circ$ throughout

Side Force (FS)

Maximum side force exerted on the mounting pipe as a result of wind from the most critical direction for this parameter. The individual maximums specified may not occur simultaneously. All forces are referenced to the mounting pipe.

Twisting Moment (MT)

Maximum forces exerted on a supporting structure as a result of wind from the most critical direction for this parameter. The individual maximums specified may not occur simultaneously. All forces are referenced to the mounting pipe.

Wind Velocity Operational

The wind speed where the antenna deflection is equal to or less than 0.1 degrees. In the case of ValuLine antennas, it is defined as a maximum deflection of 0.3 x the 3 dB beam width of the antenna.

Wind Velocity Survival Rating

The maximum wind speed the antenna, including mounts and radomes, where applicable, will withstand without permanent deformation. Realignment may be required. This wind speed is applicable to antenna with the specified amount of radial ice.

HPX12-71



3.7 m | 12 ft High Performance Parabolic Shielded Antenna, dual-polarized,
7.125–7.750 GHz

Product Classification

Product Type Microwave antenna

General Specifications

Antenna Type HPX - High Performance Parabolic Shielded Antenna, dual-polarized
Diameter, nominal 3.7 m | 12 ft
Polarization Dual

Electrical Specifications

Operating Frequency Band 7.125 – 7.750 GHz
Radiation Pattern Envelope Reference (RPE) 2758E

Mechanical Specifications

Fine Azimuth Adjustment $\pm 5^\circ$
Fine Elevation Adjustment $\pm 5^\circ$
Mounting Pipe Diameter 115 mm | 4.5 in
Net Weight 431 kg | 950 lb
Side Struts, Included 1 inboard | 1 outboard
Side Struts, Optional 2 outboard
Wind Velocity Operational 110 km/h | 68 mph
Wind Velocity Survival Rating 200 km/h | 125 mph

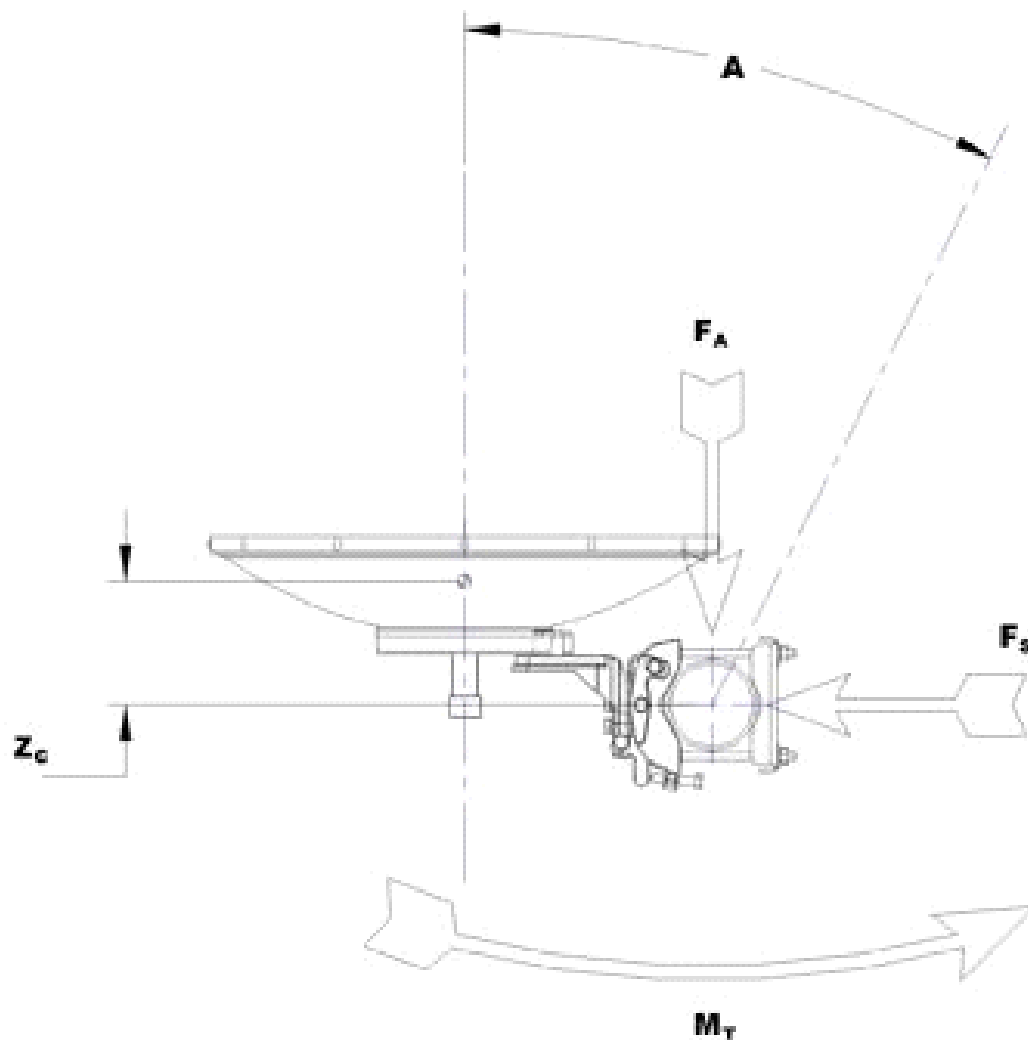
Wind Forces At Wind Velocity Survival Rating

Angle α for MT Max -110°
Axial Force (FA) 25390 N | 5708 lbf
Force on Inboard Strut Side 8000 N | 1798 lbf
Force on Outboard Strut Side 11500 N | 2585 lbf
Side Force (FS) 12577 N | 2827 lbf
Twisting Moment (MT) -14132 N-m | -10423 ft lb

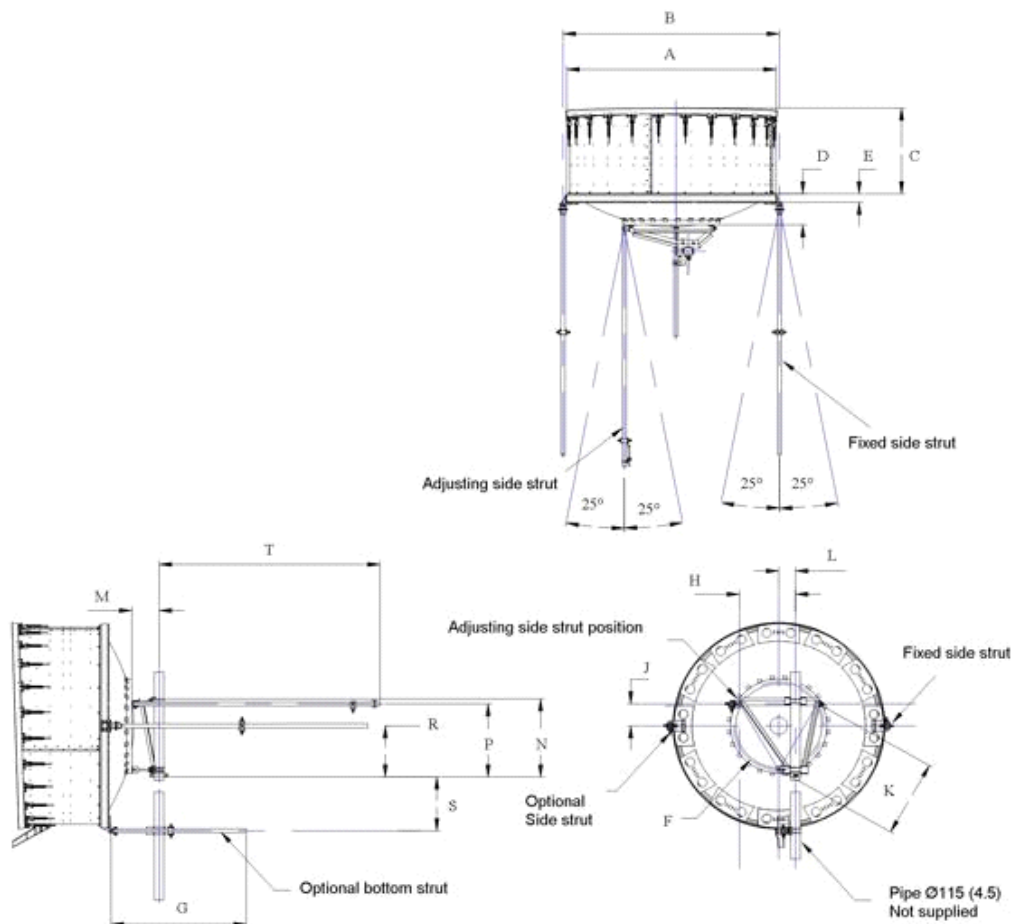
HPX12-71

Weight with 1/2 in (12 mm) Radial Ice	895 kg 1973 lb
Zcg with 1/2 in (12 mm) Radial Ice	914 mm 36 in
Zcg without Ice	808 mm 32 in

Wind Forces At Wind Velocity Survival Rating Image



Antenna Dimensions And Mounting Information



ANTENNA DIMENSIONS			
All dimensions in mm (inches)			
A	3775 (148.5)	K	1205 (47.5)
B	3915 (154.5)	L	215 (8.5)
C	1090 (43.0)	M	330 (13)
D	685 (27.0)	N	1225 (48.25)
E	145 (5.75)	P	1145 (45.0)
F	1430 (56.25)	R	790 (31.0)
G	1525 (60)	S	1140 (44.75)
H	835 (32.75)	T	3050 (120)
J	355 (14.0)		

Regulatory Compliance/Certifications

Agency

ISO 9001:2015

Classification

Designed, manufactured and/or distributed under this quality management system



* Footnotes

Axial Force (FA)

Maximum forces exerted on a supporting structure as a result of wind from the most critical direction for this parameter. The individual maximums specified may not occur simultaneously. All forces are referenced to the mounting pipe.

Operating Frequency Band

Bands correspond with CCIR recommendations or common allocations used throughout the world. Other ranges can be accommodated on special order.

Radiation Pattern Envelope Reference (RPE)

Radiation patterns define an antenna's ability to discriminate against unwanted signals. Under still dry conditions, production antennas will not have any peak exceeding the current RPE by more than 3dB, maintaining an angular accuracy of $\pm 1^\circ$ throughout

Side Force (FS)

Maximum side force exerted on the mounting pipe as a result of wind from the most critical direction for this parameter. The individual maximums specified may not occur simultaneously. All forces are referenced to the mounting pipe.

Twisting Moment (MT)

Maximum forces exerted on a supporting structure as a result of wind from the most critical direction for this parameter. The individual maximums specified may not occur simultaneously. All forces are referenced to the mounting pipe.

Wind Velocity Operational

The wind speed where the antenna deflection is equal to or less than 0.1 degrees. In the case of ValuLine antennas, it is defined as a maximum deflection of $0.3 \times$ the 3 dB beam width of the antenna.

Wind Velocity Survival Rating

The maximum wind speed the antenna, including mounts and radomes, where applicable, will withstand without permanent deformation. Realignment may be required. This wind speed is applicable to antenna with the specified amount of radial ice.