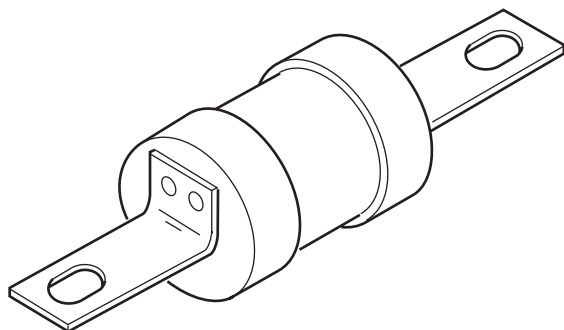


Industrial HRC Fuse Link

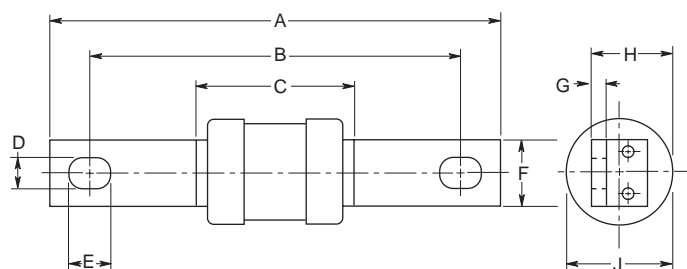
31 x 138mm, BS88, IEC 269-1
Center Bolted Tags

DD

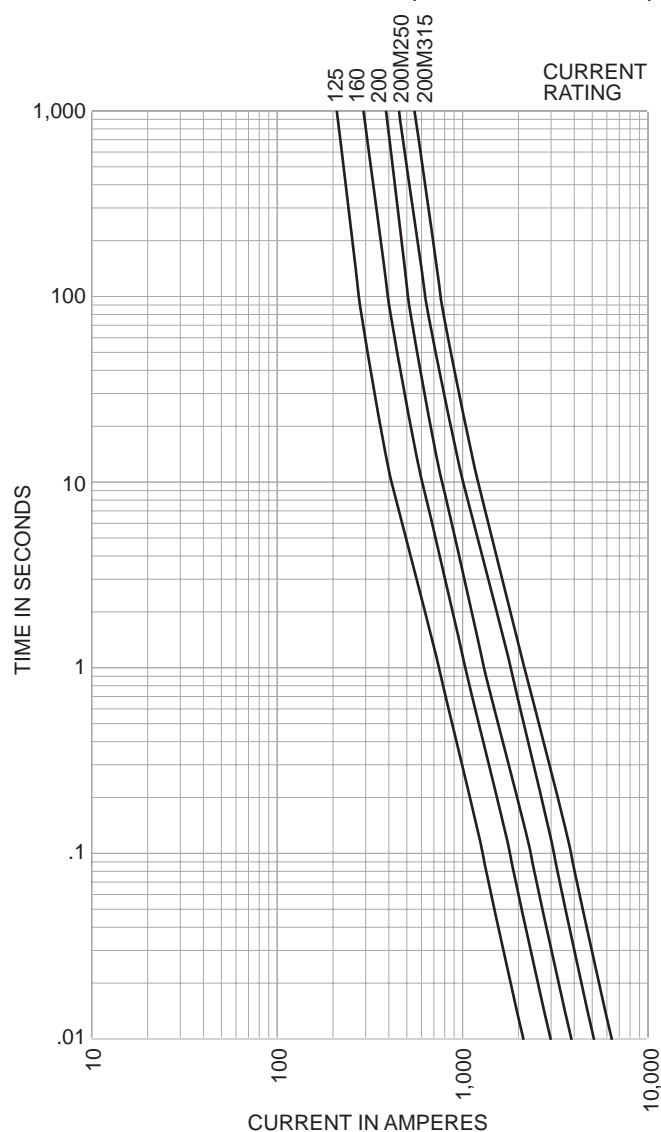


CATALOG SYMBOL: DD
INDUSTRIAL HRC FUSE
CENTER BOLTED TAGS
PACKAGE QUANTITY: 5
80kA INTERRUPTING RATING
MOUNTS IN 200DF FUSEBLOCK

Dimensional Data:



Time-Current Characteristic Curve (Full Size Curves Available)



Electrical Characteristics

Catalog Number	Ampere Rating	I ² T (Amp ² Seconds)			Nom Watts Loss	Rated Voltage	Dimensions (Inches/mm)								
		Pre-Arcing	Total At 240V	Total At 415V			A	B	C	D	E	F	G	H	J
DD125	125	29,500	50,000	71,000	11	415AC	136.0	111.0	47.0	9.0	12.5	19.0	0.13 3.23	22.5	1.22 31.0
DD160	160	57,000	97,000	135,000	13										
DD200	200	120,000	205,000	290,000	14										
DD200M250	200M250	200,000	—	480,000	18										
DD200M315	200M315	265,000	—	635,000	27										

The only controlled copy of this BIF document is the electronic read-only version located on the Bussmann Network Drive. All other copies of this BIF document are by definition uncontrolled. This bulletin is intended to clearly present comprehensive product data and provide technical information that will help the end user with design applications. Bussmann reserves the right, without notice, to change design or construction of any products and to discontinue or limit distribution of any products. Bussmann also reserves the right to change or update, without notice, any technical information contained in this bulletin. Once a product has been selected, it should be tested by the user in all possible applications.

Mouser Electronics

Authorized Distributor

Click to View Pricing, Inventory, Delivery & Lifecycle Information:

[Cooper Bussmann:](#)

[DD125](#) [DD200M250](#) [DD200M315](#)