

MICRO SWITCH

FREEPORT ILLINOIS, U.S.A
A DIVISION OF HONEYWELL

FED. MFG. CODE 91929

SWITCH - BASIC

CATALOG LISTING

6SE175-3

6SE175-3

PAGE 1 OF 1

M

DRAWING
NUMBER

87

85

83

81

REVISIONS

A CO-34213

JAL
26 SEPT 74

B CO-34757

JAL
20 JAN 75

C CO-56208

G J W
27 NOV 84

D CO-57041A

CJH
21 MAR 85

E CO-59012

JAP
27 MAR 86

F CO-94274

DLM
MAR 99

FORMTEK

FO-52848

DRAWN

REPLACES

RELEASE NO. PR-4068

CHECK

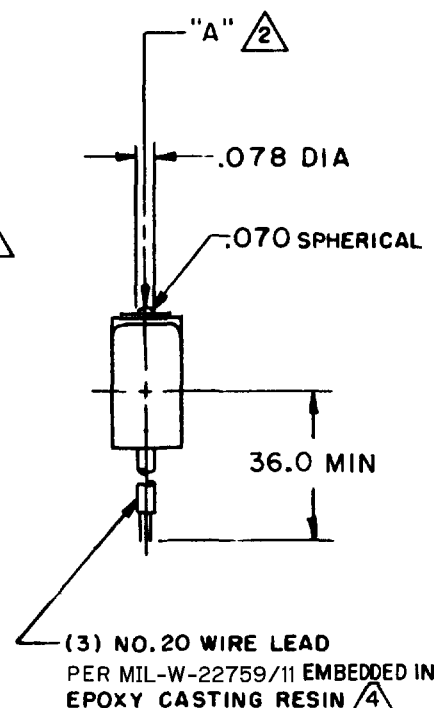
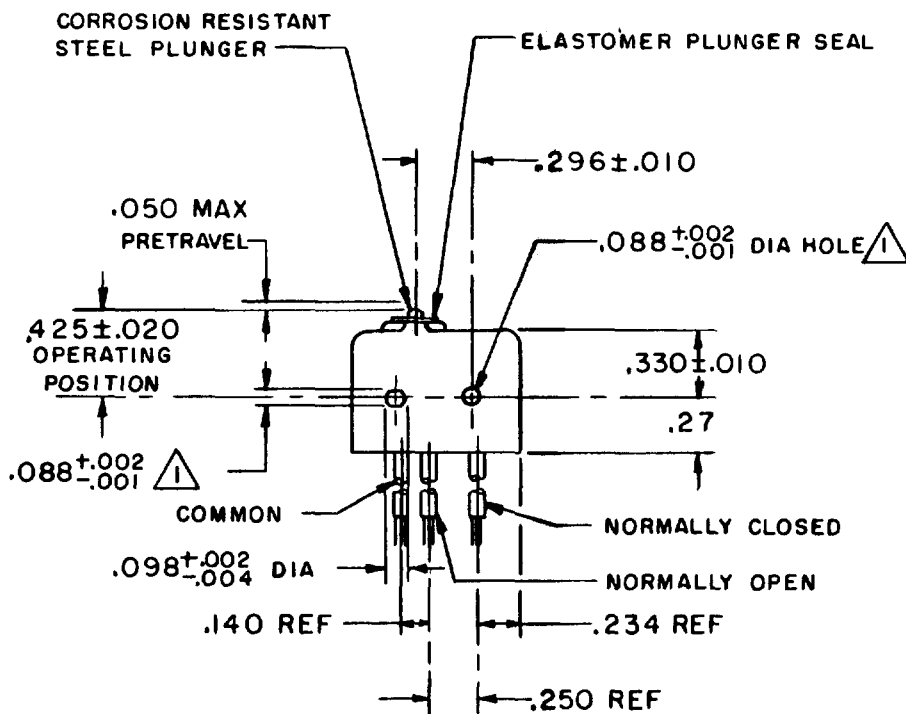
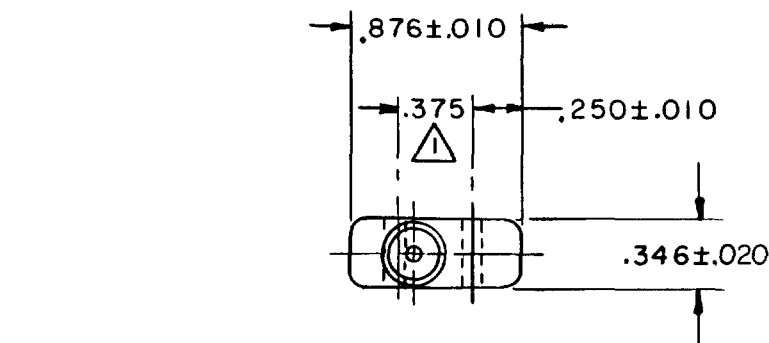
CHECK

CHECK

CHECK

CHECK

CHECK



NOTE -

- 1 MOUNTING HOLES WILL ACCEPT .087 MAX DIA PINS OR SCREWS ON .375±.002 CENTERS
- 2 ACTUATION IN LINE WITH ARROW "A" IS RECOMMENDED
- 3 WEIGHT OF SWITCH ONLY IS .26 OZ MAX, WEIGHT OF SWITCH WITH WIRE LEADS IS .60 OZ MAX
- 4 WIRE LEADS MARKED WITH CIRCUIT IDENTIFICATION AND WIRE GAGE (CLOSED-20, OPEN-20 AND COMMON-20) PER MIL-W-5088

THIS DRAWING COVERS A PROPRIETARY ITEM AND IS THE PROPERTY OF MICRO SWITCH, A DIVISION OF HONEYWELL. THIS DRAWING IS NOT TO BE COPIED OR USED WITHOUT THE APPROVAL OF MICRO SWITCH.

CHARACTERISTICS

OPERATING FORCE - - - - - 5-17 OZ
RELEASE FORCE - - - - - 4 OZ MIN
RELEASE TRAVEL - - - - - .004 MIN
DIFFERENTIAL TRAVEL - - - - .004 MAX
OVERTRAVEL - - - - - .003 MIN

ELECTRICAL DATA

CONTACT ARRANGEMENT
S P D T
250 VAC - - - - - 5 AMP
30 VOLTS DC RATING
INDUCTIVE - - - - - SEA LEVEL - - 3 AMP
50,000 FT - - - 2.5 AMP
RESISTIVE - - - - - SEA LEVEL - - 5 AMP
50,000 FT - - - 5 AMP
MAXIMUM INRUSH - - - - - 24 AMP

SCALE FULL

DO NOT SCALE PRINT

UNLESS OTHERWISE NOTED
DIMENSIONS ARE IN INCHES
TOLERANCES ARE

ONE PLACE (.0) ± .030
TWO PLACE (.00) ± .015
THREE PLACE (.000) ± .005
ANGLES ±

WEIGHT 3

Mouser Electronics

Authorized Distributor

Click to View Pricing, Inventory, Delivery & Lifecycle Information:

[Honeywell:](#)

[6SE175-3](#)