

4

3

2

1

THIS DRAWING IS UNPUBLISHED.

RELEASED FOR PUBLICATION

© COPYRIGHT

ALL RIGHTS RESERVED.

LOC

DIST


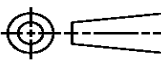
REVISIONS

P	LTR	DESCRIPTION	DATE	DWN	APVD
	B1	ECR-14-008934	14JUN2014	GK	HMR

REPLACED BY OCEAN STYLE APPLICATOR PART
NUMBER 2266212-1

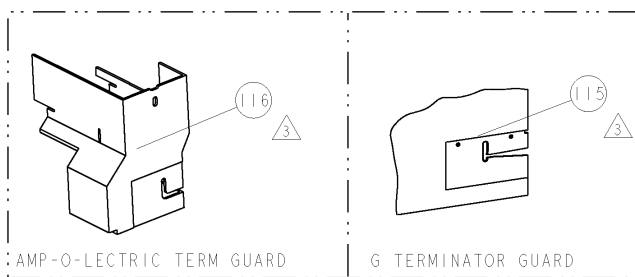
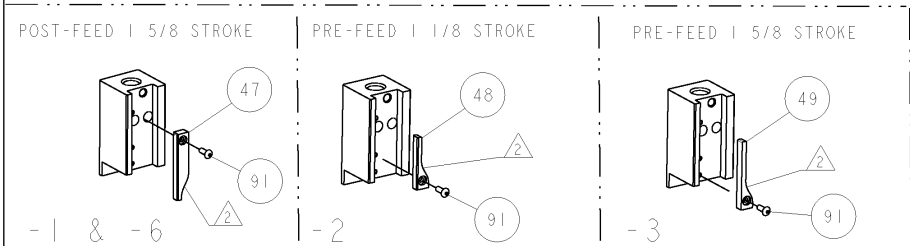
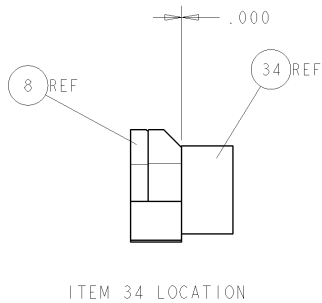
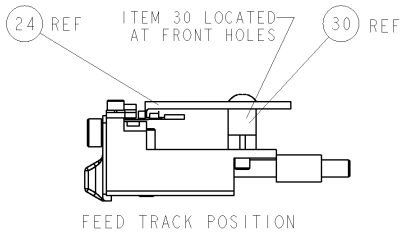
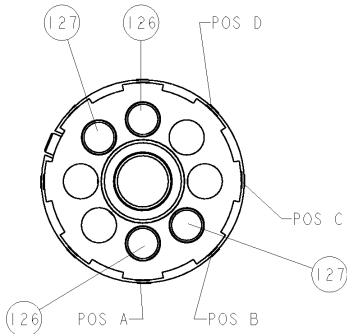
FOR REPLACEMENT PARTS FOR APPLICATOR 1852388
REFER TO ADDITIONAL PAGE(S). SPARE PARTS KIT (IF LISTED)
WILL REMAIN AVAILABLE.

THE REPLACEMENT OCEAN STYLE APPLICATOR HAS THE
SAME TERMINATOR/PRESS INTERFACE AS APPLICATOR
FIG 1

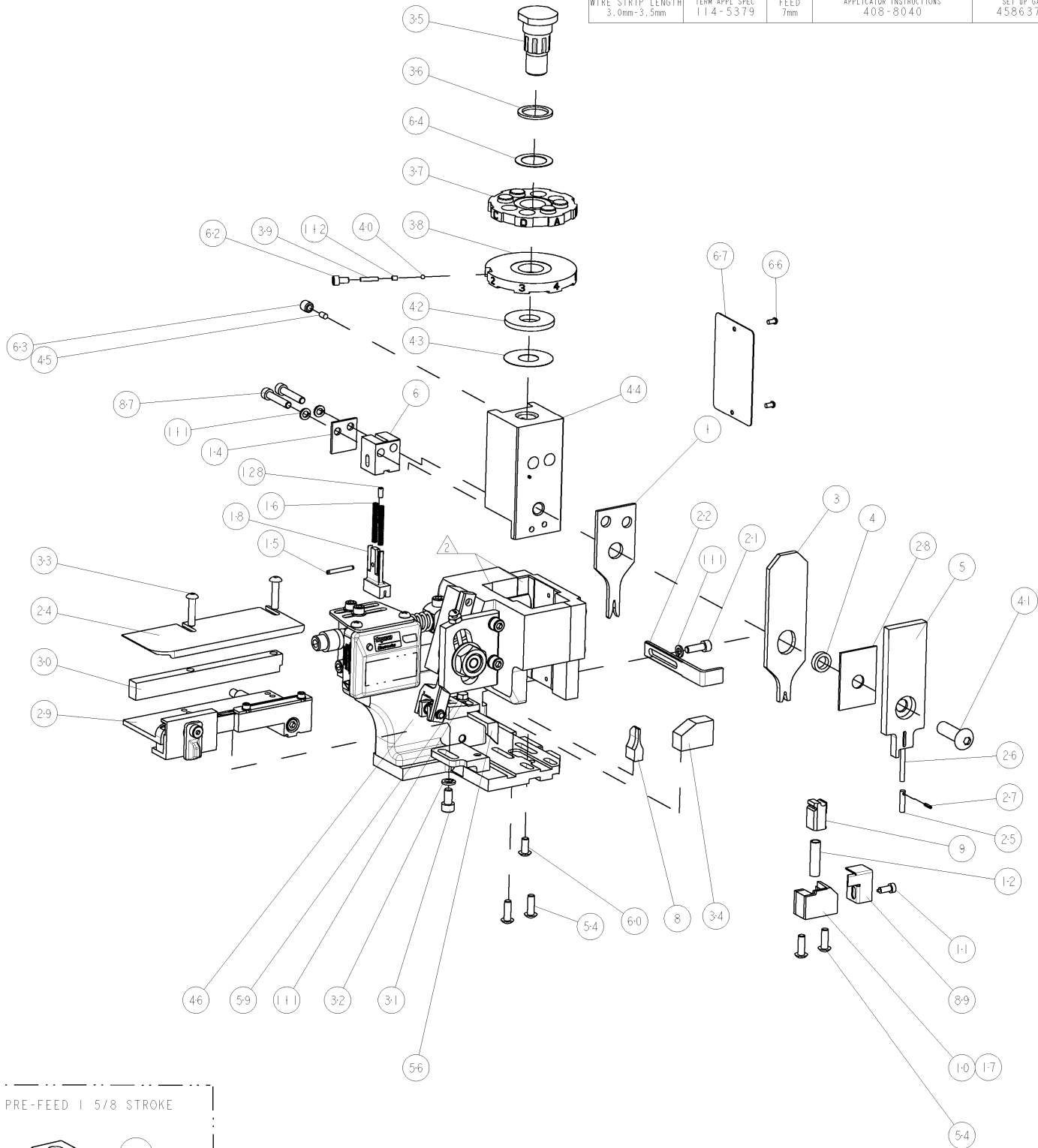
THIS DRAWING IS A CONTROLLED DOCUMENT.		DWN GOPALAKRISHNA HV		 TE Connectivity			
DIMENSIONS:		CHK RAGHAVENDRA					
		APVD RAGHAVENDRA		NAME SIDE FEED HDM APPLICATOR			
		PRODUCT SPEC					
		APPLICATION SPEC					
MATERIAL		WEIGHT		SIZE A3	CAGE CODE	DRAWING NO C- 1852388	RESTRICTED TO
FINISH		CUSTOMER DRAWING		SCALE		SHEET 1 OF 2	REV B1

8				7			
THIS DRAWING IS UNPUBLISHED.				RELEASED FOR PUBLICATION			
20				20			
BY TYCO ELECTRONICS CORPORATION. ALL RIGHTS RESERVED.							
COPYRIGHT 20							
PART NUMBER	REV	FIRST USED	POWER UNIT	FEED TYPE	DESCRIPTION		
1852388-1	A	122500-1	LEADMAKER	POST FEED	CUTS CARRIER		
1852388-2	B	565435-5	BENCH MODEL K	PRE FEED	CUTS CARRIER		
1852388-3	B	354500-1	BENCH MODEL G	PRE FEED	CUTS CARRIER		
1852388-6	A	122500-1	LEADMAKER	POST FEED	CONTINUOUS CARRIER		
7-1852388-7	A	-	-	-	SPARE PARTS		


- △ RECOMMENDED SPARE PARTS
△ GREASE LIGHTLY
△ GUARD MUST BE IN PLACE WHEN OPERATING APPLICATOR IN A BENCH MACHINE



TERMINAL NAME: MICRO QUADLOK SYSTEM					
TYCO PN	-	AMP TERMINAL - AMP CRIMP SPECS			
1827855-2	-				
-	-	PAD LTR	CRIMP HEIGHT	WIRE SIZE	
-	-	A	0.84mm±0.03mm [.033±.001]	0.50mm	
-	-	B	0.71mm±0.03mm [.028±.001]	0.35mm	
-	-	C	-	-	
-	-	D	-	-	
-	-	CRIMP	SIZE	TYPE	RANGE
-	-	WIRE	1.16mm [.046]	F	0.35-0.50mm
-	-	INSUL	1.40mm [.055]	O	1.1-1.4mm
WIRE STRIP LENGTH	TERM APPL SPEC	FEED	APPLICATOR INSTRUCTIONS		SET UP GAGE
3.0mm-3.5mm	114-5379	7mm	408-8040		458637-1



-	1	1	1	1	-	2-21008-1	SCR, SET, SELF LOCKING 1/4-20 X .250	128
-	2	2	2	2	-	7-354779-4	PIN, WIRE DISC, .3360	127
-	2	2	2	2	-	6-354779-2	PIN, WIRE DISC, .3300	126
△	-	-	REF	-	..	455749-1	GUARD WINDOW	116
△	-	-	REF	-	..	679532-1	INSERT, GUARD	115
-	1	1	1	1	-	690603-1	SPRING ASSIST AMP-O-MATOR APPLICATOR	112
-	4	4	4	4	-	21024-4	WASHER, SPRG LOCK, REG NO 8	111
-	1	1	1	1	-	1-21002-7	SCR, BTN SKT HD CAP 6-32 X .375	91
-	1	1	1	1	-	318563-1	GUARD, FRONT CHIP	89
-	2	2	2	2	-	3-21000-0	SCR, SKT HD CAP 8-32 X .875	87
-	1	1	1	1	-	4088040	SF APPL INST 408-8040	72
-	1	1	1	1	-	217238-1	GENERAL INSTRUCTION PKG	71
-	1	1	1	1	-	461264-1	PLATE, IDENTIFICATION	67
-	2	2	2	2	-	21017-2	SCREW, DRIVE	66
-	1	1	1	1	-	986950-1	WASHER, FLAT PRECISION	64
-	1	1	1	1	-	21009-2	SCR, SET, SELF LOCKING 1/4-20 X .250	63
-	1	1	1	1	-	23030-1	SCR, SKT HD CAP 6-32 X .25	62
-	1	1	1	1	-	22733-8	SCR, BHSC, SELF-LOCKING, 8-32 X .375	60
-	1	1	1	1	-	2-22603-0	SCR, HEX HD CAP 8-32 X .312	59
-	1	1	1	1	-	458537-2	PAWL, FEED	56
-	4	4	4	4	-	2-21002-2	SCR, BTN SKT HD CAP 8-32 X .500	54
-	-	1	-	-	..	690602-6	CAM, PRE FEED, 1 5/8	49
-	-	1	-	-	..	690602-5	CAM, PRE FEED, 1 1/8	48
-	1	-	-	1	-	690501-4	CAM, POST FEED, 1 5/8	47
-	1	1	1	1	-	459456-1	APPL. BASIC SUB ASSY (SIDE WISE MOCA)	46
-	1	1	1	1	-	690191-1	PLUG,NYLON	45
-	1	1	1	1	-	1-455673-6	RAM, SIDE FEED	44
-	1	1	1	1	-	690125-1	SHIM SUB-ASSY	43
-	1	1	1	1	-	690124-1	WASHER, RAM (.115)	42
-	1	1	1	1	-	7-21002-9	SCR, BTN SKT HD CAP 5/16-24 X 1.00	41
-	1	1	1	1	-	23241-6	BALL, STEEL	40
-	1	1	1	1	-	690170-1	SPRING, COMPRESSION	39
-	1	1	1	1	-	690142-4	DISC, INSULATION	38
-	1	1	1	1	-	354777-1	WIRE DISC, ASSEMBLY	37
-	1	1	1	1	-	22480-5	SPRING, COMPRESSION	36
-	1	1	1	1	-	690212-1	POST, RAM	35
-	1	1	1	1	-	690786-7	TERMINAL SUPPORT	34
-	2	2	2	2	-	2-21002-4	SCR, BTN SKT HD CAP 8-32 X .750	33
-	1	1	1	1	-	21024-5	WASHER, SPRG LOCK, REG NO 10	32
-	1	1	1	1	-	3-21000-4	SCR, SKT HD CAP 10-32 X .375	31
-	1	1	1	1	-	1320908-9	SPACER, STRIP GUIDE	30
-	1	1	1	1	-	1633091-1	ASSEMBLY, STRIP GUIDE	29
-	1	1	1	1	-	1-455888-0	SPACER, CRIMPER	28
-	1	1	1	1	-	21028-2	PIN, SLOTTED SPRING .062 X .250	27
-	1	1	1	1	-	5-547505-2	SPRING, COMPRESSION	26
-	1	1	1	1	-	854769-1	HOLDER, INS	25
-	1	1	1	1	-	1320928-3	PLATE, STRIP GUIDE	24
-	1	1	1	1	-	690472-9	STRIPPER	22
-	1	1	1	1	-	2-21000-7	SCR, SKT HD CAP 8-32 X .500	21
-	1	1	1	1	-	1762987-5	TERMINAL HOLDER	18
△	-	-	-	-	-	679625-1	SHEAR HOLDER, FRONT (NO CUT)	17
-	2	2	2	2	-	4-22278-6	SPRING, COMPRESSION	16
-	1	1	1	1	-	4-21028-0	PIN, SLOTTED SPRING .094 X .750	15
-	1	1	1	1	-	455053-1	PLATE, RETAINING	14
-	1	1	1	1	-	3-22280-3	SPRING, COMPRESSION	12
-	1	1	1	1	-	1-690461-7	STOP, SHEAR	11
△	-	1	1	1	-	690459-1	SHEAR HOLDER, FRONT	10
△	-	1	1	1	-	462006-1	FLOATING SHEAR, FRONT	9
△	1	1	1	1	-	8-1633116-8	ANVIL, COMBINATION	8
-	1	1	1	1	-	455052-1	CARRIER, HOLD DOWN	6
-	1	1	1	1	-	854772-9	DEPRESSOR, SHEAR	5
-	1	1	1	1	-	3-238011-8	BLOCK, CRIMPER SPACER	4
△	1	1	1	1	-	1596888-5	CRIMPER, INSULATION	3
△	1	1	1	1	-	2-937157-1	WIRE CRIMPER	1

-77 -6 -3 -2 -1 U/M		PART NO	DESCRIPTION		ITEM NO
1. ALL DIMENSIONS ARE TO BE MAINTAINED UNLESS OTHERWISE SPECIFIED. 2. DIMENSIONS IN PARENTHESES ARE FOR INFORMATIONAL PURPOSES ONLY. 3. DIMENSIONS IN PARENTHESES ARE FOR INFORMATIONAL PURPOSES ONLY.					
DIMENSIONS: INCHES		TOLERANCES UNLESS OTHERWISE SPECIFIED:		NAME	
		OWN: B. HIGMAN 8DEC2006		tyco Tyco Electronics	
		CORN: T. ELBIN 8DEC2006		Harrisburg, PA 17105-3608	
		APPROV: T. BRENCHOFF 8DEC2006		SIDE FEED HDM APPLICATOR	
		PRODUCT SPEC		-	
APPLICATION SPEC		-		SIZE	
114-5379		CAGE CODE		DRAWING NO	
WEIGHT		A 00779		C = 1852388	
CUSTOMER DRAWING		SCALE		3:5	
SHEET		1		OF	
REV		B			
CUSTOMER VIEWABLE ASSEMBLY					