

PRODUCT NUMBER
91601-XXXXLF

INDICATES THE PRODUCT IS RoHS COMPATIBLE, NOTE 6.

- A: TAPE & REEL PACKAGING, HOUSING AND PICK-UP CAP COLOUR GREY
G: TAPE & REEL PACKAGING, HOUSING AND PICK-UP CAP COLOUR BLACK
FOR AVAILABILITY, SEE TA856.
AV: TAPE & REEL PACKAGING FOR VALEO, HOUSING AND
PICK-UP CAP COLOUR GREY.
NUMBER OF POSITIONS: 02 UP TO 25.
MORE THAN 25 POSITIONS ON SPECIAL REQUEST.

PLATING CODE

- 3= 0.76µm GOLD ON CONTACT AREA.
2µm MIN MATTE TIN ON TAIL.
4= 2µm MIN MATTE TIN FULL PLATED
1.27µm Ni MIN UNDERPLATING

NOTES:

- 1 - HOUSING & PICK UP CAP MATERIAL: HIGH TEMPERATURE THERMOPLASTIC GLASS FILLED FLAME RETARDANT PER UL 94 COLOR: GREY or BLACK
- 2 - TERMINAL MATERIAL: PHOSPHOR BRONZE.
- 3 - 2 UP TO 4 POSITIONS PRODUCT PACKED IN PLASTIC BOX.
5 UP TO 30 POSITIONS PRODUCT PACKED IN TUBE.
- 4 - TO DETERMINE DIMENSIONS:
N = NUMBER OF POSITIONS
EXAMPLE: 8 POS: (Nx2.54)-0.08=20.24 mm.
- 5 - RECOMMENDED IR PROFILE PER TA842.
- 6 - RoHS COMPATIBLE PRODUCT SPECIFICATIONS

d - PLATING:

- "LF" MEANS THE PRODUCT IS LEAD-FREE,
2µm MINIMUM MATTE TIN OVER 1.27µm
MINIMUM NICKEL UNDERPLATE.

b - MANUFACTURING PROCESS COMPATIBILITY

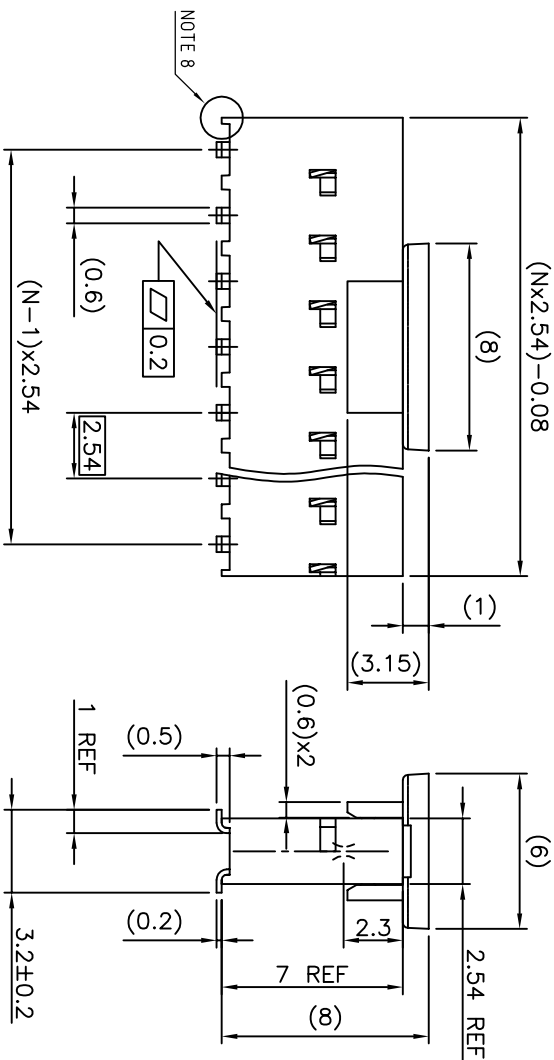
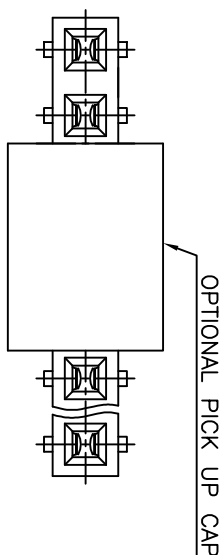
- THE HOUSING WILL WITHSTAND EXPOSURE TO 260°C PEAK
TEMPERATURE FOR 30 SECONDS MAX IN A CONVECTION,
INFRA-RED OR VAPOR PHASE OR REFLOW OVEN.

c - LABELING:

- MEETS PACKAGING SPECS AS PER GS-14-920
- d - LEGAL STATEMENT: SEE GS-47-0004

- 7 - HOUSING MADE FROM HIGH TEMPERATURE HALOGEN FREE RESIN
30% GLASS FILLED FLAME RETARDANT PER UL-94V-0 BLACK COLOUR.
OMIT 'HF' FROM PRODUCT NUMBER IF HTIS OPTION IS NOT REQUIRED

- 8 - END STAND-OFFS FOR 1x2 UP TO 1x5 POS
NO END STAND-OFFS FOR 1x6 UP TO 1x50 POS



mat'l. code		surface		tolerance		projection		product family	
ltr	ecm no	dr	date	ISO 1302	ISO 406	ISO 1101	mm	title	sheet no
AD	F10-0228	JCO	10.10.04	tolerances unless otherwise specified				BtB RECEIPT	91601
AE	F11-0093	JCO	11.08.18	angle				VERT SR SMT	91601
AF	F11-0043	LWU	12.02.23	linear	.004±.00x				91601
AG	B-19176	LWU	14.10.21	dr	D EGRAND	96.10.11			91601
AH	F07-0243	PNZ	07.08.14	chr	P NIZZI	96.10.11			91601
AI	F08-0103	PNZ	08.01.18	appd	P NZ	96.10.11			91601
aj		revision	AG	B					91601
ak		sheet	1	2					91601
al		index							91601

A

A

B

B

C

C

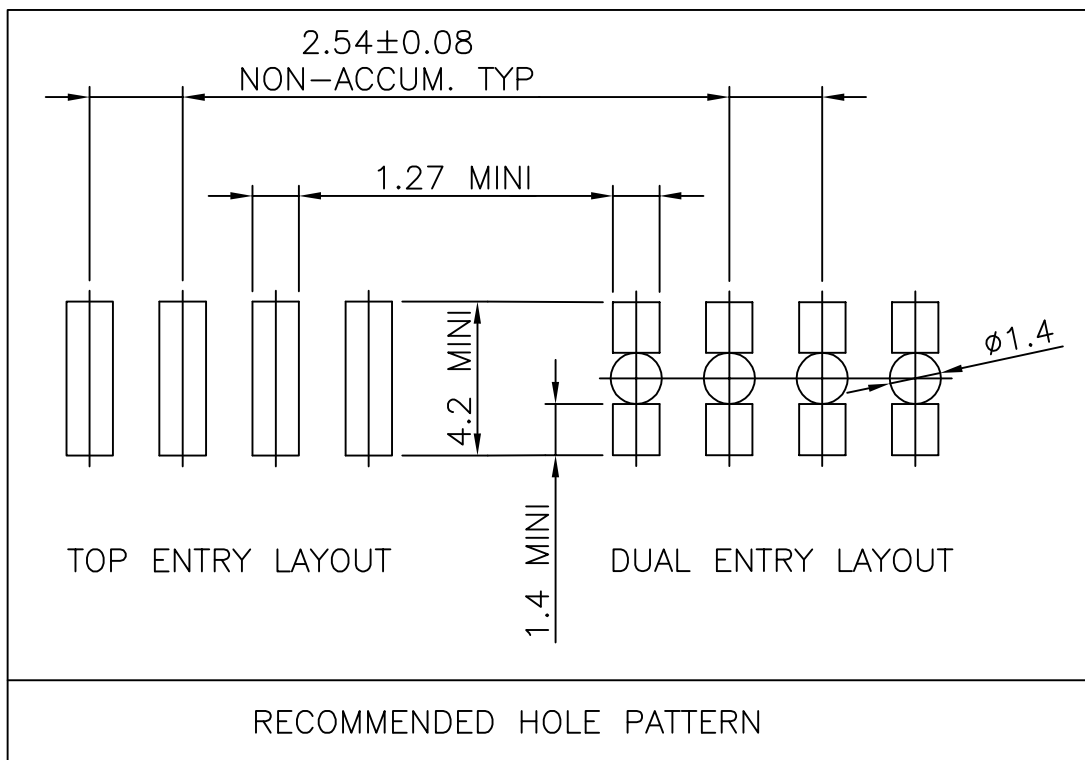


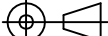

FCIconnect.com

Copyright FCI

D

D



mat'l. code SEE NOTES				surface ISO 1302 ✓			tolerance ISO 406 ISO 1101			projection 		product family DUBOX																																																																																																																																																																																																																																																																																																																																																																																																																																																																																																																																																																																																																																																																																																																																																																																																																																																																																																																																																																																																																																																																																																																																																																																																																																
ltr	ecn no	dr	date	tolerances unless otherwise specified					scale 1:1		title BtB RECEPT. VERT SR SMT																																																																																																																																																																																																																																																																																																																																																																																																																																																																																																																																																																																																																																																																																																																																																																																																																																																																																																																																																																																																																																																																																																																																																																																																																																	
A	F04-0347	DLE	04.11.10	angles	XX ±0.15																																																																																																																																																																																																																																																																																																																																																																																																																																																																																																																																																																																																																																																																																																																																																																																																																																																																																																																																																																																																																																																																																																																																																																																																																																							
B	F06-0204	DLE	06.06.23		linear XX ±0.05																																																																																																																																																																																																																																																																																																																																																																																																																																																																																																																																																																																																																																																																																																																																																																																																																																																																																																																																																																																																																																																																																																																																																																																																																																							
						±2°																																																																																																																																																																																																																																																																																																																																																																																																																																																																																																																																																																																																																																																																																																																																																																																																																																																																																																																																																																																																																																																																																																																																																																																																																																						
				dr	D LEGRAND			96.10.11			<div><div>FCI</div><div></div></div>																																																																																																																																																																																																																																																																																																																																																																																																																																																																																																																																																																																																																																																																																																																																																																																																																																																																																																																																																																																																																																																																																																																																																																																																																																	
				engr	P NIZZI			96.10.11																																																																																																																																																																																																																																																																																																																																																																																																																																																																																																																																																																																																																																																																																																																																																																																																																																																																																																																																																																																																																																																																																																																																																																																																																																				
				chr	D LE			96.10.11																																																																																																																																																																																																																																																																																																																																																																																																																																																																																																																																																																																																																																																																																																																																																																																																																																																																																																																																																																																																																																																																																																																																																																																																																																				
				appd	P NZ			96.10.11																																																																																																																																																																																																																																																																																																																																																																																																																																																																																																																																																																																																																																																																																																																																																																																																																																																																																																																																																																																																																																																																																																																																																																																																																																				
sheet index		revision sheet																																																																																																																																																																																																																																																																																																																																																																																																																																																																																																																																																																																																																																																																																																																																																																																																																																																																																																																																																																																																																																																																																																																																																																																																																																										

Mouser Electronics

Authorized Distributor

Click to View Pricing, Inventory, Delivery & Lifecycle Information:

FCI:

91601-407LF