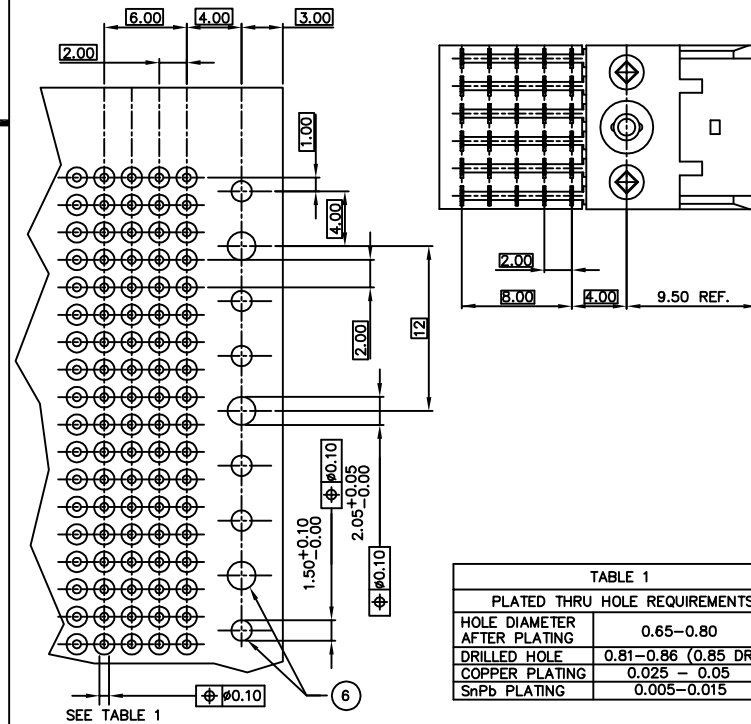
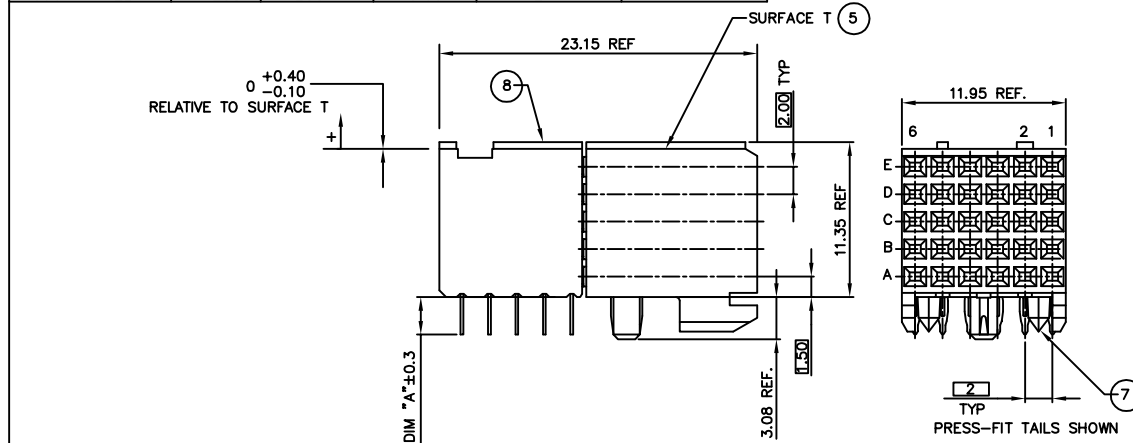




PRODUCT NUMBER	PEG TYPE	TAIL TYPE	TAIL LGTH. DIM "A"	PCB THICKNESS±0.20	LOADING CONFIGURATION
89047-X02	PRESS	PRESS-FIT	2.90	1.6	FULLY LOADED
89047-X12	PRESS	PRESS-FIT	3.53	2.4	
89047-X02LF	PRESS	PRESS-FIT	2.90	1.6	
89047-X12LF	PRESS	PRESS-FIT	3.53	2.4	FULLY LOADED

PLATING CONTACT AREA:	
DASH NR:	PERFORMANCE LEVEL
-1YY/1YYLF	TELCORDIA CO
-2YY/2YYLF	CUSTOMER SPECIAL
-3YY/3YYLF	CUSTOMER SPECIAL



RECOMMENDED PC BOARD LAYOUT,
COMPONENT SIDE.
(SEE PRINT 58351 FOR ADDITIONAL PCB INFORMATION)

TABLE 1	
PLATED THRU HOLE REQUIREMENTS	
HOLE DIAMETER AFTER PLATING	0.65-0.80
DRILLED HOLE	0.81-0.86 (0.85 DRILL)
COPPER PLATING	0.025 - 0.05
SnPb PLATING	0.005-0.015

NOTES:

- CONNECTOR MATERIALS:
HOUSING: LCP, 30% GLASS FILLED, UL 94-V0 COMPLIANT
PRESS BLOCK: GLASS FILLED, HIGH TEMPERATURE RESIN UL 94-V0 COMPLIANT
TERMINAL: PHOSPHOR BRONZE ALLOY
- TAIL PLATING:
89047-XYX = 0.5-1.5µm Sn Pb
89047-XYXLF = 0.5-1.5µm Sn (LEAD FREE)
- PRODUCT SPECIFICATION:
GS-12-002
- APPLICATION SPECIFICATIONS:
BUS-20-061
GS-20-001
TA-941
- PRODUCT MARKING: (PART NUMBER & LOT CODE).
- INDICATED HOLES ARE UNPLATED.
- DIAMOND LOCATION PEG ARE ONLY EXISTED ON THE BOTH SIDES OF PRODUCT.
- TOP SURFACE OF PRESS BLOCK MAY EXTEND UP TO 0.4MM HIGHER THAN HOUSING. THIS MAY AFFECT THE TAIL LENGTH BEFORE APPLICATION TO A BOARD.
- THESE PRODUCTS WHERE THE PART NUMBER ENDS IN "LF" MEET THE EUROPEAN UNION DIRECTIVES AND OTHER COUNTRY REGULATIONS AS DESCRIBED IN GS-22-008.
ALL PRODUCTS WILL WITHSTAND EXPOSURE TO 240°C FOR 60 SECONDS IN A CONVECTION, INFRARED OR VAPOR PHASE REFLOW OVEN.
- FOR LEAD FREE PART NUMBERS ADD "LF" SUFFIX. EXAMPLE: 89047-XYXLF.

mat'l. code				tolerances unless otherwise specified		CUSTOMER COPY		FCI	
NOTE 1				0.X±0.3		projection		www.fciconnect.com	
ltr	ecn no	dr	date	linear	0.XX±0.13	MM		title	
S	DG06-0445	Cenh	10/30/06	angles	0.XXX±0.51				
T	DG07-0171	Cenh	05/25/07			1:1		B SERIES R/A SIGNAL RECEPT ASSY, 5 ROW, 1 MOD, PF	
U	DG08-0171	TER	7/7/08						
V	DG09-0068	Cenh	06/06/09	dr	C. DAILY 06/18/02	scale		product family METRAL	
W	DG11-0061	Cenh	2011/03/03	engr	M. GRAY 06/18/02				
-	-	-	-	chr	M. GRAY 06/18/02	A		size dwg no	
R	V05-0874	DAI	09/13/05	appd	M. GRAY 06/18/02				
sheet	revision	W				89047		code	
index	sheet	1							

cage code
22526