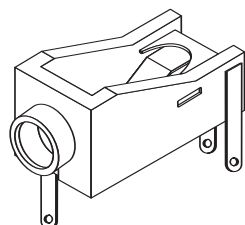


# Phone Jacks

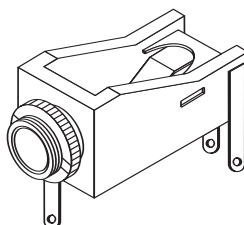
161-3400, 161-3412

KOBI CONN

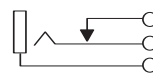
Phone Jacks



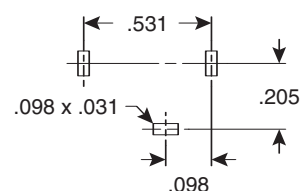
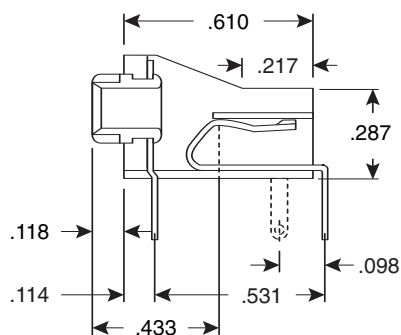
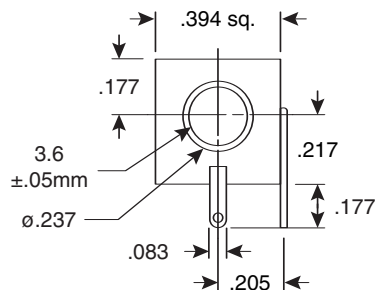
161-3412



161-3400



Circuit Diagram



PCB Hole Layout

## Dimensions: In.

Tolerance:  $\pm .012$ " (.3mm)  
(except where noted)

## SPECIFICATIONS

Type:	3.5mm mono jack with switch
Contact resistance:	20m $\Omega$ max.
Insulation resistance:	100M $\Omega$ min. @ 250VDC
Breakdown voltage:	500VAC for 1 minute
Knurled nut:	$\phi 6$ x .5mm (on 161-3400 only)

Date Last Revised: 4-5-05

Available from Mouser Electronics  
1-800-346-6873  
www.mouser.com

KC-300426

161-3400, 161-3412

# Mouser Electronics

Authorized Distributor

Click to View Pricing, Inventory, Delivery & Lifecycle Information:

[Kobiconn:](#)

[161-3412](#) [161-3400](#)