

Power Xpert® Gateway 200E



Delivers real-time, Web-enabled monitoring of electrical distribution and control equipment

Product snapshot

The Power Xpert Gateway 200E (PXG 200E) is designed to provide a Web-enabled gateway to serially communicating energy meters via a standard Web browser. The PXG 200E supports revenue grade single and multipoint energy meters via Modbus RTU and INCOM. Operates as a cost-effective hardware solution for better energy management, i.e.; no software required, can export data for use in other new or existing monitoring systems.

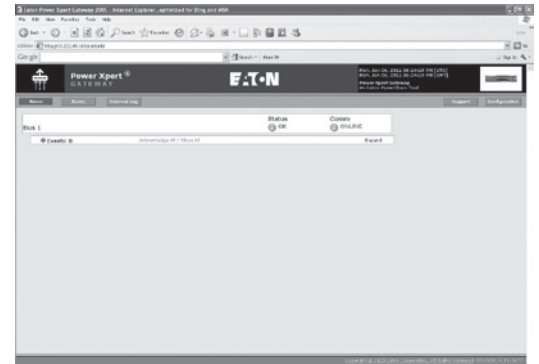
Product overview

The PXG 200E allows you to:

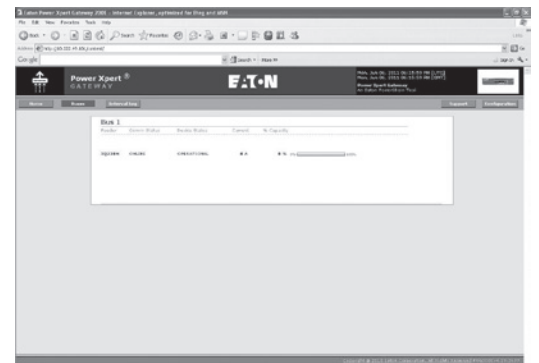
- Monitor energy usage patterns and reveal opportunities for efficiency improvements
- Remotely monitor real-time conditions and profile 5-minute interval trend logs, and export data in csv format
- Allocate energy costs to departments or processes
- Reduce peak demand surcharges
- Reduce power factor penalties
- Identify billing discrepancies
- Allows user to daisy-chain multiple Ethernet compatible downstream devices via RJ-45 port (see Page 5, Figure 5)
- Connect to downstream devices via a Web browser, Modbus master, SNMP or BACnet/IP clients separately or concurrently

In Firmware version 5.08 the ability to upload EDS files was introduced in the PXG200E. Please contact the CST (Technical Support) to obtain the standard supported EDS files for the other PXG-E models (400E, 600E, 800E). As standard the PXG200E supports a reduced list of devices.

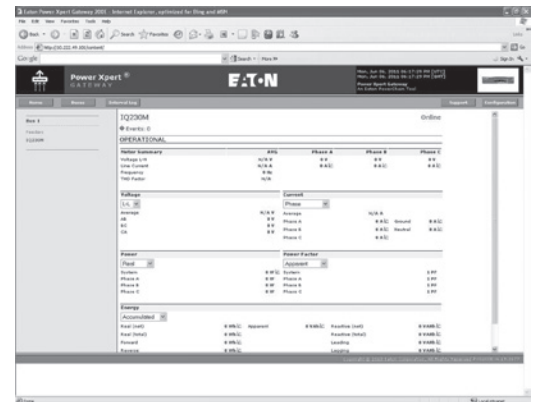
Power Xpert Gateway Screenshots



Home Page



Bus Page



Device Page



Powering Business Worldwide

PXG 200E Features

| Features | PXG 200E |
|---|----------|
| Total number of supported devices | 64 |
| Maximum number of INCOM devices supported | 64 |
| Maximum number of Modbus devices supported | 32 |
| Protocols supported on downstream devices: (INCOM and Modbus RTU) | Yes |
| Number of downstream communication ports | 2 |
| Number of downstream protocols supported simultaneously | 2 |
| USB port for configuration | Yes |
| Two RJ-45 Ethernet ports—10/100Base-T | Yes |
| Modbus TCP/IP protocols supported | Yes |
| SNMP client access v.1 and v.3 | Yes |
| BACnet/IP | Yes |
| INCOM slave action commands supported | Yes |
| INCOM date and time settings supported | Yes |
| Modbus write commands supported from Modbus master | Yes |
| Device summary screens per main, bus and device | Yes |
| Event notification via the Web interface | Yes |
| Secure Ethernet communications—SSL encryption | Yes |
| Secure communication ports via access control/trusted host list | Yes |
| IPv4 & IPv6 support | Yes |
| Save and restore configuration file | Yes |
| Interval logging—csv file format, downloadable to Excel | Yes |
| Ability to upload additional or modified EDS files | No |
| Device waveform access and storage—COMTRADE file format | No |
| Set user-defined events | No |
| Trend graph displayed | Yes |
| Data logging—csv file format, downloadable to Excel | No |
| Event logging—csv file format, downloadable to Excel | No |
| E-mail notification on events and threshold alarms | No |
| Custom summary Web page creation | No |
| Ability to create custom events | No |

The Eaton Power Xpert Gateway 200E Includes:

- The Power Xpert Gateway module
- Mounting provisions and required hardware for panel and DIN rail mounting

CD-ROM: contains the user manual, Modbus register maps, USB driver and other associated files

Enclosed Version

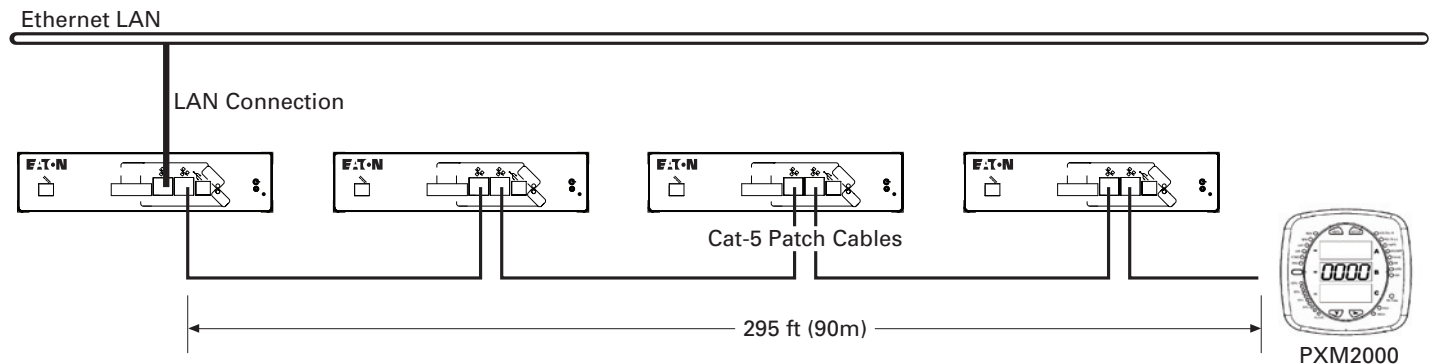
- Cost effective solution to add communications to new or existing equipment that has no physical space to install the PXG-E in the equipment structure
- NEMA 12 Enclosure rating
- Prewired with a ELC-PS02 power supply and Terminal Blocks for ease of wiring of incoming power and connected devices

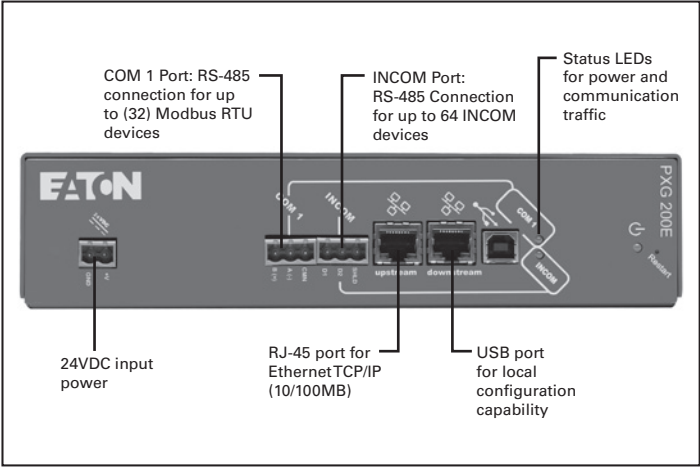
PXG-E Daisy Chain Application

The PXG-E allows for units to be connected together through two RJ-45 10/100 connectors on the front of the PXG-E series of products. This arrangement is a pass-through of Ethernet communications allowing a single network drop to connect up to five Ethernet communicating devices. The maximum length of a copper cable run should not exceed 295 ft (90m) total.

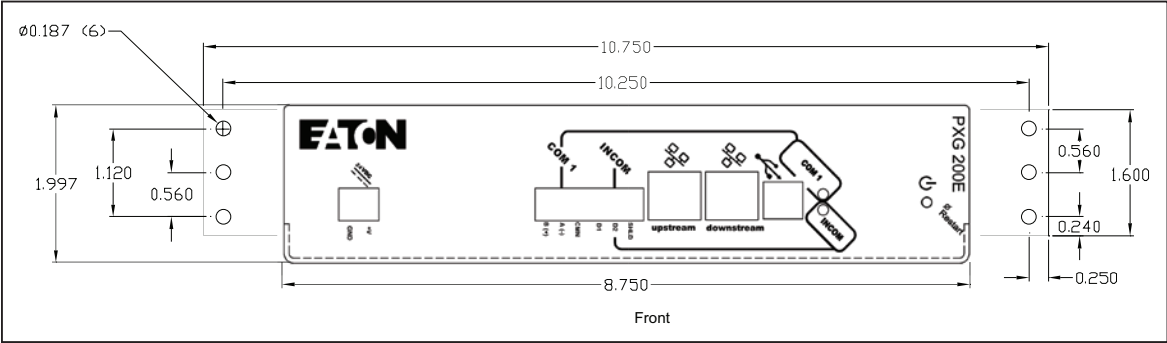
Note: In this configuration, if any of the PXG-E units go offline or lose power, the communication to the downstream Ethernet devices will lose connection to the LAN.

PXG-E Daisy Chain Application

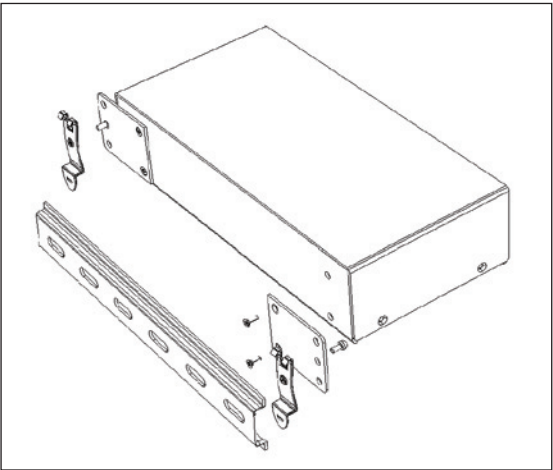




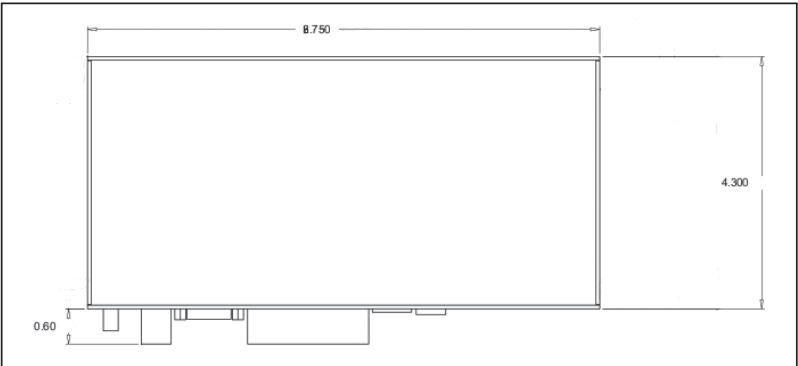
Power Xpert Gateway 200E with port descriptions



Power Xpert Gateway 200E with Standard Panel Mounting (Brackets Included)

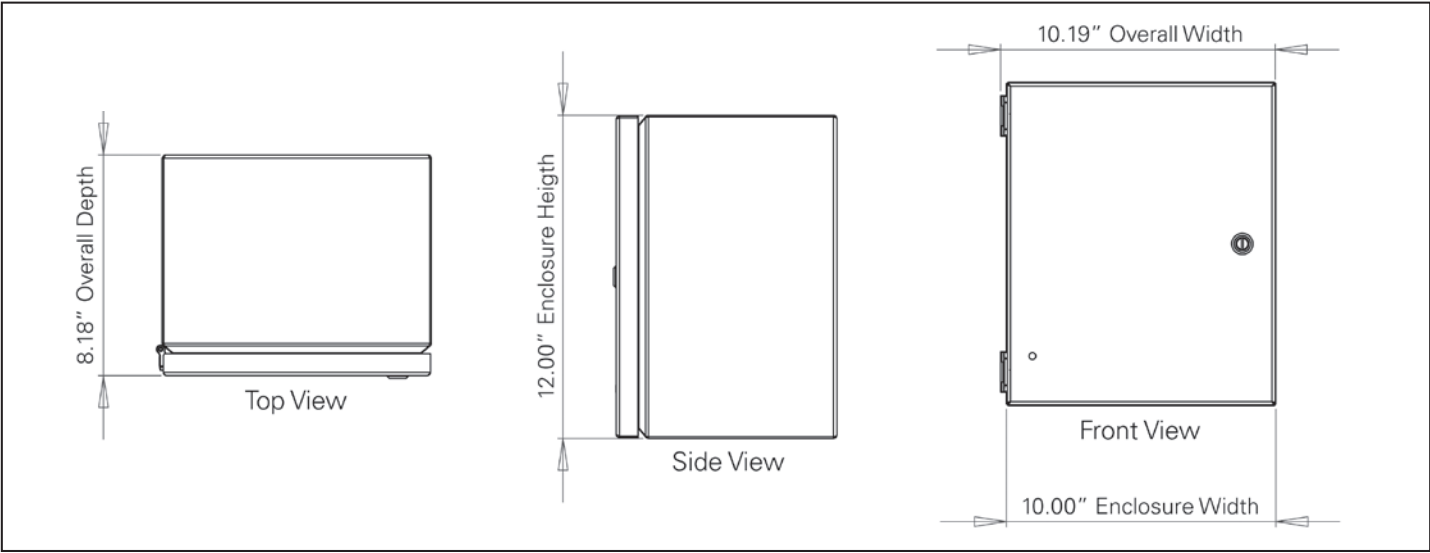
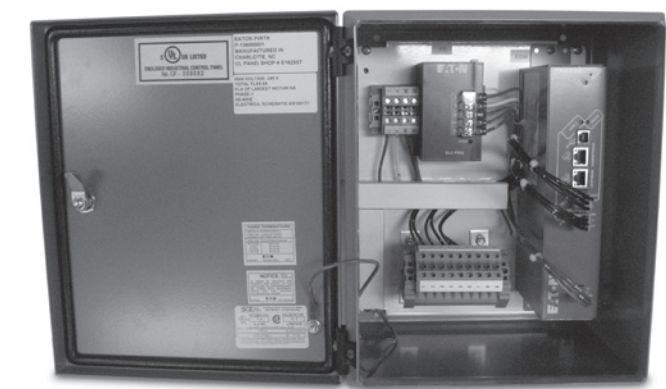


Power Xpert Gateway with DIN Rail Mounting (Brackets Included)



Power Xpert Gateway 200E dimensions

Power Xpert Gateway Enclosed Version



Device parameters displayed via the PXG Web UI

The table below represents many of the parameters displayed on the Web UI page for a given device; however it is not exhaustive. For the complete list of parameters displayed, per device, refer to the Device Data Map file at www.eaton.com/pxg.

[illegible]

Data acquisition and integration table for supported devices

Supported Devices

| Protocol | Device Type | Device Name | HTTP (Web Browser) | Web Services (Power Xpert Software) | Modbus TCP (BMS & SCADA) | Pass-through INCOM (PowerNet) | Pass-through QCPort (CHStudio) | SNMP (NMS) | SMTP (Email Client) | File Export (CSV file format) | File Export (COMTRADE file format) | BA Cnet/IP |
|----------|-------------|-----------------------|--------------------|--|-----------------------------|----------------------------------|-----------------------------------|------------|---------------------|----------------------------------|---------------------------------------|------------|
| INCOM | I/O | DIM | • | • | • | • | | • | | • | | • |
| | Meter | IQ Energy Sentinel | • | • | • | • | | • | | • | | • |
| | Meter | IQ220 / IQ320 | • | • | • | • | | • | | • | | • |
| | Meter | IQ230 / IQ330 | • | • | • | • | | • | | • | | • |
| | Meter | IQ Power Sentinel | • | • | • | • | | • | | • | | • |
| | Meter | IQMESII | • | • | • | • | | • | | • | | • |
| | Protective | DigiTrip 1150/DT1150V | • | • | • | • | | • | | • | | • |
| | Protective | Digitrip OPTIM 1050 | • | • | • | • | | • | | • | | • |
| | I/O | DIM-KYZ | • | • | • | • | | • | | • | | • |
| | Meter | PM3 | • | • | • | • | | • | | • | | • |
| Modbus | Meter | IQ230M / IQ330M | • | • | • | | | • | | • | | • |
| | Meter | IQ250 | • | • | • | | | • | | • | | • |
| | Meter | IQ260 | • | • | • | | | • | | • | | • |
| | Meter | SQD PM710 | • | • | • | | | • | | • | | • |
| | Meter | SQD PM850 | • | • | • | | | • | | • | | • |
| | Meter | IQ130 | • | • | • | | | • | | • | | • |
| | Meter | IQ140 | • | • | • | | | • | | • | | • |
| | Meter | IQ150 | • | • | • | | | • | | • | | • |
| | Meter | Nexus 1262/1272 | • | • | • | | | • | | • | | • |
| | Meter | IQ35M | • | • | • | | | • | | • | | • |

Technical Data and Specifications

PXG 200E Part Numbers

| Description | Style number | Catalog number |
|--------------------------|----------------|----------------|
| Power Xpert Gateway 200E | 103008420-5591 | PXG200E |
| Power supply—24 Vdc | ELC-PS02 | ELC-PS02 |
| Mounting bracket kit | 66B2146G01 | PXGACC01 |
| Enclosed model | P-136000001 | PXG200E-2A |

Memory

Flash: 1 GB
RAM: 128 MB

Communication ports

| | |
|-----------------------|---|
| Network port | two 10/100Base-T RJ-45 connector |
| Configuration port | one USB port |
| Serial ports PXG 200E | One RS-485 port for connection to INCOM devices One RS-485 port for connection to Modbus RTU devices |

Network protocols supported

| | |
|---------------|---|
| Modbus TCP/IP | supports data access from Modbus TCP clients |
| Web server | supports data access from Web browsers (HTTP and HTTPS) |
| DHCP | supports automatic IP address assignments, if enabled |
| SNMP | supports common network management tools |
| NTP | supports time synchronization via a network time server for PXG synchronization |
| SMTP | supports mail server for e-mail notification |
| BACnet/IP | supports data access from BACnet/IP clients |

Serial protocols supported

INCOM
Modbus RTU

Supported devices

Refer to www.eaton.com/pwg for most current list. Call for information on additional devices.

Web browsers recommended

IE 6.0 or higher
Mozilla Firefox 2.0 or higher
Google Chrome: Future

Number of devices supported

64 total with INCOM Port + COM 1 port not to exceed 64.
Port limitations are as follows:

- INCOM port: up to 64 INCOM devices
- COM 1 port: up to 32 Modbus devices

Power input

| | |
|------------------------|--------------|
| Input voltage, nominal | 24 Vdc; 0.8A |
| Input voltage range | ±20% Nominal |

Power consumption

8 watts maximum

Operating temperature

32° to 140°F (0° to 60°C)

Ambient storage temperature

–40° to 185°F (–40° to 85°C)

Relative humidity

5 to 95% noncondensing at 50°C

Size (H x D x L) in inches (mm)

2.10 x 4.50 x 8.90 (53.3 x 114.3 x 226.1)

Weight

1.5 lbs

Regulatory and standards compliance

UL® 508, Standard for Programmable Controller Equipment
FCC, Class A, Part 15, Subpart B, Sections 15.107b and 15.109b
EN55022: 1994 Class A, Information Technology Equipment
EN 61000-6-2:2001 Electromagnetic Compatibility (EMC) Part 6-2: Immunity for Industrial Environments

Enclosed Version

| | |
|------------------------------------|--|
| Enclosure Rating | NEMA 12 |
| ELC-PS02 Power Supply | Power Input: 100-240VAC 50/60Hz Output Power: 24VDC (+/-3%) Output Current: 2A max. Environmental: Operating Temp. Range: 0-55° C Storage Temp. Range: -25-70° C Relative Humidity: 50-95% For additional information on the ELC-PS02 refer to IL05003007E. |
| Size (dimensions) HxDxW | 12"x8.18"x10.19" |
| Weight | 16 lbs. |
| Regulatory and Standard Compliance | UL Panel Shop #: E182557 cULus listed |

Note: Features and specifications listed in this document are subject to change without notice and represent the maximum capabilities of the product with all options installed. Although every attempt has been made to ensure the accuracy of information contained within, Eaton makes no representation about the completeness, correctness or accuracy and assumes no responsibility for any errors or omissions. Features and functionality may vary depending on selected options.

Eaton Corporation
Electrical Sector
1000 Cherrington Parkway
Moon Township, PA 15108
United States
877-ETN-CARE (877-386-2273)
Eaton.com/pxg

© 2013 Eaton Corporation
All Rights Reserved
Printed in USA
Publication No. TD02603010E / TN
May 2013



Eaton and Power Xpert are registered trademarks of Eaton Corporation.

All other trademarks are property of their respective owners.

Note: Features and specifications listed in this document are subject to change without notice and represent the maximum capabilities of the product with all options installed. Although every attempt has been made to ensure the accuracy of information contained within, Eaton makes no representation about the completeness, correctness or accuracy and assumes no responsibility for any errors or omissions. Features and functionality may vary depending on selected options.