

PRODUCT NUMBER
91269-XXXXLF

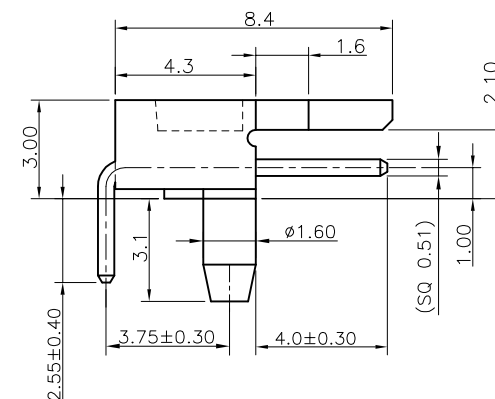
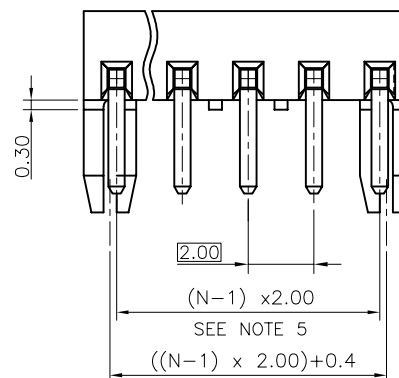
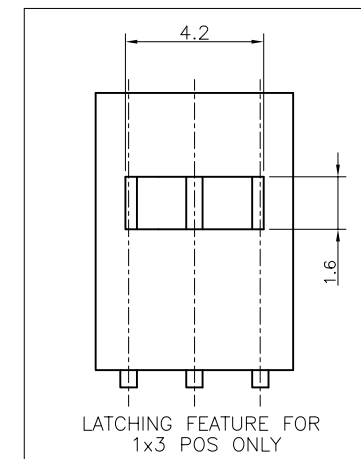
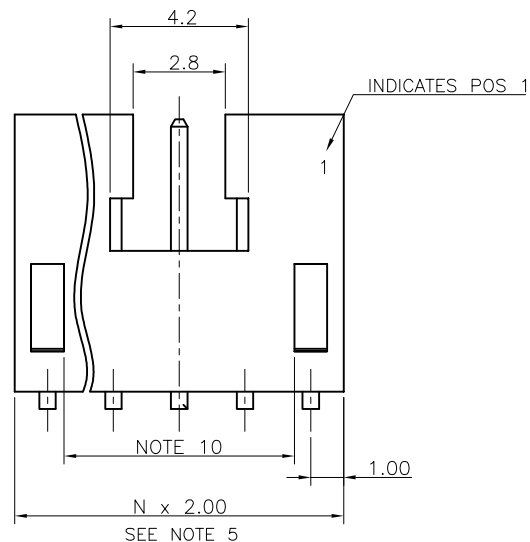
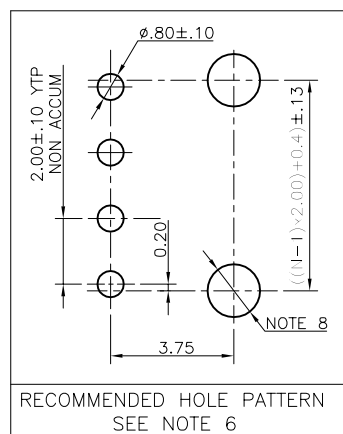
PLATING



INDICATES THE PRODUCT IS RoHS
COMPATIBLE, SEE NOTE 6
PACKAGING TYPE, NOTE 3
TOTAL NB OF POSITIONS, 3 TO 17

- 0 = 0.20µm GOLD/GXT ON CONTACT AREA
2.0µm MIN MATTE TIN ON TAILS
- 1 = 0.76µm GOLD/GXT ON CONTACT AREA
2.0µm MIN MATTE TIN ON TAILS
- 3 = 0.38µm GOLD/GXT ON CONTACT AREA
2.0µm MIN MATTE TIN ON TAILS
- UNDERPLATING 1.27µm Ni MIN
- T = FULL MATTE TIN 2µm-5µm
UNDERPLATING 1.27µm Ni MIN

NOTES:

- 1 - HOUSING MAT'L : HIGH TEMPERATURE
THERMOPLASTIC. UL94V-0 COLOR: CREAM
- 2 - PIN MATERIAL : COPPER ALLOY
- 3 - PACKAGING
= POLYBAGS
TR = TAPE & REEL (SEE TA845 FOR PRODUCT AVAILABILITY)
- 4 - 7N MIN RETENTION IN EITHER DIRECTION
- 5 - TO DETERMINE DIMENSIONS :
N = NUMBER OF POSITIONS
EXAMPLE : 8 POS N x 2.0 = 16.0mm
- 6 - RoHS COMPATIBLE PRODUCT SPECIFICATIONS
 - a - MANUFACTURING PROCESS COMPATIBILITY
- THE HOUSING WILL WITHSTAND EXPOSURE TO
260°C ±5°C SOLDER BATH TEMPERATURE FOR
5 SECONDS IN A WAVE SOLDER APPLICATION
WITH A 1.6mm MIN THICK CIRCUIT BOARD.
 - b - LABELLING:
- MEETS PACKAGING SPECS AS PER GS-14-920
 - c - THIS PRODUCT MEETS EUROPEAN DIRECTIVES
AND OTHER COUNTRY REGULATIONS AS DISCRIBED
IN GS-47-0004
- 7 - HOLE DIMENSION TO BE $\phi 1.6 \pm 0.03$ FOR
INTERFERENCE FIT APPLICATIONS.
HOLE DIMENSIONS TO BE $\phi 1.95 \pm 0.05$ FOR
LOCATION APPLICATION WITH AUTOMATIC
PICK AND PLACE MACHINES.
- 9 - RECOMMENDED IR PROFILE PER TA842.
- 10 - ODD NBR OF POS : 7.00mm
EVEN NBR OF POS : 5.00mm



mat'l. code SEE TABLE				surface ISO 1302 ✓		tolerance ISO 406 ISO		projection 101 		product family MINITEK																																																																																																																																																																																																																																																																																																																																																																																																																																																																																																																																																																																																																																																																																																																																																																																																																																																																																																																																																																																																																																																																																																																																																																																																																																																																																																																																																																																																																					
ltr	ecn no	dr	date	tolerances unless otherwise specified				 mm	title																																																																																																																																																																																																																																																																																																																																																																																																																																																																																																																																																																																																																																																																																																																																																																																																																																																																																																																																																																																																																																																																																																																																																																																																																																																																																																																																																																																																																						
L	B-16822	JCO	14.01.23	angles	linear	.X ±0.3			MINITEK,TMT,SR RA, POL & LATCHING																																																																																																																																																																																																																																																																																																																																																																																																																																																																																																																																																																																																																																																																																																																																																																																																																																																																																																																																																																																																																																																																																																																																																																																																																																																																																																																																																																																																																						
						.XX ±0.13																																																																																																																																																																																																																																																																																																																																																																																																																																																																																																																																																																																																																																																																																																																																																																																																																																																																																																																																																																																																																																																																																																																																																																																																																																																																																																																																																																																																																									
F	F03067	LMU	03.18.03	±2'		.XXX ±0.05		scale 5:1	dwg no sheet 1 of 1 size 91269 A3																																																																																																																																																																																																																																																																																																																																																																																																																																																																																																																																																																																																																																																																																																																																																																																																																																																																																																																																																																																																																																																																																																																																																																																																																																																																																																																																																																																																																						
G	F05-0128	LMU	05.02.21	dr	J. FABRE	13.01.07																																																																																																																																																																																																																																																																																																																																																																																																																																																																																																																																																																																																																																																																																																																																																																																																																																																																																																																																																																																																																																																																																																																																																																																																																																																																																																																																																																																																																									
H	F06-0210	LMU	06.07.04	engr	J. FABRE	13.01.07																																																																																																																																																																																																																																																																																																																																																																																																																																																																																																																																																																																																																																																																																																																																																																																																																																																																																																																																																																																																																																																																																																																																																																																																																																																																																																																																																																																																																									
J	F08-0145	ELA	17.04.08	chr	P.NIZZI	13.01.07																																																																																																																																																																																																																																																																																																																																																																																																																																																																																																																																																																																																																																																																																																																																																																																																																																																																																																																																																																																																																																																																																																																																																																																																																																																																																																																																																																																																																									
K	B-16048	JCO	13.10.14	appd	JM.C	13.01.07																																																																																																																																																																																																																																																																																																																																																																																																																																																																																																																																																																																																																																																																																																																																																																																																																																																																																																																																																																																																																																																																																																																																																																																																																																																																																																																																																																																																																									
sheet index		revision sheet																																																																																																																																																																																																																																																																																																																																																																																																																																																																																																																																																																																																																																																																																																																																																																																																																																																																																																																																																																																																																																																																																																																																																																																																																																																																																																																																																																																																																													

Mouser Electronics

Authorized Distributor

Click to View Pricing, Inventory, Delivery & Lifecycle Information:

FCI:

91269-104