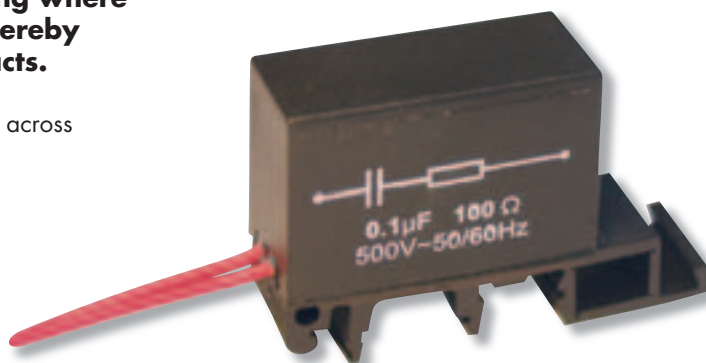


FPO05 - SINGLE PHASE

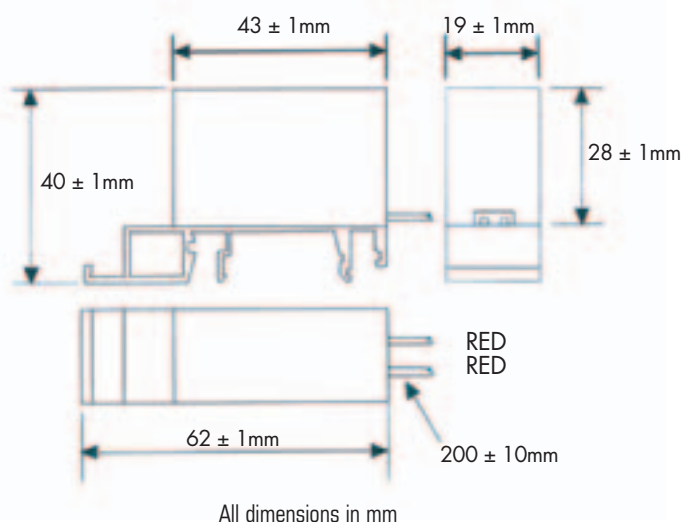
These resistor capacitor suppressors are designed to reduce contact arcing where inductive loads are involved, thereby increasing the life of their contacts.

They may also be used for reducing dv/dt across thyristors or other solid state devices.



Characteristics

Capacitance	0.01-0.1µF
Capacitance Tolerance	±10 and 20%
Resistors	47-470 ohm ±5% 3.5 watt
Operating Voltage	500 V RMS (MAX)
Supply Frequency	50/60Hz
Operating Temperature	-40°C to +70°C
Insulation Resistance	100 MΩ (500V)



All dimensions in mm

Circuit Diagram



DIN Rail Mounting:
Top Hat
(EN50022, DIN46277-3 BS5584)

G. Profile
(EN50035, DIN46277-1 BS5825)

Other capacitance and resistance values, case shapes and terminations are available.

FPO06 - THREE PHASE



These resistor capacitor suppressors are designed to reduce contact arcing where inductive loads are involved, thereby increasing the life of their contacts.

The unit is designed for power applications with delta connections, for 3-phase uses, and displays a high degree of reliability in various types of high voltage equipment.

Circuit Diagram DELTA Construction



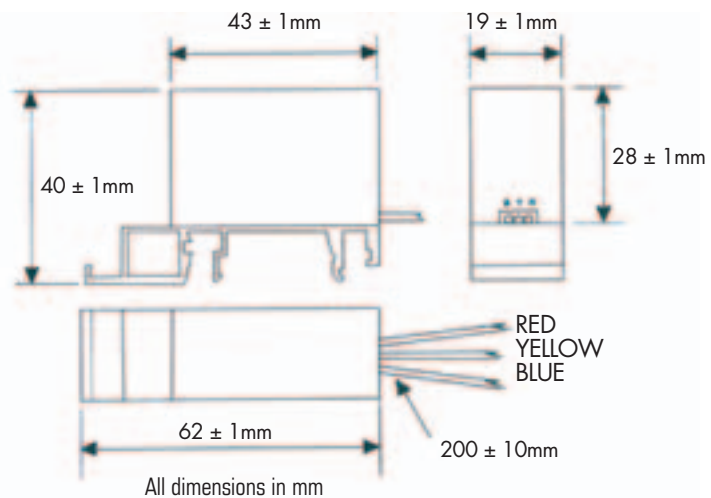
DIN Rail Mounting:
Top Hat
(EN50022, DIN46277-3 BS5584)

G. Profile
(EN50035, DIN46277-1 BS5825)

Other capacitance and resistance values, case shapes and terminations are available.

Characteristics

Capacitance	0.01-0.1μF x 3
Capacitance Tolerance	±10 and 20%
Resistors	47-470 ohm ±5% 3.5 watt x 3
Operating Voltage	500 V RMS (MAX)
Supply Frequency	50/60Hz
Operating Temperature	-40°C to +70°C
Insulation Resistance	100 MΩ (500V)



FPO12 - SINGLE PHASE

These capacitor suppressors are designed to reduce contact arcing where inductive loads are involved, thereby increasing the life of their contacts.

They may also be used for reducing dv/dt across Thyristors or other solid state devices.

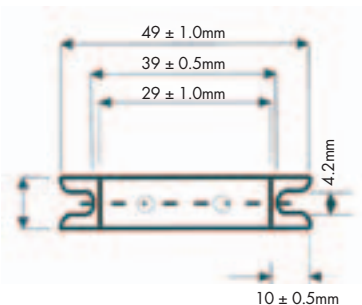


Characteristics

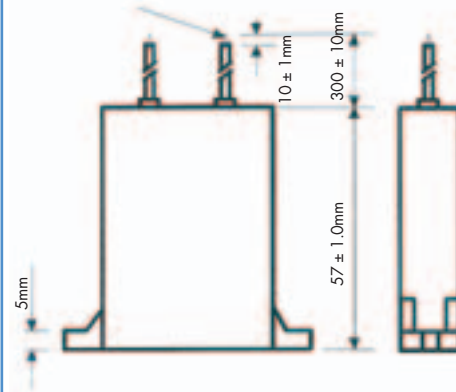
Capacitance	0.01-0.33 μ F
Capacitance Tolerance	± 10 and 20%
Resistors	47-470 ohm $\pm 30\%$ 6 watt
Operating Voltage	500 V RMS (MAX)
Supply Frequency	50/60Hz
Operating Temperature	-40°C to +70°C
Insulation Resistance	100 M Ω (500V)

Peak Pulse Conditions

Peak to Peak Voltage	1500V (MAX)
Repetition Frequency	750Hz (MAX)



17.5 \pm 0.5mm centres



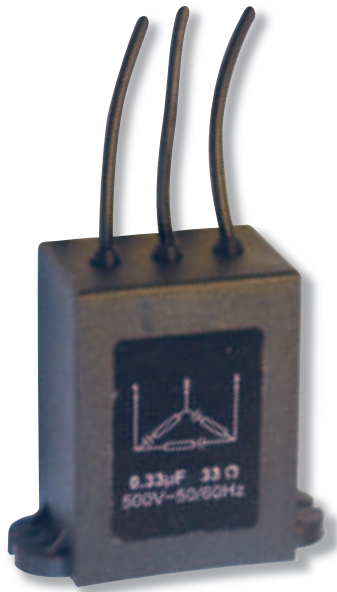
All dimensions in mm

Other capacitance and resistance values, case shapes and terminations are available.

CIRCUIT DIAGRAM

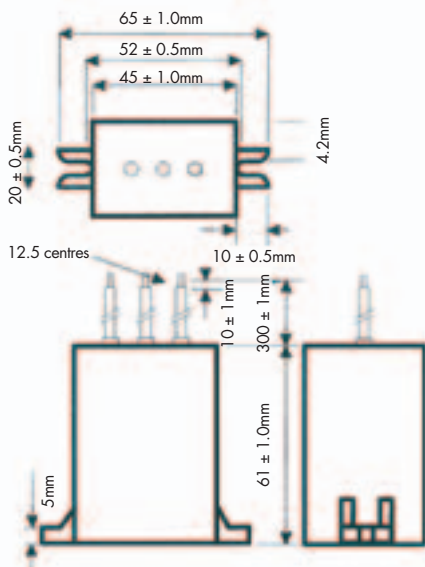


FPO13 - THREE PHASE



These capacitor suppressors are designed to reduce contact arcing where inductive loads are involved, thereby increasing the life of their contacts.

They may also be used for reducing dv/dt across Thyristors or other solid state devices.



All dimensions in mm

Other capacitance and resistance values, case shapes and terminations are available.

Characteristics

Capacitance	0.01-0.33 μ F x 3
Capacitance Tolerance	± 10 and 20%
Resistors	47-470 ohm $\pm 30\%$ 6 watt x 3
Operating Voltage	500 V RMS (MAX)
Supply Frequency	50/60Hz
Operating Temperature	-40°C to +70°C
Insulation Resistance	100 M Ω (500V)

Peak Pulse Conditions

Peak to Peak Voltage	1500V (MAX)
Repetition Frequency	750Hz (MAX)

