

Series 800 "Mighty Mouse" Connector
800-014 Cordsets
Overmolded - Environmental

800-014
Cordsets
Overmolded - Environmental

PRODUCT FACTS

- Rugged Neoprene Jacketing
- 360° Shielding
- Straight & Right Angle Configurations
- Waterproof
- High Temperature
- Flexible Overmolded Construction

RELATED INFORMATION

Materials and Finishes	4-5
Performance Specifications	6-9
Contact Arrangements	10
Application Tooling	A-1
Hardware and Accessories	F-1

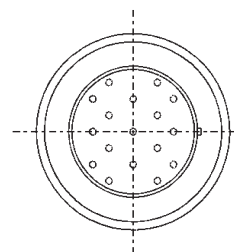
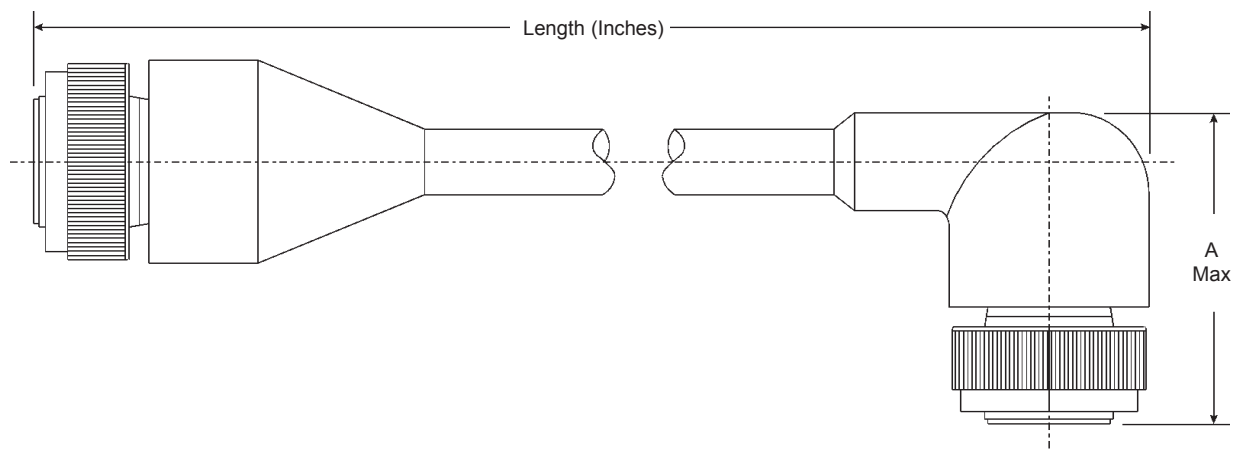
HOW TO ORDER

Connector Series	Connector Style End A	Connector Style End B	Class	Shell Size-Insert Arrangement	Key Position	Cable Type	Wire Gauge	Cable Exit	Overall Length	
800-014	A - Plug, Hex Coupling Nut, Pin Contacts	A - Plug, Hex Coupling Nut, Pin Contacts	M - Aluminum Shell, Electroless Nickel Finish	6-4	N Normal	N - Neoprene Jacket, M22759/11-*9	2 - #22 AWG	A - Straight Cable Exit End A and B	Overall Length in Inches (min.)	
	B - Plug, Hex Coupling Nut, Socket Contacts	B - Plug, Hex Coupling Nut, Socket Contacts	NF - Aluminum Shell, Olive Drab Cadmium Over Electroless Nickel Finish	6-7	X Position X	Primaries, Polyurethane Overmolded, No Shield	4 - #24 AWG	B - Right Angle Exit End A and B		
	C - Receptacle, In-Line, Pin Contacts	C -Receptacle, In-Line, Pin Contacts	C - Aluminum Shell, Black Anodize Finish	9-19	Y Position Y	S - Neoprene Jacket, M22759/11-*9	6 - #26 AWG	C - Straight Cable Exit End A, Right Angle Exit End B		
	D - Receptacle, In-Line, Socket Contacts	D - Receptacle, In-Line, Socket Contacts	ZN - Aluminum Shell, Zinc-Nickel Finish	12-37	Z Position Z	Primaries, Polyurethane Overmolded, Shielded	8 - #28 AWG	D - Right Angle Exit End A, and Straight Exit End B		
		N -No Connector Installed on End B	Z1 - Stainless Steel Shell, Passivated	14-55						
				15-85						
	Sample Part Number:									
	800-014	— A	A	M	6-7	N	N	4		—
										72

**Series 800 “Mighty Mouse” Connector
800-014 Cordsets
Overmolded - Environmental**



**Series 800
“Mighty
Mouse”**



DIMENSIONS	
Shell Size/ Insert Arrangements	A MAX
6-4, 6-7	1.200 (30.5)
9-19	1.400 (35.6)
12-37	1.500 (38.1)
14-55	1.650 (41.5)
15-85	1.750 (44.5)

Metric Dimensions (mm) are in parentheses.

Tired of waiting an eternity for a simple connector or accessory?



Then Glenair's "Same Day Delivery" program is the answer.

Tired of long lead times for connectors and accessories? Then consider over 30,000 different part numbers in stock, in quantity, and ready for immediate shipment - including virtually every Mil Spec accessory in the book. Consider as well

Glenair's "no minimum order" policy and our lightning fast turnaround on quotes for price and delivery. At Glenair, we're making unprecedented investments in inventory to keep current with your every need.



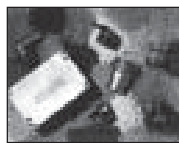
Commercial and Mil Spec
connector accessories



Convoluted tubing and
metal-core conduit



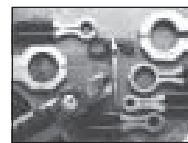
Electrical and fiber optic
cable assemblies



Composite thermoplastic
components



Microminiature connectors
and accessories



Backshell assembly and
termination tools



1211 Air Way
Glendale, California 91201-2497

Telephone: 818-247-6000 · Facsimile: 818-500-9912 · EMail: sales@glenair.com

United States · United Kingdom · Germany · Nordic · France · Italy

www.glenair.com