

DO NOT  
SCALE FROM  
THIS PRINT

DESIGNED & DIMENSIONED HDBNC-J-P-XX-ST-BH1  
IN MILLIMETERS[INCHES]

GENDER  
-J: JACK

TYPE  
-P: PCB

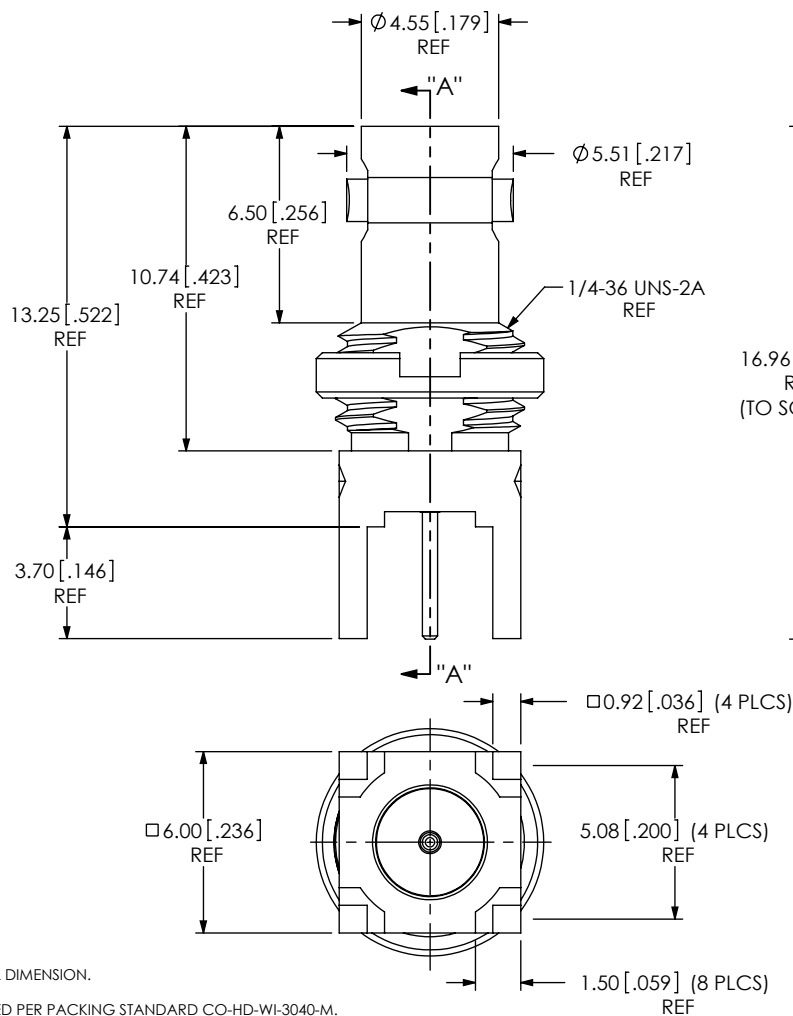
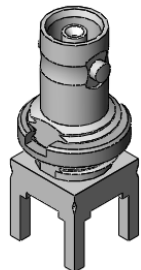
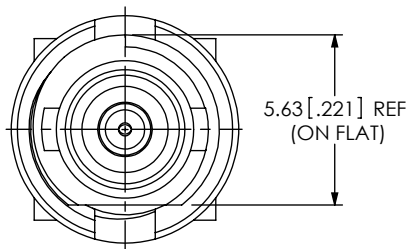
TERMINATION  
-BH: BULKHEAD THROUGH HOLE

ORIENTATION  
-ST: STRAIGHT

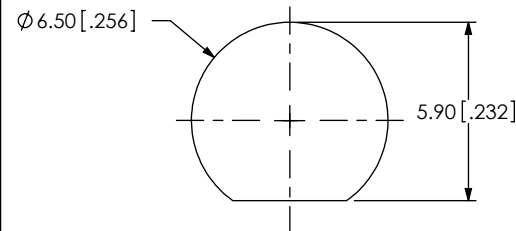
PLATING SPECIFICATION **A**

-HF: 30μ" GOLD CENTER CONTACT,  
3μ" GOLD OUTER CONTACT  
-HN: 30μ" GOLD CENTER CONTACT,  
100μ" NICKEL OUTER CONTACT  
-GF: 10μ" GOLD CENTER CONTACT,  
3μ" GOLD OUTER CONTACT  
-GN: 10μ" GOLD CENTER CONTACT,  
100μ" NICKEL OUTER CONTACT  
(SEE TABLE 1)

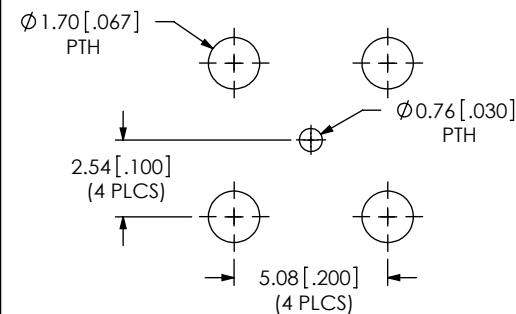
TABLE 1					
ITEM	COMPONENT	-HF	-HN	-GF	-GN
1	SUB ASSEMBLY	SUB-HDBNC-J-P-HF-ST-BH1	SUB-HDBNC-J-P-HN-ST-BH1	SUB-HDBNC-J-P-GF-ST-BH1	SUB-HDBNC-J-P-GN-ST-BH1
2	NUT	HDBNC-NUT-001-N			



RECOMMENDED MOUNTING HOLE  
2.20 [.079] MAX PANEL THICKNESS



RECOMMENDED PCB LAYOUT



NOTES:

1. REPRESENTS A CRITICAL DIMENSION.
2. NOTE DELETED.
3. PRODUCT TO BE PACKAGED PER PACKING STANDARD CO-HD-WI-3040-M.  
TRAY: TY-SMA001-1  
COVER: TY-SMA001-2
4. NUT TO BE PACKAGED SEPARATELY.

UNLESS OTHERWISE SPECIFIED,  
DIMENSIONS ARE IN MILLIMETERS.  
TOLERANCES ARE:  
DECIMALS ANGLES  
X.X: ±0.3 [.01] 5°  
X.XX: ±0.13 [.005]  
X.XXX: ±0.051 [.0020]

PROPRIETARY NOTE

THIS DOCUMENT CONTAINS INFORMATION  
CONFIDENTIAL AND PROPRIETARY TO  
SAMTEC, INC. AND SHALL NOT BE REPRODUCED  
OR TRANSFERRED TO OTHER DOCUMENTS OR  
DISCLOSED TO OTHERS OR USED FOR ANY  
PURPOSE OTHER THAN THAT WHICH IT WAS  
OBTAINED WITHOUT THE EXPRESSED WRITTEN  
CONSENT OF SAMTEC, INC.

MATERIAL: DO NOT SCALE DRAWING

SHEET SCALE: 4:1

SOCKET: BeCu  
SHELL, NUT: BRASS  
INSULATOR: PTFE

**samtec**

520 PARK EAST BLVD, NEW ALBANY, IN 47150  
PHONE: 812-944-6733 FAX: 812-948-5047  
e-Mail: info@SAMTEC.com code 55322

DESCRIPTION:  
HD BNC 75 OHM, ST JACK BULKHEAD

DWG. NO.  
**HDBNC-J-P-XX-ST-BH1**

BY: ALVIN W 02/11/2011 SHEET 1 OF 1