

BOX3-1455N (and BOX3-1455N-BK)



*A Hammond 1455N extruded aluminum enclosure with
11 slots for BPS size 3 (3U) prototyping boards.*



Part Numbers

BPS Part# BOX3-1455N (silver)

BPS Part# BOX3-1455N-BK (black)

Features

- Box is silver extruded aluminum with metal end plates and an ABS plastic bezel.
- Box Size 6.30 x 4.06 x 2.09 inches (160 x 103 x 53 mm).
- 11 built-in card guides for 3U sized PCBs (100 x 160mm).
- Side out top panel plate.
- Rugged body constructed from extruded aluminum with a minimum thickness of .06" (1.5 mm).

Details

The 1455N is an extruded aluminum enclosure for electronic projects. The enclosure is designed for BusBoard Prototype Systems size 3 (3U) prototype PCBs (100x160mm boards) which are standard Eurocard/VME size.

P.C. boards mount horizontally by sliding into 11 built-in card guide slots. Two aluminum end panels are provided with attractive plastic bezels to hide the seams. The screws are recessed flathead type to provide a flat surface. The silver aluminum is clear anodized for protection from the elements. The end panels and the top plate can be removed for easy drilling or cutting of holes. Screws and adhesive rubber feet are included.



BPS part# BOX3-1455N-BK

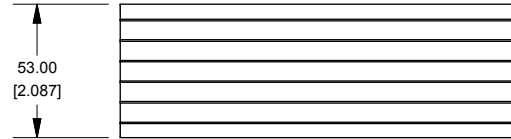
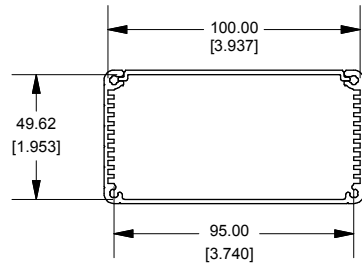
Fits BPS size 3 (3U) boards



1455N1601BK

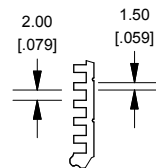


Extrusion

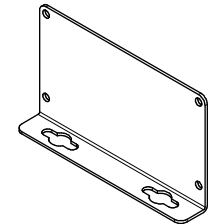
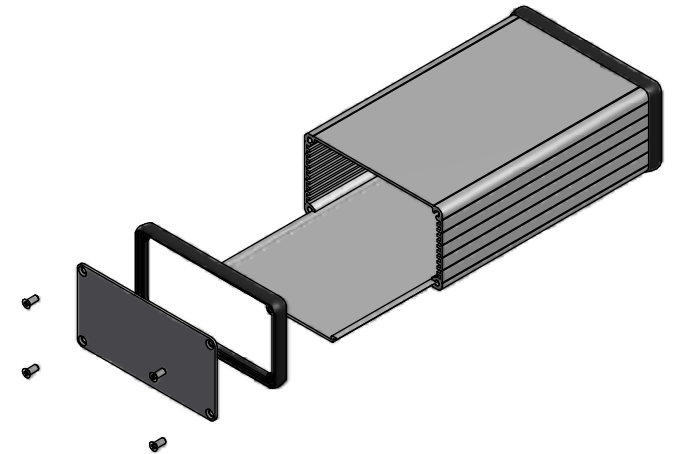
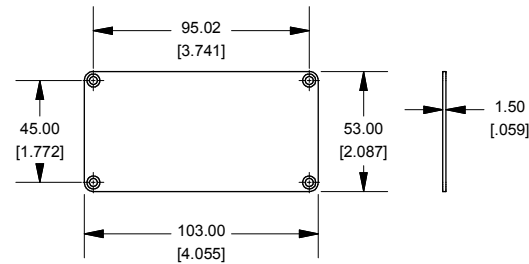


EXTRUSION DESIGNED FOR 100MM WIDE PC BOARD

Slot Details



End Plate



OPTIONAL FLANGE END PANELS 1455NF

Enclosures can be Factory Modified (Milling, Drilling, Printing etc.)
Solid models of this enclosure available in STEP or IGES.
Contact Factory mjm@hammondmfg.com

NOTE

Purchased assembly includes box, plastic bezels, end panels, #6
Taptight screws and self adhesive rubber feet.
Box made from Extruded Aluminum 6063.
Bezels made with polycarbonate.

1455N1601

PART NUMBERS

Clear Anodized	1455N1601
Black Anodized	1455N1601BK

ACCESSORIES

See website for accessories.



Open Bezel

