

Metal Furniture Locks

Specifying a product when ordering

**AFTER SELECTING THE PRODUCT YOU REQUIRE, PLEASE
ADD THE FOLLOWING:**

1. LOCK SPECIFICATIONSEE 12.10 FOR DETAILS

**2. CAM DETAILSSEE 12.30 AND PRODUCT
DATA SHEET FOR DETAILS**

3. KEYING DETAILSSEE 12.20 FOR DETAILS

**4. FIXING DETAILSSEE 12.20 AND PRODUCT
DATA SHEET FOR DETAILS**

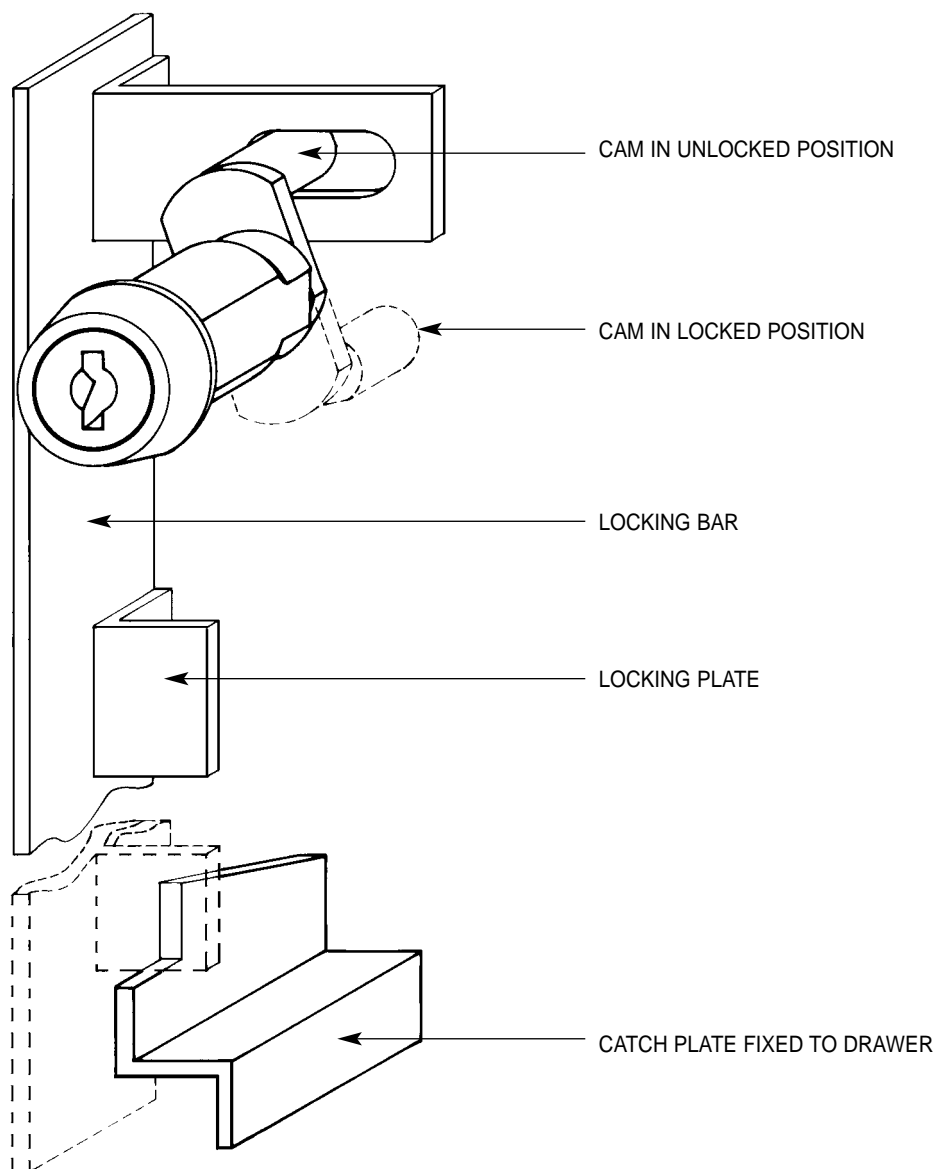
PLEASE CONTACT OUR SALES DEPARTMENT IF YOU REQUIRE HELP

LOWE & FLETCHER LTD

MOORCROFT DRIVE, WEDNESBURY, WEST MIDLANDS, ENGLAND WS10 7DE.

TELEPHONE: 0121 505 0400. FAX: 0121 505 0420. E-MAIL: sales@lowe-and-fletcher.co.uk WEB SITE: www.lowe-and-fletcher.co.uk

Fitting and Operating Instructions



The Lowe & Fletcher multi-drawer lock can be fitted in a few seconds and is used in conjunction with a simple locking bar (not supplied) which is fitted with pegs. By turning the key 180 degrees the roller cam on the back of the lock moves the bar downward and the pegs engage

in the spring steel catch plate fitted on the side of the drawer and thus prevent the drawer from being pulled out. In the open position the roller cam moves past top dead centre which prevents the bar from dropping and accidentally locking the cabinet.

LOWE & FLETCHER LTD

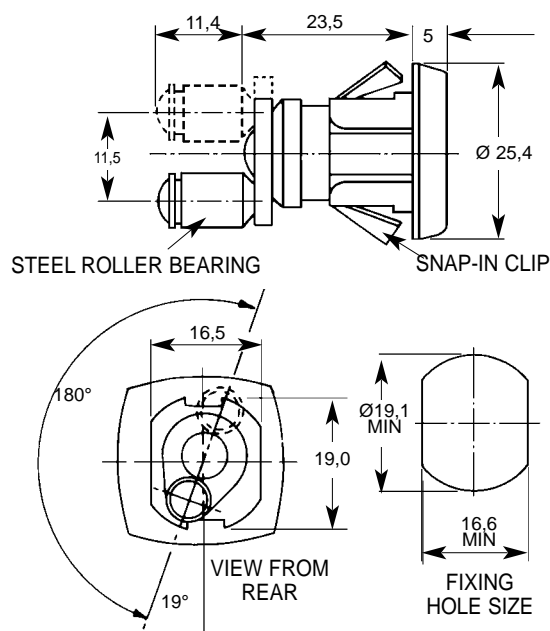
MOORCROFT DRIVE, WEDNESBURY, WEST MIDLANDS, ENGLAND WS10 7DE.

TELEPHONE: 0121 505 0400. FAX: 0121 505 0420. E-MAIL: sales@lowe-and-fletcher.co.uk WEB SITE: www.lowe-and-fletcher.co.uk

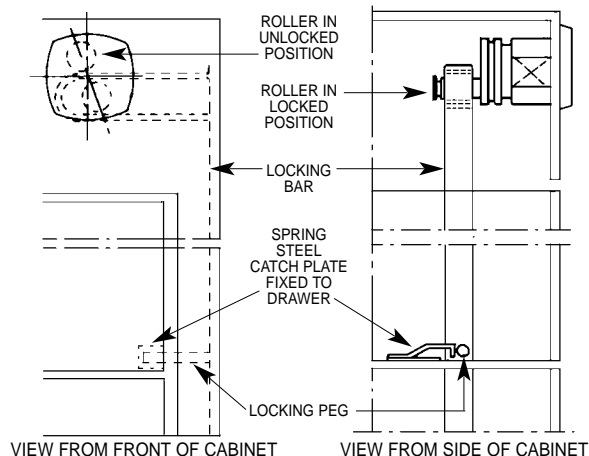
Multi-Drawer Lock

The Lowe & Fletcher multi-drawer lock can be fitted in a few seconds and is used in conjunction with a simple locking bar (not supplied) which is fitted with pegs. By turning the key 180 degrees the roller cam on the back of the lock moves the bar downward and the pegs engage in the spring steel catch plate fitted on the side of the drawer and thus prevent the drawer from being pulled out. In the open position the roller cam moves past top dead centre which prevents the bar from dropping and accidentally locking the cabinet.

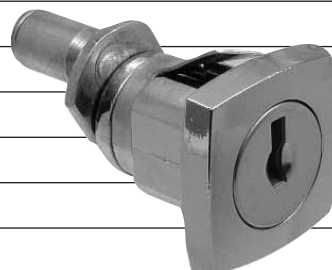
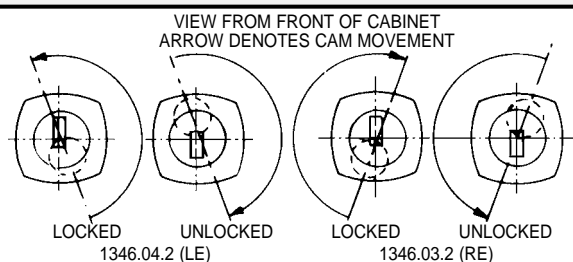
1346.04.2 GENERAL CONSTRUCTION OF LOCK



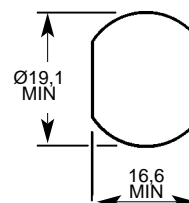
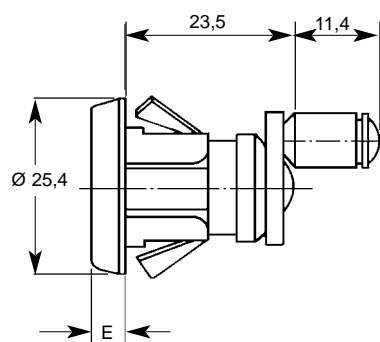
FITTING AND OPERATING INSTRUCTIONS



LOCKING MOVEMENTS



1346



FIXING HOLE SIZE

PRODUCT REFERENCE NUMBERS

KEY SERIES	COMBINATIONS	LOCK	CAM TRAVEL	"E"
92 M	200	1346	19.0mm	5.0mm
9000 M	500	F335	11.5mm	4.5mm
9000 M	500	F390	15.0mm	4.5mm
9000 M	500	F535	15.0mm	4.5mm

M = MASTER KEY SYSTEM: SUPPLIED TO ORDER ONLY

STANDARD MOVEMENTS: 3, 4

STANDARD FINISH: BRIGHT CHROME

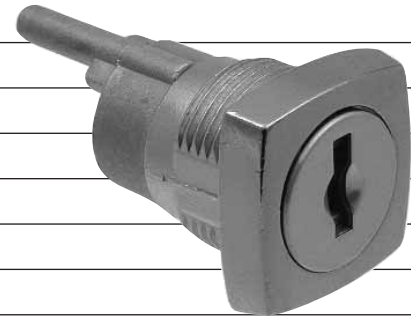
OTHER CAM TRAVEL, CAM AND/OR PANEL THICKNESS SUPPLIED TO ORDER ONLY

LOWE & FLETCHER LTD

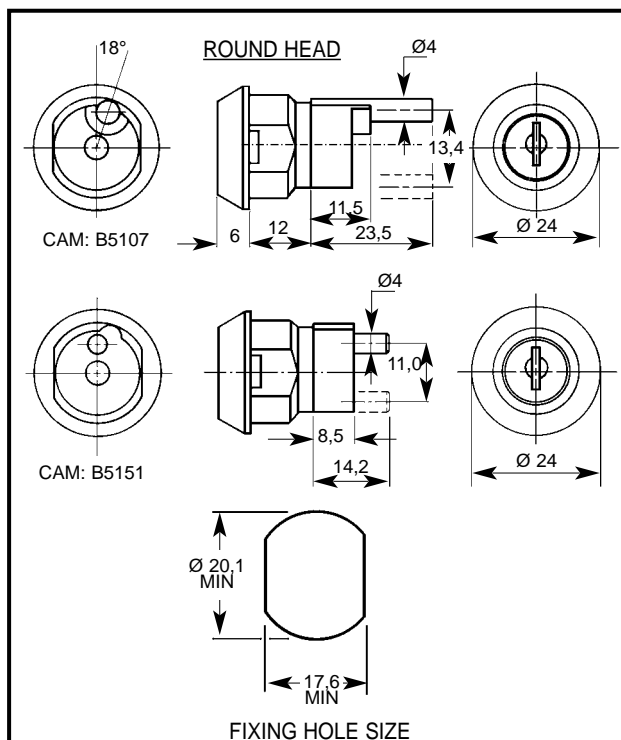
MOORCROFT DRIVE, WEDNESBURY, WEST MIDLANDS, ENGLAND WS10 7DE.

TELEPHONE: 0121 505 0400. FAX: 0121 505 0420. E-MAIL: sales@lowe-and-fletcher.co.uk WEB SITE: www.lowe-and-fletcher.co.uk


Multi-Drawer Lock 12mm and 13mm




4701



PRODUCT REFERENCE NUMBERS

KEY SERIES	COMBINATIONS	NUT FIXED HOUSING	HORSESHOE CLIP FIXING
93 E 	500	4701	4702

MAXIMUM PANEL THICKNESS: NUT FIXING 5mm, HORSESHOE CLIP FIXING 7mm ACROSS FLATS, 4mm ACROSS ROUNDS

 = **MASTER KEY SYSTEM:** SUPPLIED TO ORDER ONLY

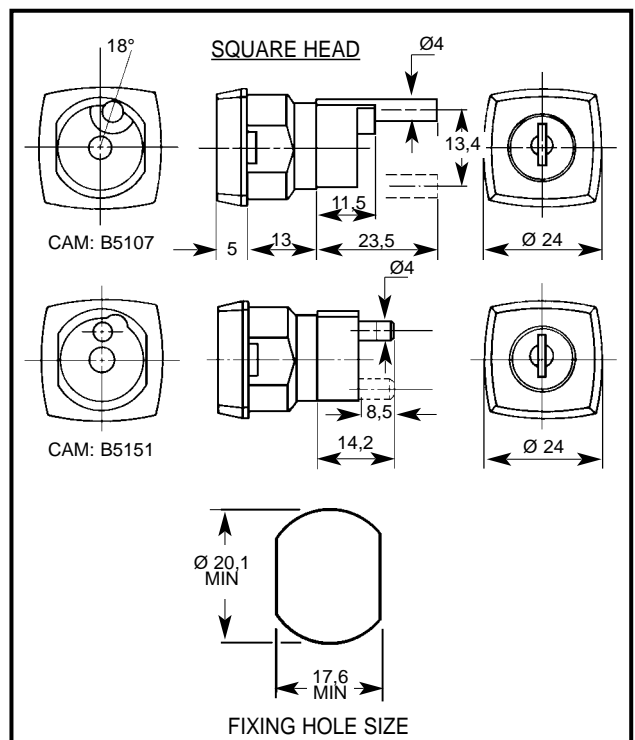
STANDARD MOVEMENTS: 3, 4

STANDARD FINISH: BRIGHT CHROME


PLEASE SPECIFY CAM REF.. NO. WHEN ORDERING.

CAM IS SPUN ON

4703



PRODUCT REFERENCE NUMBERS

KEY SERIES	COMBINATIONS	NUT FIXED HOUSING	HORSESHOE CLIP FIXING
93 E 	500	4703	4704

MAXIMUM PANEL THICKNESS: NUT FIXING 5mm, HORSESHOE CLIP FIXING 7mm ACROSS FLATS, 4mm ACROSS ROUNDS

 = **MASTER KEY SYSTEM:** SUPPLIED TO ORDER ONLY

STANDARD MOVEMENTS: 3, 4

STANDARD FINISH: BRIGHT CHROME

PLEASE SPECIFY CAM REF.. NO. WHEN ORDERING. CAM

IS SPUN ON

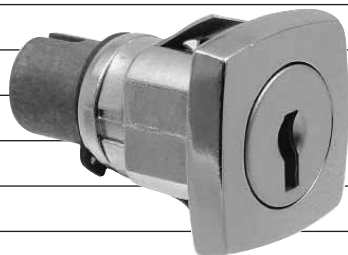
LOWE & FLETCHER LTD

MOORCROFT DRIVE, WEDNESBURY, WEST MIDLANDS, ENGLAND WS10 7DE.

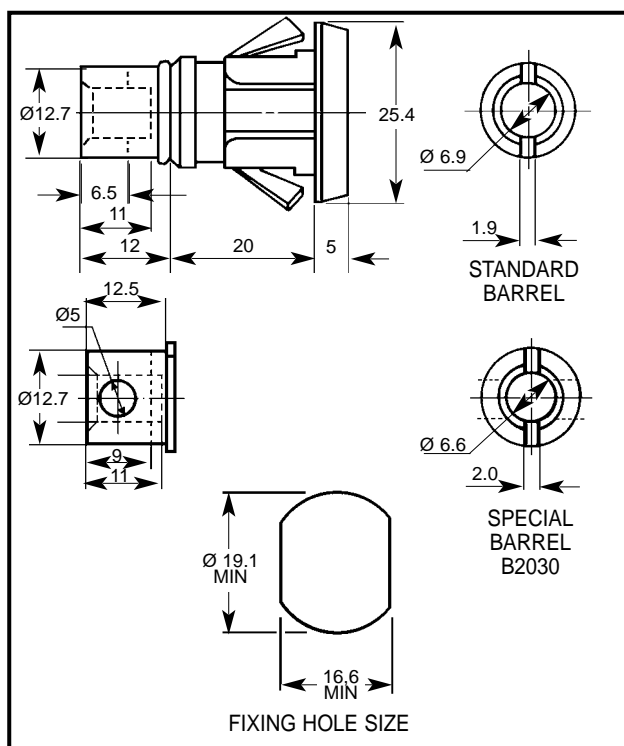
TELEPHONE: 0121 505 0400. FAX: 0121 505 0420. E-MAIL: sales@lowe-and-fletcher.co.uk WEB SITE: www.lowe-and-fletcher.co.uk

Multi-Drawer Lock — Multi-Drawer Lock—

20mm



1306



PRODUCT REFERENCE NUMBERS

KEY SERIES	COMBINATIONS	NUT FIXED HOUSING (ROUND HEAD)	SNAP-IN FIXING (SQUARE HEAD)
92 M	200	1326	1306
		B186*	1380*
95-97 M	2000	1426	1406

M = MASTER KEY SYSTEM: SUPPLIED TO ORDER ONLY

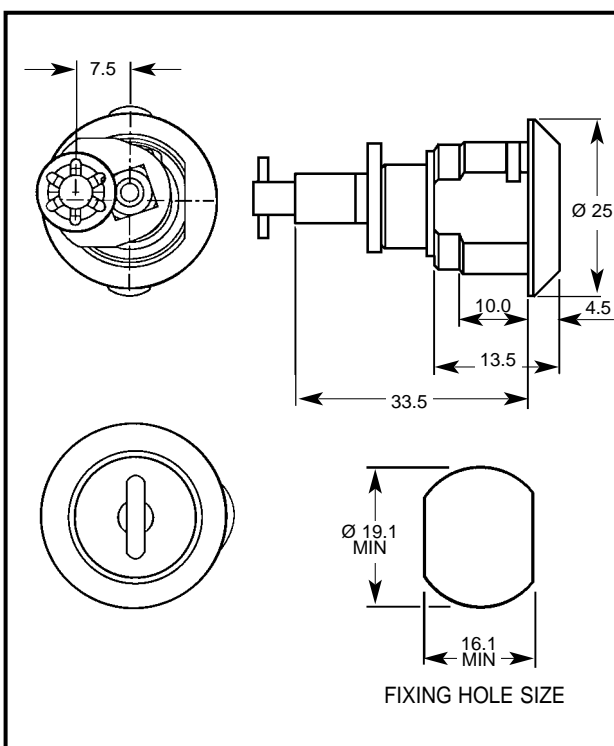
STANDARD MOVEMENTS: 1, 2, 3, 4, 7
(MOVEMENTS 8, 9 AVAILABLE ON 1306)

STANDARD FINISHES: BRIGHT CHROME
STAINLESS STEEL CAP ON ROUND HEAD LOCKS ONLY

*LOCK 1380 AND B186 USE SPECIAL BARREL B2030
(SEE DRAWING)



B722



PRODUCT REFERENCE NUMBERS

KEY SERIES	COMBINATIONS	HORSESHOE CLIP FIXING
25-27 M	2000	B722

MAXIMUM PANEL THICKNESS: 6mm

M = MASTER KEY SYSTEM: SUPPLIED TO ORDER ONLY

STANDARD MOVEMENTS: 3,4,8

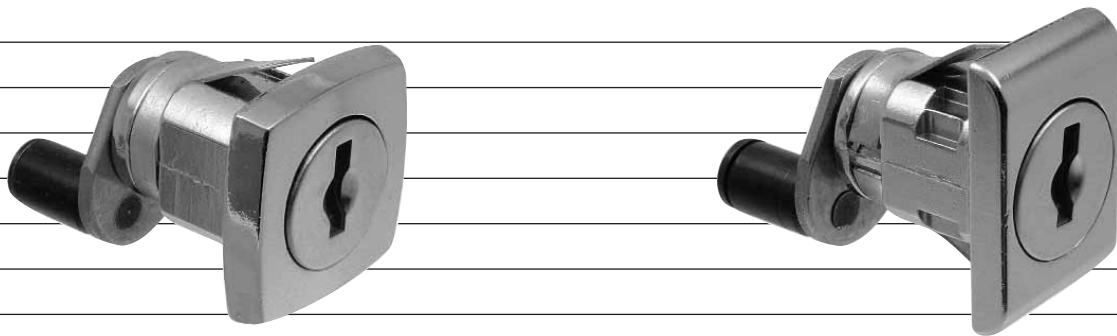
STANDARD FINISHES: BRIGHT CHROME

LOWE & FLETCHER LTD

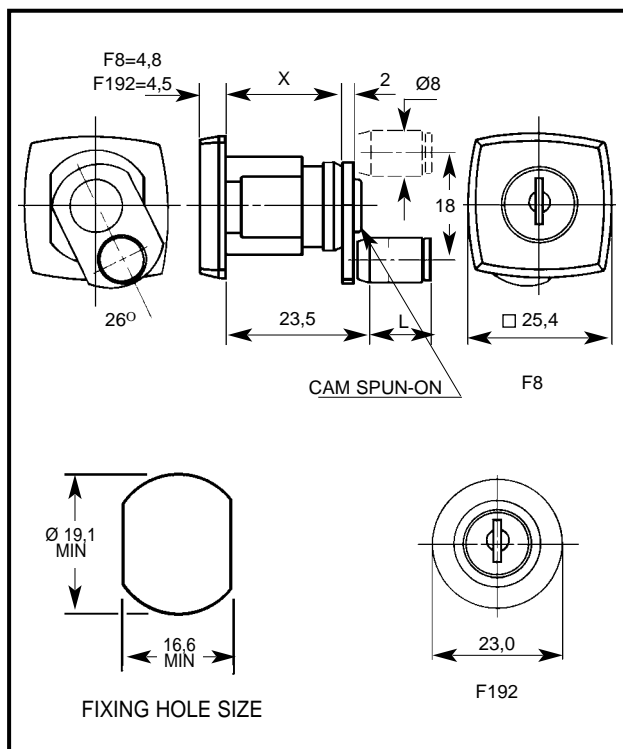
MOORCROFT DRIVE, WEDNESBURY, WEST MIDLANDS, ENGLAND WS10 7DE.

TELEPHONE: 0121 505 0400. FAX: 0121 505 0420. E-MAIL: sales@lowe-and-fletcher.co.uk WEB SITE: www.lowe-and-fletcher.co.uk

Multi-Drawer Lock 20mm



F8



PRODUCT REFERENCE NUMBERS

KEY SERIES	COMBINATIONS	SNAP-IN FIXING	X	L
93 E M	500	F8	20	11,5
9000 M	500	F192	20	11,5

MAXIMUM PANEL THICKNESS: 3mm

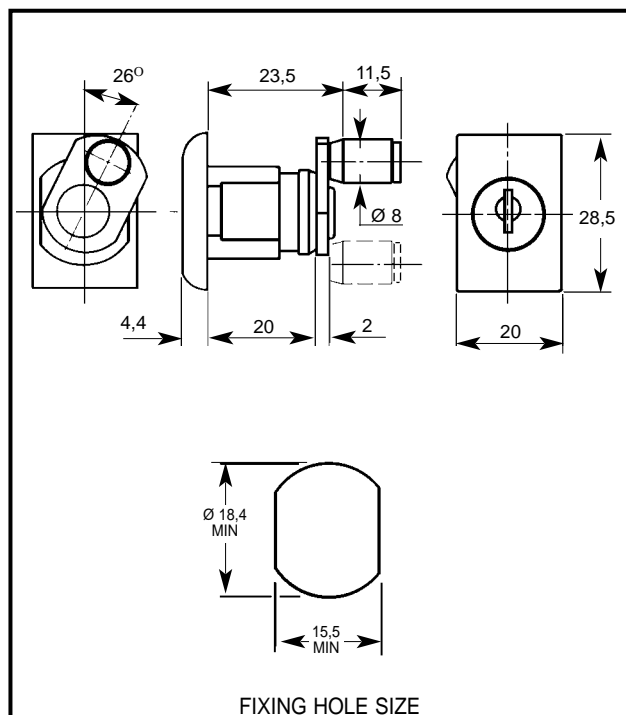
M = MASTER KEY SYSTEM: SUPPLIED TO ORDER ONLY

STANDARD MOVEMENTS: 3, 4

STANDARD FINISHES: BRIGHT CHROME

ROLLER CAM - OTHER CAM TRAVEL, CAM AND/OR PANEL THICKNESS SUPPLIED TO ORDER ONLY

4796



PRODUCT REFERENCE NUMBERS

KEY SERIES	COMBINATIONS	SNAP-IN FIXING
93 E M	500	4796

MAXIMUM PANEL THICKNESS: 3mm

M = MASTER KEY SYSTEM: SUPPLIED TO ORDER ONLY

STANDARD MOVEMENTS: 3, 4

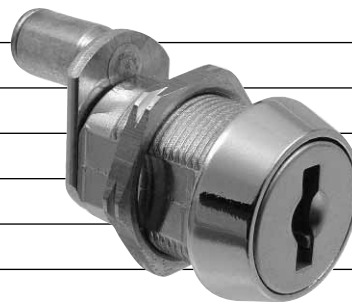
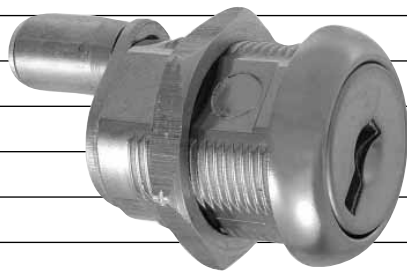
STANDARD FINISH: BRIGHT CHROME

LOWE & FLETCHER LTD

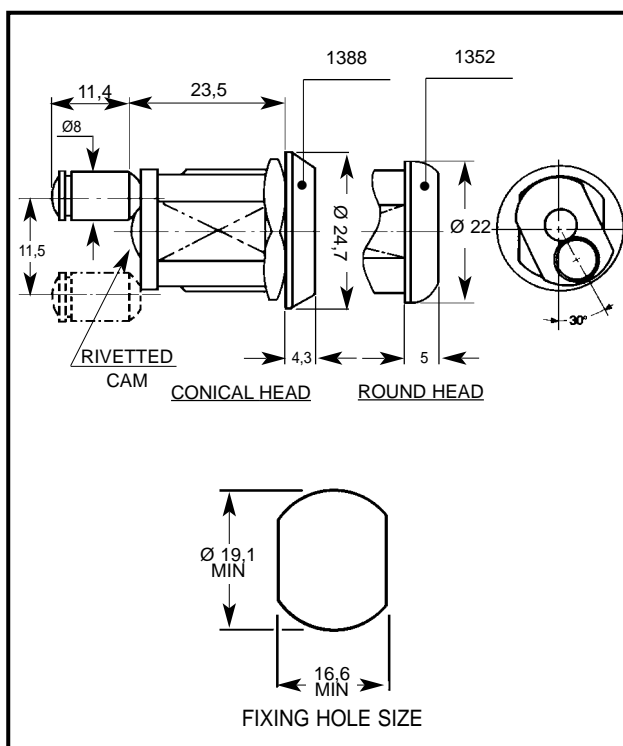
MOORCROFT DRIVE, WEDNESBURY, WEST MIDLANDS, ENGLAND WS10 7DE.

TELEPHONE: 0121 505 0400. FAX: 0121 505 0420. E-MAIL: sales@lowe-and-fletcher.co.uk WEB SITE: www.lowe-and-fletcher.co.uk

Multi-Drawer Lock 20mm



1352



PRODUCT REFERENCE NUMBERS

KEY SERIES	COM-BINATIONS	NUT FIXED HOUSING	HORSESHOE CLIP FIXING
92 M	200	1352 (1388)	1350 (1387)
95-97 M	2000	(1488)	(1487)
93 E M	500	(4788)	(4787)

MAXIMUM PANEL THICKNESS: 12mm ACROSS FLATS, 12mm ACROSS ROUNDS

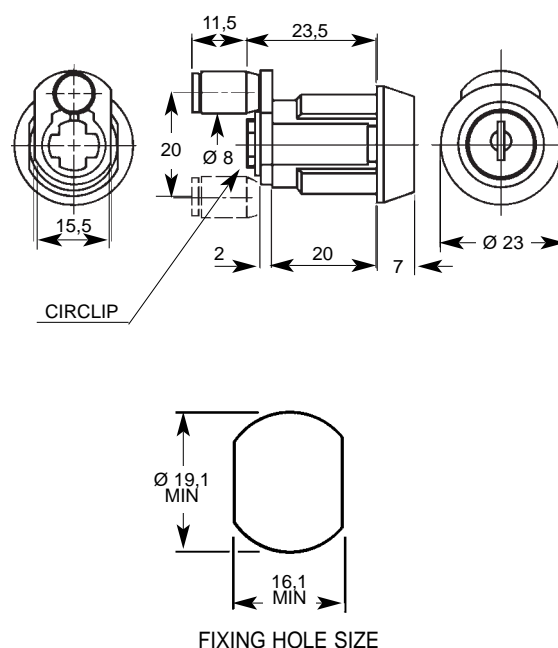
M = MASTER KEY SYSTEM: SUPPLIED TO ORDER ONLY

STANDARD MOVEMENTS: 3, 4

STANDARD FINISHES: BRIGHT CHROME
STAINLESS STEEL CAP

REF. NO.s IN () REFER TO LOCKS WITH A CONICAL HEAD WHICH ARE AVAILABLE IN BRIGHT CHROME FINISH ONLY.

0810



PRODUCT REFERENCE NUMBERS

KEY SERIES	COM-BINATIONS	NUT FIXED HOUSING	HORSESHOE CLIP FIXING
45-47 M	2000	0811(0820)	0810 (0813)

MAXIMUM PANEL THICKNESS: NUT FIXING: 12mm, HORSESHOE CLIP FIXING 12mm ACROSS FLATS ONLY

M = MASTER KEY SYSTEM: SUPPLIED TO ORDER ONLY

STANDARD MOVEMENTS: 3, 4

STANDARD FINISH: BRIGHT CHROME

REF. NO.s IN () = SUPPLIED WITH SQUARE HEAD

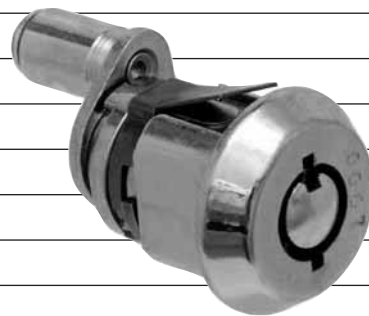
LOWE & FLETCHER LTD

MOORCROFT DRIVE, WEDNESBURY, WEST MIDLANDS, ENGLAND WS10 7DE.

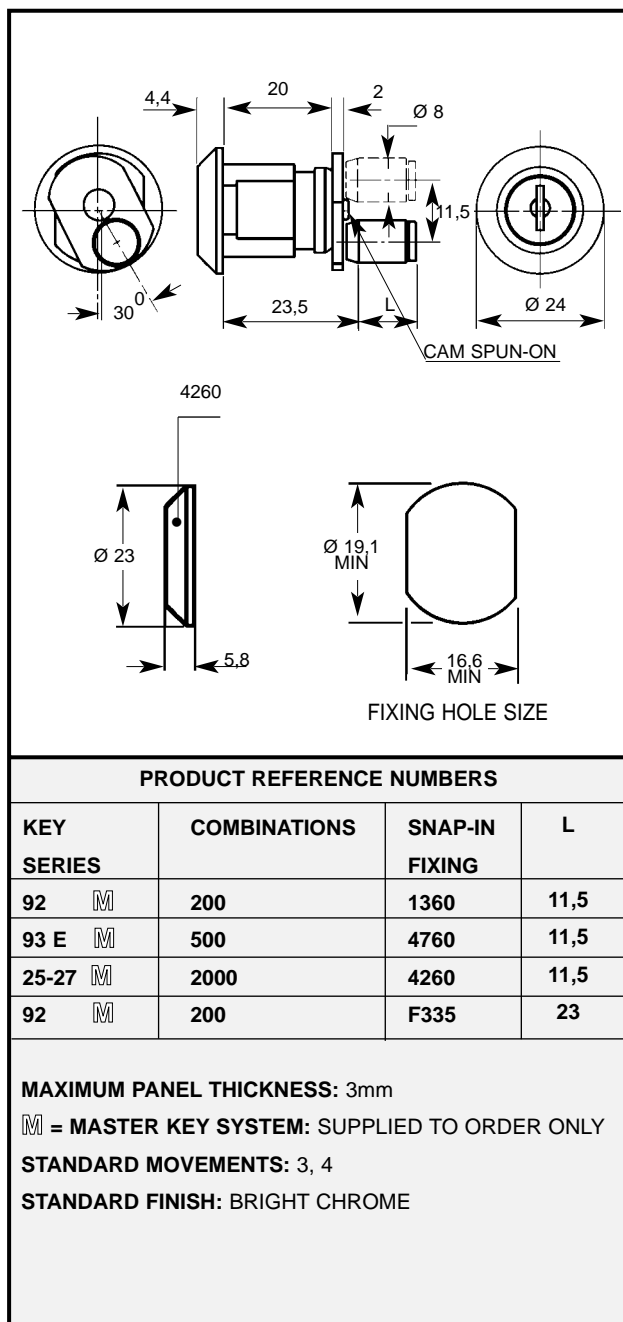
TELEPHONE: 0121 505 0400. FAX: 0121 505 0420. E-MAIL: sales@lowe-and-fletcher.co.uk WEB SITE: www.lowe-and-fletcher.co.uk

Multi-Drawer Lock — Multi-Drawer Lock

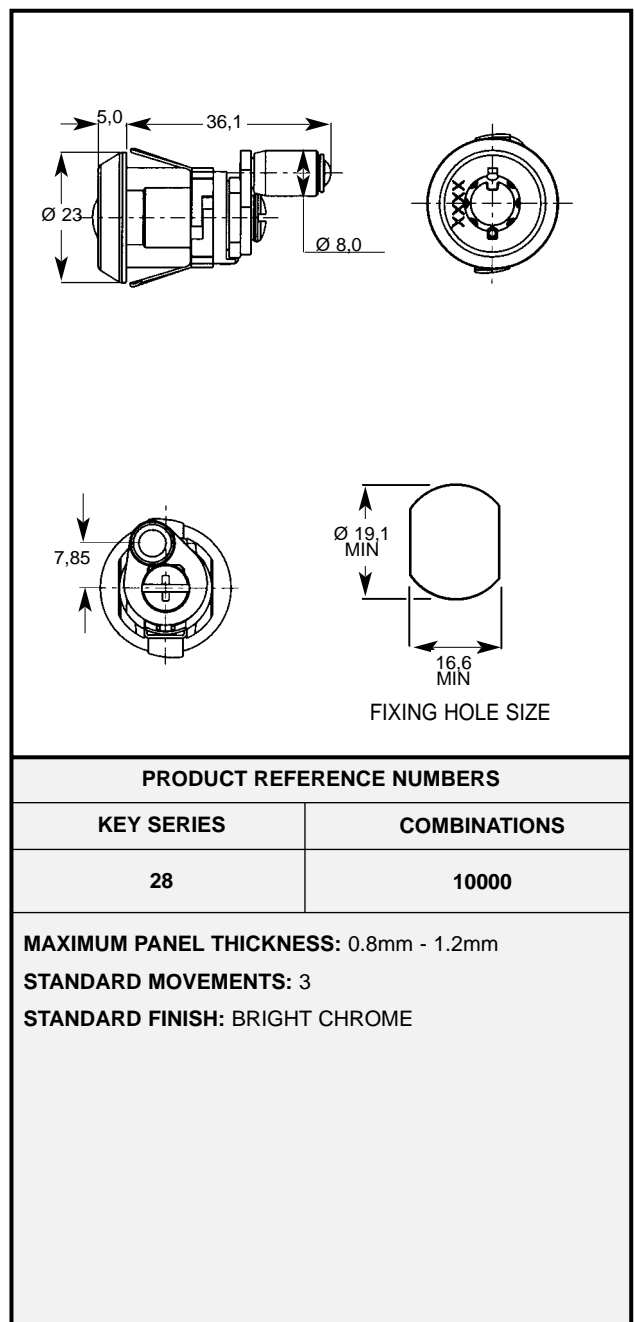
RPT



1360



2417



LOWE & FLETCHER LTD

MOORCROFT DRIVE, WEDNESBURY, WEST MIDLANDS, ENGLAND WS10 7DE.

TELEPHONE: 0121 505 0400. FAX: 0121 505 0420. E-MAIL: sales@lowe-and-fletcher.co.uk WEB SITE: www.lowe-and-fletcher.co.uk

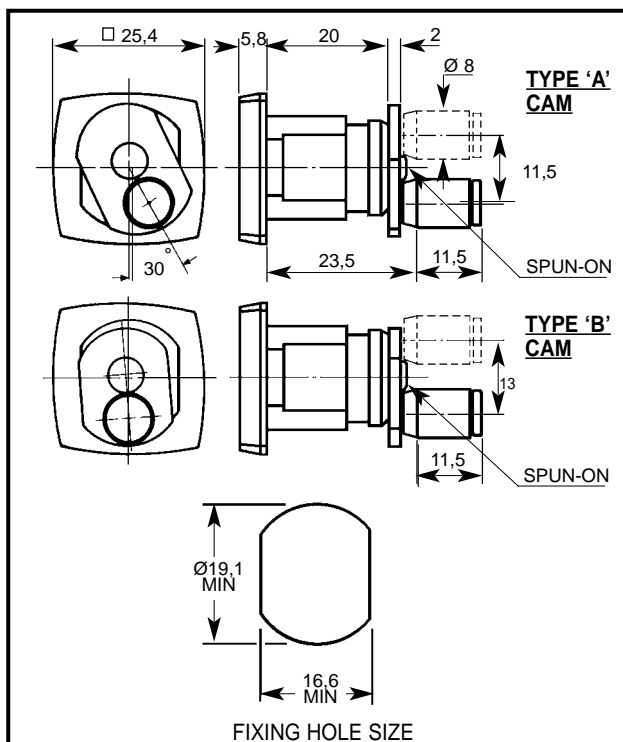
Multi-Drawer Lock




4246



4210



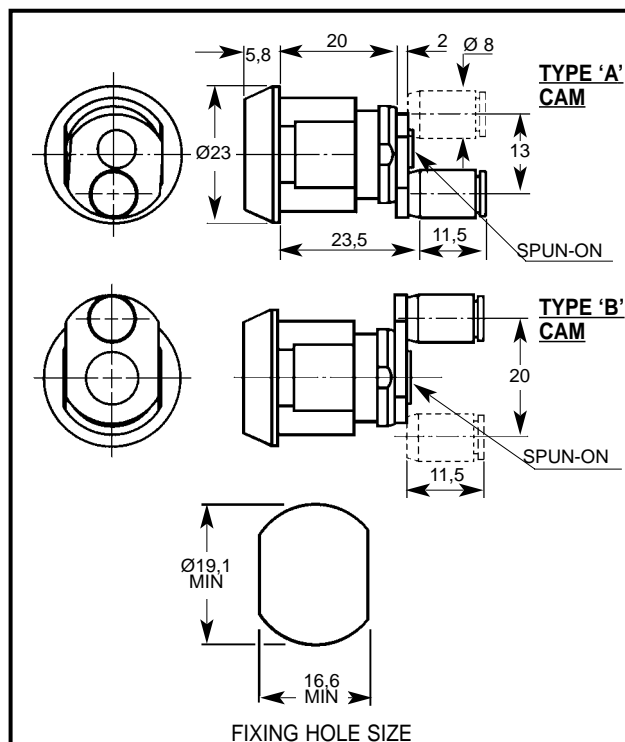
PRODUCT REFERENCE NUMBERS			
KEY SERIES	COMBINATIONS	SNAP-IN FIXING	
		TYPE 'A' CAM	TYPE 'B' CAM
25-27 	2000	4246	4209


MAXIMUM PANEL THICKNESS: 3mm

 = MASTER KEY SYSTEM: SUPPLIED TO ORDER ONLY


STANDARD MOVEMENTS: 3, 4

STANDARD FINISH: BRIGHT CHROME



PRODUCT REFERENCE NUMBERS			
KEY SERIES	COMBINATIONS	SNAP-IN FIXING	
		TYPE 'A' CAM	TYPE 'B' CAM
25-27 	2000	4210	4211

MAXIMUM PANEL THICKNESS: 3mm

 = MASTER KEY SYSTEM: SUPPLIED TO ORDER ONLY

STANDARD MOVEMENTS: 3, 4

STANDARD FINISH: BRIGHT CHROME

LOWE & FLETCHER LTD

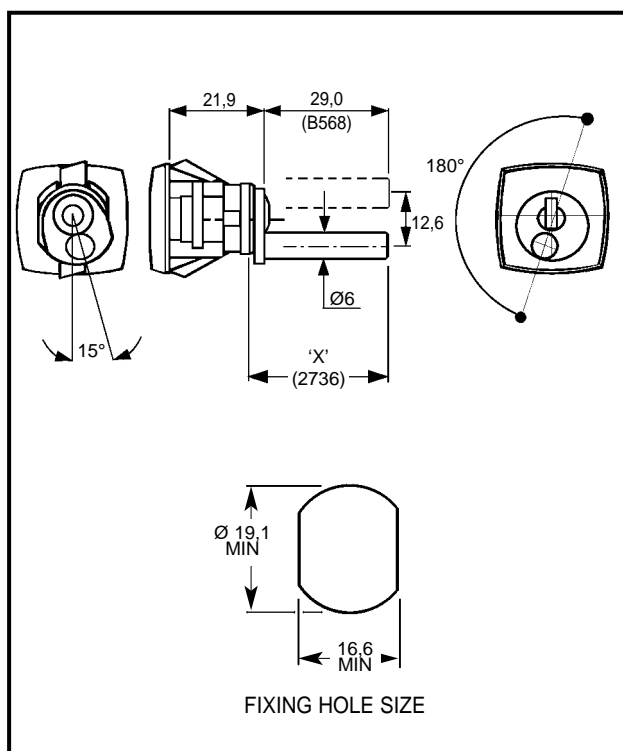
MOORCROFT DRIVE, WEDNESBURY, WEST MIDLANDS, ENGLAND WS10 7DE.

TELEPHONE: 0121 505 0400. FAX: 0121 505 0420. E-MAIL: sales@lowe-and-fletcher.co.uk WEB SITE: www.lowe-and-fletcher.co.uk

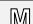

Multi-Drawer Lock



B568



PRODUCT REFERENCE NUMBERS

KEY SERIES	COMBINATIONS	SNAP-IN FIXING
92 	200	B568
95-97 	2000	2736*

MAXIMUM PANEL THICKNESS: 3mm (QUICK FIXING)

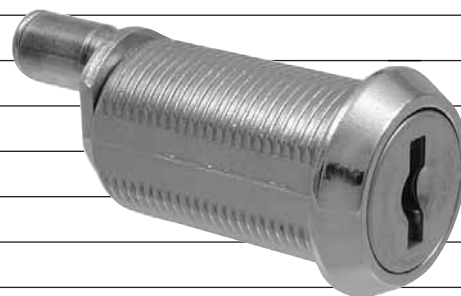
M = MASTER KEY SYSTEM: SUPPLIED TO ORDER ONLY

STANDARD MOVEMENTS: 3, 4

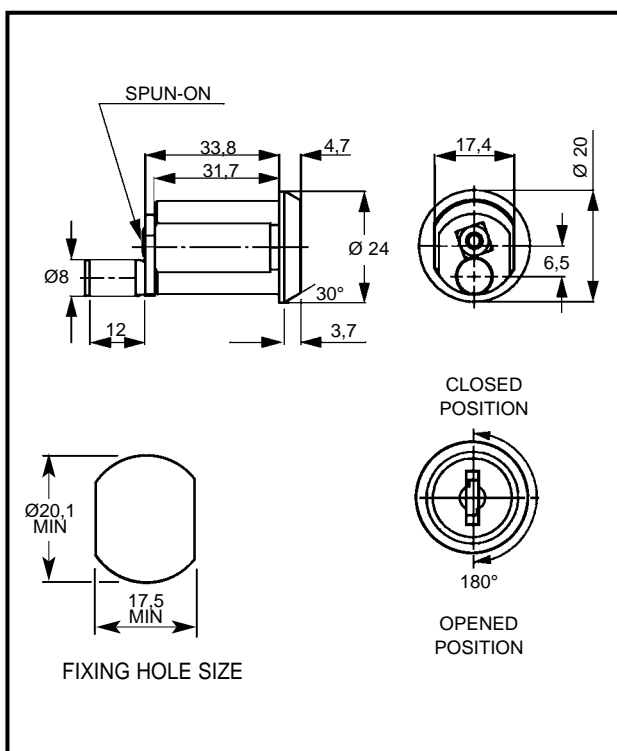
STANDARD FINISHES: BRIGHT CHROME

*** ACTUATOR CAM DIMENSION 'X':**

20mm, 25mm, 32mm, 40mm, 45mm, 55mm.



B565



PRODUCT REFERENCE NUMBERS

KEY SERIES	COMBINATIONS	HORSESHOE CLIP FIXING
25-27 DE 	2000	B565

MAXIMUM PANEL THICKNESS: 25mm

M = MASTER KEY SYSTEM: SUPPLIED TO ORDER ONLY

STANDARD MOVEMENTS: 3, 4

STANDARD FINISH: BRIGHT CHROME

LOWE & FLETCHER LTD

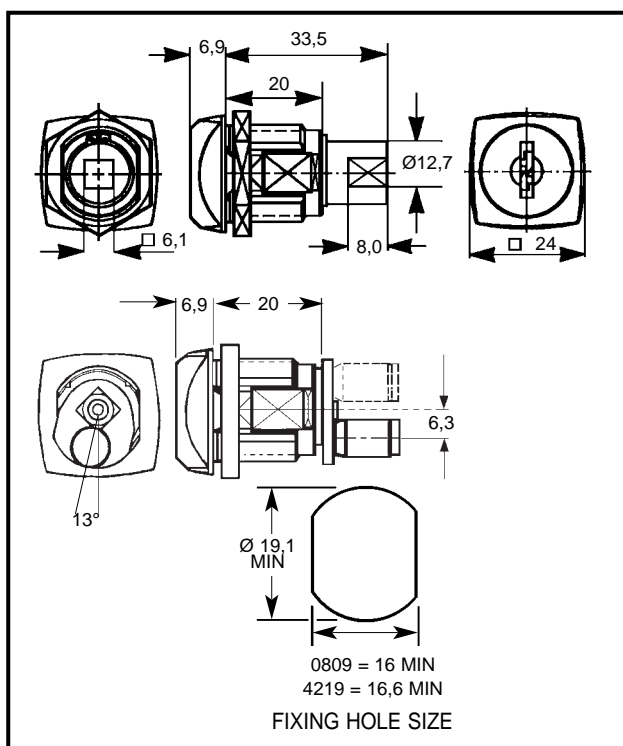
MOORCROFT DRIVE, WEDNESBURY, WEST MIDLANDS, ENGLAND WS10 7DE.

TELEPHONE: 0121 505 0400. FAX: 0121 505 0420. E-MAIL: sales@lowe-and-fletcher.co.uk WEB SITE: www.lowe-and-fletcher.co.uk

Multi-Drawer Lock



0809



PRODUCT REFERENCE NUMBERS

KEY SERIES	COMBINATIONS	NUT FIXED HOUSING
NON REMOVABLE BARREL		
45-47 M	2000	0809
REMOVABLE BARREL		
25-27 M	2000	4219

MAXIMUM PANEL THICKNESS: 12mm

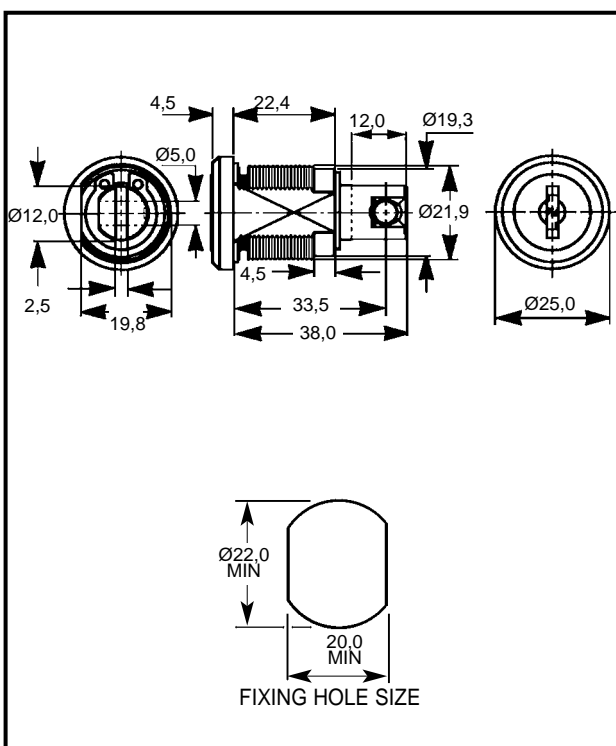
M = MASTER KEY SYSTEM: SUPPLIED TO ORDER ONLY

STANDARD MOVEMENTS: 3 (4219)
7 (0809)

STANDARD FINISHES: BRIGHT CHROME

THE LOCK 4219 IS EQUIPPED WITH AN INTERCHANGEABLE BARREL. THE BARREL IS REMOVABLE IN THE OPEN POSITION OF THE LOCK ONLY BY THE USE OF A SPECIAL KEY.

B289



PRODUCT REFERENCE NUMBERS

KEY SERIES	COMBINATIONS	NUT FIXED HOUSING
45-47 M	2000	B289

MAXIMUM PANEL THICKNESS: 12mm

M = MASTER KEY SYSTEM: SUPPLIED TO ORDER ONLY

STANDARD MOVEMENTS: 7

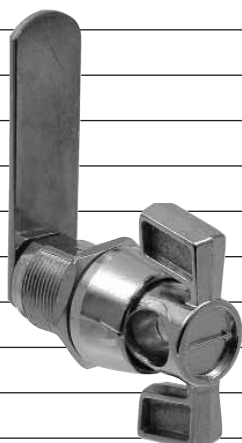
STANDARD FINISHES: BRIGHT CHROME

LOWE & FLETCHER LTD

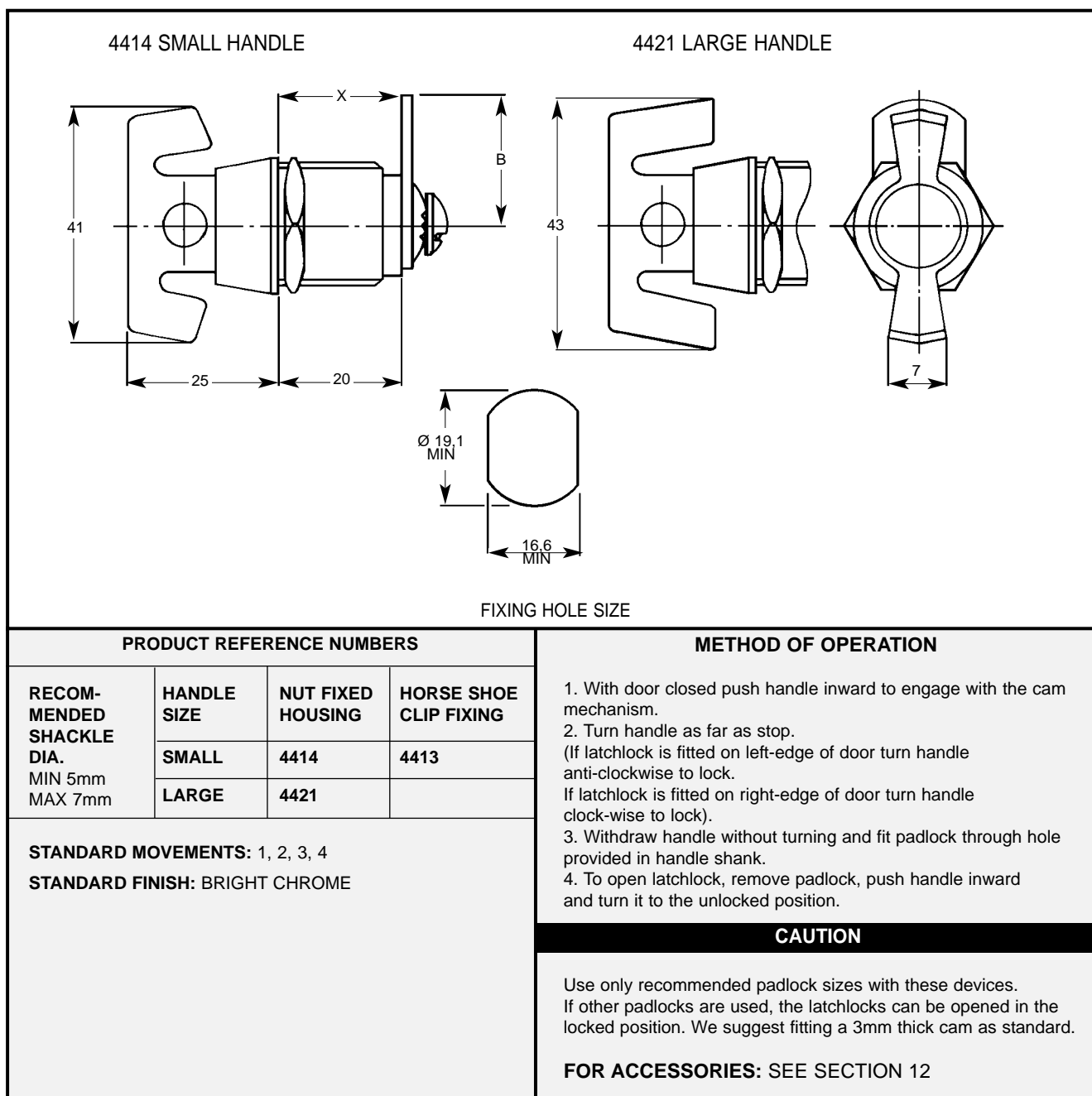
MOORCROFT DRIVE, WEDNESBURY, WEST MIDLANDS, ENGLAND WS10 7DE.

TELEPHONE: 0121 505 0400. FAX: 0121 505 0420. E-MAIL: sales@lowe-and-fletcher.co.uk WEB SITE: www.lowe-and-fletcher.co.uk

Latchlock



4421



LOWE & FLETCHER LTD

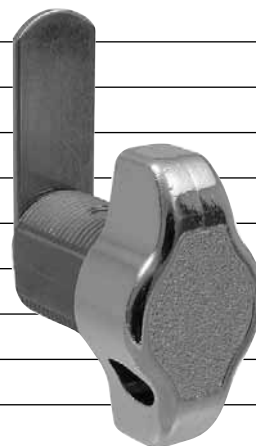
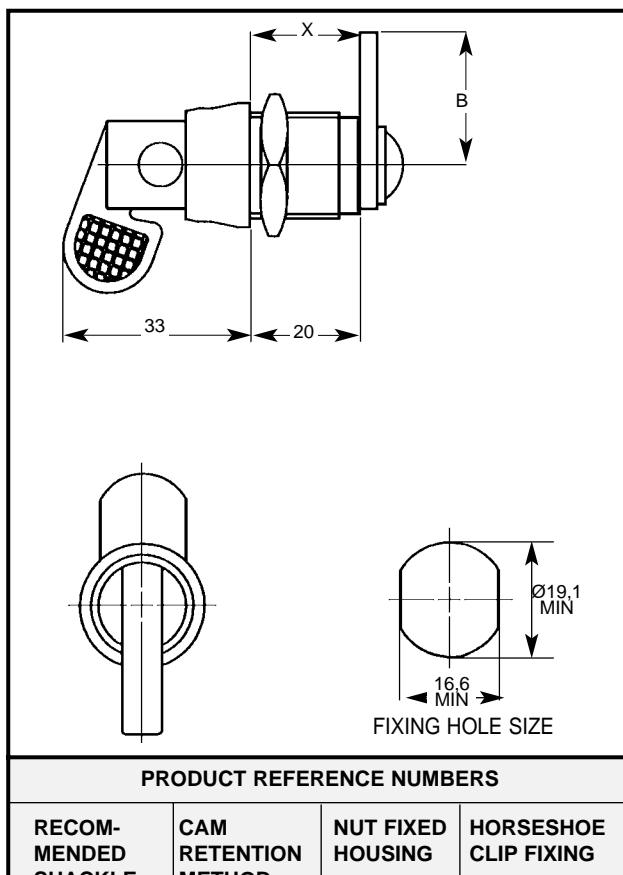
MOORCROFT DRIVE, WEDNESBURY, WEST MIDLANDS, ENGLAND WS10 7DE.

TELEPHONE: 0121 505 0400. FAX: 0121 505 0420. E-MAIL: sales@lowe-and-fletcher.co.uk WEB SITE: www.lowe-and-fletcher.co.uk

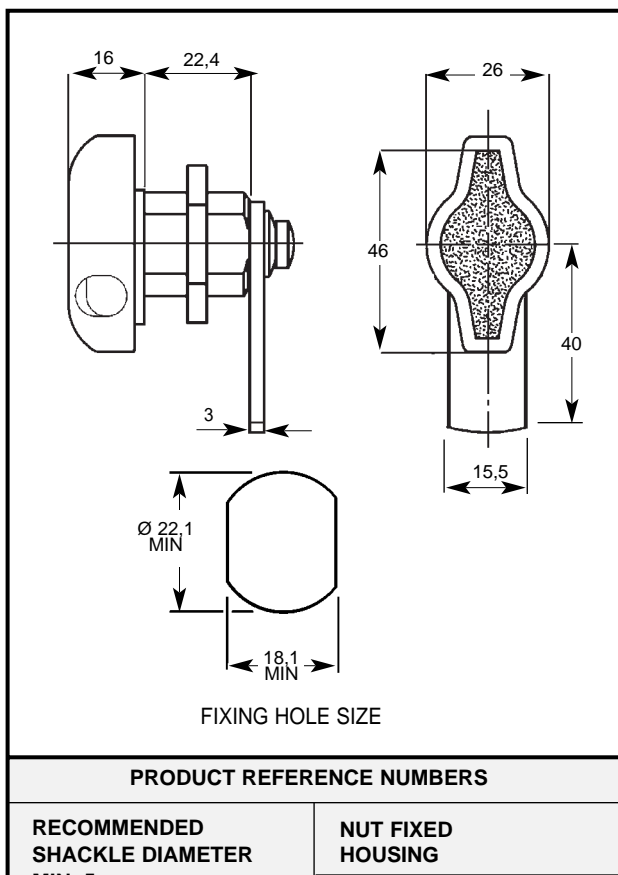
Latchlock 20mm and 22.4mm



4426



4444



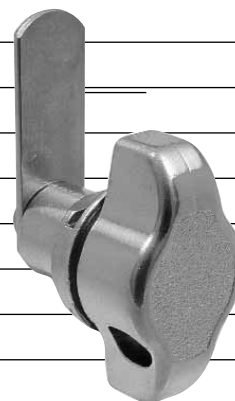
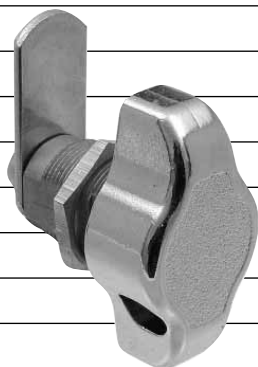
LOWE & FLETCHER LTD

MOORCROFT DRIVE, WEDNESBURY, WEST MIDLANDS, ENGLAND WS10 7DE.

TELEPHONE: 0121 505 0400. FAX: 0121 505 0420. E-MAIL: sales@lowe-and-fletcher.co.uk WEB SITE: www.lowe-and-fletcher.co.uk

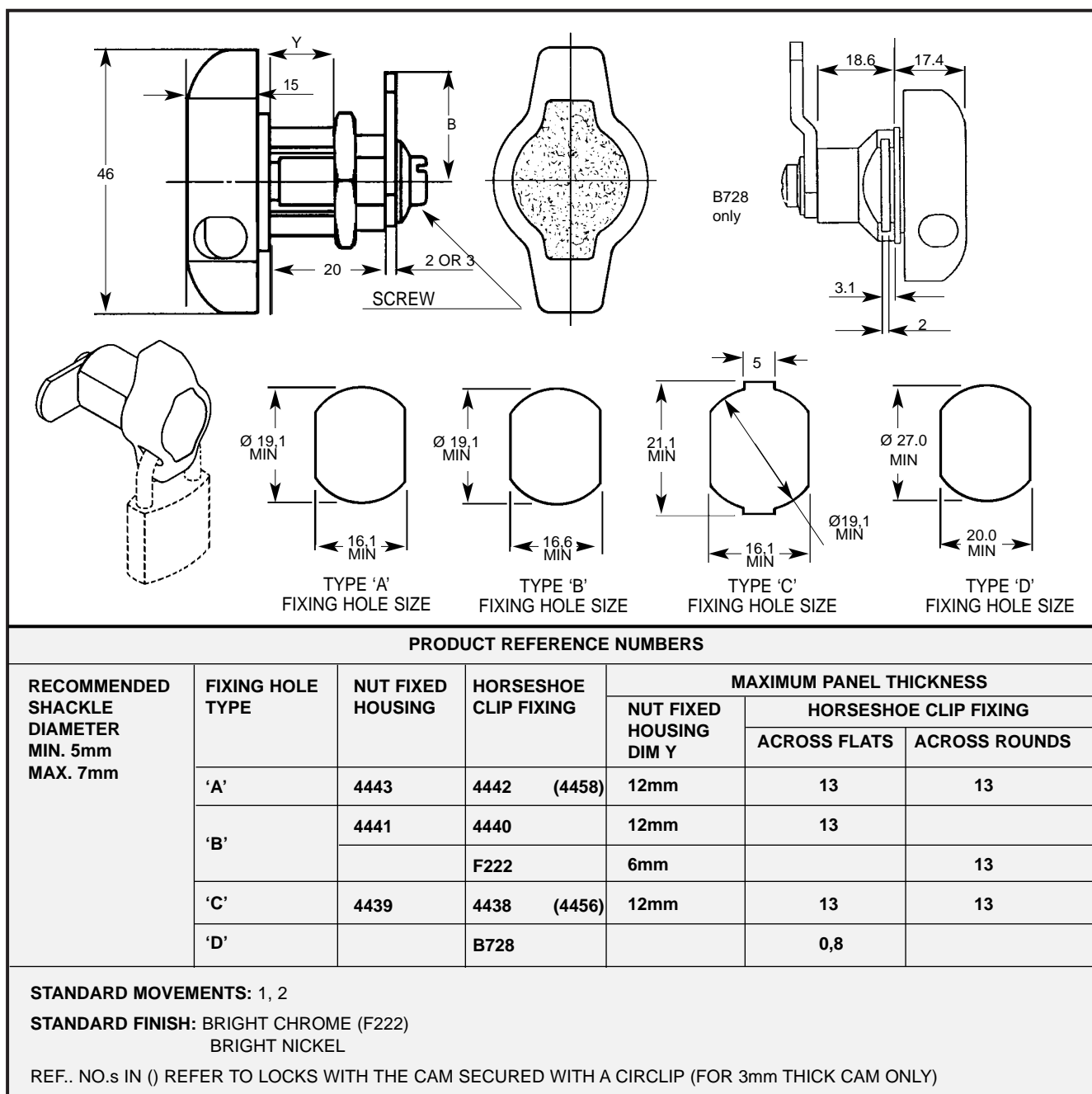
Latchlock 20mm

Latchlock 18.6mm



4441/4443/4438

B728



LOWE & FLETCHER LTD

MOORCROFT DRIVE, WEDNESBURY, WEST MIDLANDS, ENGLAND WS10 7DE.

TELEPHONE: 0121 505 0400. FAX: 0121 505 0420. E-MAIL: sales@lowe-and-fletcher.co.uk WEB SITE: www.lowe-and-fletcher.co.uk

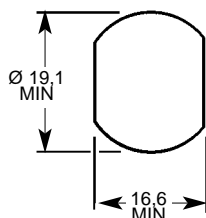
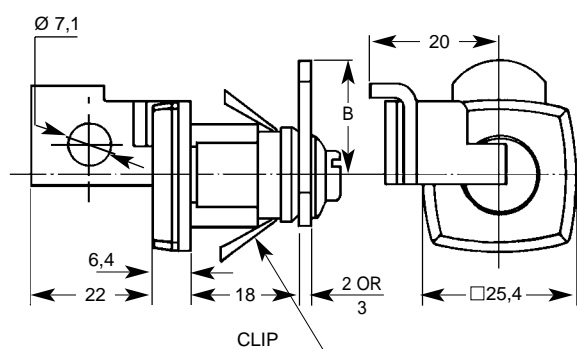
Latchlock 18mm



4408



4409



FIXING HOLE SIZE

PRODUCT REFERENCE NUMBERS

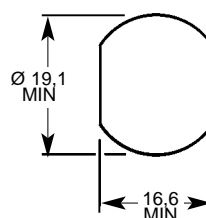
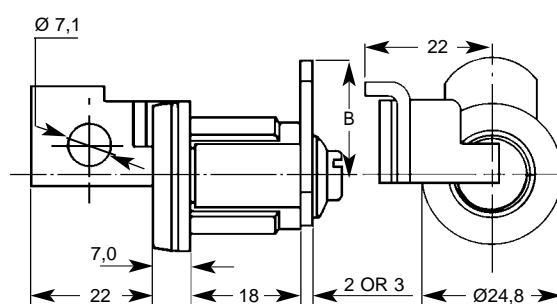
**RECOMMENDED
SHACKLE
DIAMETER 7mm**

SNAP-IN FIXING

4408

STANDARD MOVEMENTS: 1, 2

STANDARD FINISH: BRIGHT CHROME



FIXING HOLE SIZE

PRODUCT REFERENCE NUMBERS

**RECOMMENDED
SHACKLE
DIAMETER 7mm**

NUT FIXED HOUSING

4409

MAXIMUM PANEL THICKNESS: 10mm

STANDARD MOVEMENTS: 1, 2

STANDARD FINISHES: BRIGHT CHROME
STAINLESS STEEL CAP

LOWE & FLETCHER LTD

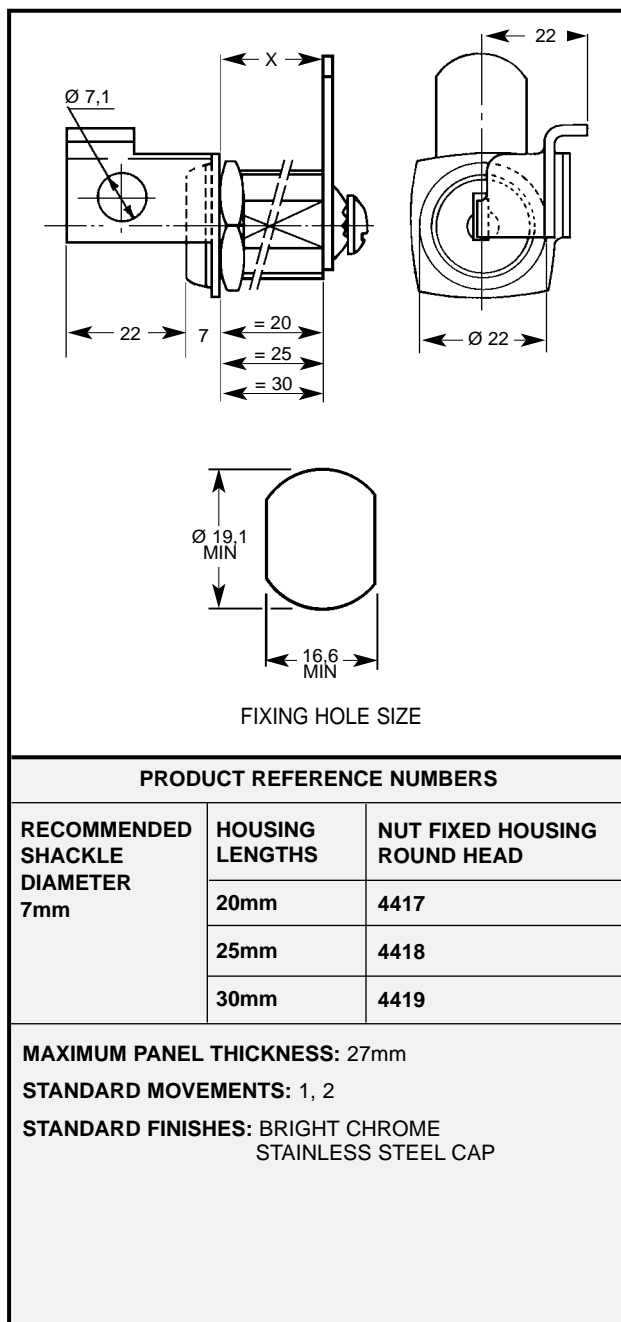
MOORCROFT DRIVE, WEDNESBURY, WEST MIDLANDS, ENGLAND WS10 7DE.

TELEPHONE: 0121 505 0400. FAX: 0121 505 0420. E-MAIL: sales@lowe-and-fletcher.co.uk WEB SITE: www.lowe-and-fletcher.co.uk

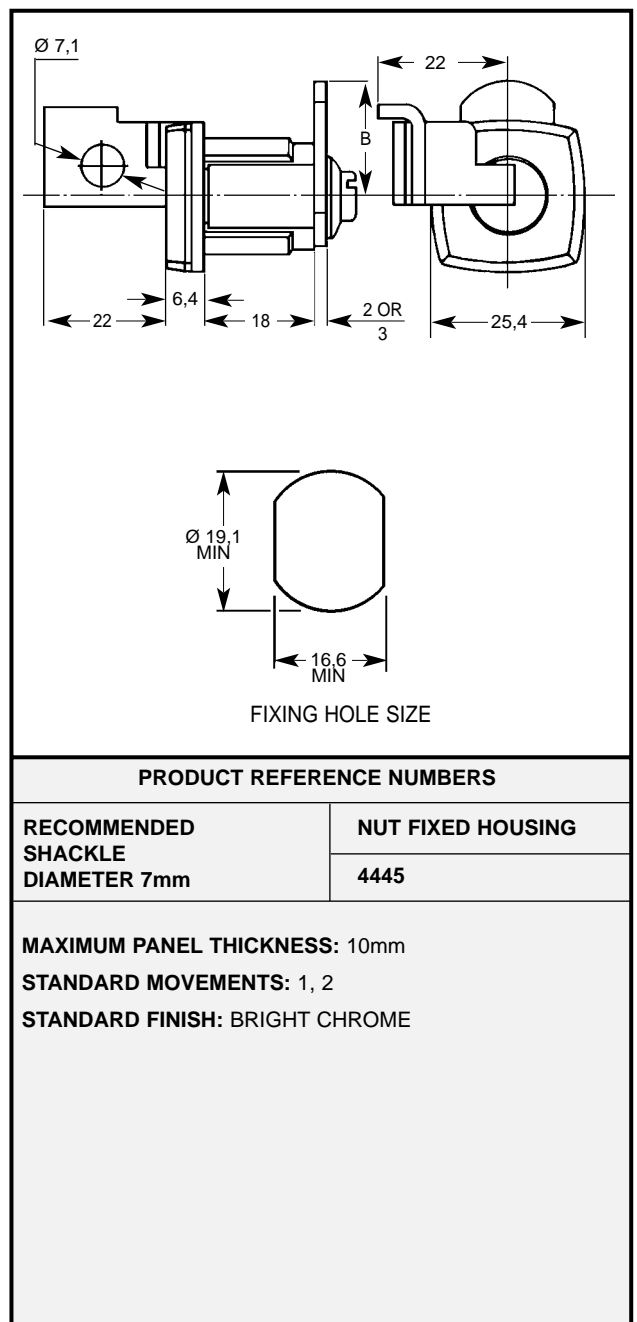
Latchlock 18mm, 20mm, 25mm and 30mm



4419



4445



LOWE & FLETCHER LTD

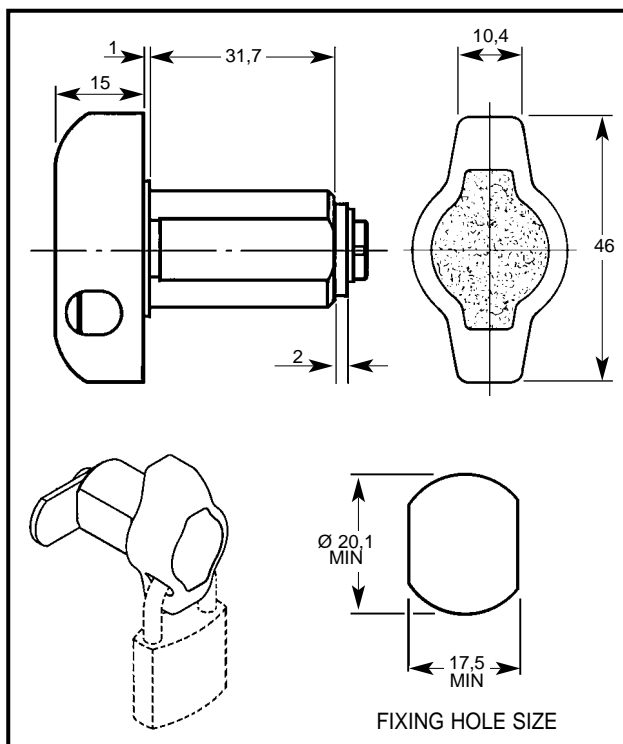
MOORCROFT DRIVE, WEDNESBURY, WEST MIDLANDS, ENGLAND WS10 7DE.

TELEPHONE: 0121 505 0400. FAX: 0121 505 0420. E-MAIL: sales@lowe-and-fletcher.co.uk WEB SITE: www.lowe-and-fletcher.co.uk

Latchlock



4448/4452



PRODUCT REFERENCE NUMBERS

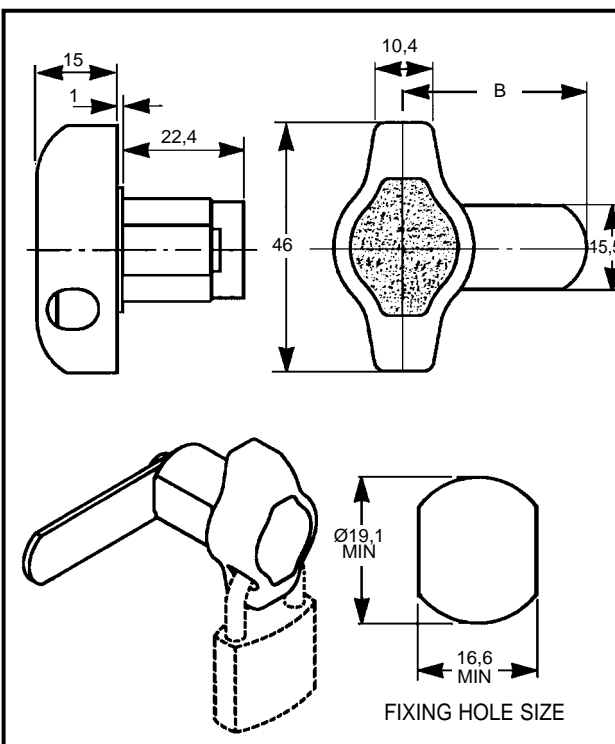
RECOMMENDED SHACKLE DIAMETER MIN. 5mm MAX. 7.5mm	NUT FIXED HOUSING	
	CAM RETAINED BY SCREW	CAM RETAINED BY E-CLIP
	4452	4448

STANDARD MOVEMENTS: 1, 2

STANDARD FINISH: BRIGHT CHROME



B562



PRODUCT REFERENCE NUMBERS

RECOMMENDED SHACKLE DIAMETER MIN. 5mm MAX. 7.5mm	CLIP FIXED HOUSING
	B562

STANDARD MOVEMENTS: 1

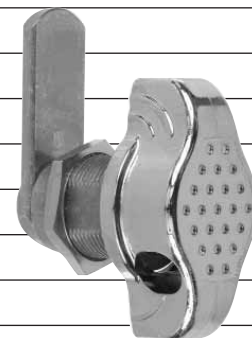
STANDARD FINISH: BRIGHT CHROME

LOWE & FLETCHER LTD

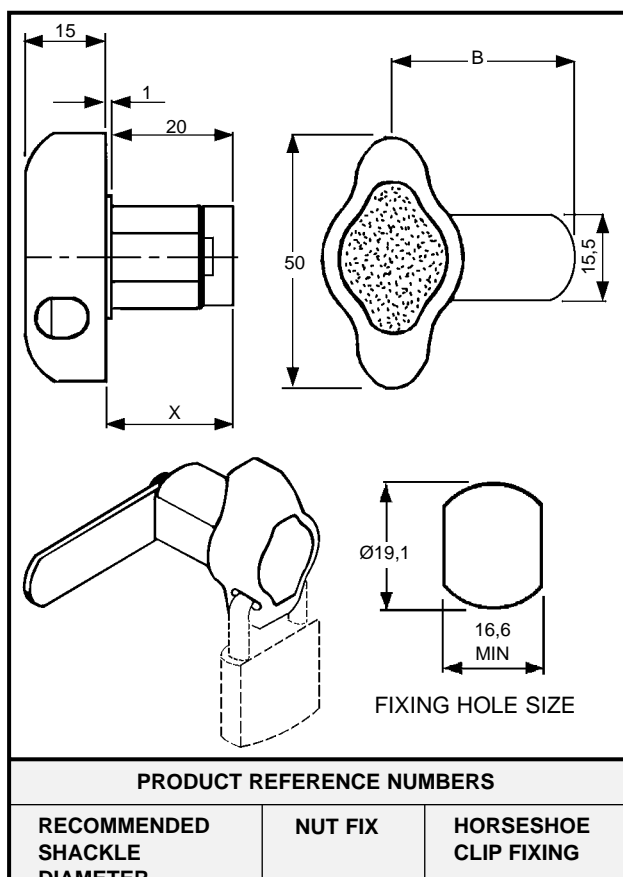
MOORCROFT DRIVE, WEDNESBURY, WEST MIDLANDS, ENGLAND WS10 7DE.

TELEPHONE: 0121 505 0400. FAX: 0121 505 0420. E-MAIL: sales@lowe-and-fletcher.co.uk WEB SITE: www.lowe-and-fletcher.co.uk

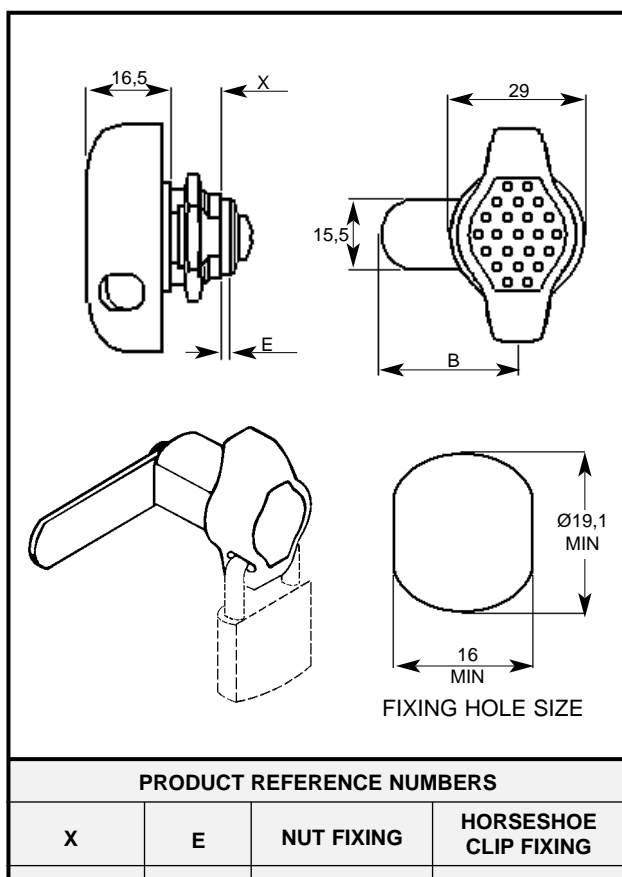
Latchlock 10mm, 20mm



4459



4485



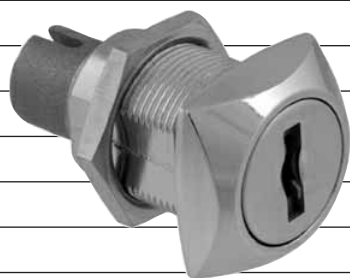
LOWE & FLETCHER LTD

MOORCROFT DRIVE, WEDNESBURY, WEST MIDLANDS, ENGLAND WS10 7DE.

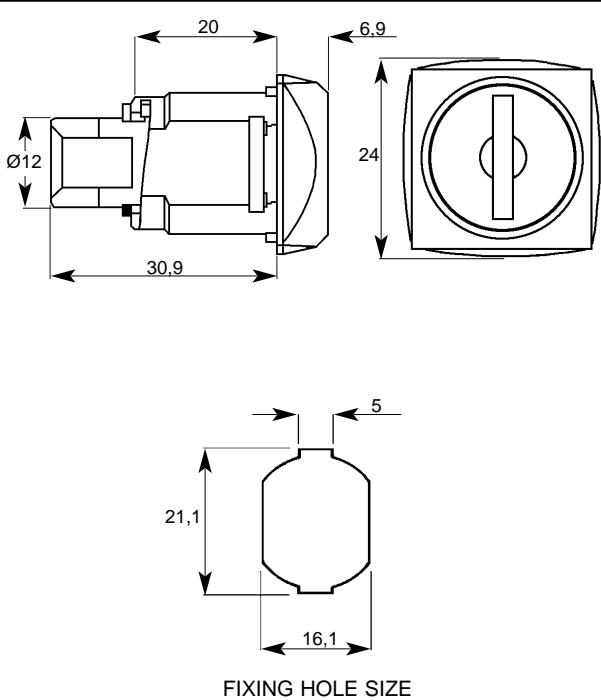
TELEPHONE: 0121 505 0400. FAX: 0121 505 0420. E-MAIL: sales@lowe-and-fletcher.co.uk WEB SITE: www.lowe-and-fletcher.co.uk

Multi Drawer Lock

Multi Drawer Lock



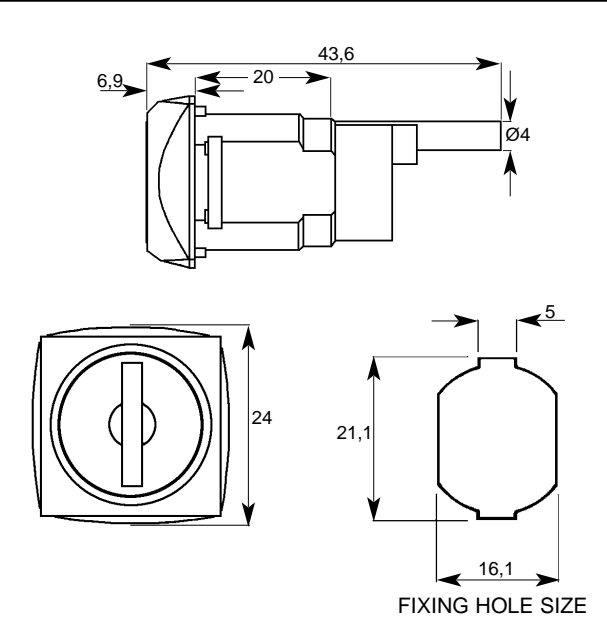
C079



PRODUCT REFERENCE NUMBERS		
KEY SERIES	COMBINATIONS	PRODUCT REF
45-47 M	2000	C079

MAXIMUM PANEL THICKNESS: 12mm
M = MASTER KEY SYSTEM: SUPPLIED TO ORDER ONLY
STANDARD MOVEMENTS: 03 & 04
STANDARD FINISH: NICKEL PLATED & CHROME PLATED

C077



PRODUCT REFERENCE NUMBERS		
KEY SERIES	COMBINATIONS	PRODUCT REF
K M	2000	C077

MAXIMUM PANEL THICKNESS: 12mm
M = MASTER KEY SYSTEM: SUPPLIED TO ORDER ONLY
STANDARD MOVEMENTS: 01,02,03,04 & 08
STANDARD FINISH: NICKEL PLATED & CHROME PLATED

LOWE & FLETCHER LTD

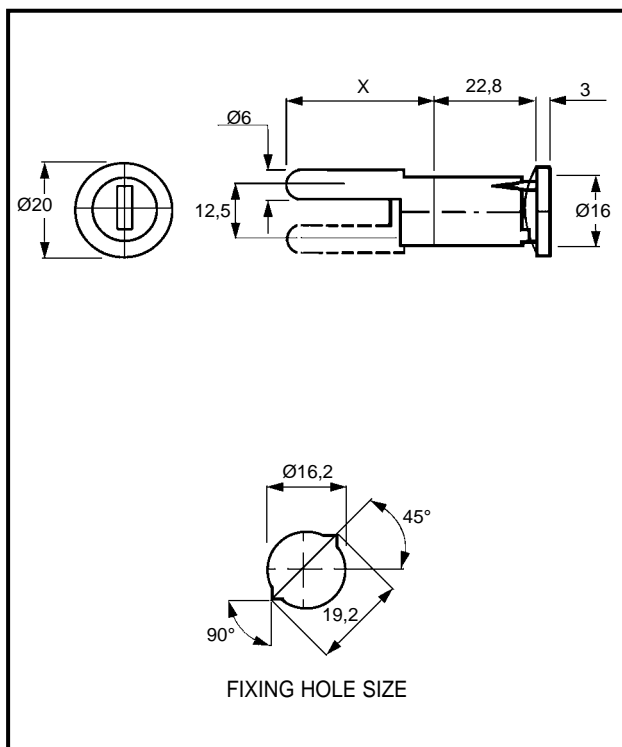
MOORCROFT DRIVE, WEDNESBURY, WEST MIDLANDS, ENGLAND WS10 7DE.
TELEPHONE: 0121 505 0400. FAX: 0121 505 0420. E-MAIL: sales@lowe-and-fletcher.co.uk WEB SITE: www.lowe-and-fletcher.co.uk

Pedestal Locks

(Removable Barrel)




5606/5607



FIXING HOLE SIZE

PRODUCT REFERENCE NUMBERS

KEY SERIES	COMBINATIONS	H/SHOE CLIP	SNAP IN CLIP
35 	200*	5606	5607

MAXIMUM PANEL THICKNESS: 0.9mm

M = MASTER KEY SYSTEM: SUPPLIED TO ORDER ONLY

STANDARD MOVEMENTS: 3, 4

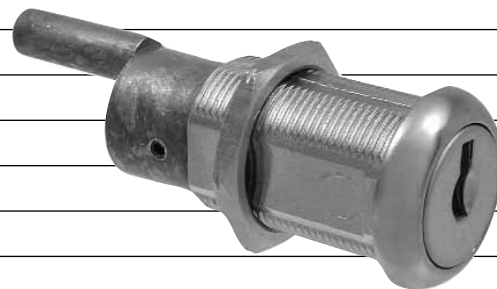
STANDARD FINISHES: 2A - BRIGHT CHROME
2C - SATIN CHROME
2B - BLACK CHROME

STANDARD CAM LENGTHS 'X': 20, 25, 32, 40, 45, 55
(CAM No. 76420 - - LAST TWO DIGITS = CAM LENGTH)
(I.E. 7642032 = 32mm CAM)

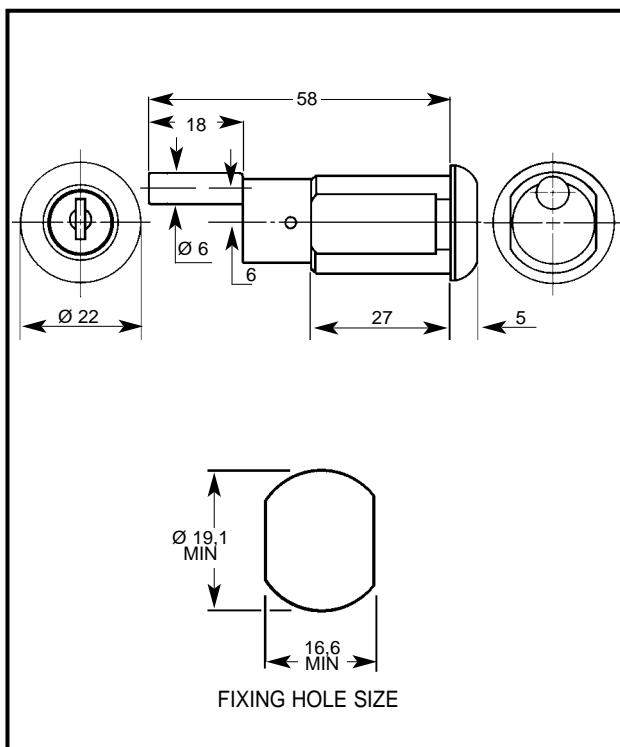
*500 TO ORDER ONLY

REFER TO SECTION 12 FOR DETAILS ON REMOVABLE BARREL SYSTEM

Pedestal Locks





1318



FIXING HOLE SIZE

PRODUCT REFERENCE NUMBERS

KEY SERIES	COMBINATIONS	NUT FIXED HOUSING	HORSESHOE CLIP FIXING
92 	200	1318	1325
95-97 	2000	1418	1425

M = MASTER KEY SYSTEM: SUPPLIED TO ORDER ONLY

STANDARD MOVEMENTS: 3, 4

STANDARD FINISHES: BRIGHT CHROME
STAINLESS STEEL CAP

PRONGED WASHER PT. No. 7005201

FLAT WASHER PT. No. 9011201

FOR WOODEN PANELS WE RECOMMEND THE USE OF A PRONGED WASHER

LOWE & FLETCHER LTD

MOORCROFT DRIVE, WEDNESBURY, WEST MIDLANDS, ENGLAND WS10 7DE.

TELEPHONE: 0121 505 0400. FAX: 0121 505 0420. E-MAIL: sales@lowe-and-fletcher.co.uk WEB SITE: www.lowe-and-fletcher.co.uk

Multi-Drawer Lock — Multi-Drawer Lock

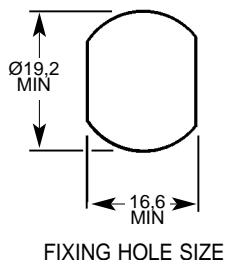
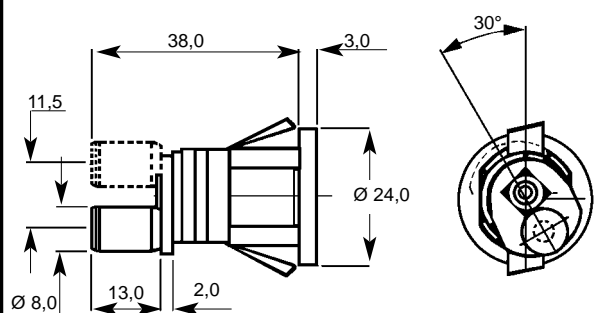
(Removable Barrel) (Removable Barrel)



5623



5626



PRODUCT REFERENCE NUMBERS

KEY SERIES	COMBINATIONS	NUT FIXING	HORSESHOE CLIP FIXING	SNAP-IN FIXING
35 M	200*	5623	5622	5624

MAXIMUM PANEL THICKNESS: 5623/5622 = 11mm
5624 = 0.6mm TO 1.82mm

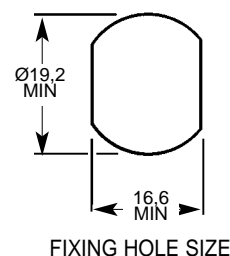
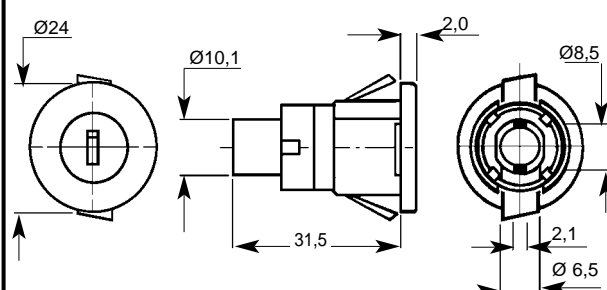
M = MASTER KEY SYSTEM: SUPPLIED TO ORDER ONLY

STANDARD MOVEMENTS: 3

STANDARD FINISHES: 2A - BRIGHT CHROME
2C - SATIN CHROME
2B - BLACK CHROME

*500 TO ORDER ONLY

REFER TO SECTION 12 FOR DETAILS ON REMOVABLE BARREL SYSTEM



PRODUCT REFERENCE NUMBERS

KEY SERIES	COMBINATIONS	NUT FIXING	HORSESHOE CLIP FIXING	SNAP-IN FIXING
35 M	200*	5626	5628	5627

MAXIMUM PANEL THICKNESS: 5626/5628 = 11mm
5627 = 0.6 TO 1.82 MM

M = MASTER KEY SYSTEM: SUPPLIED TO ORDER ONLY

STANDARD MOVEMENTS: 3, 8

STANDARD FINISHES: 2A - BRIGHT CHROME
2C - SATIN CHROME
2B - BLACK CHROME

*500 TO ORDER ONLY

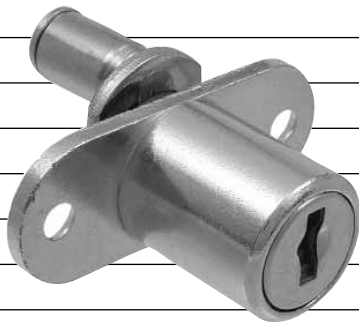
REFER TO SECTION 12 FOR DETAILS ON REMOVABLE BARREL SYSTEM

LOWE & FLETCHER LTD

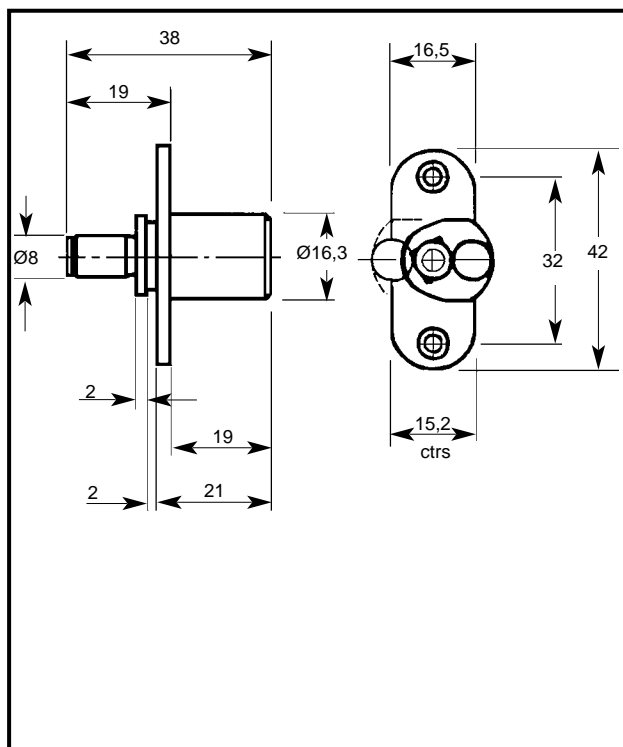
MOORCROFT DRIVE, WEDNESBURY, WEST MIDLANDS, ENGLAND WS10 7DE.

TELEPHONE: 0121 505 0400. FAX: 0121 505 0420. E-MAIL: sales@lowe-and-fletcher.co.uk WEB SITE: www.lowe-and-fletcher.co.uk

Multi-Drawer & Camlock 13mm Side Filer Lock



5829/30



PRODUCT REFERENCE NUMBERS

KEY SERIES	COMBINATIONS	HORIZONTAL FIXING	VERTICAL FIXING
18 M	200*	5829	5830

MAXIMUM PANEL THICKNESS: 19mm

M = MASTER KEY SYSTEM: SUPPLIED TO ORDER ONLY

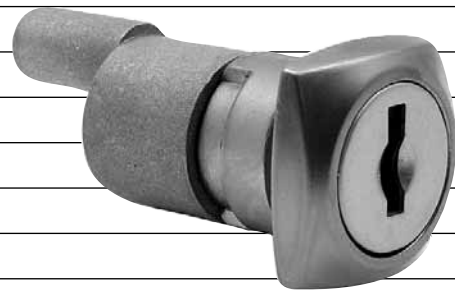
STANDARD MOVEMENTS: 3, 4

STANDARD FINISHES: 7B = BARREL NICKEL
2B = BLACK CHROME

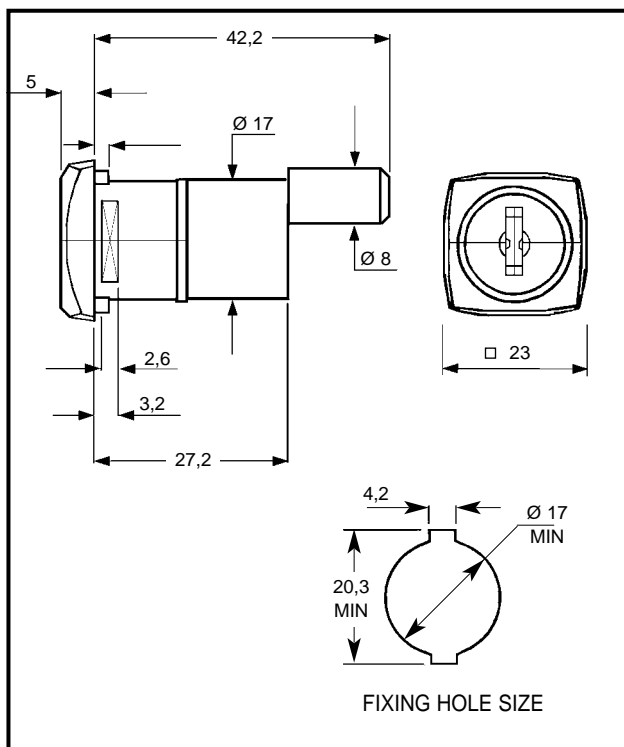
ROSETTE SUPPLIED ON REQUEST: 7008003

*1000 TO ORDER

REFER TO SECTION 12 FOR DETAILS ON ACCESSORIES



F245



PRODUCT REFERENCE NUMBERS

KEY SERIES	COMBINATIONS	HORSESHOE CLIP FIXING
9000 M	500	F245

MAXIMUM PANEL THICKNESS: 1,5mm STANDARD
5,5mm MAXIMUM

M = MASTER KEY SYSTEM: SUPPLIED TO ORDER ONLY

STANDARD MOVEMENTS: 3

STANDARD FINISH: BRIGHT CHROME

LOWE & FLETCHER LTD

MOORCROFT DRIVE, WEDNESBURY, WEST MIDLANDS, ENGLAND WS10 7DE.

TELEPHONE: 0121 505 0400. FAX: 0121 505 0420. E-MAIL: sales@lowe-and-fletcher.co.uk WEB SITE: www.lowe-and-fletcher.co.uk