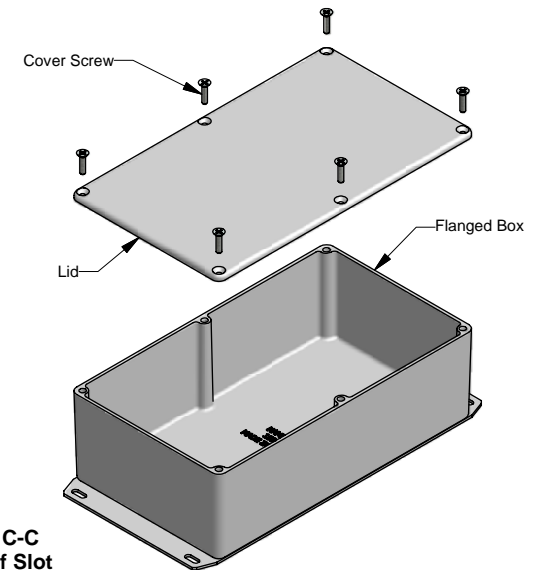
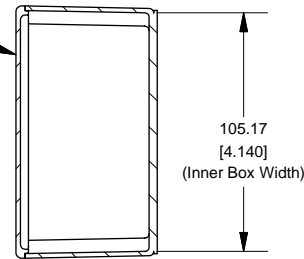
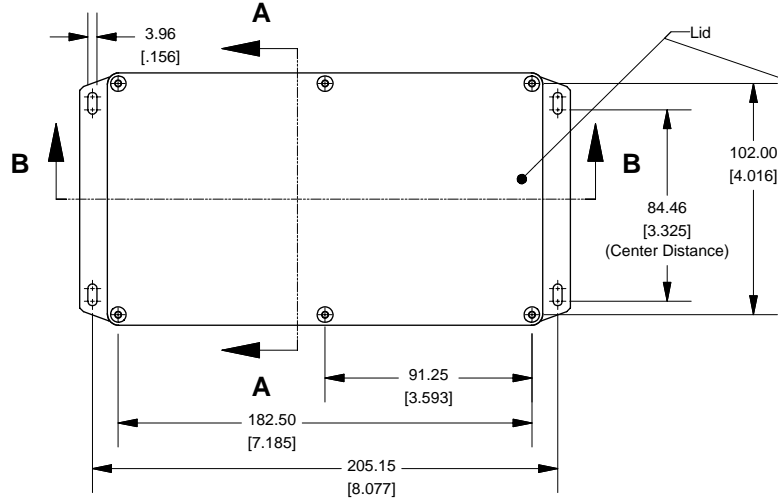


Top View of Assembly

SECTION A-A End View of Assembly

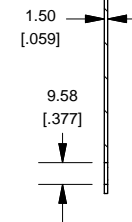
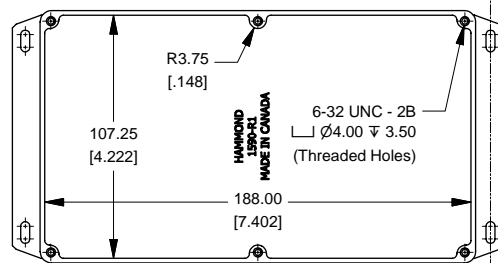
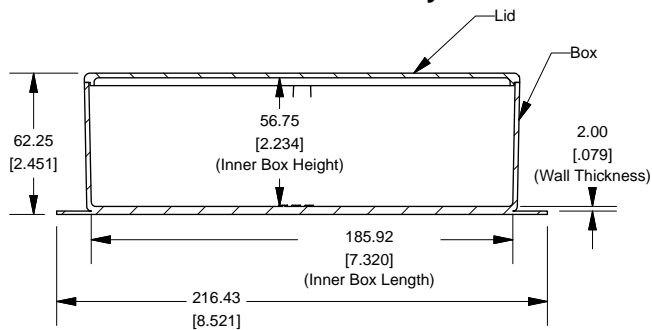
Series 1590R1F (Flanged Box)



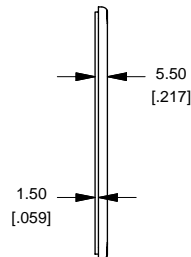
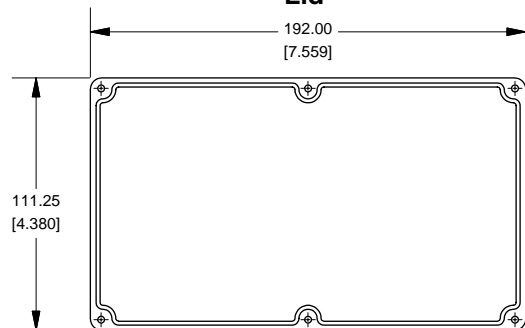
SECTION B-B Side View of Assembly

Top View Looking Inside Box

SECTION C-C Side View of Slot



Lid



NOTE

Purchased assembly includes box, lid and 4 cover screws.
Box and lid are made from Diecast Aluminum Alloy (alloy type 360.1).
Flanges are made from Stamped Aluminum 5052-H32

PART NUMBERS

1590R1F Enclosure	
Unfinished	1590R1F
Black Textured Powder Paint	1590R1FBK
1590R1F Liquid Resistant Enclosure (Silicon Factory Installed Gasket)	
Unfinished	1590WR1F
Black Textured Powder Paint	1590WR1FBK
ACCESSORIES	
Unfinished	
Cover Screws (Pkg 100)	1590MS100
[6-32 x 1/2" Nickel Plated Screws]	
Black Textured Powder Paint	
Cover Screws (Pkg 50)	1590MS50BK
[6-32 x 1/2" Stainless Steel Black Screws]	



www.hammondmfg.com