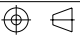
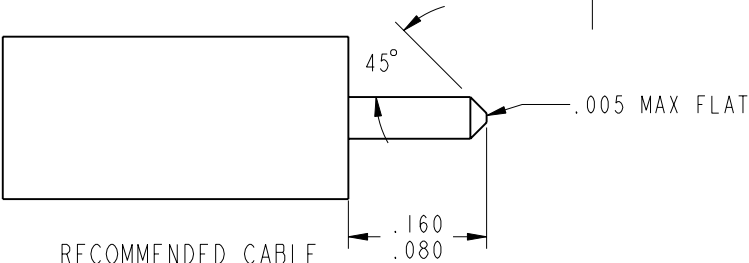
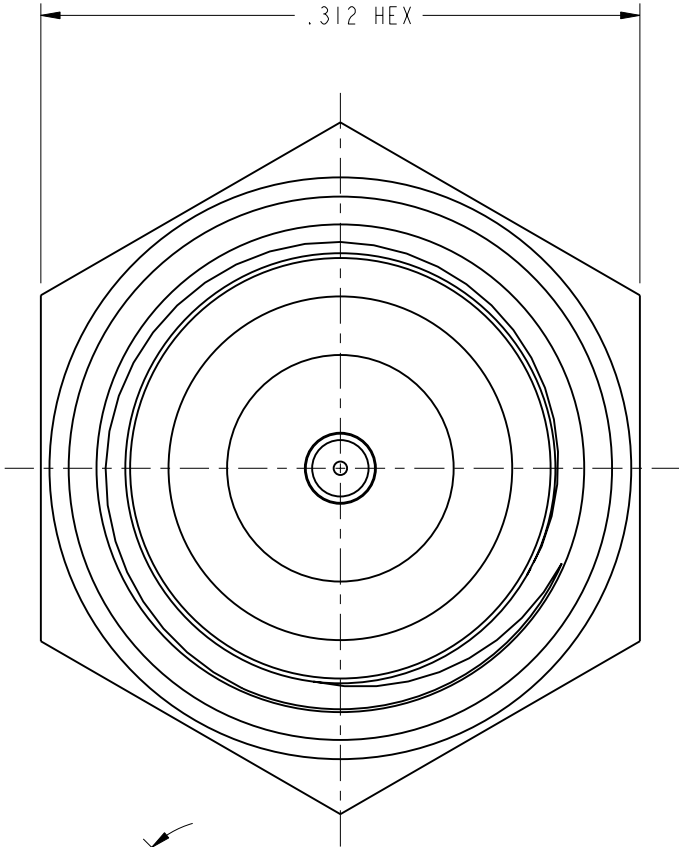
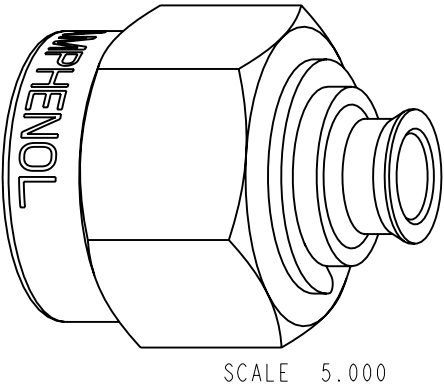
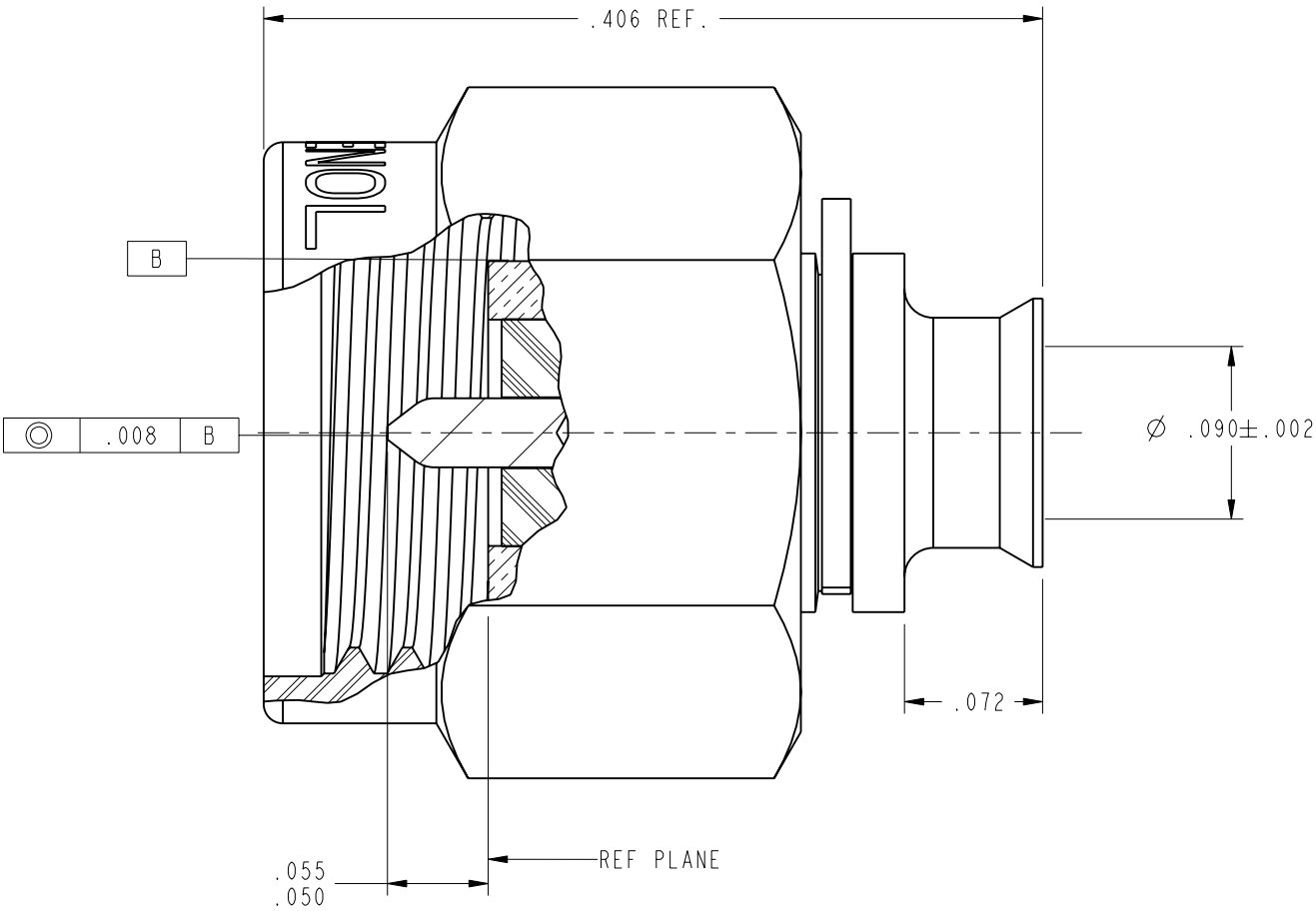


- NOTES:
- 1. PLATING MUST CONFORM TO AMPHENOL SPEC. 349-50560. CONTACT & BODY ARE GOLD PLATED, COUPLING NUT IS PASSIVATED (REF).
  - 2. FOR ASSEMBLY INSTRUCTIONS SEE AMPHENOL SPEC. 349-50114, SHEET 21.
  - 3. VSWR: 1.29 MAX FROM DC TO 26.5 GHz.
  - 4. SOCKET CHARACTERISTICS: USING STEEL TEST PINS WITH A 16 MICROINCH FINISH CHAMFERED 45°, .005 MAX POINT FLAT.  
INSERTION FORCE: 3 LBS MAX WITH A .0210 +.0002/-.0000 DIA PIN  
WITHDRAWAL FORCE: 1 OZ MIN WITH A .0180 +.0000/-.0002 DIA PIN

901-9723-10		REVISIONS			
DRAWING NO.	REV	DESCRIPTION	DATE	ECO	APPR
THIRD ANGLE PROJ. 	--	RELEASE TO MFG.	-----	-----	-----
	D	SEE SHEET 1	1/8/04	44755	CPM
	E	SEE SHEET 1	12/14/04	45277	CPM



RECOMMENDED CABLE  
STRIPPING DIMENSIONS  
SCALE 6.000



CUSTOMER OUTLINE DRAWING  
ALL OTHER SHEETS ARE FOR INTERNAL USE ONLY

UNLESS OTHERWISE SPECIFIED, DIMENSIONS ARE IN INCHES AND TOLERANCES ARE: 2 PLACE DECIMAL      3 PLACE DECIMAL      ANGLES ±.015 (0,381 mm)      ±.005 (0,127 mm)      ± 1°	MATERIAL	DRAWN C. McGRATH	DATE 1/5/04	TITLE SMA PLUG SOLDER TYPE .086 SEMI-RIGID			Amphenol RF Danbury, CT, USA Tainan, Taiwan Shenzhen, China www.amphenolrf.com		
		ENGINEER O. BARTHELMES	DATE 1/5/04						
		APPROVED ..	DATE ..						
	REFERENCE EAR 111-961386 3 615X-864-200 GEN# ASSYM37_SMA	CAD FILE I:\SMA\901-9723-10			CODE ID 74868	DWG SIZE B	DRAWING NO. 901-9723-10	REV E	
	NOTICE - These drawings, specifications, or other data (1) are, and remain the property of Amphenol Corp. (2) must be returned upon request; and (3) are confidential and not to be disclosed to any person other than those to whom they are given by Amphenol Corp. The furnishing of these drawings, specifications, or other data by Amphenol Corp., or to any other person to anyone for any purpose is not to be regarded by implication or otherwise in any manner licensing, granting rights or permitting such holder or any other person to manufacture, use or sell any product, process or design, patented or otherwise, that may in any way be related to or disclosed by said drawings, specifications, or other data.								