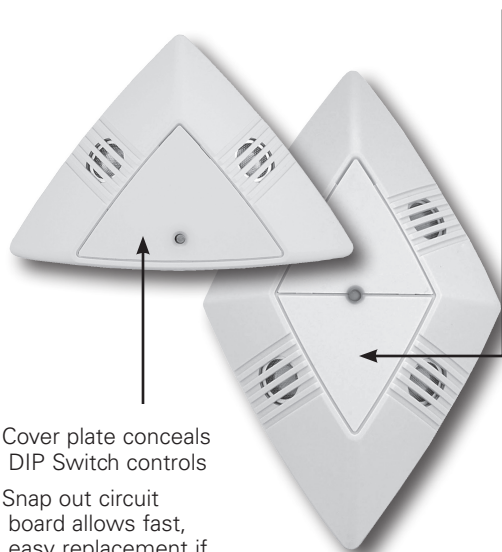


OMC-U – MicroSet Ultrasonic

Catalog#	Prepared by
Project	Date
Comments	Type

Teflon-insulated pigtails fire-rated for ceiling plenums
Crystal control ensures consistent, stable performance



Cover plate conceals
DIP Switch controls

Snap out circuit
board allows fast,
easy replacement if
necessary

Overview

The MicroSet Ultrasonic sensors automatically control lighting and other electrical loads based on the presence (or absence) of people. The sensors produce a low-intensity, inaudible sound that detects changes in acoustic waves caused by motion such as walking into a room, reaching for a telephone or turning a swivel chair. The sensors do not respond to audible sound. When motion is detected, the relay in the connected Greengate Switchpack is closed and lights are turned ON. If no motion occurs within a pre-set period of time, lights are turned OFF.

Manual override switch turns lights ON in case of sensor malfunction.

Features


- No adjustment necessary at installation
- Continuous, real-time, self-adjusting sensitivity and time delay
- Complete no-gap coverage
- Ideal for spaces needing increased sensitivity to minor motion detection
- Manual ON/OFF feature when wired to a normally open momentary pushbutton (Greengate Model# AML Switch)
- Products tested to NEMA WD 7 - 2011 Occupancy Motion Sensors Standard



EATON

Powering Business Worldwide

Specifications

Technology	Ultrasonic (US)
Power Requirements	10-30 VDC from Greengate Switchpack or Greengate system. Maximum current needed is 25mA per sensor
Output	Open collector output to switch up to ten Greengate Switchpacks Isolated Form C Relay in (-R) models. Isolated Form C Relay Ratings: 1A 30 VDC/VAC
Time Delays	Self-adjustable from 10 min. to 30 min.
Available Frequencies	32 kHz
Operating Environment	Temperature: 60° F - 80° F (15° C - 26° C) Relative humidity: Less than 95%, non-condensing For indoor use only
Housing	Medium impact injection molded housing. ABS resin complies with UL 94V0. Paintable off-white.
Size	OMC-U-1001, OMC-U-0501: 3-1/4"D x 4-3/4"W x 1"H (82.6mm x 110.2mm x 25.4mm) OMC-U-2000: 3-3/4"D x 6"W x 1"H (95.25mm x 152.4mm x 25.4mm) *All BAS models are the same size
LED Indicators	Amber LED: OMC-U-0501 only Blue LED: All other sensor
Standards	UL Listed 

Operation

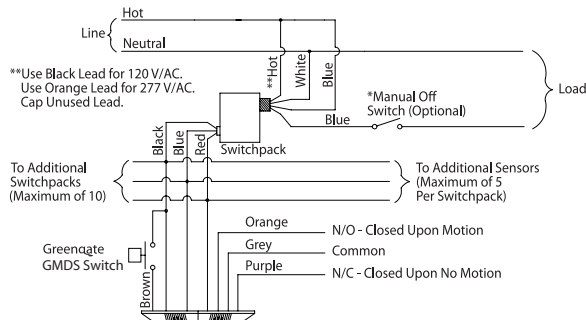
The MicroSet breakthrough technology accurately ignores sources of continuous noise by self-adjusting which creates the first truly "wire and walk away" occupancy sensor. Its wide selection of interface options allows connection to virtually any Building Automation System for additional installation savings. MicroSet adaptive technology eliminates the need for adjustments and time delays.

Applications

- Conference rooms
- Public areas
- Large open spaces
- Corridors
- Restrooms
- Storage areas
- Partitioned work areas

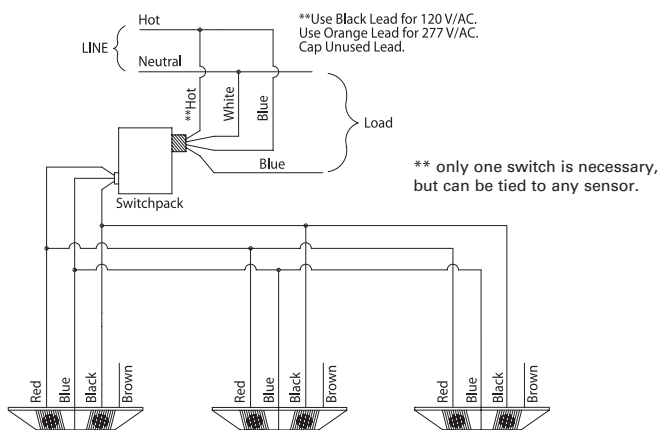
Wiring Diagrams

One Switchpack, One Sensor (-R Model)



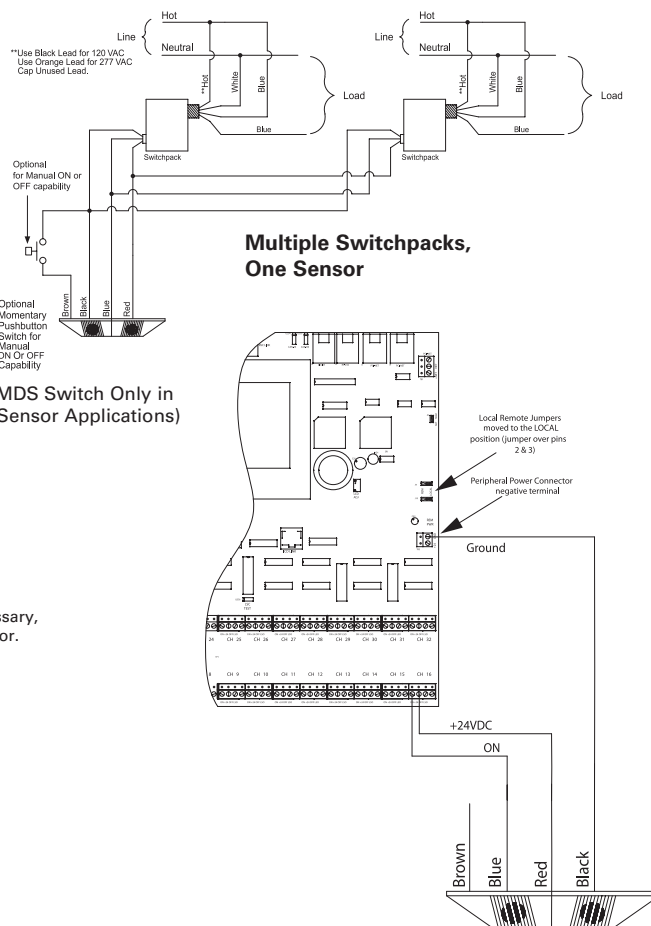
(Use GMDs Switch Only in Single Sensor Applications)

One Switchpack, Multiple Sensors



(Use GMDs Switch Only in Single Sensor Applications)

Multiple Switchpacks, One Sensor



Coverage

Minor Coverage
Major Coverage

Up to 500 sq. ft.

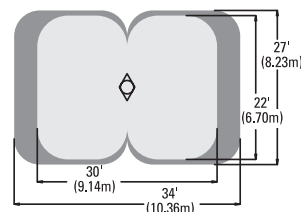
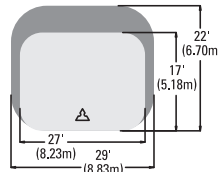
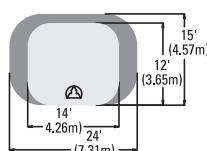
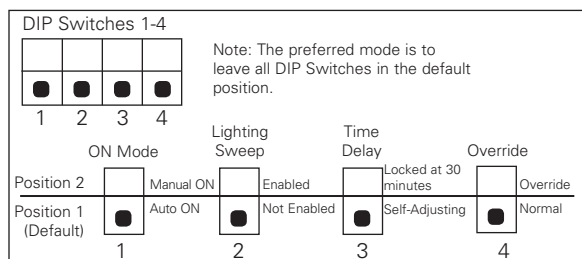
500 to 1,000 sq. ft.

1,000 to 2,000 sq. ft.

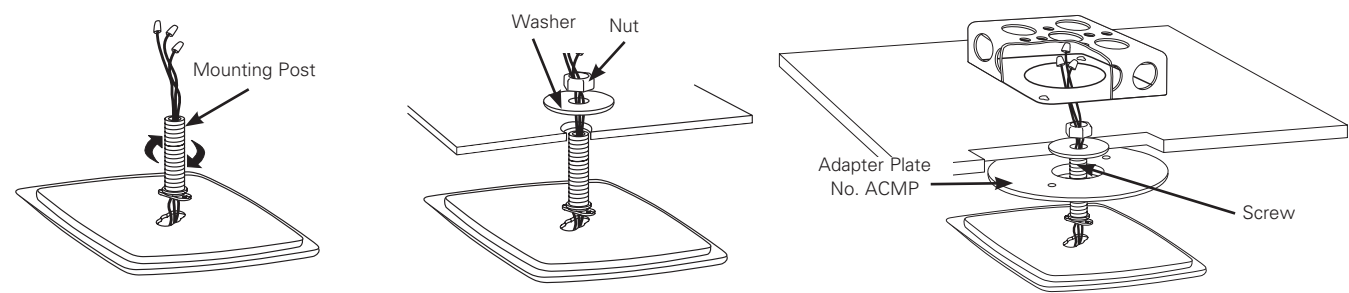
OMC-U-0501
OMC-U-0501-R

OMC-U-1001
OMC-U-1001-R

OMC-U-2000
OMC-U-2000-R



Mounting



Ordering

Catalog #	Recommended Room Size	Field of View
OMC-U-0501	300 - 700 sq.ft.	One Way (180°)
OMC-U-1001	Up to 500 sq.ft.	One Way (180°)
OMC-U-2000	1,000 - 2,000 sq.ft.	Two Way (360°)

Eaton
1000 Eaton Boulevard
Cleveland, OH 44122
United States
Eaton.com

Eaton's Cooper Controls Business
203 Cooper Circle
Peachtree City, GA 30269
coopercontrol.com

© 2014 Eaton
All Rights Reserved
Printed in USA
Publication No. ACC141036
December 3, 2014

Eaton is a registered trademark.
All other trademarks are property
of their respective owners.