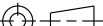


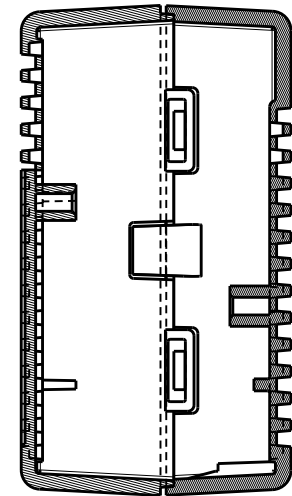
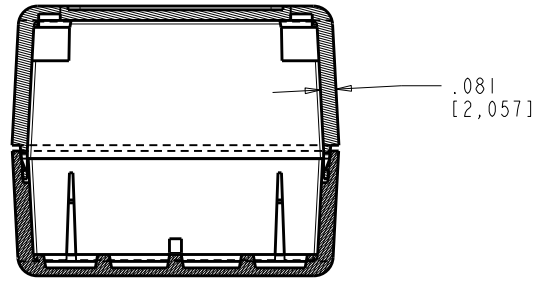
REVISION					
REV.	DRAWN BY	ECO No	DESCRIPTION	DATE	APPROVED
1	M BOYER		PRELIMINARY RELEASE	28-Feb-09	

#### NOTES: UNLESS OTHERWISE SPECIFIED

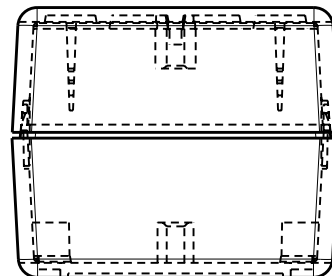
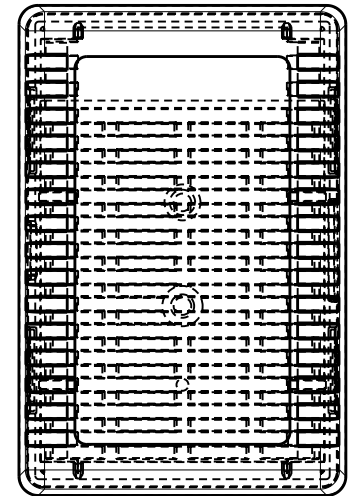
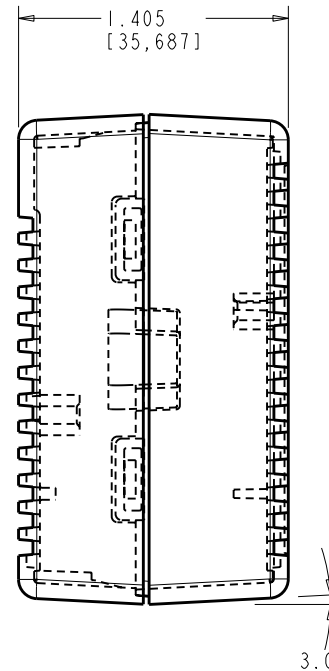
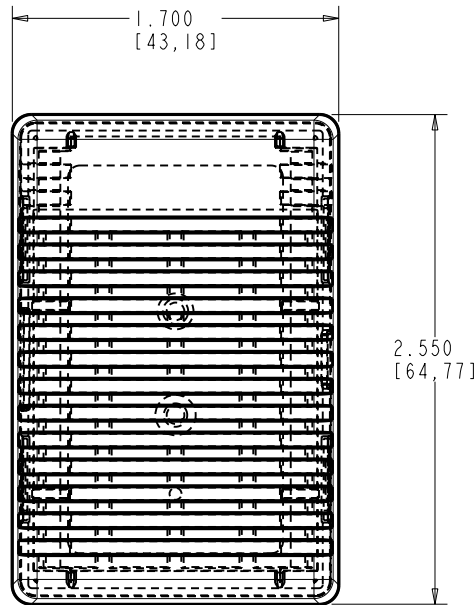
1. CORNERS DRAWN SHARP TO BE R.005 MAXIMUM.
2. EXTERIOR SURFACE TEXTURE TO BE LIGHT EDM FINISH. EQUIVELANT TO MT-11010.
3. INTERIOR SURFACE TEXTURE TO BE FINE MATTE FINISH.
4. ALL INSIDE RADII .010R. ALL OUTSIDE RADII .020R MAX, UNLESS OTHERWISE SPECIFIED.
5. ALL EXTERNAL DIMENSIONS AFFECTED BY THE DRAFT APPLY AT THE LARGE END OF THE FEATURE, AND ALL INTERNAL FEATURES AFFECTED BY THE DRAFT APPLY AT THE SMALL END OF THE FEATURE UNLESS OTHERWISE SPECIFIED.
6. 1 DEGREE DRAFT IN THE DIRECTION OF PULL IS PERMISSIBLE UNLESS OTHERWISE SPECIFIED.
7. MATERIAL / COLOR: ABS PLASTIC IS STANDARD IN BLACK OR WHITE. CUSTOM MATERIALS AND COLORS ARE AVAILABLE UPON REQUEST.
8. PCB SIZES ARE RECOMMENDATIONS ONLY. FINAL SIZES AND VERIFICATION OF IT'S FIT ARE THE SOLE RESPONSIBILITY OF EACH OWNER.
9. STANDARD OR CUSTOM LABEL RECESSES ARE AVAILABLE.
10. THIS ENCLOSURE IS A PRESS FIT ASSEMBLY. FOR PERMANENT CLOSURE: A DROP OF ADHESIVE OR ULTRASONIC WELDING IS REQUIRED.

THIRD ANGLE PROJECTION		TOLERANCES: UNLESS OTHERWISE SPECIFIED DIMENSIONS ARE IN U.S. INCHES: X.XX = .015    X.XXXX = .001 X.XXX = .010    X.X° = 1°		<b>NEW AGE ENCLOSURES</b>  a division of <b>ALLTEC Inc.</b> 4330 Santa Fe Road, Ste B    San Luis Obispo, CA. 93401 ph. (805) 595-1310    fax (805) 595-1024 <a href="http://www.newageenclosures.com">www.newageenclosures.com</a>				
 DO NOT SCALE DRAWING		<b>NEW AGE ENCLOSURES</b>						
<p>NOTICE: THE INFORMATION AND DATA CONTAINED HEREIN IS CONSIDERED PROPRIETARY TO ALLTEC INTEGRATED MFG INC &amp; SHALL REMAIN THE EXCLUSIVE PROPERTY OF ALLTEC INTEGRATED MFG INC. THE HOLDER WILL ASSUME CUSTODY AND CONTROL THAT THIS DOCUMENT WILL NOT BE COPIED, REPRODUCED, OR DISCLOSED WITHOUT THE EXPRESS WRITTEN CONSENT OF ALLTEC INTEGRATED MFG INC. POSSESSION OF THIS DOCUMENT DOES NOT CONSTITUTE A GRANT TO MANUFACTURE ANY ITEMS.</p> <p>© 2008</p>		<b>SEE NOTES</b>						
		APPROVAL	BY	DATE				
		CHECK						
		ENG.						
		SCALE	1.000 = 1.00"					
		DRAWN BY	28-Feb-09		SIZE	DRAWING NAME	SHEET	REV
M BOYER			A	251714_R1	1 OF 2	1		

SECTION B-B



SECTION A-A



TOLERANCES: UNLESS OTHERWISE SPECIFIED  
DIMENSIONS ARE IN U.S. INCHES.  
X.XX = .015 X.XXXX = .001  
X.XXX = .010 X.X° = 1°

NEW AGE ENCLOSURES

SEE NOTES

APPROVAL	BY	DATE
CHECK		
ENG.		
SCALE	1.000 = 1.00"	

DRAWN BY  
M BOYER 28-Feb-09

**NEW AGE ENCLOSURES**

a division of ALLTEC Inc.

4330 Santa Fe Road, Ste B San Luis Obispo, CA. 93401  
ph. (805) 595-1310 fax (805) 595-1024

[www.newageenclosures.com](http://www.newageenclosures.com)

**VENTED CASE  
PXX-251714 ASSEMBLY**

SIZE A	DRAWING NAME 251714_R1	SHEET 2 OF 2	REV 1
-----------	---------------------------	-----------------	----------

# Mouser Electronics

Authorized Distributor

Click to View Pricing, Inventory, Delivery & Lifecycle Information:

New Age Enclosures:

[P1A-251714](#) [P3A-251714](#)