

**Product number C11918\_STRADA-T-6X1-DNW**

Family	Strada-Module	FWHM	Asymmetric degrees
Type	Lens array	Efficiency	93 %
LED	Oslon Square PC	cd/Im	0.390
Color	Clear	Gerber File	Available
Diameter	119.8 x 25.2 mm		
Height	5.6 mm		
Style	Rectang		
Optic Material	PMMA		
Holder Material	-		
Fastening	Screw, pin, glue		
Status	On production		

**Product number C13140\_STRADA-T-6X1-DWC**

Family	Strada-Module	FWHM	Asymmetric degrees
Type	Lens array	Efficiency	96 %
LED	Oslon Square PC	cd/Im	0.600
Color	Clear	Gerber File	Available
Diameter	119.8 + 25.2 mm		
Height	5.6 mm		
Style	Rectang		
Optic Material	PMMA		
Holder Material	-		
Fastening	Screw, pin, glue		
Status	On production		

**Product number C13996\_STRADA-T-6X1-ME**

Family	Strada-Module	FWHM	asym degrees
Type	Lens	Efficiency	83 %
LED	Oslon Square PC	cd/Im	0.730
Color	Clear	Gerber File	Available
Diameter	119.8x25.2 mm		
Height	8.19 mm		Distance from PCB bottom to glass approximately 12mm.
Style	Rectang		
Optic Material	PMMA		
Holder Material	-		
Fastening	Screw, pin, glue		
Status	On production		

**NOTE: The typical divergence will be changed by different color, chip size and chip position tolerance. The typical total divergence is the full angle measured where the luminous intensity is half of the peak value.**



## PRODUCT DATASHEET Strada-Module series

last update 2/9/2014



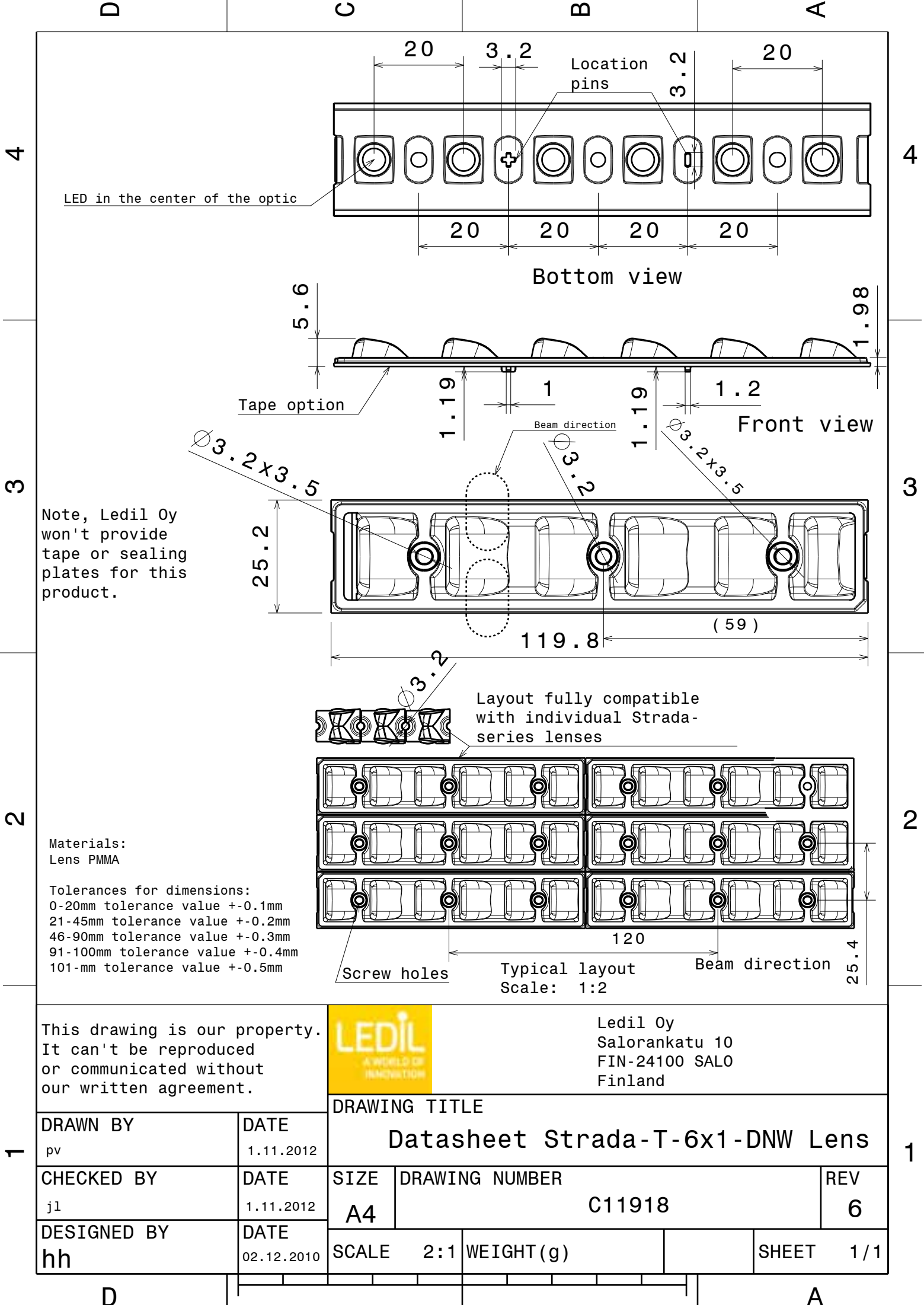
### GENERAL INFORMATION

- Product series especially designed & optimized for Oslon Square PC series of LEDs.
- Special care taken to make light distribution as uniform as possible.
- Lens material optical grade PMMA with high UV and temperature resistance. Allows use of high current and temperature conditions.

Please find more information about used material from below:

[http://ledil.fi/sites/default/files/Documents/Technical/Material/PMMA%20N%20UL94\\_Yellow%20Card.pdf](http://ledil.fi/sites/default/files/Documents/Technical/Material/PMMA%20N%20UL94_Yellow%20Card.pdf)

<http://ledil.fi/sites/default/files/Documents/Technical/Material/PMMA%20N%20PLEXIGLAS-Datasheet.pdf>



This drawing is our property.  
It can't be reproduced  
or communicated without  
our written agreement.

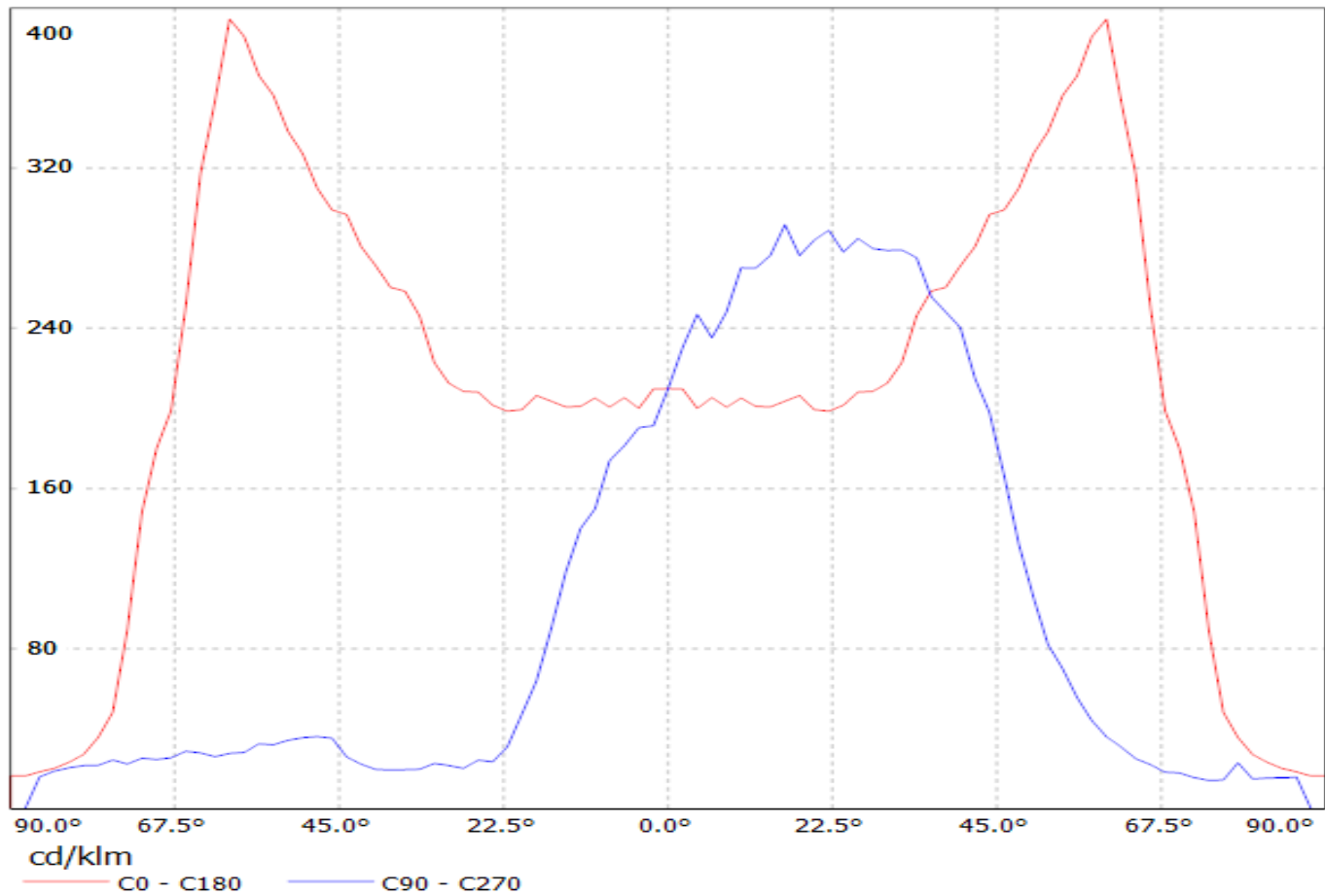


Ledil Oy  
Salorankatu 10  
FIN-24100 SALO  
Finland

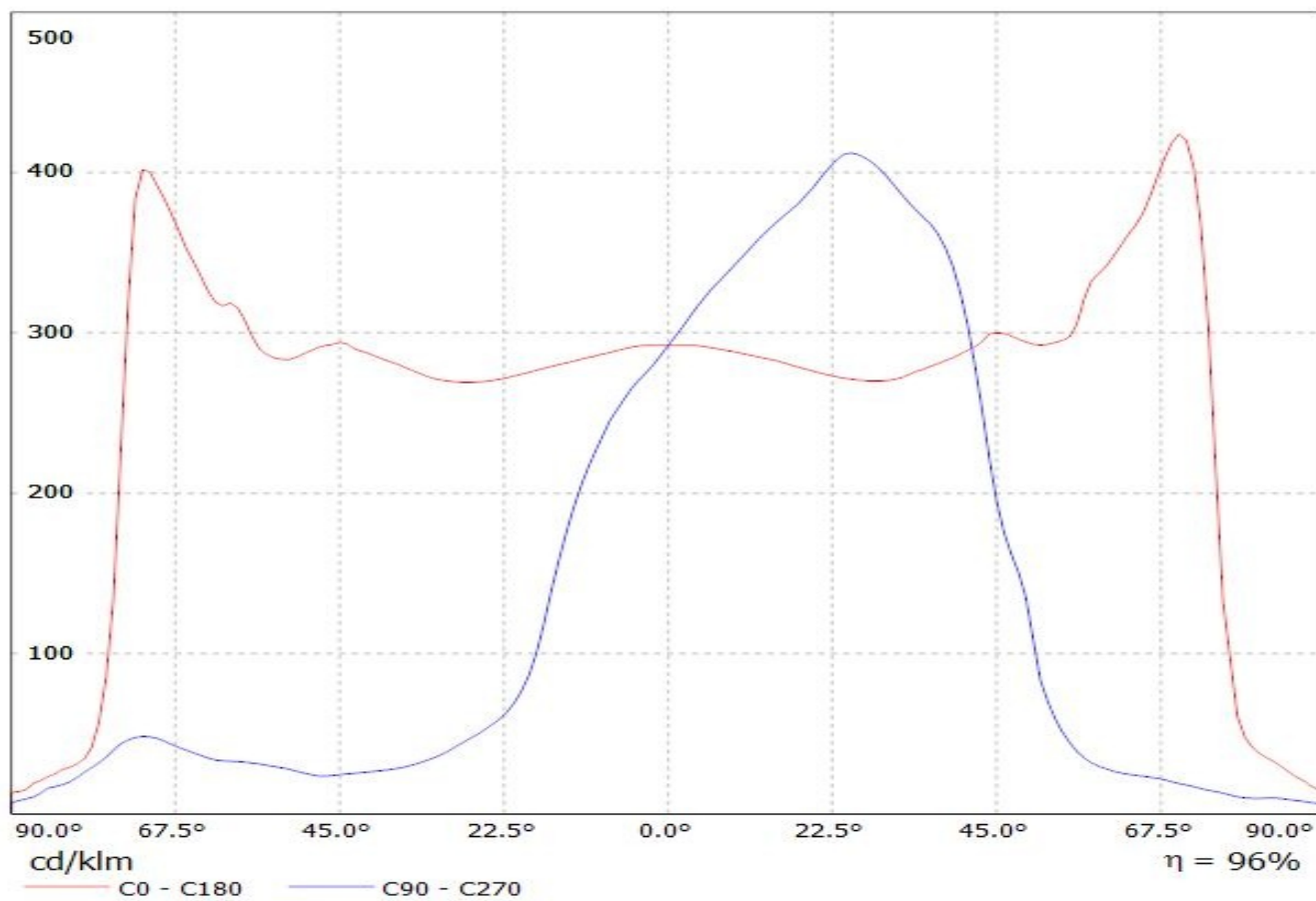
DRAWING TITLE			
Datasheet Strada-T-6x1-DNW Lens			
CHECKED BY	DATE	SIZE	DRAWING NUMBER
j1	1.11.2012	A4	C11918
DESIGNED BY	DATE	SCALE	WEIGHT (g)
hh	02.12.2010	2:1	
		SHEET	1 / 1

DRAWN BY	DATE
pv	1.11.2012
CHECKED BY	DATE
j1	1.11.2012
DESIGNED BY	DATE
hh	02.12.2010

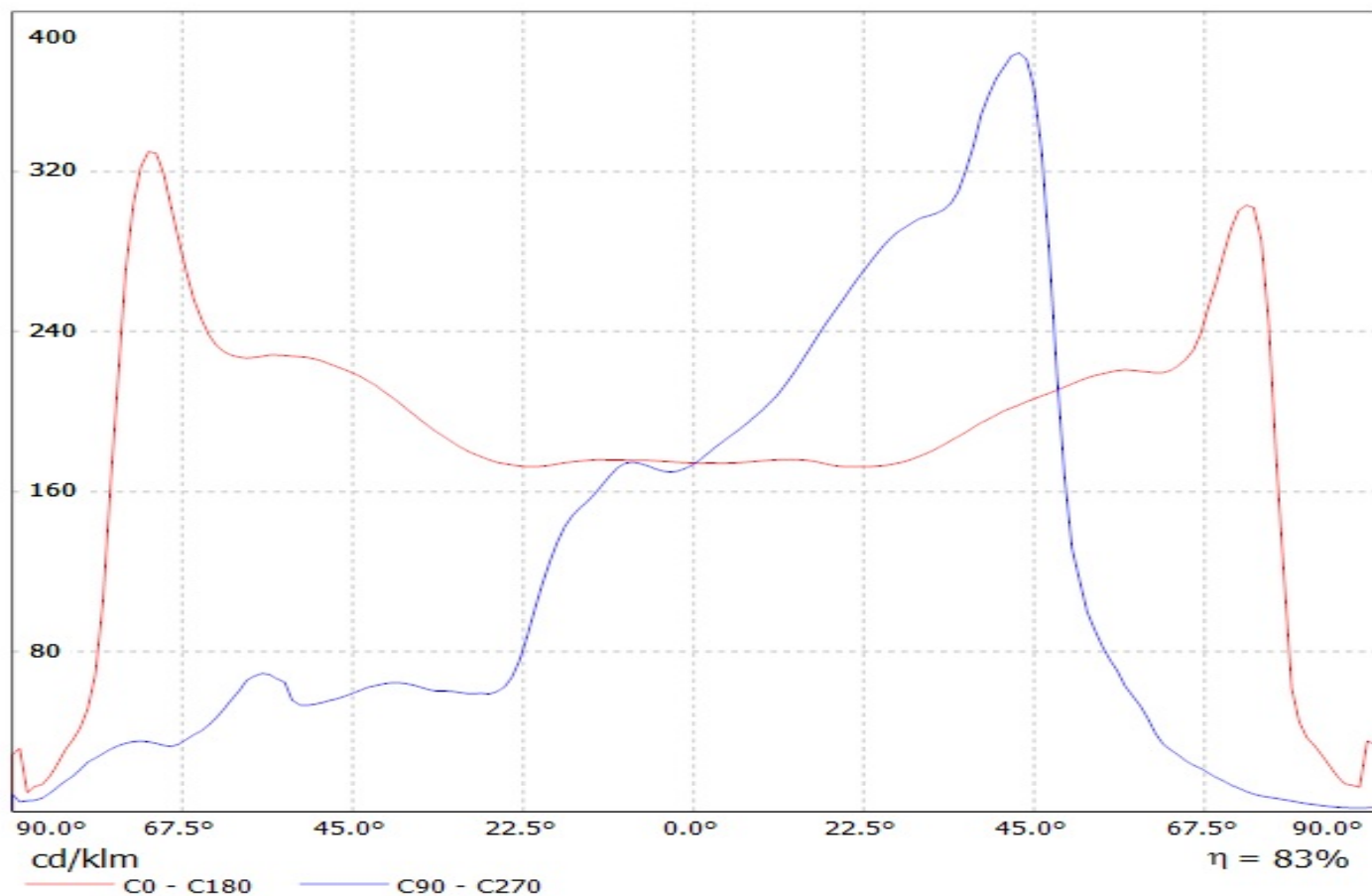
Luminaire: Ledil Oy C11918\_STRADA-T-6X1-DNW-SQ-PC LOR=93%  
Lamps: 1 x Osram Square PC 250mA 567lm



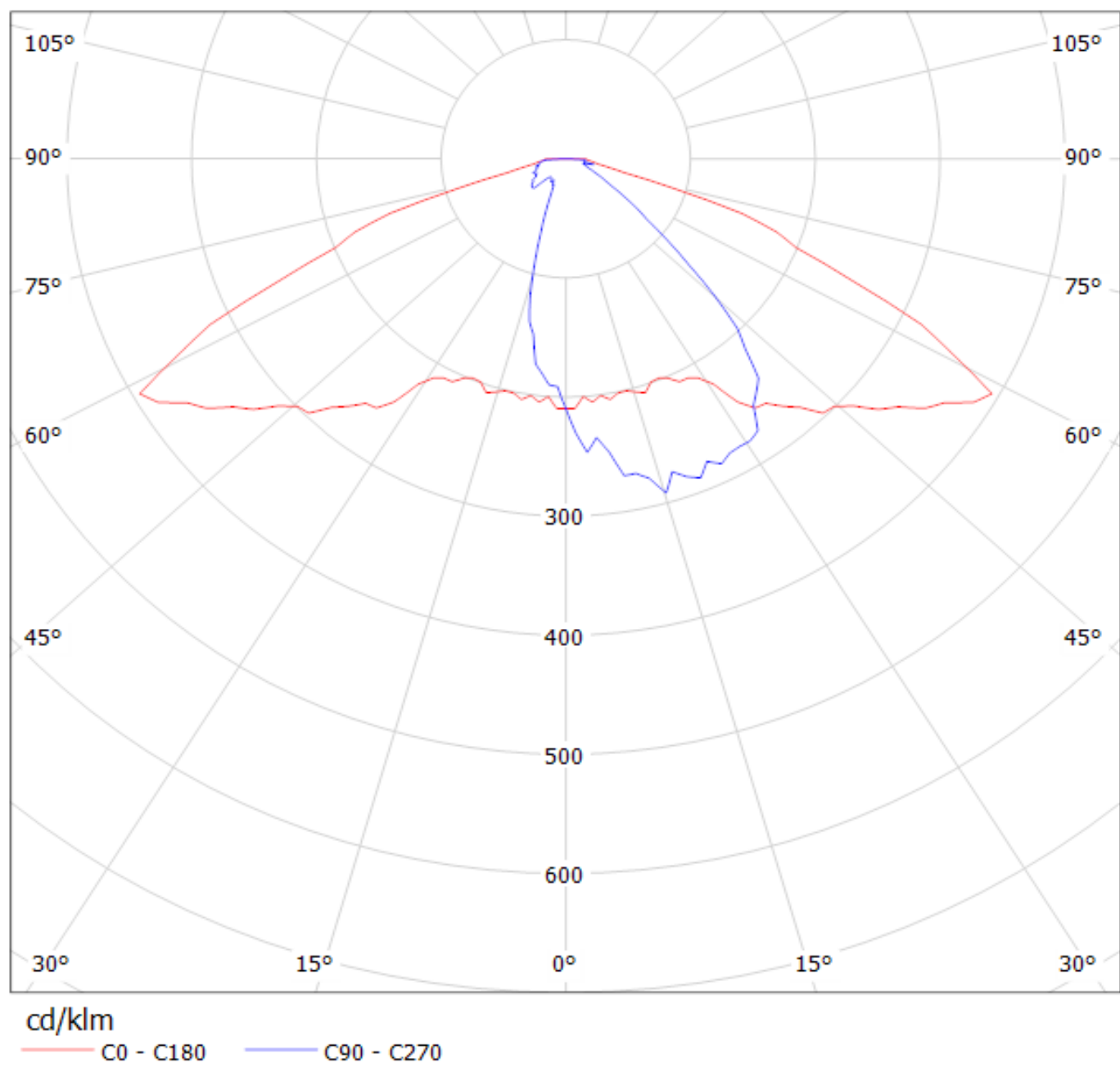
Luminaire: LEDiL Oy C13140\_STRADA-T-6X1-DWC\_(SQ-PC) Eff.95.8%  
Lamps: 1 x Osram Square PC (586.106lm@250mA)



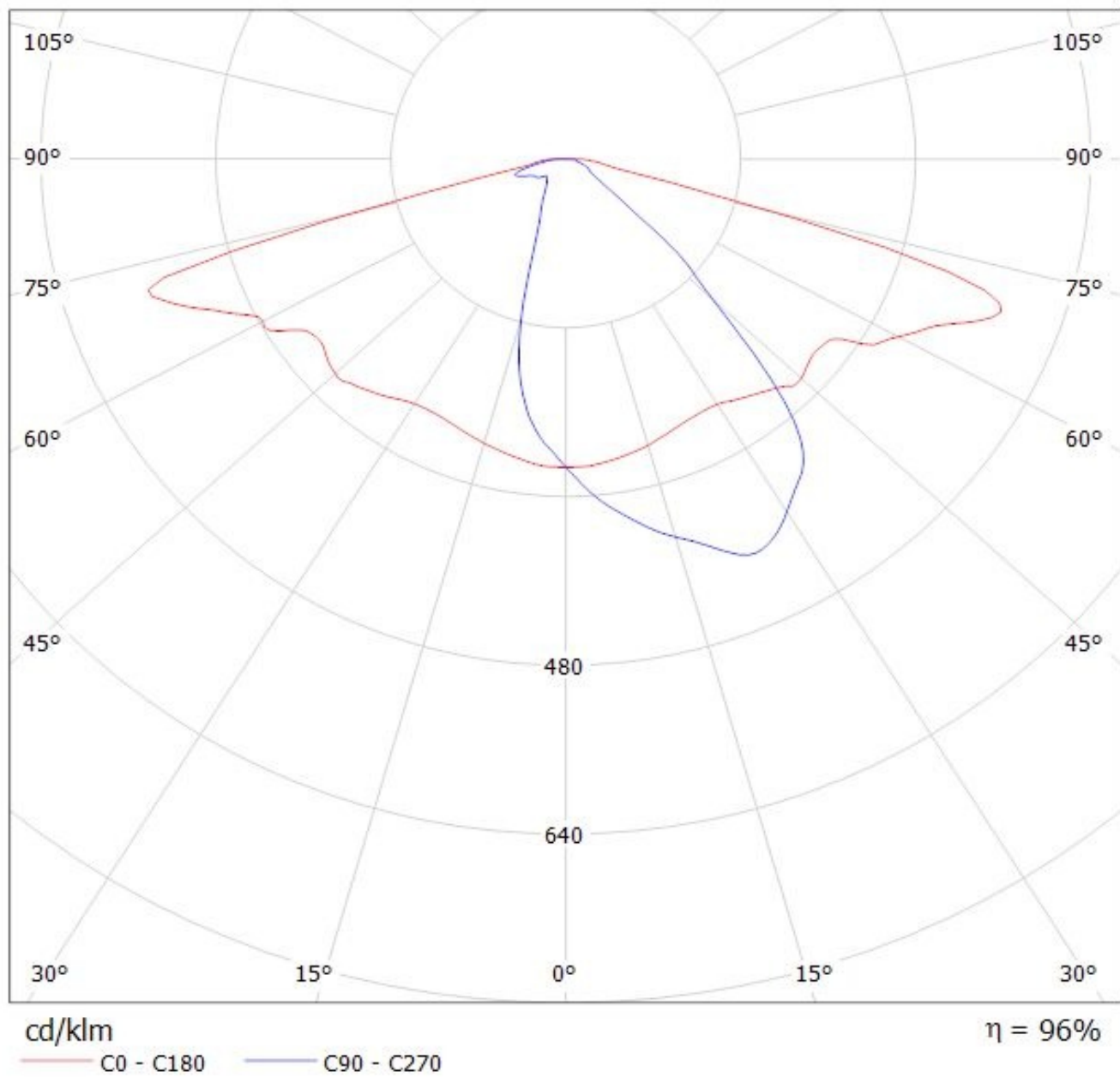
Luminaire: LEDiL Oy C13996\_STRADA-T-6X1-ME\_(Oslon\_Square\_PC)\_with\_glass  
Lamps: 1 x Osrom\_Oslon\_Square\_PC\_(6x1)\_584.229lm@250mA\_P=4.38299W\_l=0.2498A



Luminaire: Ledil Oy C11918\_STRADA-T-6X1-DNW-SQ-PC LOR=93%  
Lamps: 1 x Osram Square PC 250mA 567lm



Luminaire: LEDiL Oy C13140\_STRADA-T-6X1-DWC\_(SQ-PC) Eff.95.8%  
Lamps: 1 x Osram Square PC (586.106lm@250mA)





Luminaire: LEDiL Oy C13996\_STRADA-T-6X1-ME\_(Oslon\_Square\_PC)\_with\_glass  
Lamps: 1 x Osrom\_Oslon\_Square\_PC\_(6x1)\_584.229lm@250mA\_P=4.38299W\_I=0.2498A

