

# **TUSB8040**

## **USB 3.0 Four Port Hub**

# **Data Manual**



PRODUCTION DATA information is current as of publication date. Products conform to specifications per the terms of the Texas Instruments standard warranty. Production processing does not necessarily include testing of all parameters.

Literature Number: SLLSE42I  
September 2010—Revised September 2013

## Contents

|          |   |           |
|----------|---|-----------|
| <b>1</b> | <b>PRODUCT OVERVIEW</b>                 | <b>5</b>  |
| 1.1      | Features                                | 5         |
| 1.2      | Introduction                            | 6         |
| 1.3      | Functional Block Diagram                | 7         |
| <b>2</b> | <b>PIN DESCRIPTIONS</b>                 | <b>8</b>  |
| 2.1      | Clock and Reset Signals                 | 9         |
| 2.2      | USB Upstream Signals                    | 9         |
| 2.3      | USB Downstream Signals                  | 10        |
| 2.4      | I <sup>2</sup> C/SMBUS Signals          | 11        |
| 2.5      | Test and Miscellaneous Signals          | 11        |
| 2.6      | Power Signals                           | 12        |
| <b>3</b> | <b>FUNCTIONAL DESCRIPTION</b>           | <b>13</b> |
| 3.1      | I <sup>2</sup> C EEPROM Operation       | 13        |
| 3.2      | SMBus Slave Operation                   | 13        |
| 3.3      | Configuration Registers                 | 14        |
| 3.3.1    | ROM Signature Register                  | 14        |
| 3.3.2    | Vendor ID LSB Register                  | 14        |
| 3.3.3    | Vendor ID MSB Register                  | 14        |
| 3.3.4    | Product ID LSB Register                 | 15        |
| 3.3.5    | Product ID MSB Register                 | 15        |
| 3.3.6    | Device Configuration Register           | 15        |
| 3.3.7    | Battery Charging Support Register       | 16        |
| 3.3.8    | Device Removable Configuration Register | 17        |
| 3.3.9    | Port Used Configuration Register        | 17        |
| 3.3.10   | Language ID LSB Register                | 18        |
| 3.3.11   | Language ID MSB Register                | 18        |
| 3.3.12   | Serial Number String Length Register    | 18        |
| 3.3.13   | Manufacturer String Length Register     | 19        |
| 3.3.14   | Product String Length Register          | 19        |
| 3.3.15   | Serial Number Registers                 | 19        |
| 3.3.16   | Manufacturer String Registers           | 20        |
| 3.3.17   | Product String Registers                | 20        |
| 3.3.18   | Device Status and Command Register      | 20        |
| <b>4</b> | <b>CLOCK GENERATION</b>                 | <b>21</b> |
| 4.1      | Crystal Requirements                    | 21        |
| 4.2      | Input Clock Requirements                | 21        |
| <b>5</b> | <b>POWER UP AND RESET</b>               | <b>22</b> |
| <b>6</b> | <b>ELECTRICAL SPECIFICATIONS</b>        | <b>23</b> |
| 6.1      | ABSOLUTE MAXIMUM RATINGS                | 23        |
| 6.2      | RECOMMENDED OPERATING CONDITIONS        | 23        |
| 6.3      | THERMAL INFORMATION                     | 24        |
| 6.4      | 3.3-V I/O ELECTRICAL CHARACTERISTICS    | 25        |
| 6.5      | HUB INPUT SUPPLY CURRENT                | 26        |

## List of Figures

|     |  |                    |
|-----|--|--------------------|
| 1-1 | Typical Application .....                  | <a href="#">6</a>  |
| 1-2 | TUSB8040PFP Functional Block Diagram ..... | <a href="#">7</a>  |
| 4-1 | TUSB8040 Clock .....                       | <a href="#">21</a> |

## List of Tables

|      |  |                    |
|------|--|--------------------|
| 2-1  | Clock and Reset Signals.....                                     | <a href="#">9</a>  |
| 2-2  | USB Upstream Signals.....  | <a href="#">9</a>  |
| 2-3  | USB Downstream Signals.....                                      | <a href="#">10</a> |
| 2-4  | I <sup>2</sup> C/SMBUS Signals .....                             | <a href="#">11</a> |
| 2-5  | Test and Miscellaneous Signals.....                              | <a href="#">11</a> |
| 2-6  | Power Signals .....  | <a href="#">12</a> |
| 3-1  | TUSB8040 Register Map.....                                       | <a href="#">13</a> |
| 3-2  | Register Offset 0h .....   | <a href="#">14</a> |
| 3-3  | Bit Descriptions – ROM Signature Register .....                  | <a href="#">14</a> |
| 3-4  | Register Offset 1h .....   | <a href="#">14</a> |
| 3-5  | Bit Descriptions – Vendor ID LSB Register .....                  | <a href="#">14</a> |
| 3-6  | Register Offset 2h .....   | <a href="#">14</a> |
| 3-7  | Bit Descriptions – Vendor ID MSB Register .....                  | <a href="#">14</a> |
| 3-8  | Register Offset 3h .....   | <a href="#">15</a> |
| 3-9  | Bit Descriptions – Product ID MSB Register .....                 | <a href="#">15</a> |
| 3-10 | Register Offset 4h .....   | <a href="#">15</a> |
| 3-11 | Bit Descriptions – Product ID MSB Register .....                 | <a href="#">15</a> |
| 3-12 | Register Offset 5h .....   | <a href="#">15</a> |
| 3-13 | Bit Descriptions – Device Configuration Register .....           | <a href="#">15</a> |
| 3-14 | Register Offset 6h .....   | <a href="#">16</a> |
| 3-15 | Bit Descriptions – Battery Charging Support Register .....       | <a href="#">16</a> |
| 3-16 | Register Offset 7h .....   | <a href="#">17</a> |
| 3-17 | Bit Descriptions – Device Removable Configuration Register ..... | <a href="#">17</a> |
| 3-18 | Register Offset 8h .....   | <a href="#">17</a> |
| 3-19 | Bit Descriptions – Port Used Configuration Register .....        | <a href="#">17</a> |
| 3-20 | Register Offset 20h .....  | <a href="#">18</a> |
| 3-21 | Bit Descriptions – Language ID LSB Register .....                | <a href="#">18</a> |
| 3-22 | Register Offset 21h .....  | <a href="#">18</a> |
| 3-23 | Bit Descriptions – Language ID LSB Register .....                | <a href="#">18</a> |
| 3-24 | Register Offset 22h .....  | <a href="#">18</a> |
| 3-25 | Bit Descriptions – Serial Number String Length Register .....    | <a href="#">18</a> |
| 3-26 | Register Offset 23h .....  | <a href="#">19</a> |
| 3-27 | Bit Descriptions – Manufacturer String Length Register .....     | <a href="#">19</a> |
| 3-28 | Register Offset 24h .....  | <a href="#">19</a> |
| 3-29 | Bit Descriptions – Product String Length Register .....          | <a href="#">19</a> |
| 3-30 | Register Offset 30h-4Fh .....                                    | <a href="#">19</a> |
| 3-31 | Bit Descriptions – Serial Number Byte N Register .....           | <a href="#">19</a> |
| 3-32 | Register Offset 50h-8Fh .....                                    | <a href="#">20</a> |
| 3-33 | Bit Descriptions – Manufacturer String Register .....            | <a href="#">20</a> |
| 3-34 | Register Offset 90h-CFh .....                                    | <a href="#">20</a> |
| 3-35 | Bit Descriptions – Product String Register .....                 | <a href="#">20</a> |
| 3-36 | Register Offset F8h .....  | <a href="#">20</a> |
| 3-37 | Bit Descriptions – Device Status and Command Register .....      | <a href="#">20</a> |

## USB 3.0 Four Port Hub

Check for Samples: [TUSB8040](#)

### 1 PRODUCT OVERVIEW

#### 1.1 Features

- **USB 3.0 Compliant Four Port Hub, TID# 330000003**
  - Upstream Port Supports SuperSpeed, High-Speed and Full-Speed Connections
  - Each of the Four Downstream Ports Support SuperSpeed, High-Speed, Full-Speed/Low-Speed Connections
- **USB 2.0 Hub Features**
  - Multi Transaction Translator (MTT) Hub: Four Transaction Translators, One Per Port
  - Four (Over USB Required Minimum of Two) Asynchronous Endpoint Buffers Per Transaction Translator for Better Throughput
- **Supports Charging Downstream Port (CDP) Applications**
  - Battery Charging 1.2 Compliant
- **Supports Operation as a USB 3.0 or USB 2.0 Compound Device**
- **Supports Per Port or Ganged Power Switching and Over-Current Protection**
- **Provides the following status outputs:**
  - High-Speed Upstream Connection
  - High-Speed Upstream Port Suspended
  - SuperSpeed Upstream Connection
  - SuperSpeed Upstream Port Suspended
- **Optional Serial EEPROM or SMBus Slave Interface for Custom Configurations:**
  - VID/PID
  - Manufacturer and Product Strings
  - Serial Number
- **Using Pin Selection or the EEPROM/SMBus Slave Interface, Each Downstream Port Can Be Independently:**
  - Enabled or Disabled
  - Marked as Removable or Permanently Attached (for Compound Applications)
  - Have Battery Charging Enabled or Disabled
- **Provides 128-Bit Universally Unique Identifier (UUID)**
- **Optionally Supports USB 2.0 Compliant Port Indicator LEDs**
- **Configurable SMBus Address to Support Multiple Devices on the Same SMBus Segment**
- **Supports On-Board and In-System EEPROM Programming Via the USB 2.0 Upstream Port**
- **Single Clock Input, 24-MHz Crystal or Oscillator**
- **No Special Driver Requirements; Works Seamlessly With Any Operating System With USB Stack Support**



Please be aware that an important notice concerning availability, standard warranty, and use in critical applications of Texas Instruments semiconductor products and disclaimers thereto appears at the end of this data sheet.

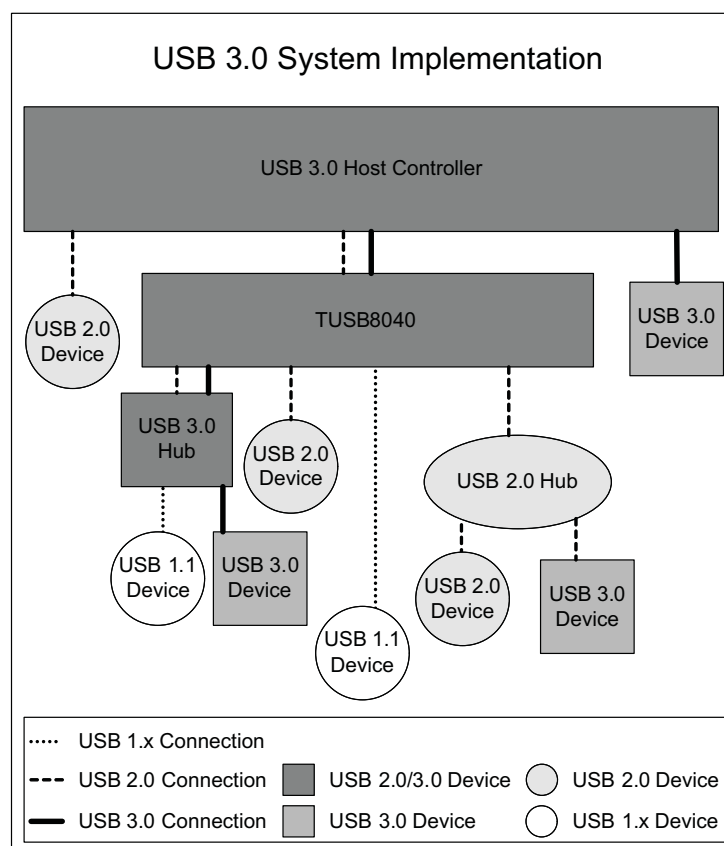
## 1.2 Introduction

The TUSB8040 is USB 3.0 compliant hub available in an 80-pin QFP package. The device is designed for operation over the commercial temperature range of 0°C to 70°C.

The TUSB8040 provides simultaneous SuperSpeed and high-speed/full-speed connections on the upstream port and provides SuperSpeed, high-speed, full-speed, or low-speed connections on the downstream ports. When the upstream port is connected to an electrical environment that only supports high-speed or full-speed/low-speed connections, SuperSpeed connectivity is disabled on the downstream ports. When the upstream port is connected to an electrical environment that only supports full-speed/low-speed connections, SuperSpeed and high-speed connectivity are disabled on the downstream ports.

The TUSB8040 supports up to four downstream ports. It may be configured to report one to four downstream ports by pin selection or an attached EEPROM or SMBus controller. The configuration options provide the ability to scale the device by application.

A typical system view of the TUSB8040 is shown in [Figure 1-1](#).



**Figure 1-1. Typical Application**

### 1.3 Functional Block Diagram

The TUSB8040PFP (QFP) is a reduced footprint hub that supports ganged power switching and over-current protection only. A ganged hub switches on power to all its downstream ports when power is required to be on for any port. The power to the downstream ports is not switched off unless all ports are in a state that allows power to be removed. Also when a ganged hub senses an over-current event, power to all downstream ports will be switched off. The TUSB8040PFP also provides customization using an I<sup>2</sup>C EEPROM or configuration via an SMBus host for vendor specific PID, VID, and strings. Ports can also be marked as disabled or permanently attached using an I<sup>2</sup>C EEPROM or an SMBus host.

The Device Status and Command Register at F8h cannot be modified by the contents of the I<sup>2</sup>C EEPROM.

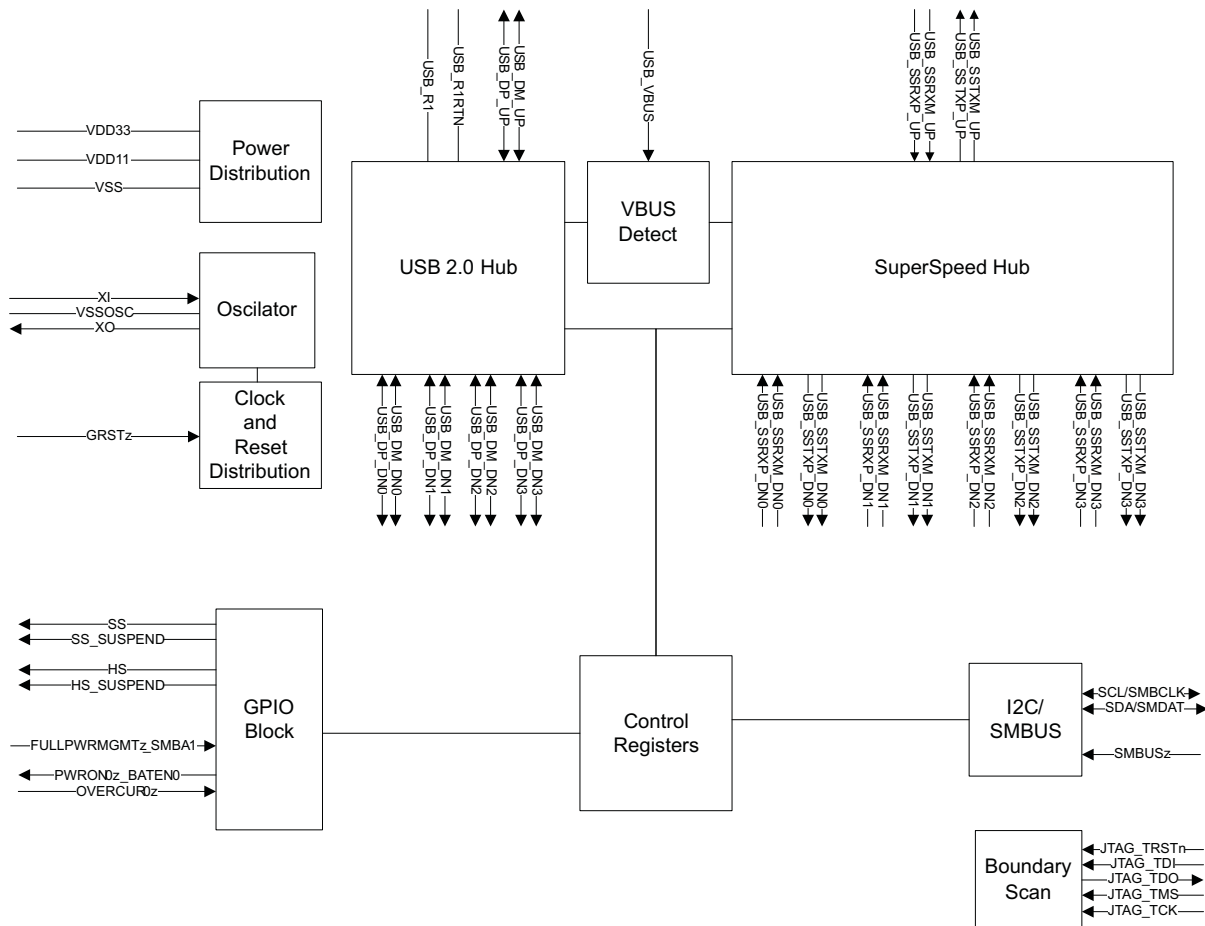
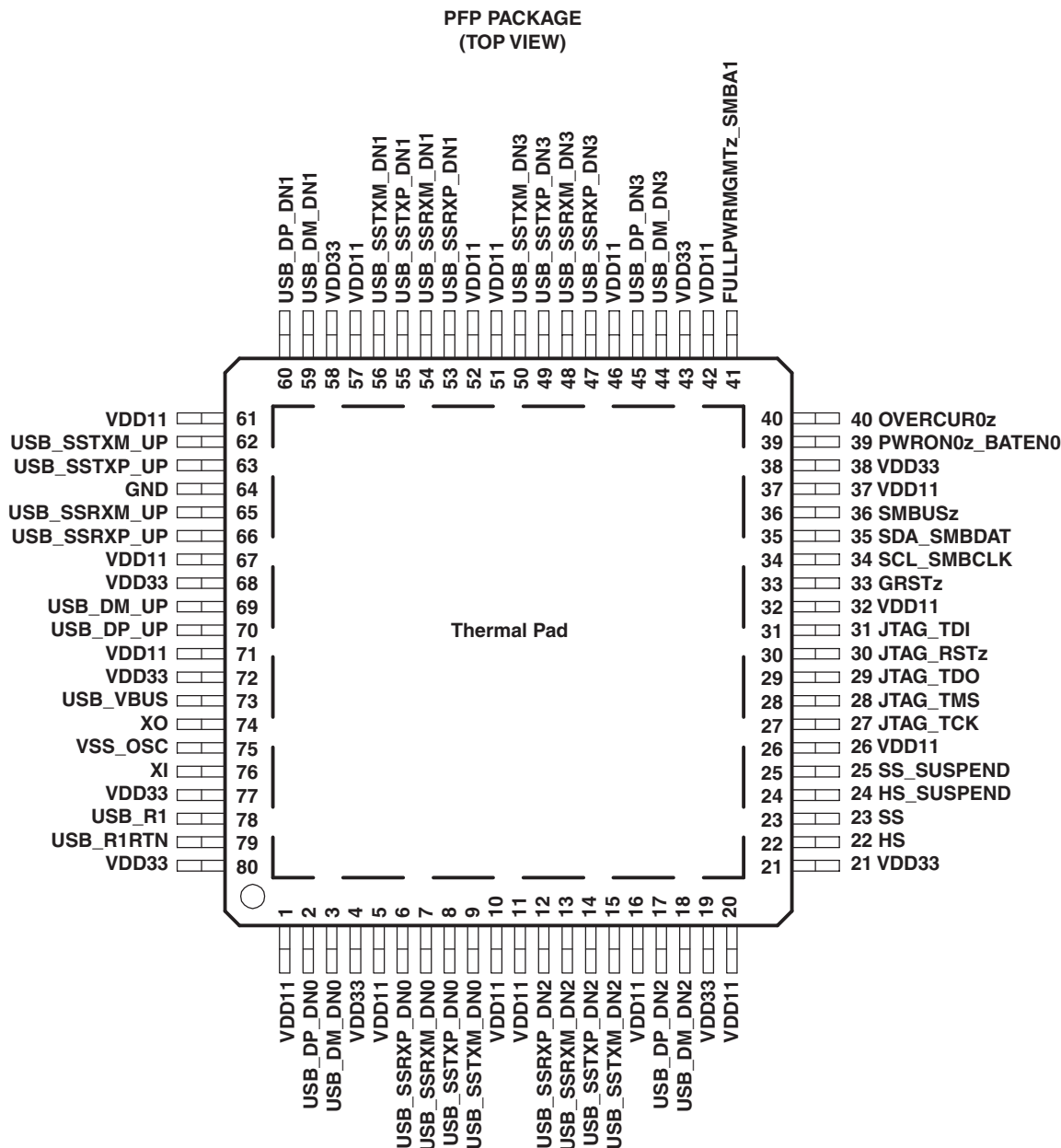


Figure 1-2. TUSB8040PFP Functional Block Diagram

## 2 PIN DESCRIPTIONS



| TYPE   | DESCRIPTION                |
|--------|----------------------------|
| I      | Input                      |
| O      | Output                     |
| I/O    | Input/output               |
| PD, PU | Internal pull-down/pull-up |
| PT     | Passive pass through       |
| P      | Power Supply               |
| G      | Ground                     |

## 2.1 Clock and Reset Signals

**Table 2-1. Clock and Reset Signals**

| SIGNAL NAME | TYPE  | PIN NO. | DESCRIPTION   |
|-------------|-------|---------|---|
| GRSTz       | I, PU | 33      | Global power reset. This reset brings all of the TUSB8040 internal registers to their default states. When GRSTz is asserted, the device is completely nonfunctional. GRSTz should be asserted a minimum of 3 ms after all power rails are valid at the device. |
| XI          | I     | 76      | Crystal input. This terminal is the crystal input for the internal oscillator. The input may alternately be driven by the output of an external oscillator. When using a crystal a 1-M $\Omega$ feedback resistor is required between XI and XO.                |
| XO          | O     | 74      | Crystal output. This terminal is crystal output for the internal oscillator. If XI is driven by an external oscillator this pin may be left unconnected. When using a crystal a 1-M $\Omega$ feedback resistor is required between XI and XO.                   |
| VSSOSC      | I     | 75      | Oscillator return. If using a crystal, the load capacitors should use this signal as the return path and it should not be connected to the PCB ground. If using an oscillator, this terminal should be connected to PCB Ground.                                 |

## 2.2 USB Upstream Signals

**Table 2-2. USB Upstream Signals**

| SIGNAL NAME  | TYPE | PIN NO. | DESCRIPTION  |
|--------------|------|---------|--|
| USB_SSTXP_UP | O    | 63      | USB SuperSpeed transmitter differential pair (positive)  |
| USB_SSTXM_UP | O    | 62      | USB SuperSpeed transmitter differential pair (negative)  |
| USB_SSRXP_UP | I    | 66      | USB SuperSpeed receiver differential pair (positive)   |
| USB_SSRXM_UP | I    | 65      | USB SuperSpeed receiver differential pair (negative)   |
| USB_DP_UP    | I/O  | 70      | USB high-speed differential transceiver (positive)   |
| USB_DM_UP    | I/O  | 69      | USB high-speed differential transceiver (negative)   |
| USB_R1       | PT   | 78      | Precision resistor reference. A 9.09-K $\Omega$ $\pm$ 1% resistor should be connected between USB_R1 and USB_R1RTN.  |
| USB_R1RTN    | PT   | 79      | Precision resistor reference return  |
| USB_VBUS     | I    | 73      | USB Upstream port power monitor. The USB_VBUS input is a 1.2-V I/O cell and requires a voltage divider to prevent damage to the input. The signal USB_VBUS must be connected to VBUS through a 90.9-k $\Omega$ $\pm$ 1% resistor, and to signal ground through a 10-k $\Omega$ $\pm$ 1% resistor. This allows the input to detect VBUS present from a minimum of 4 V and sustain a maximum VBUS voltage up to 10 V (applied to the voltage divider). |

## 2.3 USB Downstream Signals

**Table 2-3. USB Downstream Signals**

| SIGNAL NAME    | TYPE    | PIN NO. | DESCRIPTION  |
|----------------|---------|---------|--|
| USB_SSTXP_DN0  | O       | 8       | USB SuperSpeed transmitter differential pair (positive)  |
| USB_SSTXM_DN0  | O       | 9       | USB SuperSpeed transmitter differential pair (negative)  |
| USB_SSRXP_DN0  | I       | 6       | USB SuperSpeed receiver differential pair (positive)   |
| USB_SSRXM_DN0  | I       | 7       | USB SuperSpeed receiver differential pair (negative)   |
| USB_DP_DN0     | I/O     | 2       | USB high-speed differential transceiver (positive)   |
| USB_DM_DN0     | I/O     | 3       | USB high-speed differential transceiver (negative)   |
| PWRON0z_BATEN0 | I/O, PD | 39      | <p>USB port power on control for downstream power/battery charging enable. The terminal is used for control of the downstream power switch; in addition, the value of the terminal is sampled at the de-assertion of reset to determine the value of the battery charger support for the port as indicated in the Battery Charger Support register:</p> <p>0 = Battery charging not supported<br/>1 = Battery charging supported</p> <p>The TUSB8040PFP only supports ganged mode. This terminal provides the port power control for all downstream ports. This terminal also determines the battery charging support of all downstream ports.</p> |
| OVERCUR0z      | I, PU   | 40      | <p>USB downstream port over-current detection. The TUSB8040PFP only supports ganged mode. This terminal receives the over-current indication for all downstream ports.</p> <p>0 = An overcurrent event has occurred<br/>1 = An overcurrent event has not occurred</p> <p>This terminal should be pulled high using a 10-kΩ resistor if power management is not implemented. If power management is enabled, the external circuitry needed should be determined by the power management device.</p>   |
| USB_SSTXP_DN1  | O       | 55      | USB SuperSpeed transmitter differential pair (positive)  |
| USB_SSTXM_DN1  | O       | 56      | USB SuperSpeed transmitter differential pair (negative)  |
| USB_SSRXP_DN1  | I       | 53      | USB SuperSpeed receiver differential pair (positive)   |
| USB_SSRXM_DN1  | I       | 54      | USB SuperSpeed receiver differential pair (negative)   |
| USB_DP_DN1     | I/O     | 60      | USB High-speed differential transceiver (positive)   |
| USB_DM_DN1     | I/O     | 59      | USB High-speed differential transceiver (negative)   |
| USB_SSTXP_DN2  | O       | 14      | USB SuperSpeed transmitter differential pair (positive)  |
| USB_SSTXM_DN2  | O       | 15      | USB SuperSpeed transmitter differential pair (negative)  |
| USB_SSRXP_DN2  | I       | 12      | USB SuperSpeed receiver differential pair (positive)   |
| USB_SSRXM_DN2  | I       | 13      | USB SuperSpeed receiver differential pair (negative)   |
| USB_DP_DN2     | I/O     | 17      | USB High-speed differential transceiver (positive)   |
| USB_DM_DN2     | I/O     | 18      | USB High-speed differential transceiver (negative)   |
| USB_SSTXP_DN3  | O       | 49      | USB SuperSpeed transmitter differential pair (positive)  |
| USB_SSTXM_DN3  | O       | 50      | USB SuperSpeed transmitter differential pair (negative)  |
| USB_SSRXP_DN3  | I       | 47      | USB SuperSpeed receiver differential pair (positive)   |
| USB_SSRXM_DN3  | I       | 48      | USB SuperSpeed receiver differential pair (negative)   |
| USB_DP_DN3     | I/O     | 45      | USB High-speed differential transceiver (positive)   |
| USB_DM_DN3     | I/O     | 44      | USB High-speed differential transceiver (negative)   |

## 2.4 I<sup>2</sup>C/SMBUS Signals

**Table 2-4. I<sup>2</sup>C/SMBUS Signals**

| SIGNAL NAME | TYPE    | PIN NO. | DESCRIPTION  |
|-------------|---------|---------|--|
| SCL/SMBCLK  | I/O, PD | 34      | I <sup>2</sup> C clock/SMBus clock. Function of terminal depends on the setting of the SMBUSz input.<br>When SMBUSz = 1, this terminal acts as the serial clock interface for an I <sup>2</sup> C EEPROM.<br>When SMBUSz = 0, this terminal acts as the serial clock interface for an SMBus host.<br>Can be left unconnected if external interface not implemented.  |
| SDA/SMBDAT  | I/O, PD | 35      | I <sup>2</sup> C data/SMBus data. Function of terminal depends on the setting of the SMBUSz input.<br>When SMBUSz = 1, this terminal acts as the serial data interface for an I <sup>2</sup> C EEPROM.<br>When SMBUSz = 0, this terminal acts as the serial data interface for an SMBus host.<br>The SDA_SMBDAT terminal is sampled at the deassertion of reset to determine if SuperSpeed USB low power states U1 and U2 are disabled. If SDA_SMBDAT is high, U1 and U2 low power states are disabled. If SDA_SMBDAT is low, U1 and U2 low power states are enabled.<br>If the optional EEPROM or SMBUS is implemented, the value of the u1u2Disable bit of the Device Configuration Register determines if the low power states U1 and U2 are enabled.<br>Can be left unconnected if external interface not implemented and U1 and U2 are to be enabled. |
| SMBUSz      | I, PU   | 36      | I <sup>2</sup> C/SMBus mode select.<br>1 = I <sup>2</sup> C Mode Selected<br>0 = SMBus Mode Selected<br>Can be left unconnected if external interface not implemented.   |

## 2.5 Test and Miscellaneous Signals

**Table 2-5. Test and Miscellaneous Signals**

| SIGNAL NAME | TYPE    | PIN NO. | DESCRIPTION  |
|-------------|---------|---------|--|
| JTAG_TCK    | I/O, PD | 27      | JTAG test clock. Can be left unconnected.  |
| JTAG_TDI    | I/O, PU | 31      | JTAG test data in. Can be left unconnected.  |
| JTAG_TDO    | I/O, PD | 29      | JTAG test data out. Can be left unconnected.   |
| JTAG_TMS    | I/O, PU | 28      | JTAG test mode select. Can be left unconnected.  |
| JTAG_RSTz   | I/O, PD | 30      | JTAG reset. Pull down using an external 1-KΩ resistor for normal operation.  |
| HS_SUSPEND  | O       | 24      | High-speed suspend status output.<br>0 = High-speed upstream port not suspended<br>1 = High-speed upstream port suspended<br>Can be left unconnected.  |
| SS_SUSPEND  | O       | 25      | SuperSpeed suspend status output.<br>0 = SuperSpeed upstream port not suspended<br>1 = SuperSpeed upstream port suspended<br>Can be left unconnected.  |
| HS          | O       | 22      | High-speed status. The terminal is to indicate the connection status of the upstream port as documented below:<br>0 = Hub in low/full speed mode<br>1 = Hub in high-speed mode<br>Can be left unconnected. |
| SS          | O       | 23      | SuperSpeed status. The terminal is to indicate the connection status of the upstream port as documented below:<br>0 = Hub not in SuperSpeed mode<br>1 = Hub in SuperSpeed mode<br>Can be left unconnected. |

**Table 2-5. Test and Miscellaneous Signals (continued)**

| SIGNAL NAME            | TYPE  | PIN NO. | DESCRIPTION   |
|------------------------|-------|---------|---|
| FULLPWRMGMTz_S<br>MBA1 | I, PU | 41      | <p>Full power management enable/SMBus address bit 1.</p> <p>The value of the terminal is sampled at the de-assertion of reset to set the power switch control follows:</p> <p>0 = Full power management supported</p> <p>1 = Full Power management not supported</p> <p>Full power management is the ability to control power to the downstream ports of the TUSB8040 using the PWRON0z_BATEN0 terminal. When SMBus mode is enabled using SMBUSz, this terminal sets the value of the SMBus slave address bit 1. SMBus slave address bits 2 and 3 are always 1 for the TUSB8040.</p> <p>Can be left unconnected if full power management and SMBus are not implemented.</p> |

## 2.6 Power Signals

**Table 2-6. Power Signals**

| SIGNAL NAME | TYPE | PIN NO.   | DESCRIPTION       |
|-------------|------|---|-------------------|
| VDD33       | P    | 4, 19, 21,<br>38, 43, 58<br>68, 72, 77,<br>80                                   | 3.3-V power rail  |
| VDD11       | P    | 1, 5, 10,<br>11, 16, 20,<br>26, 32, 37,<br>42, 46, 51,<br>52, 57, 61,<br>67, 71 | 1.1-V power rail  |
| GND         | G    | 64, 81  | Ground, Power Pad |

### 3 FUNCTIONAL DESCRIPTION

**Table 3-1. TUSB8040 Register Map**

| BYTE ADDRESS | CONTENTS                                |
|--------------|---|
| 00h          | ROM Signature (55h)                     |
| 01h          | Vendor ID LSB                           |
| 02h          | Vendor ID MSB                           |
| 03h          | Product ID LSB                          |
| 04h          | Product ID MSB                          |
| 05h          | Device Configuration Register           |
| 06h          | Battery Charging Support Register       |
| 07h          | Device Removable Configuration Register |
| 08h          | Port Used Configuration Register        |
| 09h-0Fh      | Reserved                                |
| 10h-1Fh      | Reserved                                |
| 20h-21h      | LangID Byte [1:0]                       |
| 22h          | Serial Number String Length             |
| 23h          | Manufacturer String Length              |
| 24h          | Product String Length                   |
| 25h-2Fh      | Reserved                                |
| 30h-4Fh      | Serial Number String Byte [31:0]        |
| 50h-8Fh      | Manufacturer String Byte [63:0]         |
| 90h-CFh      | Product String Byte [63:0]              |
| D0-F7h       | Reserved                                |
| F8h          | Device Status and Command Register      |
| F9-FFh       | Reserved                                |

#### 3.1 I<sup>2</sup>C EEPROM Operation

The TUSB8040 supports a single-master, standard mode (100 Kbit/s) connection to a dedicated I<sup>2</sup>C EEPROM when the I<sup>2</sup>C interface mode is enabled. In I<sup>2</sup>C mode, the TUSB8040 reads the contents of the EEPROM at bus address 1010000b using 7-bit addressing starting at address 0. If the value of the EEPROM contents at byte 00h equals 55h, the TUSB8040 loads the configuration registers according to the EEPROM map. If the first byte is not 55h, the TUSB8040 exits the I<sup>2</sup>C mode and continues execution with the default values in the configuration registers. The hub will not connect on the upstream port until the configuration is completed.

Note, the bytes located below offset 9h are optional. The requirement for data in those addresses is dependent on the options configured in the Device Configuration and Phy Custom Configuration registers.

For details on I<sup>2</sup>C operation refer to the UM10204 I<sup>2</sup>C-bus Specification and User Manual.

#### 3.2 SMBus Slave Operation

When the SMBus interface mode is enabled, the TUSB8040 supports read block and write block protocols as a slave-only SMBus device.

The supported slave address of 1000 11xy for the TUSB8040PFP is:

- x is the state of FULLPWRMGMTz\_SMBA1 at reset, and
- y indicates read (logic 1) or write (logic 0) access.

If the TUSB8040 is addressed by a host using an unsupported protocol it will not respond. The TUSB8040 will wait indefinitely for configuration by the SMBus host and will not connect on the upstream port until the SMBus host indicates configuration is complete by clearing the CFG\_ACTIVE bit.

For details on SMBus requirements refer to the System Management Bus Specification.

### 3.3 Configuration Registers

The internal configuration registers are accessed on byte boundaries. The configuration register values are loaded with defaults but can be over-written when the TUSB8040 is in I<sup>2</sup>C or SMBus mode.

#### 3.3.1 ROM Signature Register

**Table 3-2. Register Offset 0h**

| BIT NO.     | 7 | 6 | 5 | 4 | 3 | 2 | 1 | 0 |
|-------------|---|---|---|---|---|---|---|---|
| RESET STATE | 0 | 0 | 0 | 0 | 0 | 0 | 0 | 0 |

**Table 3-3. Bit Descriptions – ROM Signature Register**

| BIT | FIELD NAME   | ACCESS | DESCRIPTION   |
|-----|--------------|--------|---|
| 7:0 | romSignature | RW     | ROM Signature Register. This register is used by the TUSB8040 in I <sup>2</sup> C mode to validate the attached EEPROM has been programmed. The first byte of the EEPROM is compared to the mask 55h and if not a match, the TUSB8040 aborts the EEPROM load and executes with the register defaults. |

#### 3.3.2 Vendor ID LSB Register

**Table 3-4. Register Offset 1h**

| BIT NO.     | 7 | 6 | 5 | 4 | 3 | 2 | 1 | 0 |
|-------------|---|---|---|---|---|---|---|---|
| RESET STATE | 0 | 1 | 0 | 1 | 0 | 0 | 0 | 1 |

**Table 3-5. Bit Descriptions – Vendor ID LSB Register**

| BIT | FIELD NAME  | ACCESS | DESCRIPTION   |
|-----|-------------|--------|---|
| 7:0 | vendorIdLsb | RW     | Vendor ID LSB. Least significant byte of the unique vendor ID assigned by the USB-IF; the default value of this register is 51h representing the LSB of the TI Vendor ID 0451h. The value may be over-written to indicate a customer Vendor ID. |

#### 3.3.3 Vendor ID MSB Register

**Table 3-6. Register Offset 2h**

| BIT NO.     | 7 | 6 | 5 | 4 | 3 | 2 | 1 | 0 |
|-------------|---|---|---|---|---|---|---|---|
| RESET STATE | 0 | 0 | 0 | 0 | 0 | 1 | 0 | 0 |

**Table 3-7. Bit Descriptions – Vendor ID MSB Register**

| BIT | FIELD NAME  | ACCESS | DESCRIPTION  |
|-----|-------------|--------|--|
| 7:0 | vendorIdMsb | RW     | Vendor ID MSB. Most significant byte of the unique vendor ID assigned by the USB-IF; the default value of this register is 04h representing the MSB of the TI Vendor ID 0451h. The value may be over-written to indicate a customer Vendor ID. |

### 3.3.4 Product ID LSB Register

**Table 3-8. Register Offset 3h**

| BIT NO.     | 7 | 6 | 5 | 4 | 3 | 2 | 1 | 0 |
|-------------|---|---|---|---|---|---|---|---|
| RESET STATE | 0 | 0 | 0 | 0 | 0 | 1 | 0 | 0 |

**Table 3-9. Bit Descriptions – Product ID MSB Register**

| BIT | FIELD NAME   | ACCESS | DESCRIPTION  |
|-----|--------------|--------|--|
| 7:0 | productIdLsb | RW     | Product ID LSB. Least significant byte of the product ID assigned by Texas Instruments; the default value of this register is 40h representing the LSB of the product ID assigned by Texas Instruments. The value of this register will be reported as configured for the SuperSpeed Device descriptor. The USB 2.0 Device descriptor will report the value in this register with bit [1] toggled. This ensures that the USB drivers load properly for both hubs. The value may be over-written to indicate a customer product ID. |

### 3.3.5 Product ID MSB Register

**Table 3-10. Register Offset 4h**

| BIT NO.     | 7 | 6 | 5 | 4 | 3 | 2 | 1 | 0 |
|-------------|---|---|---|---|---|---|---|---|
| RESET STATE | 1 | 0 | 0 | 0 | 0 | 0 | 0 | 0 |

**Table 3-11. Bit Descriptions – Product ID MSB Register**

| BIT | FIELD NAME   | ACCESS | DESCRIPTION   |
|-----|--------------|--------|---|
| 7:0 | productIdMsb | RW     | Product ID MSB. Most significant byte of the product ID assigned by Texas Instruments; the default value of this register is 80h representing the MSB of the product ID assigned by Texas Instruments. The value may be over-written to indicate a customer product ID. |

### 3.3.6 Device Configuration Register

**Table 3-12. Register Offset 5h**

| BIT NO.     | 7 | 6 | 5 | 4 | 3 | 2 | 1 | 0 |
|-------------|---|---|---|---|---|---|---|---|
| RESET STATE | 0 | 0 | 0 | X | X | X | X | X |

**Table 3-13. Bit Descriptions – Device Configuration Register**

| BIT | FIELD NAME    | ACCESS | DESCRIPTION  |
|-----|---------------|--------|--|
| 7   | customStrings | RW     | Custom Strings enable.<br>When this bit is set to 1 and the TUSB8040 is in I <sup>2</sup> C mode, the Manufacturer String Length, Manufacturer String, Product String Length, Product String, and Language ID registers are loaded from the contents of the EEPROM.<br>When the value of this bit is 1 and the TUSB8040 is in SMBUS mode, the Manufacturer String Length, Manufacturer String, Product String Length, Product String, and Language ID registers may be written by an SMBus host. |
| 6   | customSernum  | RW     | Custom Serial Number Enable.<br>When the TUSB8040 is in I <sup>2</sup> C mode, the TUSB8040 loads the serial number register from the contents of the EEPROM.<br>When the TUSB8040 is in SMBUS mode, the Serial Number registers may be written by an SMBus host.<br>This bit is always 1.   |

**Table 3-13. Bit Descriptions – Device Configuration Register (continued)**

| BIT | FIELD NAME   | ACCESS | DESCRIPTION  |
|-----|--------------|--------|--|
| 5   | u1u2Disable  | RW     | <p>U1 U2 Disable</p> <p>When this bit is set, the TUSB8040 will not initiate or accept any U1 or U2 requests on any port, upstream or downstream, unless it receives or sends a Force_LinkPM_Accept LMP command. After receiving or sending a FLPMA LMP command, the TUSB8040 will continue to enable U1 or U2 until it gets a power on reset or is disconnected on its upstream port.</p> <p>This bit is loaded at the deassertion of reset with the value of the SDA_SMDAT terminal. When the TUSB8040 is in I<sup>2</sup>C mode, the TUSB8040 loads this bit from the contents of the EEPROM.</p> <p>When the TUSB8040 is in SMBUS mode, the value may be over-written by a SMBUS host.</p> |
| 4   | portIndz     | RW     | <p>Port Indicator Status.</p> <p>For the TUSB8040PFP: This bit shall be 1. It shall not be over-written by EEPROM or an SMBus host.</p> <p>When the TUSB8040 is in I<sup>2</sup>C mode, the TUSB8040 loads this bit from the contents of the EEPROM.</p> <p>When the TUSB8040 is in SMBUS mode, the value may be overwritten by an SMBus host.</p>   |
| 3   | ganged       | RW     | <p>Ganged. This bit is always 1.</p> <p>For the TUSB8040PFP: This bit shall be 1. It shall not be over-written by EEPROM or an SMBus host.</p> <p>When the TUSB8040 is in I<sup>2</sup>C mode, the TUSB8040 loads this bit from the contents of the EEPROM.</p> <p>When the TUSB8040 is in SMBUS mode, the value may be overwritten by an SMBus host.</p>  |
| 2   | fullPwrMgmtz | RW     | <p>Full Power Management. This bit is loaded at the de-assertion of reset with the value of the FULLPWRMGMTz_SMBA1 terminal.</p> <p>When the TUSB8040 is in I<sup>2</sup>C mode, the TUSB8040 loads this bit from the contents of the EEPROM.</p> <p>When the TUSB8040 is in SMBUS mode, the value may be over-written by an SMBus host.</p>   |
| 1:0 | RSVD         | RO     | Reserved. This field is reserved and returns 0 when read.  |

### 3.3.7 Battery Charging Support Register

**Table 3-14. Register Offset 6h**

| BIT NO.     | 7 | 6 | 5 | 4 | 3 | 2 | 1 | 0 |
|-------------|---|---|---|---|---|---|---|---|
| RESET STATE | 0 | 0 | 0 | 0 | X | X | X | X |

**Table 3-15. Bit Descriptions – Battery Charging Support Register**

| BIT | FIELD NAME | ACCESS | DESCRIPTION  |
|-----|------------|--------|--|
| 7:4 | RSVD       | RO     | Reserved. Read only, returns 0 when read.  |
| 3:0 | batEn[3:0] | RW     | <p>Battery Charger Support. The bits in this field indicate whether the downstream port implements the charging port features. A value of 0 indicates the port does not implement the charging port features. A value of 1 indicates the port does support the charging port features.</p> <p>Each bit corresponds directly to a downstream port, i.e. batEn0 corresponds to downstream port 0.</p> <p>When in I<sup>2</sup>C/SMBus mode the bits in this field corresponding to the enabled ports per used[3:0] may be over-written by EEPROM contents or by an SMBus host.</p> <p>For the TUSB8040PFP:</p> <p>The default value for these bits are loaded at the de-assertion of reset with the value of the PWRON0z_BATEN0:</p> <p>Four-port hub - batEn[3:0] defaults to wxyzb, where w, x, y and z are all the value of PWRON0z_BATEN0.</p> |

### 3.3.8 Device Removable Configuration Register

**Table 3-16. Register Offset 7h**

| BIT NO.     | 7 | 6 | 5 | 4 | 3 | 2 | 1 | 0 |
|-------------|---|---|---|---|---|---|---|---|
| RESET STATE | 0 | 0 | 0 | 0 | 0 | 0 | 0 | 0 |

**Table 3-17. Bit Descriptions – Device Removable Configuration Register**

| BIT | FIELD NAME | ACCESS | DESCRIPTION  |
|-----|------------|--------|--|
| 7:4 | RSVD       | RO     | Reserved. Read only, returns 0 when read.  |
| 3:0 | rmb[3:0]   | RW     | Removable. The bits in this field indicate whether a device attached to downstream ports 3 through 0 are removable or permanently attached. A value of 0 indicates the device attached to the port is not removable. A value of 1 indicates the device attached to the port is removable.<br>Each bit corresponds directly to a downstream port, i.e. rmb[0] corresponds to downstream port 0.<br>For the TUSB8040PFP:<br>The default value for these bits are loaded at the de-assertion of reset with the value of Four-port hub - rmb[3:0] defaults to 1111b.<br>When in I <sup>2</sup> C/SMBus mode the bits in this field corresponding to the enabled ports per rmb[3:0] may be over-written by EEPROM contents or by an SMBus host. |

### 3.3.9 Port Used Configuration Register

**Table 3-18. Register Offset 8h**

| BIT NO.     | 7 | 6 | 5 | 4 | 3 | 2 | 1 | 0 |
|-------------|---|---|---|---|---|---|---|---|
| RESET STATE | 0 | 0 | 0 | 0 | 0 | 0 | 0 | 0 |

**Table 3-19. Bit Descriptions – Port Used Configuration Register**

| BIT | FIELD NAME | ACCESS | DESCRIPTION   |
|-----|------------|--------|---|
| 7:4 | RSVD       | RO     | Reserved. Read only, returns 0 when read.   |
| 3:0 | used[3:0]  | RW     | Used. The bits in this field indicate whether downstream ports 3 through 0 are enabled or disabled for use. A value of 0 indicates the port is not used. A value of 1 indicates the port is used.<br>Each bit corresponds directly to a downstream port, i.e. used[0] corresponds to downstream port 0.<br>For the TUSB8040PFP:<br>The default value for these bits are loaded at the de-assertion of reset with the value of Four-port hub - used[3:0] defaults to 1111b.<br>When in I <sup>2</sup> C/SMBus mode the bits in this field corresponding to the enabled ports per used[3:0] may be over-written by EEPROM contents or by an SMBus host. |

### 3.3.10 Language ID LSB Register

**Table 3-20. Register Offset 20h**

| BIT NO.     | 7 | 6 | 5 | 4 | 3 | 2 | 1 | 0 |
|-------------|---|---|---|---|---|---|---|---|
| RESET STATE | 0 | 0 | 0 | 0 | 1 | 0 | 0 | 1 |

**Table 3-21. Bit Descriptions – Language ID LSB Register**

| BIT | FIELD NAME | ACCESS | DESCRIPTION  |
|-----|------------|--------|--|
| 7:0 | langIdLsb  | RW     | Language ID least significant byte. This register contains the value returned in the LSB of the LANGID code in string index 0. The TUSB8040 only supports one language ID. The default value of this register is 09h representing the LSB of the LangID 0409h indicating English United States. When customStrings is 1, this field may be over-written by the contents of an attached EEPROM or by an SMBus host. |

### 3.3.11 Language ID MSB Register

**Table 3-22. Register Offset 21h**

| BIT NO.     | 7 | 6 | 5 | 4 | 3 | 2 | 1 | 0 |
|-------------|---|---|---|---|---|---|---|---|
| RESET STATE | 0 | 0 | 0 | 0 | 0 | 1 | 0 | 0 |

**Table 3-23. Bit Descriptions – Language ID MSB Register**

| BIT | FIELD NAME | ACCESS | DESCRIPTION   |
|-----|------------|--------|---|
| 7:0 | langIdMsb  | RW     | Language ID most significant byte. This register contains the value returned in the MSB of the LANGID code in string index 0. The TUSB8040 only supports one language ID. The default value of this register is 04h representing the MSB of the LangID 0409h indicating English United States. When customStrings is 1, this field may be over-written by the contents of an attached EEPROM or by an SMBus host. |

### 3.3.12 Serial Number String Length Register

**Table 3-24. Register Offset 22h**

| BIT NO.     | 7 | 6 | 5 | 4 | 3 | 2 | 1 | 0 |
|-------------|---|---|---|---|---|---|---|---|
| RESET STATE | 0 | 0 | 0 | 1 | 1 | 0 | 0 | 0 |

**Table 3-25. Bit Descriptions – Serial Number String Length Register**

| BIT | FIELD NAME         | ACCESS | DESCRIPTION  |
|-----|--------------------|--------|--|
| 7:6 | RSVD               | RO     | Reserved. Read only, returns 0 when read.  |
| 5:0 | serNumStringLength | RW     | Serial number string length. The string length in bytes for the serial number string. The default value is 0, indicating that a serial number string is not supported. The maximum string length is 32 bytes.<br>This field may be over-written by the contents of an attached EEPROM or by an SMBus host.<br>When the field is non-zero, a serial number string of serNumStringLength bytes is returned at string index 1 from the data contained in the Serial Number String registers. If the string length in the Serial Number String Length Register is set to zero, the Manufacturing String Length and Product String Length must also be set to a length of zero. |

### 3.3.13 Manufacturer String Length Register

**Table 3-26. Register Offset 23h**

| BIT NO.     | 7 | 6 | 5 | 4 | 3 | 2 | 1 | 0 |
|-------------|---|---|---|---|---|---|---|---|
| RESET STATE | 0 | 0 | 0 | 0 | 0 | 0 | 0 | 0 |

**Table 3-27. Bit Descriptions – Manufacturer String Length Register**

| BIT | FIELD NAME   | ACCESS | DESCRIPTION   |
|-----|--------------|--------|---|
| 7   | RSVD         | RO     | Reserved. Read only, returns 0 when read.   |
| 6:0 | mfgStringLen | RW     | Manufacturer string length. The string length in bytes for the manufacturer string. The default value is 0, indicating that a manufacturer string is not provided. The maximum string length is 64 bytes. If the string length in the Serial Number String Length Register is set to zero, the Manufacturing String must also be set to a length of zero. When the field is non-zero, a manufacturer string of mfgStringLen bytes is returned at string index 3 from the data contained in the Manufacturer String registers. |

### 3.3.14 Product String Length Register

**Table 3-28. Register Offset 24h**

| BIT NO.     | 7 | 6 | 5 | 4 | 3 | 2 | 1 | 0 |
|-------------|---|---|---|---|---|---|---|---|
| RESET STATE | 0 | 0 | 0 | 0 | 0 | 0 | 0 | 0 |

**Table 3-29. Bit Descriptions – Product String Length Register**

| BIT | FIELD NAME   | ACCESS | DESCRIPTION   |
|-----|--------------|--------|---|
| 7   | RSVD         | RO     | Reserved. Read only, returns 0 when read.   |
| 6:0 | mfgStringLen | RW     | Product string length. The string length in bytes for the product string. The default value is 0, indicating that a product string is not provided. The maximum string length is 64 bytes. If the string length in the Serial Number String Length Register is set to zero, the Product String must also be set to a length of zero. When the field is non-zero, a product string of prodStringLen bytes is returned at string index 2 from the data contained in the Product String registers. |

### 3.3.15 Serial Number Registers

**Table 3-30. Register Offset 30h-4Fh**

| BIT NO.     | 7 | 6 | 5 | 4  | 3 | 2 | 1 | 0 |
|-------------|---|---|---|----|---|---|---|---|
| RESET STATE | x | x | x | xx | x | x | x | x |

**Table 3-31. Bit Descriptions – Serial Number Byte N Register**

| BIT | FIELD NAME      | ACCESS | DESCRIPTION   |
|-----|-----------------|--------|---|
| 7:0 | serialNumber[n] | RW     | Serial Number byte N. The serial number returned in the Serial Number string descriptor at string index 1. When customSernum is 1, these registers may be over-written by EEPROM contents or by an SMBus host. The same serial number will be returned in both the USB 2.0 and USB 3.0 descriptors of the TUSB8040. |

### 3.3.16 Manufacturer String Registers

**Table 3-32. Register Offset 50h-8Fh**

| BIT NO.     | 7 | 6 | 5 | 4 | 3 | 2 | 1 | 0 |
|-------------|---|---|---|---|---|---|---|---|
| RESET STATE | 0 | 0 | 0 | 0 | 0 | 0 | 0 | 0 |

**Table 3-33. Bit Descriptions – Manufacturer String Register**

| BIT | FIELD NAME       | ACCESS | DESCRIPTION   |
|-----|------------------|--------|---|
| 7:0 | mfgStringByte[n] | RW     | Manufacturer string byte N. These registers provide the string values returned for string index 3 when mfgStringLen is greater than 0. The number of bytes returned in the string is equal to mfgStringLen.<br>The programmed data should be in UNICODE UTF-16LE encodings as defined by The Unicode Standard, Worldwide Character Encoding, Version 5.0. |

### 3.3.17 Product String Registers

**Table 3-34. Register Offset 90h-CFh**

| BIT NO.     | 7 | 6 | 5 | 4 | 3 | 2 | 1 | 0 |
|-------------|---|---|---|---|---|---|---|---|
| RESET STATE | 0 | 0 | 0 | 0 | 0 | 0 | 0 | 0 |

**Table 3-35. Bit Descriptions – Product String Register**

| BIT | FIELD NAME        | ACCESS | DESCRIPTION  |
|-----|-------------------|--------|--|
| 7:0 | prodStringByte[n] | RW     | Product string byte N. These registers provide the string values returned for string index 2 when prodStringLen is greater than 0. The number of bytes returned in the string is equal to prodStringLen.<br>The programmed data should be in UNICODE UTF-16LE encodings as defined by The Unicode Standard, Worldwide Character Encoding, Version 5.0. |

### 3.3.18 Device Status and Command Register

**Table 3-36. Register Offset F8h**

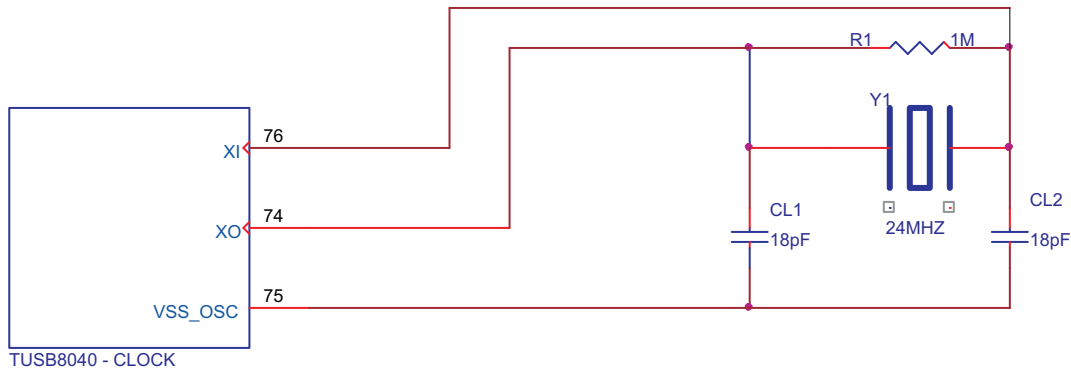
| BIT NO.     | 7 | 6 | 5 | 4 | 3 | 2 | 1 | 0 |
|-------------|---|---|---|---|---|---|---|---|
| RESET STATE | 0 | 0 | 0 | 0 | 0 | 0 | 0 | 0 |

**Table 3-37. Bit Descriptions – Device Status and Command Register**

| BIT | FIELD NAME | ACCESS | DESCRIPTION   |
|-----|------------|--------|---|
| 7:2 | RSVD       | RO     | Reserved. Read only, returns 0 when read.   |
| 1   | smbusRst   | RSU    | SMBus interface reset. This bit resets the SMBus slave interface to its default state and loads the registers back to their GRSTz values.<br>This bit is set by writing a 1 and is cleared by hardware on completion of the reset. A write of 0 has no effect. (Not used with I <sup>2</sup> C)   |
| 0   | cfgActive  | RCU    | Configuration active. This bit indicates that configuration of the TUSB8040 is currently active. The bit is set by hardware when the device enters the I <sup>2</sup> C or SMBus mode. The TUSB8040 does not connect on the upstream port while this bit is 1.<br>When in I <sup>2</sup> C mode, the bit is cleared by hardware when the TUSB8040 exits the I <sup>2</sup> C mode. When in the SMBus mode, this bit must be cleared by the SMBus host in order to exit the configuration mode and allow the upstream port to connect.<br>The bit is cleared by a writing 1. A write of 0 has no effect. |

## 4 CLOCK GENERATION

The TUSB8040 accepts a crystal input to drive an internal oscillator or an external clock source. If a clock is provided to XI instead of a crystal, XO is left open and VSSOSC should be connected to the PCB ground plane. Otherwise, if a crystal is used, the connection needs to follow the guidelines below. Since XI and XO are coupled to other leads and supplies on the PCB, it is important to keep them as short as possible and away from any switching leads. It is also recommended to minimize the capacitance between XI and XO. This can be accomplished by connecting the VSSOSC lead to the two external capacitors CL1 and CL2 and shielding them with the clean ground lines. The VSSOSC should not be connected to PCB ground when using a crystal.



**Figure 4-1. TUSB8040 Clock**

### 4.1 Crystal Requirements

The crystal must be fundamental mode with load capacitance of 12 pF - 24 pF and frequency stability rating of  $\pm 100$  PPM or better. To ensure proper startup oscillation condition, a maximum crystal equivalent series resistance (ESR) of 50  $\Omega$  is recommended. A parallel, 18-pF load capacitor should be used if a crystal source is used. VSSOSC should not be connected to the PCB ground plane.

### 4.2 Input Clock Requirements

When using an external clock source such as an oscillator, the reference clock should have a  $\pm 100$  PPM or better frequency stability and have less than 50-ps absolute peak to peak jitter or less than 25-ps peak to peak jitter after applying the USB 3.0 jitter transfer function. XI should be tied to the 1.8-V clock source and XO should be left floating. VSSOSC should be connected to the PCB ground plane.

## 5 POWER UP AND RESET

The TUSB8040 does not have specific power sequencing requirements with respect to the core power (VDD11) or I/O and analog power (VDD33). The core power (VDD11) or I/O power (VDD33) may be powered up for an indefinite period of time while the other is not powered up if all of these constraints are met:

- All maximum ratings and recommended operating conditions are observed.
- All warnings about exposure to maximum rated and recommended conditions are observed, particularly junction temperature. These apply to power transitions as well as normal operation.
- Bus contention while VDD33 is powered up must be limited to 100 hours over the projected life-time of the device.
- Bus contention while VDD33 is powered down may violate the absolute maximum ratings.

A supply bus is powered up when the voltage is within the recommended operating range. It is powered down when it is below that range, either stable or in transition.

A minimum reset duration of 3 ms is required. This is defined as the time when the power supplies are in the recommended operating range to the de-assertion of GRSTz. This can be generated using programmable-delay supervisory device or using an RC circuit.

## 6 ELECTRICAL SPECIFICATIONS

### 6.1 ABSOLUTE MAXIMUM RATINGS<sup>(1)</sup>

over operating free-air temperature range (unless otherwise noted)

|                       |                                | VALUE                     | UNIT |
|-----------------------|--------------------------------|---------------------------|------|
| V <sub>DD33</sub>     | Steady-state supply voltage    | -0.3 to 3.8               | V    |
| V <sub>DD11</sub>     |                                | -0.3 to 1.4               |      |
| V <sub>IO</sub>       | USB 2.0 DP/DM                  | -0.3 to VDD33 + 0.3 ≤ 3.8 | V    |
|                       | SuperSpeed USB TXP/M and RXP/M | -0.3 to VDD33 + 0.3 ≤ 3.8 |      |
|                       | XI/XO                          | -0.3 to 1.98              |      |
|                       | 3.3-V Tolerant I/O             | -0.3 to VDD33 + 0.3 ≤ 3.8 |      |
| V <sub>USB_VBUS</sub> |                                | -0.3 to 1.2               | V    |
| T <sub>stg</sub>      | Storage temperature range      | -65 to 150                | °C   |

(1) Stresses beyond those listed under Absolute Maximum Ratings may cause permanent damage to the device. These are stress ratings only, and functional operation of the device at these or any other conditions beyond those indicated under Recommended Operating Conditions is not implied. Expose to absolute-maximum-rated conditions for extended periods may affect device reliability

### 6.2 RECOMMENDED OPERATING CONDITIONS

over operating free-air temperature range (unless otherwise noted)

|                                  |                                      | MIN  | NOM | MAX   | UNIT |
|----------------------------------|--------------------------------------|------|-----|-------|------|
| V <sub>DD33</sub>                | Steady-state supply voltage          | 3    | 3.3 | 3.6   | V    |
| V <sub>DD11</sub> <sup>(1)</sup> |                                      | 0.99 | 1.1 | 1.26  |      |
| V <sub>IO</sub>                  | USB 2.0 DP/DM                        | 0    |     | VDD33 | V    |
|                                  | SuperSpeed USB TXP/M and RXP/M       | 0    |     | VDD33 |      |
|                                  | XI/XO                                | 0    |     | 1.8   |      |
|                                  | 3.3-V Tolerant I/O                   | 0    |     | VDD33 |      |
| V <sub>USB_VBUS</sub>            |                                      | 0    |     | 1.155 | V    |
| T <sub>A</sub>                   | Operating free-air temperature range | 0    | 25  | 70    | °C   |
| T <sub>J</sub>                   | Operating junction temperature range | 0    | 25  | 105   | °C   |

(1) A 1.05-V supply may be used as long as minimum supply conditions are met.

### 6.3 THERMAL INFORMATION

| THERMAL METRIC    |   | TUSB8040 | UNITS |
|-------------------|---|----------|-------|
|                   |   | PFP      |       |
|                   |   | 80 PINS  |       |
| $\theta_{JA}$     | Junction-to-ambient thermal resistance <sup>(1)</sup>       | 24.8     | °C/W  |
| $\theta_{JCTop}$  | Junction-to-case (top) thermal resistance <sup>(2)</sup>    | 21.5     |       |
| $\theta_{JB}$     | Junction-to-board thermal resistance <sup>(3)</sup>         | 8.37     |       |
| $\psi_{JT}$       | Junction-to-top characterization parameter <sup>(4)</sup>   | 0.5      |       |
| $\psi_{JB}$       | Junction-to-board characterization parameter <sup>(5)</sup> | 8.2      |       |
| $\theta_{JCbott}$ | Junction-to-case (bottom) thermal resistance <sup>(6)</sup> | 1.6      |       |

- (1) The junction-to-ambient thermal resistance under natural convection is obtained in a simulation on a JEDEC-standard, high-K board, as specified in JESD51-7, in an environment described in JESD51-2a.
- (2) The junction-to-case (top) thermal resistance is obtained by simulating a cold plate test on the package top. No specific JEDEC-standard test exists, but a close description can be found in the ANSI SEMI standard G30-88.
- (3) The junction-to-board thermal resistance is obtained by simulating in an environment with a ring cold plate fixture to control the PCB temperature, as described in JESD51-8.
- (4) The junction-to-top characterization parameter,  $\psi_{JT}$ , estimates the junction temperature of a device in a real system and is extracted from the simulation data for obtaining  $\theta_{JA}$ , using a procedure described in JESD51-2a (sections 6 and 7).
- (5) The junction-to-board characterization parameter,  $\psi_{JB}$ , estimates the junction temperature of a device in a real system and is extracted from the simulation data for obtaining  $\theta_{JA}$ , using a procedure described in JESD51-2a (sections 6 and 7).
- (6) The junction-to-case (bottom) thermal resistance is obtained by simulating a cold plate test on the exposed (power) pad. No specific JEDEC standard test exists, but a close description can be found in the ANSI SEMI standard G30-88.

## 6.4 3.3-V I/O ELECTRICAL CHARACTERISTICS

over operating free-air temperature range (unless otherwise noted)

| PARAMETER        | OPERATION   | TEST CONDITIONS | MIN                         | MAX          | UNIT |
|------------------|---|-----------------|-----------------------------|--------------|------|
| V <sub>IH</sub>  | High-level input voltage <sup>(1)</sup>   | VDD33           | 2                           | VDD33        | V    |
| V <sub>IL</sub>  | Low-level input voltage <sup>(1)</sup>  | VDD33           | 0                           | 0.8          | V    |
|                  |   | JTAG pins only  | 0                           | 0.55         |      |
| V <sub>I</sub>   | Input voltage   |                 | 0                           | VDD33        | V    |
| V <sub>O</sub>   | Output voltage <sup>(2)</sup>   |                 | 0                           | VDD33        | V    |
| t <sub>t</sub>   | Input transition time (t <sub>rise</sub> and t <sub>fall</sub> )                        |                 | 0                           | 25           | ns   |
| V <sub>hys</sub> | Input hysteresis <sup>(3)</sup>   |                 |                             | 0.13 x VDD33 | V    |
| V <sub>OH</sub>  | High-level output voltage   | VDD33           | I <sub>OH</sub> = -4 mA     | 2.4          | V    |
| V <sub>OL</sub>  | Low-level output voltage  | VDD33           | I <sub>OL</sub> = 4 mA      | 0.4          | V    |
| I <sub>OZ</sub>  | High-impedance, output current <sup>(2)</sup>   | VDD33           | V <sub>I</sub> = 0 to VDD33 | ±20          | µA   |
| I <sub>OZP</sub> | High-impedance, output current with internal pullup or pulldown resistor <sup>(4)</sup> | VDD33           | V <sub>I</sub> = 0 to VDD33 | ±225         | µA   |
| I <sub>I</sub>   | Input current <sup>(5)</sup>  | VDD33           | V <sub>I</sub> = 0 to VDD33 | ±15          | µA   |

(1) Applies to external inputs and bidirectional buffers.

(2) Applies to external outputs and bidirectional buffers.

(3) Applies to GRSTz.

(4) Applies to pins with internal pullups/pulldowns.

(5) Applies to external input buffers.

## 6.5 HUB INPUT SUPPLY CURRENT

over operating free-air temperature range (unless otherwise noted)

| PARAMETER       |                |       |       | CONDITION   | MIN | TYP | MAX | UNIT |
|-----------------|----------------|-------|-------|---|-----|-----|-----|------|
| I <sub>DD</sub> | Supply current | VDD11 | 1.1 V | US: SuperSpeed and high-speed, DS: 4 ports actively transmitting data at SuperSpeed | 655 | 730 | 805 | mA   |
|                 |                |       |       | US: SuperSpeed and High-speed, DS: no DS connections                                | 390 | 430 | 470 |      |
|                 |                |       |       | US: High-Speed, DS: 4 ports actively transmitting data at high-speed                | 395 | 435 | 475 |      |
|                 |                |       |       | US: High-Speed, DS: 4 ports connected at high-speed and idle                        | 385 | 425 | 465 |      |
|                 |                |       |       | US: High-Speed (SUSPEND MODE), DS: no DS connections                                | 370 | 410 | 450 |      |
|                 |                |       | 1.2 V | US: SuperSpeed and high-speed, DS: 4 ports actively transmitting data at SuperSpeed | 765 | 840 | 905 |      |
|                 |                |       |       | US: SuperSpeed and High-speed, DS: no DS connections                                | 420 | 470 | 520 |      |
|                 |                |       |       | US: High-Speed, DS: 4 ports actively transmitting data at high-speed                | 430 | 480 | 530 |      |
|                 |                |       |       | US: High-Speed, DS: 4 ports connected at high-speed and idle                        | 420 | 470 | 520 |      |
|                 |                |       |       | US: High-Speed (SUSPEND MODE), DS: no DS connections                                | 405 | 450 | 495 |      |
|                 |                | VDD33 |       | US: SuperSpeed and high-speed, DS: 4 ports actively transmitting data at SuperSpeed | 105 | 120 | 135 | mA   |
|                 |                |       |       | US: SuperSpeed and High-speed, DS: no DS connections                                | 105 | 120 | 135 |      |
|                 |                |       |       | US: High-Speed, DS: 4 ports actively transmitting data at high-speed                | 105 | 120 | 135 |      |
|                 |                |       |       | US: High-Speed, DS: 4 ports connected at high-speed and idle                        | 105 | 120 | 135 |      |
|                 |                |       |       | US: High-Speed, DS: no DS connections   | 105 | 120 | 135 |      |
|                 |                |       |       | US: High-Speed (SUSPEND MODE), DS: no DS connections                                | 55  | 60  | 65  |      |

## PACKAGING INFORMATION

| Orderable part number       | Status<br>(1) | Material type<br>(2) | Package   Pins      | Package qty   Carrier  | RoHS<br>(3) | Lead finish/<br>Ball material<br>(4) | MSL rating/<br>Peak reflow<br>(5) | Op temp (°C) | Part marking<br>(6) |
|-----------------------------|---------------|----------------------|---------------------|------------------------|-------------|--------------------------------------|-----------------------------------|--------------|---------------------|
| TUSB8040BRKMR               | NRND          | Production           | WQFN-MR (RKM)   100 | -                      | -           | Call TI                              | Call TI                           | 0 to 70      |                     |
| TUSB8040BRKMT               | NRND          | Production           | WQFN-MR (RKM)   100 | -                      | -           | Call TI                              | Call TI                           | 0 to 70      |                     |
| <a href="#">TUSB8040PFP</a> | NRND          | Production           | HTQFP (PFP)   80    | 96   JEDEC TRAY (10+1) | Yes         | NIPDAU                               | Level-3-260C-168 HR               | 0 to 70      | TUSB8040            |
| TUSB8040PFP.A               | NRND          | Production           | HTQFP (PFP)   80    | 96   JEDEC TRAY (10+1) | Yes         | NIPDAU                               | Level-3-260C-168 HR               | 0 to 70      | TUSB8040            |

<sup>(1)</sup> **Status:** For more details on status, see our [product life cycle](#).

<sup>(2)</sup> **Material type:** When designated, preproduction parts are prototypes/experimental devices, and are not yet approved or released for full production. Testing and final process, including without limitation quality assurance, reliability performance testing, and/or process qualification, may not yet be complete, and this item is subject to further changes or possible discontinuation. If available for ordering, purchases will be subject to an additional waiver at checkout, and are intended for early internal evaluation purposes only. These items are sold without warranties of any kind.

<sup>(3)</sup> **RoHS values:** Yes, No, RoHS Exempt. See the [TI RoHS Statement](#) for additional information and value definition.

<sup>(4)</sup> **Lead finish/Ball material:** Parts may have multiple material finish options. Finish options are separated by a vertical ruled line. Lead finish/Ball material values may wrap to two lines if the finish value exceeds the maximum column width.

<sup>(5)</sup> **MSL rating/Peak reflow:** The moisture sensitivity level ratings and peak solder (reflow) temperatures. In the event that a part has multiple moisture sensitivity ratings, only the lowest level per JEDEC standards is shown. Refer to the shipping label for the actual reflow temperature that will be used to mount the part to the printed circuit board.

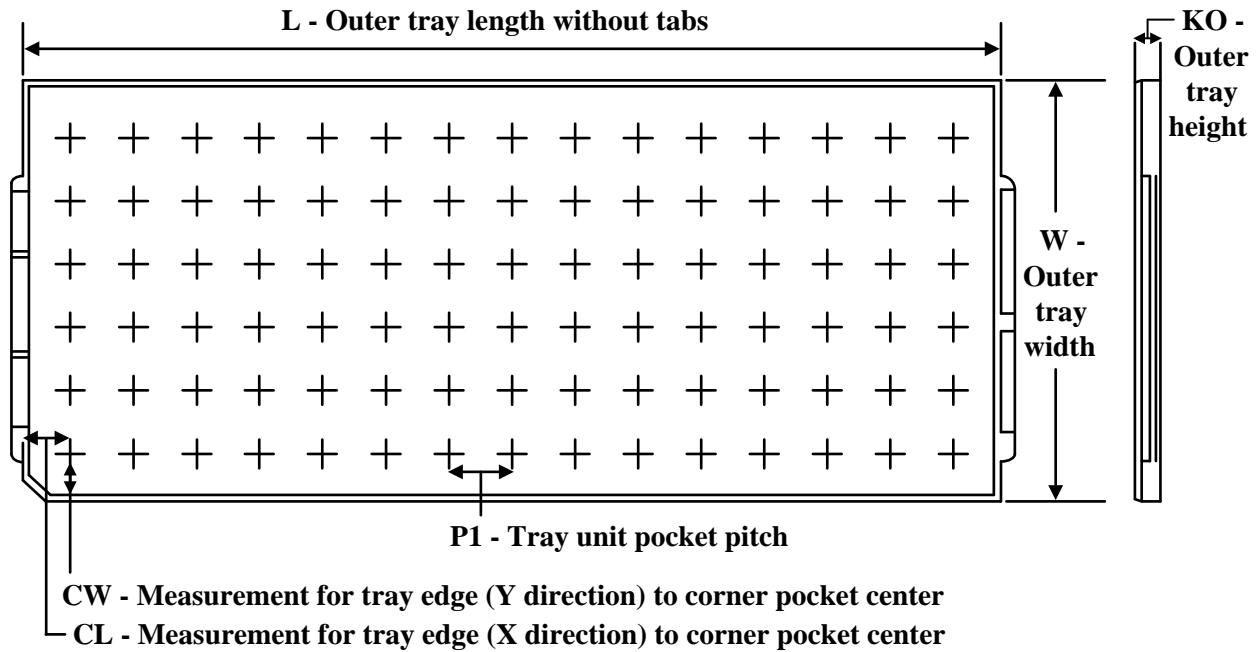
<sup>(6)</sup> **Part marking:** There may be an additional marking, which relates to the logo, the lot trace code information, or the environmental category of the part.

Multiple part markings will be inside parentheses. Only one part marking contained in parentheses and separated by a "~" will appear on a part. If a line is indented then it is a continuation of the previous line and the two combined represent the entire part marking for that device.

**Important Information and Disclaimer:** The information provided on this page represents TI's knowledge and belief as of the date that it is provided. TI bases its knowledge and belief on information provided by third parties, and makes no representation or warranty as to the accuracy of such information. Efforts are underway to better integrate information from third parties. TI has taken and continues to take reasonable steps to provide representative and accurate information but may not have conducted destructive testing or chemical analysis on incoming materials and chemicals. TI and TI suppliers consider certain information to be proprietary, and thus CAS numbers and other limited information may not be available for release.

In no event shall TI's liability arising out of such information exceed the total purchase price of the TI part(s) at issue in this document sold by TI to Customer on an annual basis.

## TRAY



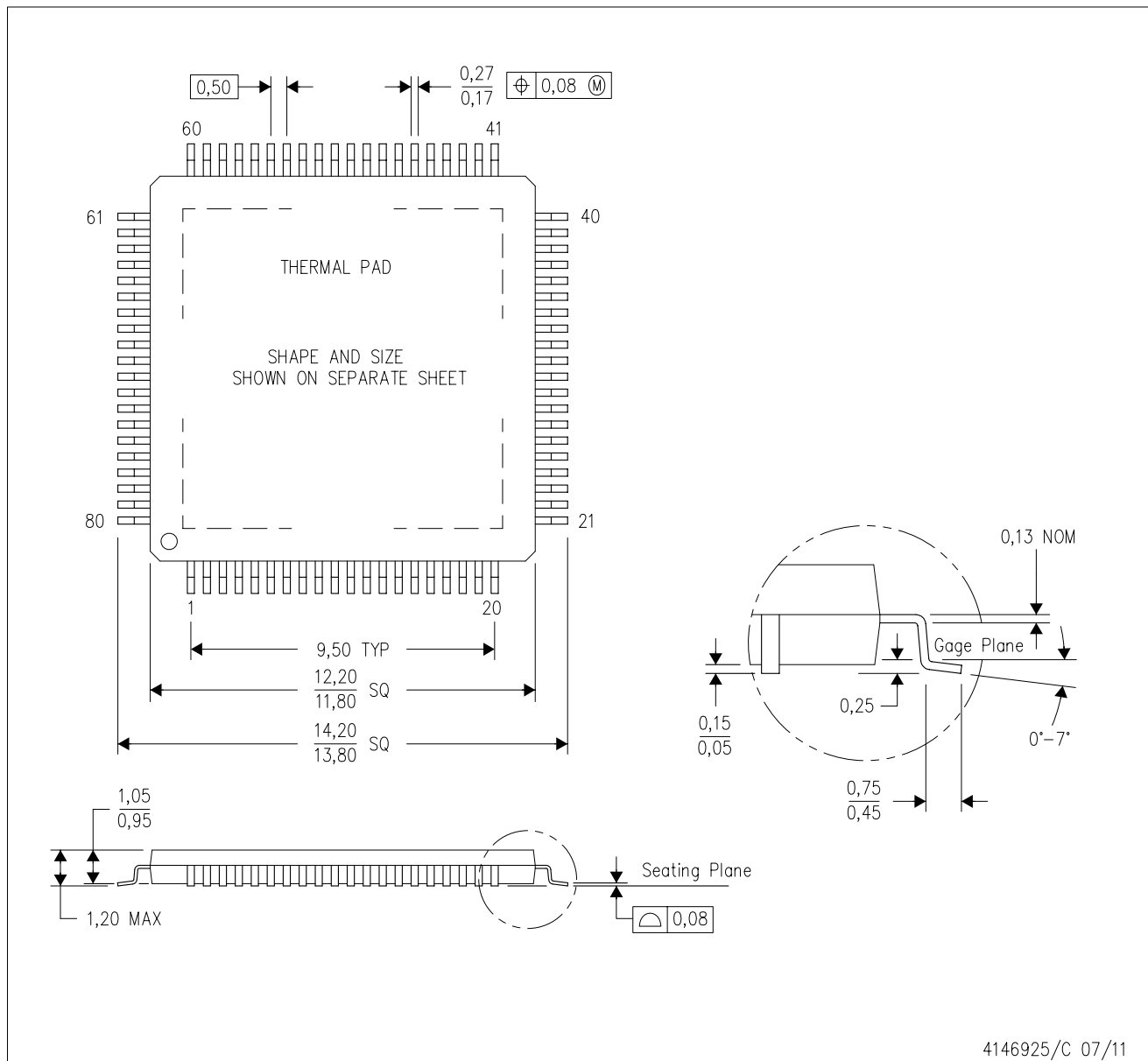
Chamfer on Tray corner indicates Pin 1 orientation of packed units.

\*All dimensions are nominal

| Device        | Package Name | Package Type | Pins | SPQ | Unit array matrix | Max temperature (°C) | L (mm) | W (mm) | K0 (μm) | P1 (mm) | CL (mm) | CW (mm) |
|---------------|--------------|--------------|------|-----|-------------------|----------------------|--------|--------|---------|---------|---------|---------|
| TUSB8040PFP   | PFP          | HTQFP        | 80   | 96  | 6 x 16            | 150                  | 315    | 135.9  | 7620    | 18.7    | 17.25   | 18.3    |
| TUSB8040PFP.A | PFP          | HTQFP        | 80   | 96  | 6 x 16            | 150                  | 315    | 135.9  | 7620    | 18.7    | 17.25   | 18.3    |

PFP (S-PQFP-G80)

PowerPAD™ PLASTIC QUAD FLATPACK



- NOTES:
- A. All linear dimensions are in millimeters.
  - B. This drawing is subject to change without notice.
  - C. Body dimensions do not include mold flash or protrusion.
  - D. This package is designed to be soldered to a thermal pad on the board. Refer to Technical Brief, PowerPad Thermally Enhanced Package, Texas Instruments Literature No. SLMA002 for information regarding recommended board layout. This document is available at [www.ti.com](http://www.ti.com) <<http://www.ti.com>>.
  - E. See the additional figure in the Product Data Sheet for details regarding the exposed thermal pad features and dimensions.
  - F. Falls within JEDEC MS-026

PowerPAD is a trademark of Texas Instruments.

## THERMAL PAD MECHANICAL DATA

PFP (S-PQFP-G80)

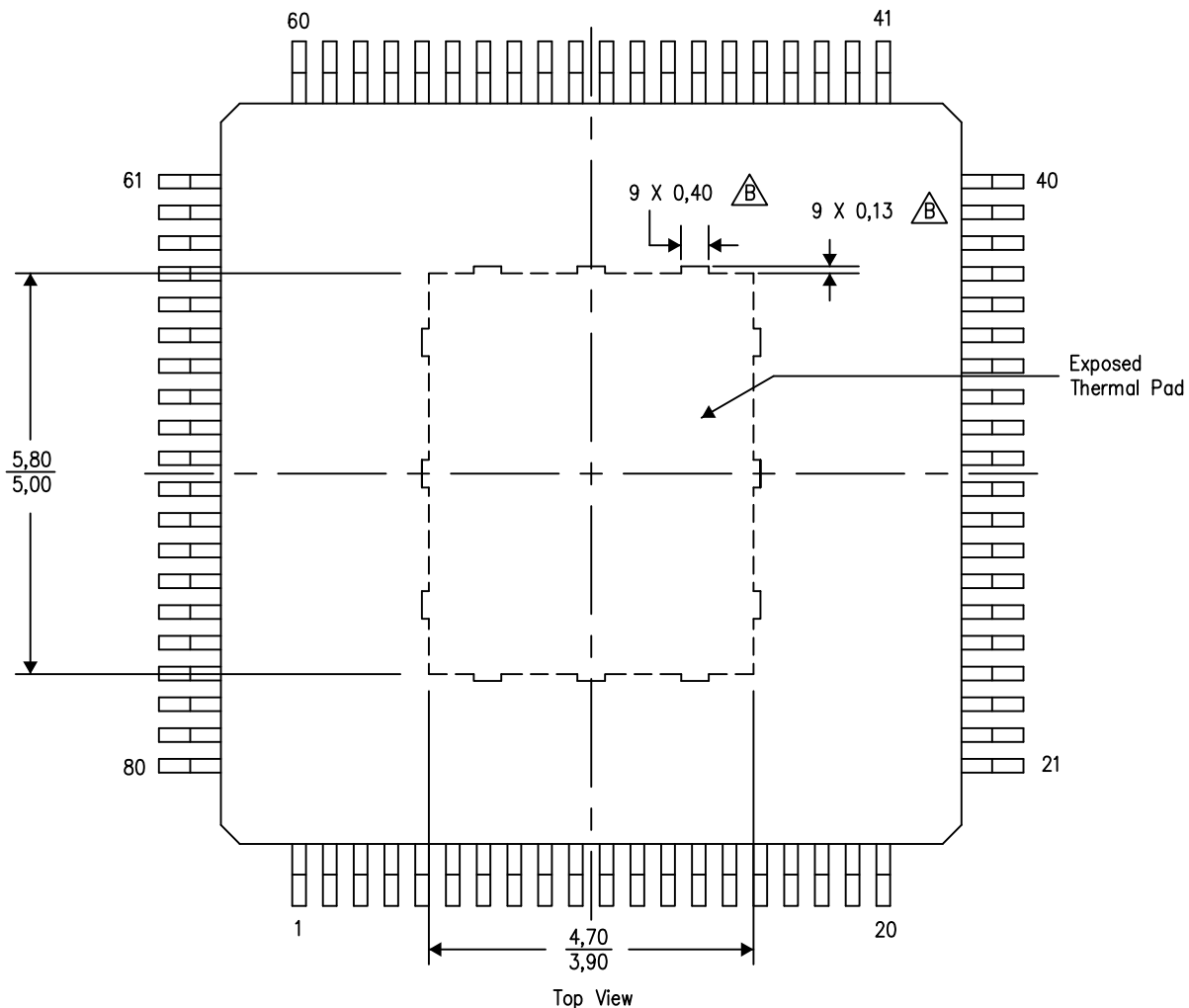
PowerPAD™ PLASTIC QUAD FLATPACK

### THERMAL INFORMATION

This PowerPAD™ package incorporates an exposed thermal pad that is designed to be attached to a printed circuit board (PCB). The thermal pad must be soldered directly to the PCB. After soldering, the PCB can be used as a heatsink. In addition, through the use of thermal vias, the thermal pad can be attached directly to the appropriate copper plane shown in the electrical schematic for the device, or alternatively, can be attached to a special heatsink structure designed into the PCB. This design optimizes the heat transfer from the integrated circuit (IC).

For additional information on the PowerPAD package and how to take advantage of its heat dissipating abilities, refer to Technical Brief, PowerPAD Thermally Enhanced Package, Texas Instruments Literature No. SLMA002 and Application Brief, PowerPAD Made Easy, Texas Instruments Literature No. SLMA004. Both documents are available at [www.ti.com](http://www.ti.com).

The exposed thermal pad dimensions for this package are shown in the following illustration.



4206327-20/P 05/14

NOTE: A. All linear dimensions are in millimeters

 Tie strap features may not be present.

PowerPAD is a trademark of Texas Instruments

## IMPORTANT NOTICE AND DISCLAIMER

TI PROVIDES TECHNICAL AND RELIABILITY DATA (INCLUDING DATASHEETS), DESIGN RESOURCES (INCLUDING REFERENCE DESIGNS), APPLICATION OR OTHER DESIGN ADVICE, WEB TOOLS, SAFETY INFORMATION, AND OTHER RESOURCES "AS IS" AND WITH ALL FAULTS, AND DISCLAIMS ALL WARRANTIES, EXPRESS AND IMPLIED, INCLUDING WITHOUT LIMITATION ANY IMPLIED WARRANTIES OF MERCHANTABILITY, FITNESS FOR A PARTICULAR PURPOSE OR NON-INFRINGEMENT OF THIRD PARTY INTELLECTUAL PROPERTY RIGHTS.

These resources are intended for skilled developers designing with TI products. You are solely responsible for (1) selecting the appropriate TI products for your application, (2) designing, validating and testing your application, and (3) ensuring your application meets applicable standards, and any other safety, security, regulatory or other requirements.

These resources are subject to change without notice. TI grants you permission to use these resources only for development of an application that uses the TI products described in the resource. Other reproduction and display of these resources is prohibited. No license is granted to any other TI intellectual property right or to any third party intellectual property right. TI disclaims responsibility for, and you fully indemnify TI and its representatives against any claims, damages, costs, losses, and liabilities arising out of your use of these resources.

TI's products are provided subject to [TI's Terms of Sale](#), [TI's General Quality Guidelines](#), or other applicable terms available either on [ti.com](http://ti.com) or provided in conjunction with such TI products. TI's provision of these resources does not expand or otherwise alter TI's applicable warranties or warranty disclaimers for TI products. Unless TI explicitly designates a product as custom or customer-specified, TI products are standard, catalog, general purpose devices.

TI objects to and rejects any additional or different terms you may propose.

Copyright © 2025, Texas Instruments Incorporated

Last updated 10/2025