

Printed: Sep 12, 2013

| |
|------------------|
| PRODUCT NO. |
| 10026704-***** |
| 10026704-*****LF |

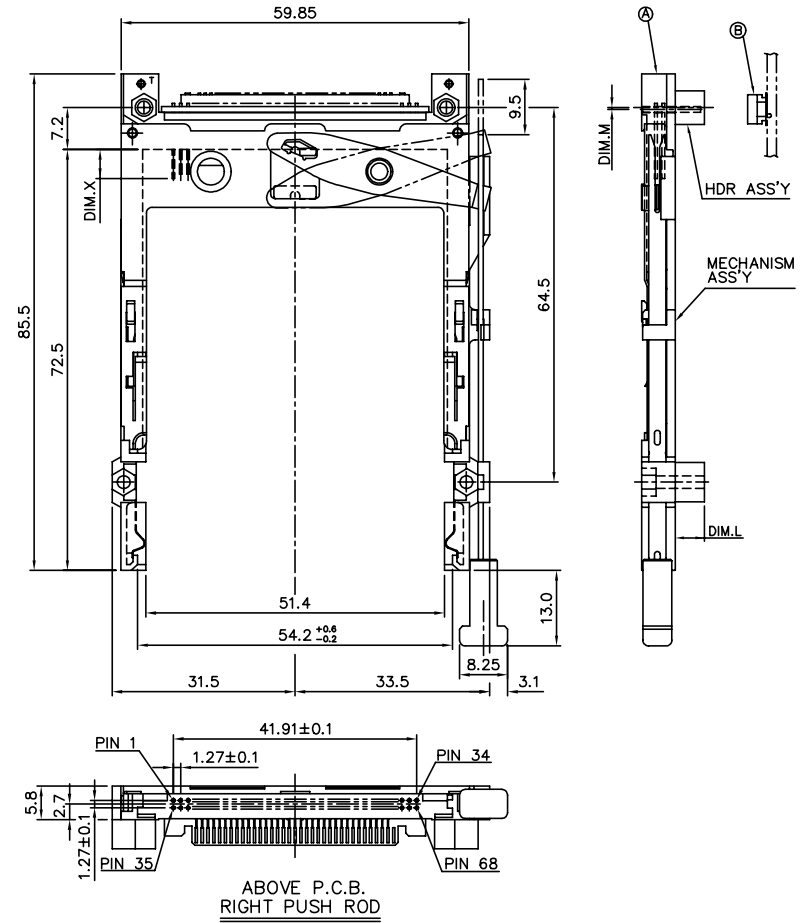
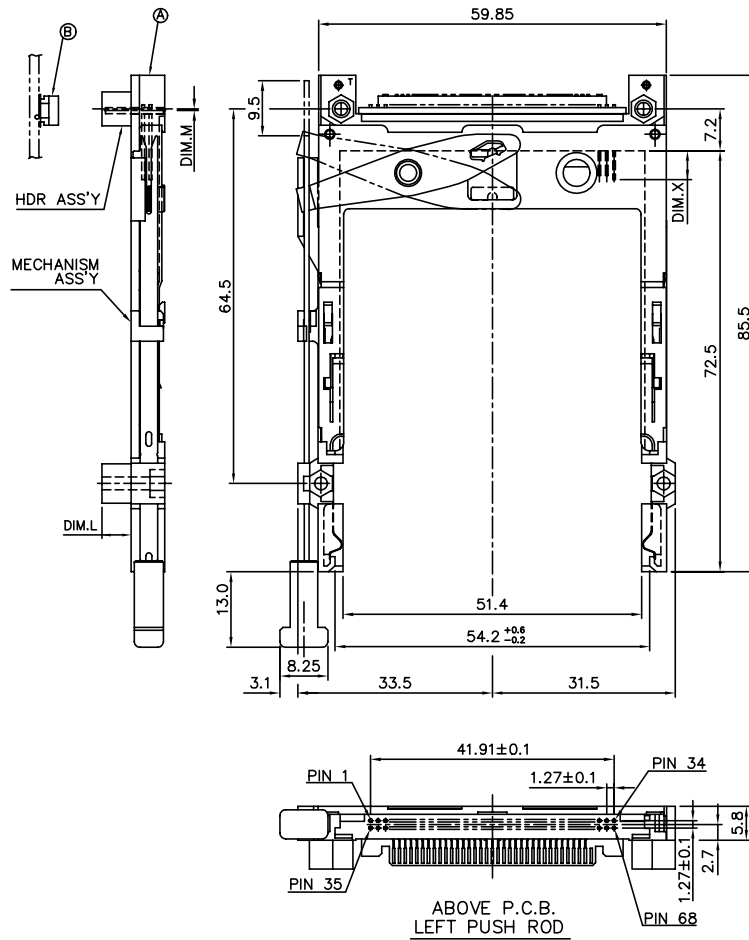
DESCRIPTION : ABOVE PCB, DECK AND PUSH ROD LOCATION ARE AS VIEW BY USER.

| UPPER DECK | | | | | | |
|------------------------|---|------------------------|------------------|-----------------------------|--|--|
| Ⓐ PRODUCT NO. | JOINT WITH LOWER DECK STAND-OFF HIGH(DIM. L) | PUSH ROD LOCATION ③ | P.C.B. SIDE ③ | P.C.B LAYOUT RECOMMENDED | Ⓑ MATING RECEPTACLE | MOUNT STYLE TO PCB AND PUSH ROD SIDE |
| 10026704-025CA/025CALF | 2.2 | RIGHT | ABOVE | SEE DRAWING P/N: TA-1052 | <div>↑</div> <div>RECEPTACLE PART NUMBER: 91931-31169 91931-31169LF</div> <div>↓</div> | |
| 10026704-045CA/045CALF | 4.3 | | | | | |
| 10026704-055CA/055CALF | 5.0 | | | | | |
| 10026704-125CA/125CALF | 2.2 | LEFT | | | | |
| 10026704-145CA/145CALF | 4.3 | | | | | |
| 10026704-155CA/155CALF | 5.0 | | | | | |
| 10026704-525CA/525CALF | 2.2 | RIGHT | BELOW | | | |
| 10026704-545CA/545CALF | 4.3 | | | | | |
| 10026704-555CA/555CALF | 5.0 | | | | | |
| 10026704-625CA/625CALF | 2.2 | LEFT | | | | |
| 10026704-645CA/645CALF | 4.3 | | | | | |
| 10026704-655CA/655CALF | 5.0 | | | | | |

- NOTES:
- 1. IT CAN'T BE USED FOR SINGLE DECK.
 - 2. IT MUST BE ASSEMBLED BY USER FOR DOUBLE DECK APPLICATION.

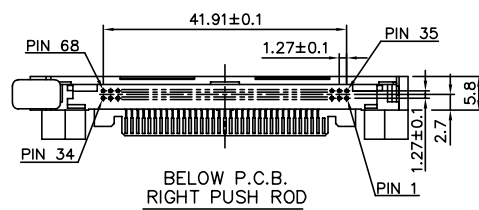
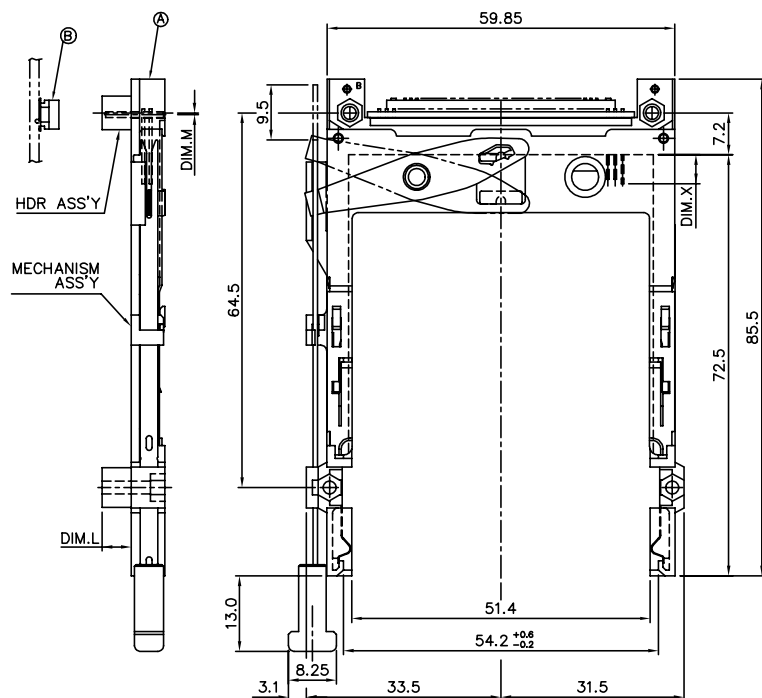
| | | | | | | | | | |
|-------------|----------|--------------------|---|-----------------------------|------|---------------------------------------|----------|-------------------------------|----------------------|
| mat'l. code | | surface ISO1302 | | tolerance ISO1101 ISO406 | | projection ASME Y14.5 | | product family PCMCIA | |
| l | tr | ec | n | odr | date | tolerances unless otherwise specified | | title | |
| D | | | | | | angle | 8° | MM | EJECTOR HEADER ASS'Y |
| | | | | | | | | scale 1:1 | 5.5V,SMT TYPE 1/2/3 |
| | | | | | dr | WENDY CHEN | 04/18/03 | dwg no | sheet 2 of 6 |
| | | | | | engr | SPENCER LAI | 04/18/03 | 10026704 | A4 |
| | | | | | chr | SCOTT LU | 04/18/03 | type Product Customer Drawing | |
| | | | | | appd | JENN TSAO | 04/18/03 | | |
| sheet | revision | | | | | | | | |
| index | sheet | | | | | | | | |

| PRODUCT NO. | DIM.M | DIM.L |
|------------------------|-------|-------|
| 10026704-020CA/020CALF | 2.15 | 2.2 |
| 10026704-040CA/040CALF | -0.3 | 4.3 |
| 10026704-050CA/050CALF | -0.3 | 5.0 |

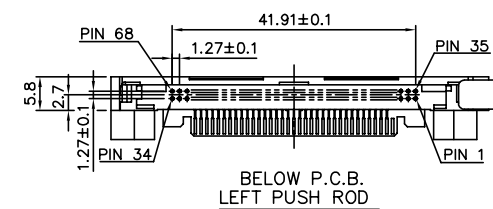
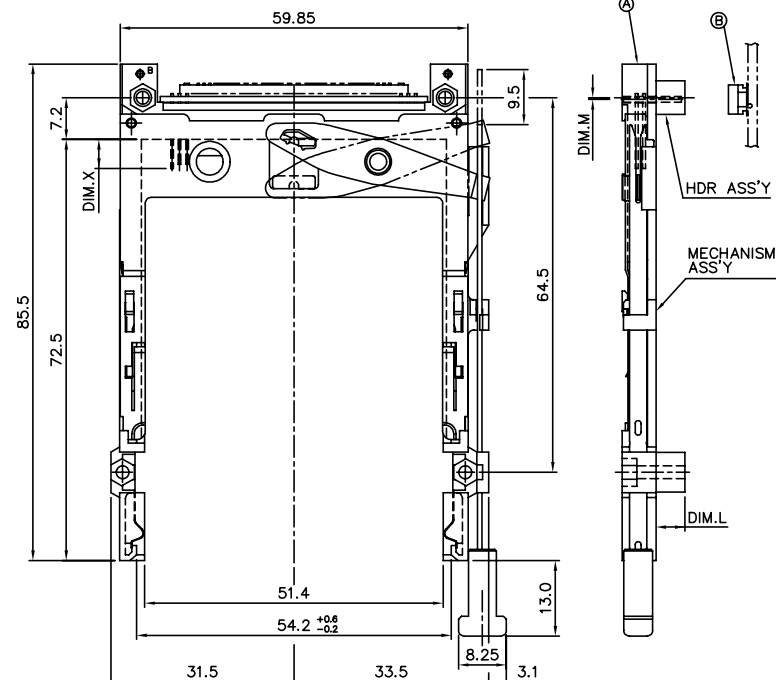


| | | | | | | | | | |
|-------------|--|----------------|--|--|--|--|--|-------------------------------|--|
| mat'l. code | | | | surface <input checked="" type="checkbox"/> tolerance <input type="checkbox"/> | | projection | | product family | |
| | | | | ISO1302 <input checked="" type="checkbox"/> ISO1101 ISO406 | | | | PCMCIA | |
| ltr | | ecn nodr | | date | | tolerances unless otherwise specified | | title | |
| D | | | | | | angle <input type="checkbox"/> linear <input type="checkbox"/> | | EJECTOR HEADER ASS'Y | |
| | | | | | | ±0.30 | | 5.5V,SMT TYPE 1/2/3 | |
| | | | | | | 0±2' | | scale 1:1 | |
| | | | | dr WENDY CHEN 04/18/03 | | | | dwg no sheet 3 of 6 size | |
| | | | | engr SPENCER LAI 04/18/03 | | | | 10026704 A4 | |
| | | | | chr SCOTT LU 04/18/03 | | | | | |
| | | | | appd JENN TSAO 04/18/03 | | | | type Product Customer Drawing | |
| sheet index | | revision sheet | | | | | | | |

| PRODUCT NO. | DIM.M | DIM.L |
|------------------------|-------|-------|
| 10026704-520CA/520CALF | 2.15 | 2.2 |
| 10026704-540CA/540CALF | -0.3 | 4.3 |
| 10026704-550CA/550CALF | -0.3 | 5.0 |

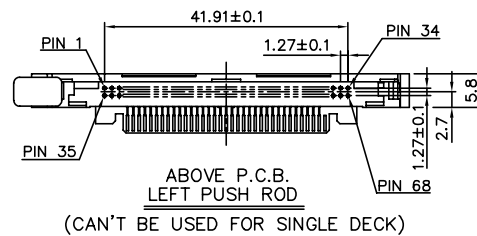
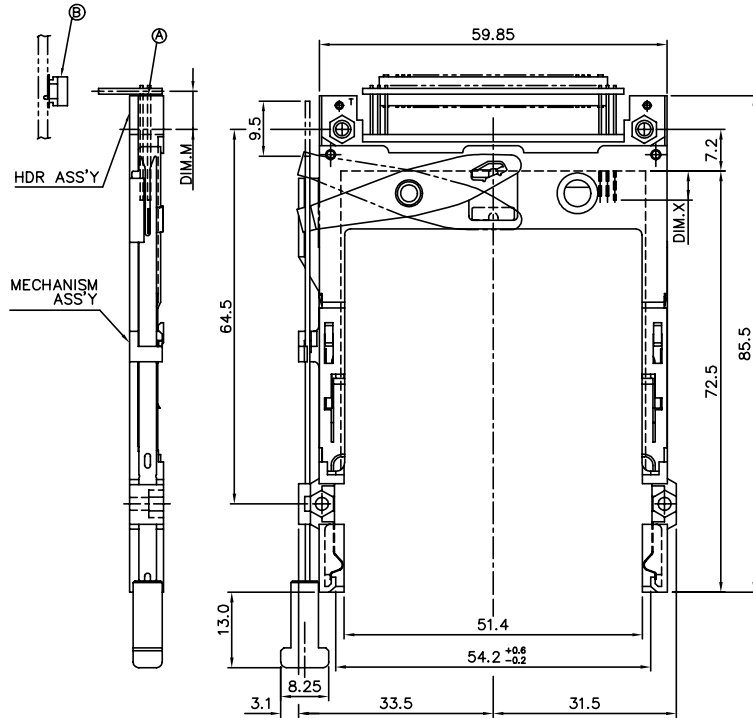


| PRODUCT NO. | DIM.M | DIM.L |
|------------------------|-------|-------|
| 10026704-620CA/620CALF | 2.15 | 2.2 |
| 10026704-640CA/640CALF | -0.3 | 4.3 |
| 10026704-650CA/650CALF | -0.3 | 5.0 |

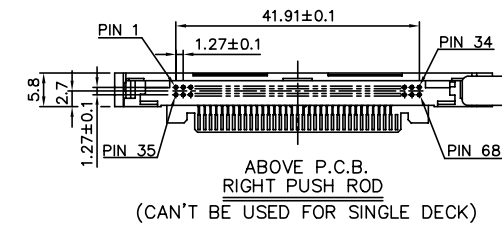
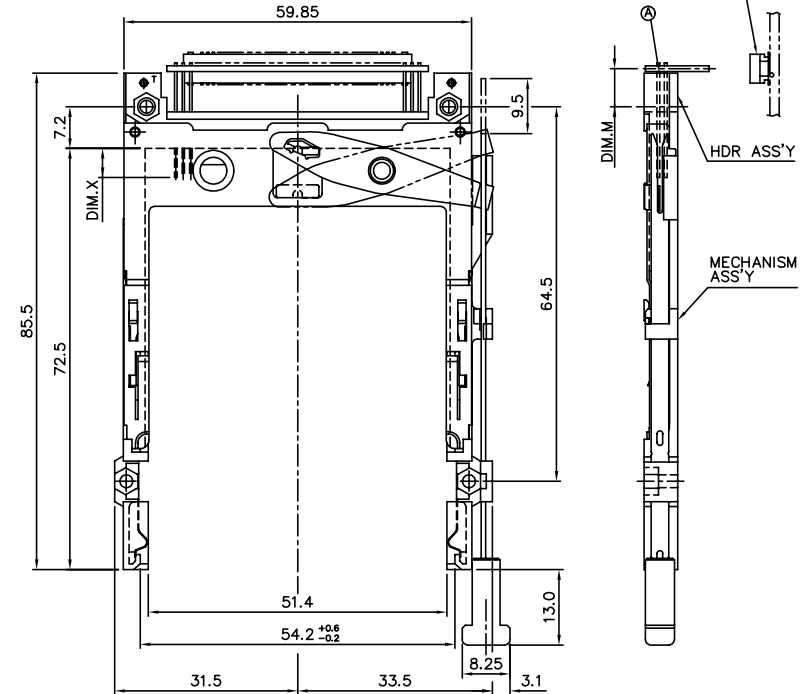


| | | | | |
|-------------------|---------------------------------------|-----------------------------|--------------------------|--|
| mat'l. code | surface ISO1302 | tolerance ISO1101 ISO406 | projection ASME Y14.5 | product family PCMCIA |
| ltr ecn nodr date | tolerances unless otherwise specified | | | title EJECTOR HEADER ASS'Y 5.5V,SMT TYPE 1/2/3 |
| D | angle 0°±2' | ±0.30 | MM | scale 1:1 |
| | dr WENDY CHEN | 04/18/03 | FCI | dwg no |
| | engr SPENCER LAI | 04/18/03 | | sheet 4 of 6 |
| | chr SCOTT LU | 04/18/03 | | size 10026704 A4 |
| | appd JENN TSAO | 04/18/03 | | type Product Customer Drawing |
| sheet index | revision sheet | | | |

| PRODUCT NO. | DIM.M |
|------------------------|-------|
| 10026704-125CA/125CALF | 9.0 |
| 10026704-145CA/145CALF | 6.55 |
| 10026704-155CA/155CALF | 6.55 |

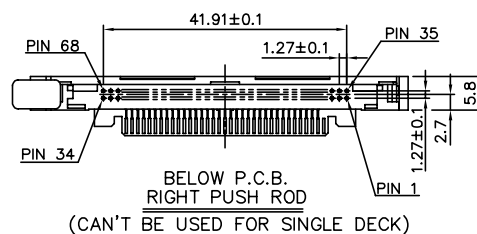
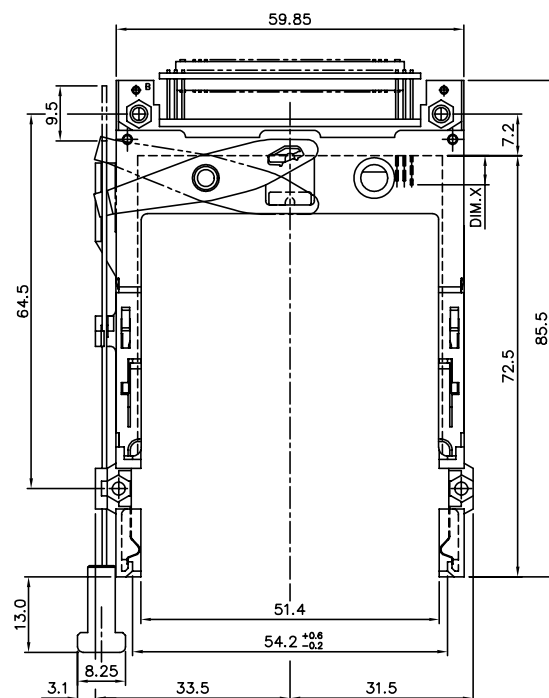
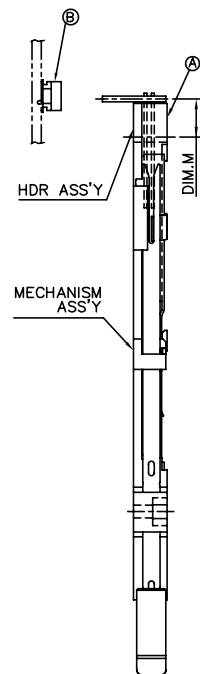


| PRODUCT NO. | DIM.M |
|------------------------|-------|
| 10026704-025CA/025CALF | 9.0 |
| 10026704-045CA/045CALF | 6.55 |
| 10026704-055CA/055CALF | 6.55 |

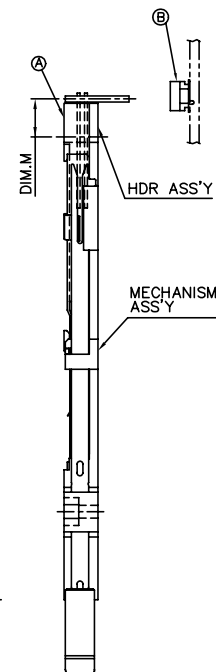
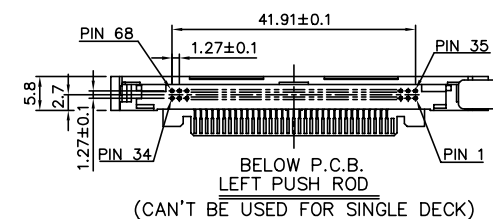
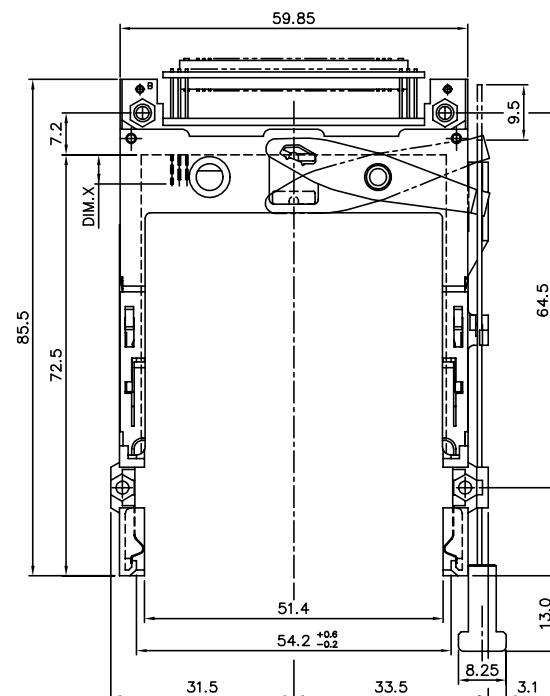


| | | | | |
|-------------------|---------------------------------------|-----------------------------|-------------------|-------------------------------|
| mat'l. code | surface ISO1302 | tolerance ISO1101 ISO406 | projection 1:1 | product family PCMCIA |
| ltr ecn nodr date | tolerances unless otherwise specified | angle 0°±2' | MM | EJECTOR HEADER ASS'Y |
| | | ±0.30 | scale 1:1 | 5.5V,SMT TYPE 1/2/3 |
| | dr WENDY CHEN 04/18/03 | engr SPENCER LAI 04/18/03 | FCI | dwg no 10026704 |
| | chr SCOTT LU 04/18/03 | appd JENN TSAO 04/18/03 | | sheet 5 of 6 |
| sheet index | revision sheet | | | size A4 |
| | | | | type Product Customer Drawing |

| PRODUCT NO. | DIM.M |
|------------------------|-------|
| 10026704-525CA/525CALF | 9.0 |
| 10026704-545CA/545CALF | 6.55 |
| 10026704-555CA/555CALF | 6.55 |



| PRODUCT NO. | DIM.M |
|------------------------|-------|
| 10026704-625CA/625CALF | 9.0 |
| 10026704-645CA/645CALF | 6.55 |
| 10026704-655CA/655CALF | 6.55 |



| | | | | |
|-------------------|---------------------------------------|-----------------------------|--------------------------|-------------------------------|
| mat'l. code | surface ISO1302 | tolerance ISO1101 ISO406 | projection ASME Y14.5 | product family PCMCIA |
| ltn ecn nodr date | tolerances unless otherwise specified | | | title |
| D | angle 0°±2' | ±0.30 | MM | EJECTOR HEADER ASS'Y |
| | dr WENDY CHEN | 04/18/03 | scale 1:1 | 5.5V,SMT TYPE 1/2/3 |
| | engr SPENCER LAI | 04/18/03 | FCI | dwg no |
| | chr SCOTT LU | 04/18/03 | | sheet 6 of 6 |
| | appd JENN TSAO | 04/18/03 | | size A4 |
| sheet index | revision sheet | | | type Product Customer Drawing |