

[illegible]

**LEAD STYLE —**

-05.0:	.199[5.05]	HEIGHT
-06.0:	.238[6.05]	HEIGHT
-06.5:	.258[6.55]	HEIGHT
-07.5:	.297[7.54]	HEIGHT


(SEE TABLE 1)

-S: SELECTIVE GOLD (30µ") IN CONTACT AREA,  
MATTE TIN ON TAIL (USE NEW-SUB-C-209-XX.X-S-X)

-L: LIGHT GOLD (10µ") IN CONTACT AREA,  
MATTE TIN ON TAIL (USE NEW-SUB-C-209-XX.X-L-X)

-SM: SELECTIVE GOLD (30µ") IN CONTACT AREA,  
MATTE TIN ON TAIL (USE NEW-SUB-C-209-XX.X-S-X)

-04: 4 ROWS (SEE SHT 5, FIG 11)  
 -05: 5 ROWS (SEE SHT 3, FIG 5) (SEE NOTE 18)  
 -06: 6 ROWS (SEE SHT 3, FIG 4)  
 -08: 8 ROWS (SEE SHT 1, FIG 1)  
 -10: 10 ROWS (SEE SHT 2, FIG 2)

\* = NOT TOOLED  
☐ = 10 POSITION ONLY AVAILABLE IN 4 ROW.  
☒ = ONLY AVAILABLE WITH -05.0 BODY HEIGHT, -10 ROW.  
 = ONLY AVAILABLE WITH -05.0 AND -06.5 BODY HEIGHT AND 4 ROW.  
 \*\* = ONLY AVAILABLE WITH -06.5 BODY HEIGHT, AND -06 ROW.  
 \*\*\* = ONLY AVAILABLE WITH 30 POS & 4 ROW.  
 \*\*\*\* = ONLY AVAILABLE WITH -05.0 BODY HEIGHT, -04, -06, -08 & -10 ROW.  
 \*\*\*\*\* = NOT RELEASED FOR PRODUCTION.

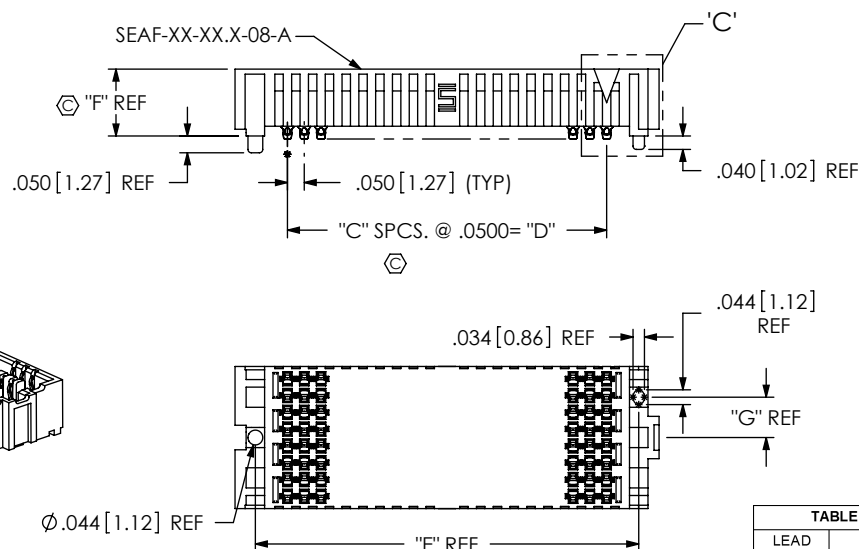
\*\*\*\*-LP: LATCH POST OPTION  
(SEE SHT 4, FIG 8)  
(ONLY AVAILABLE WITH -05.0  
LEAD STYLE, -04, -06, -08 & -10 ROW)  
(-K OPTION NOT AVAILABLE ON -10  
OR -15 POSITION)

\*\*\*\*\*-RP: RETENTION PIN  
(SEE SHT 4, FIG 9)  
(ONLY AVAILABLE WITH -05.0  
LEAD STYLE, 6, 8 & 10 ROWS)

-PP: POLARIZATION PIN  
(SEE SHT 4, FIG 10)  
(ONLY AVAILABLE WITH -05.0  
LEAD STYLE, 6, 8 & 10 ROWS)

SOLDER COMPOSITION & STYLE 

-1: 63% TIN / 37% LEAD  
**CHARGE TAIL**  
(USE NEW-SUB-C-209-XX.X-X-1)  
-2: 95.5% TIN/3.8% SILVER/.7%  
**COPPER CHARGE TAIL**  
(USE NEW-SUB-C-209-XX.X-X-2)



LEAD STYLE	"F"	
-05.0	.199	[5.05]
-06.0	.238	[6.05]
-06.5	.258	[6.55]
***-07.5	.297	[7.54]

No OF ROWS	"G"	
-04	.079	[2.01
-05	.120	[3.05
-06	.120	[3.05
-08	.120	[3.05
-10	.120	[3.05

LEAD STYLE	BODY CALLOUT	CONTACT
		SOLDER CHARGE TAIL
-05.0	SEAF-XX-05.0-XX-X	NEW-SUB-C-209-05.0-X-X
-06.0	SEAF-XX-06.0-XX-X	NEW-SUB-C-209-06.0-X-X
-06.5	SEAF-XX-06.5-XX-X	NEW-SUB-C-209-06.5-X-X
***-07.5	SEAF-XX-07.5-XX-X	NEW-SUB-C-209-07.5-X-X

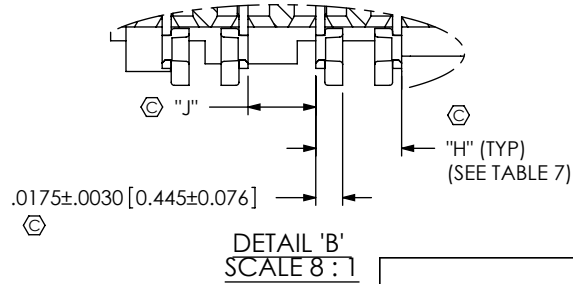
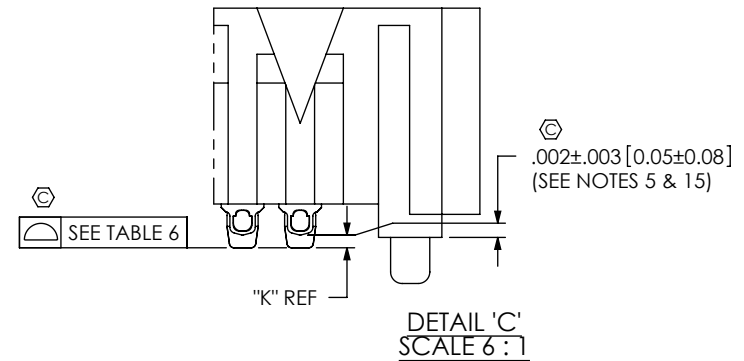
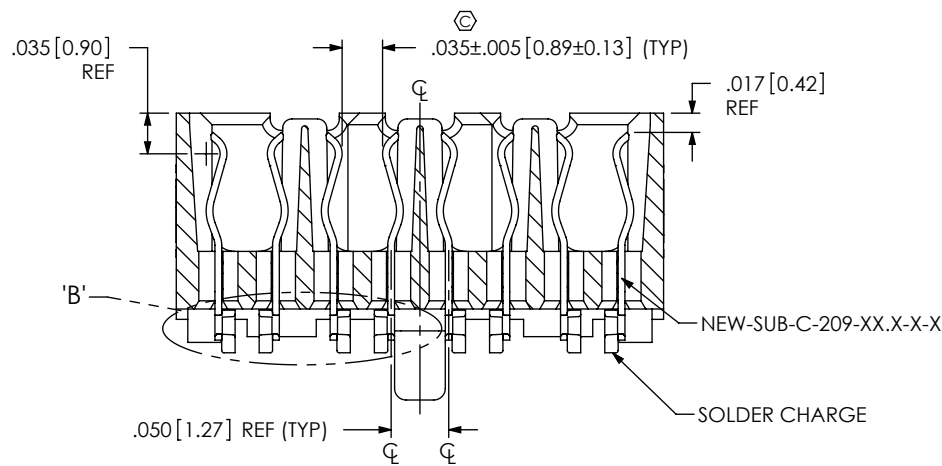
No OF POS.	"A"	"B"	"C"	"D"	"E"
<input type="checkbox"/> -10	.729 [18.52]	.670 [17.02]	9	.4500 [11.430]	.6410 [16.281]
<input checked="" type="checkbox"/> -15	.979 [24.97]	.920 [23.37]	14	.7000 [17.780]	.8910 [22.631]
** -19	1.179 [29.85]	1.120 [28.45]	18	.9000 [22.860]	1.0910 [27.711]
-20	1.229 [31.22]	1.170 [29.72]	19	.9500 [24.130]	1.1410 [28.981]
<input type="checkbox"/> -25	1.479 [37.57]	1.420 [36.07]	24	1.2000 [30.480]	1.3910 [35.331]
-30	1.729 [43.92]	1.670 [42.42]	29	1.4500 [36.830]	1.6410 [41.681]
-40	2.229 [56.62]	2.170 [55.12]	39	1.9500 [49.530]	2.1410 [54.381]
-50	2.729 [69.32]	2.670 [67.82]	49	2.4500 [62.230]	2.6410 [67.081]

STACK HEIGHT								
SEAF LEAD	SEAM LEAD STYLE							
	-02.0	-03.0	-03.5	-06.5	-07.0	-09.0	-11.0	* -13.0
-05.0	7mm	8mm	8.5mm	11.5mm	12mm	14mm	16mm	18mm
-06.0	8mm	9mm	9.5mm	12.5mm	13mm	15mm	17mm	19mm
-06.5	8.5mm	9.5mm	10mm	13mm	13.5mm	15.5mm	17.5mm	19.5mm
***-07.5	9.5mm	10.5mm	11mm	14mm	14.5mm	16.5mm	18.5mm	20.5mm

(\*\*\*= NOT TOOLED)

BY: BRATCHER 05/27/2004	SHEET 1 OF 5
-------------------------	--------------

F:\DWG\MISC\MKTG\SEAF-XX-XX.X-XX-XX-X-A-XX-K-TR-MKT SI.DDRW



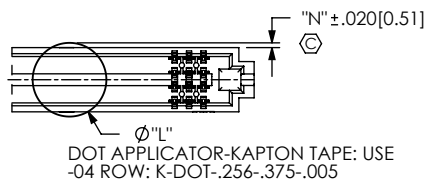
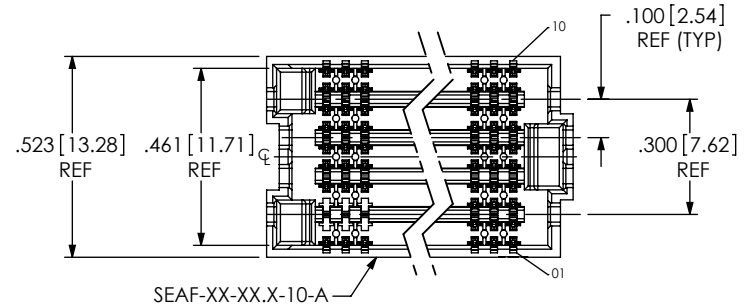
SECTION "A"-"A"  
SCALE 6:1

TABLE 6	
POSITION	COPLANARITY
-10 TO -30	.006 [0.15]
-40	.009 [0.23]
-50	.009 [0.23]

TABLE 7					
LEAD STYLE	"H"		"J"		"K"
-05.0	.0530 - .0590	[1.346] - [1.499]	.0410 - .0470	[1.041] - [1.194]	.011 [0.28]
-06.0	.0530 - .0620	[1.346] - [1.575]	.0380 - .0470	[.965] - [1.194]	.011 [0.28]
-06.5	.0530 - .0645	[1.346] - [1.638]	.0355 - .0470	[.902] - [1.194]	.011 [0.28]
*** -07.5	.0530 - .0645	[1.346] - [1.638]	.0355 - .0470	[.902] - [1.194]	.011 [0.28]

(\*\*\*= NOT TOOLED)

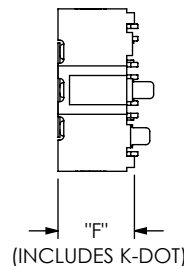
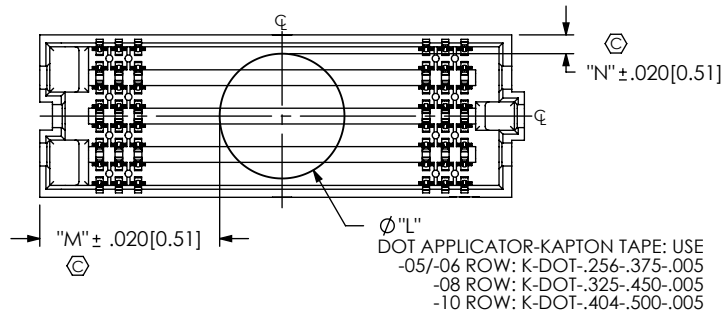
FIG 2  
-10: 10 ROW  
(SAME AS FIG 1, EXCEPT AS SHOWN)  
(SEAF-20-05.0-XX-10-1-A-XX-K-TR SHOWN)  
(SOME CENTER FEATURES REMOVED FOR CLARITY)



-04 ROW ONLY  
(SAME AS FIG 3, EXCEPT AS SHOWN)

TABLE 8										
ROWS	"L"	"M"								"N"
		□ 10 POS	⊠ 15 POS	** 19 POS	20 POS	⏏ 25 POS	30 POS	40 POS	50 POS	
-04	.256 [6.50]	.254 [6.44]	.379 [9.62]	.479 [12.16]	.504 [12.79]	.629 [15.97]	.754 [19.14]	1.004 [25.49]	1.254 [31.84]	.017 [ .43]
-05, -06	.256 [6.50]	.254 [6.44]	.379 [9.62]	.479 [12.16]	.504 [12.79]	.629 [15.97]	.754 [19.14]	1.004 [25.49]	1.254 [31.84]	.034 [ .86]
-08	.325 [8.25]	.219 [5.57]	.344 [8.74]	.444 [11.28]	.469 [11.92]	.594 [15.09]	.719 [18.27]	.969 [24.62]	1.219 [30.97]	.049 [1.24]
-10	.404 [10.25]	.180 [4.57]	.305 [7.74]	.405 [10.28]	.430 [10.92]	.555 [14.09]	.680 [17.27]	.930 [23.62]	1.180 [29.97]	.060 [1.52]

FIG 3  
-K: POLYIMIDE PAD  
(SEAF-20-05.0-XX-08-1-A-XX-K-TR SHOWN)  
(SAME AS FIG. 1, EXCEPT AS SHOWN)  
(SOME CENTER FEATURES REMOVED FOR CLARITY)



PROPRIETARY NOTE  
THIS DOCUMENT CONTAINS INFORMATION  
CONFIDENTIAL AND PROPRIETARY TO  
SAMTEC, INC. AND SHALL NOT BE REPRODUCED  
OR TRANSFERRED TO OTHER DOCUMENTS OR  
DISCLOSED TO OTHERS OR USED FOR ANY  
PURPOSE OTHER THAN THAT WHICH IT WAS  
OBTAINED WITHOUT THE EXPRESSED WRITTEN  
CONSENT OF SAMTEC, INC.

DO NOT SCALE DRAWING

SHEET SCALE: 2:1

**samtec**

520 PARK EAST BLVD, NEW ALBANY, IN 47150  
PHONE: 812-944-6733 FAX: 812-948-5047  
e-Mail: info@SAMTEC.com code 55322

DESCRIPTION:  
.050 PITCH SOCKET ARRAY ASSEMBLY

DWG. NO.  
**SEAF-XX-XX.X-XX-XX-X-A-XX-K-TR**

BY: BRATCHER 05/27/2004 SHEET 2 OF 5

FIG 4  
-06: 6 ROW  
(SAME AS FIG 1, EXCEPT AS SHOWN)  
(SEAF-20-05.0-XX-06-1-A-XX-K-TR SHOWN)  
(SOME CENTER FEATURES REMOVED FOR CLARITY)

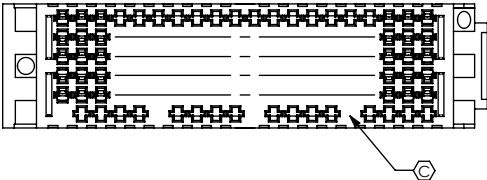
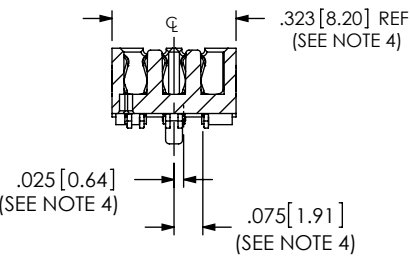
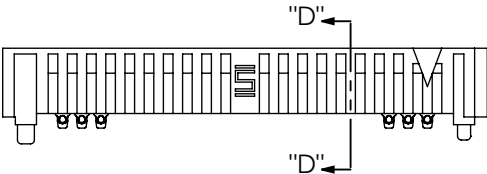
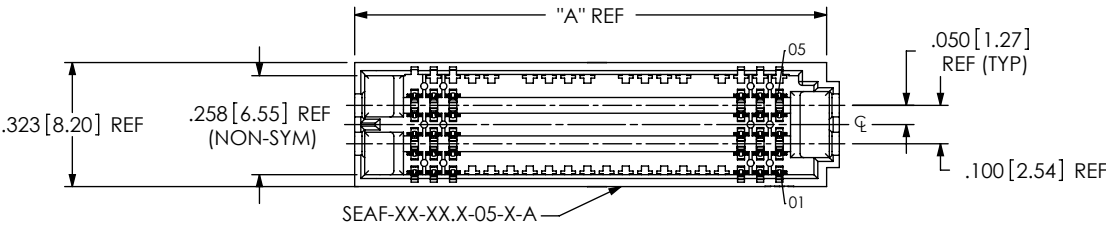
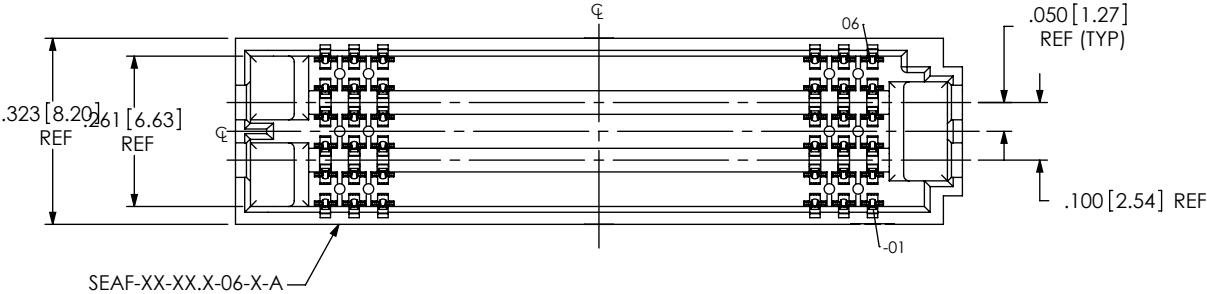


FIG 5  
-05: 5 ROW  
(SAME AS FIG 4, EXCEPT AS SHOWN)  
(SEAF-20-05.0-XX-05-1-A-XX-K-TR SHOWN)  
(SOME CENTER FEATURES REMOVED FOR CLARITY)

<p>PROPRIETARY NOTE</p> <p>THIS DOCUMENT CONTAINS INFORMATION CONFIDENTIAL AND PROPRIETARY TO SAMTEC, INC. AND SHALL NOT BE REPRODUCED OR TRANSFERRED TO OTHER DOCUMENTS OR DISCLOSED TO OTHERS OR USED FOR ANY PURPOSE OTHER THAN THAT WHICH IT WAS OBTAINED WITHOUT THE EXPRESSED WRITTEN CONSENT OF SAMTEC, INC.</p> <p>DO NOT SCALE DRAWING</p> <p>SHEET SCALE: 1:0.333333</p>		
	520 PARK EAST BLVD, NEW ALBANY, IN 47150 PHONE: 812-944-6733 FAX: 812-948-5047 e-Mail info@SAMTEC.com code 55322	
	DESCRIPTION: .050 PITCH SOCKET ARRAY ASSEMBLY	
	DWG. NO. SEAF-XX-XX.X-XX-XX-X-A-XX-K-TR	
BY: BRATCHER 05/27/2004		SHEET 3 OF 5

FIG 7  
06 ROW x 19 POS.  
(SEE NOTE 12)  
(ONLY AVAILABLE -06.5 LEADSTYLE & -06 ROW)  
(SEAF-20-06.5-XX-06-1-XX-K-TR SHOWN)  
(SAME AS FIGS 1 & 4 EXCEPT AS SHOWN )  
(SOME CENTER FEATURES REMOVED FOR CLARITY)

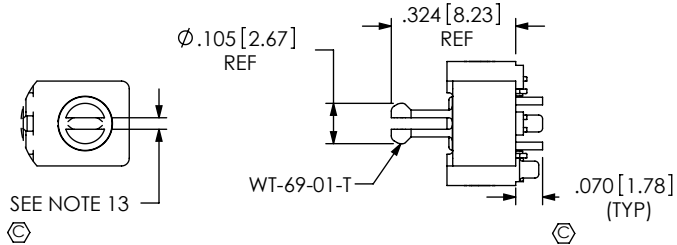
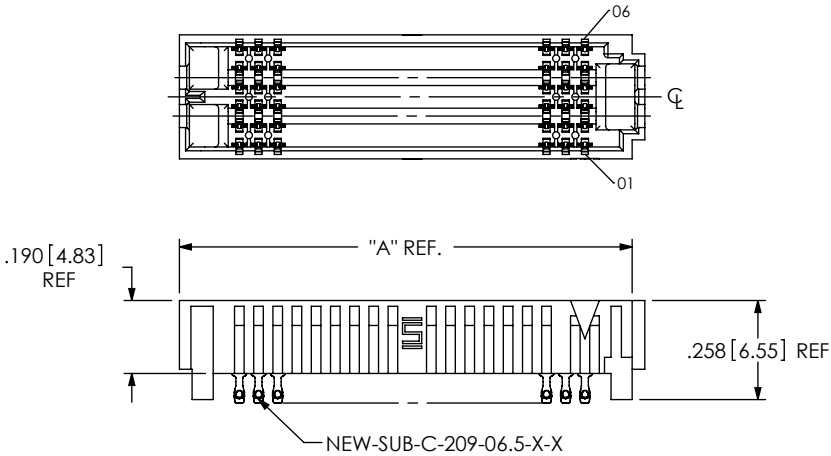


FIG 9  
\*\*\*\*\*RP OPTION  
(SEAF-20-05.0-XX-06-1-A-RP-K-TR SHOWN)  
(SOME CENTER FEATURES REMOVED FOR CLARITY)  
(SAME AS FIG 7 EXCEPT AS SHOWN )  
(-RP OPTION VALID FOR SEAR MATE ONLY)  
(ONLY AVAILABLE WITH -05.0 LEAD STYLE 6, 8 & 10 ROW)

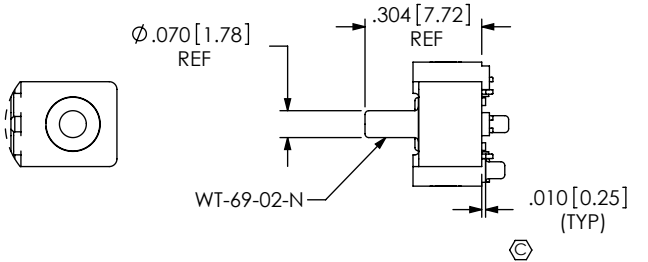


FIG 10  
-PP OPTION  
(SEAF-20-05.0-XX-06-1-A-PP-K-TR SHOWN)  
(SOME CENTER FEATURES REMOVED FOR CLARITY)  
(SAME AS FIG 7 EXCEPT AS SHOWN )  
(-PP OPTION VALID FOR SEAR MATE ONLY)  
(ONLY AVAILABLE WITH -05.0 LEAD STYLE 6, 8 & 10 ROW)

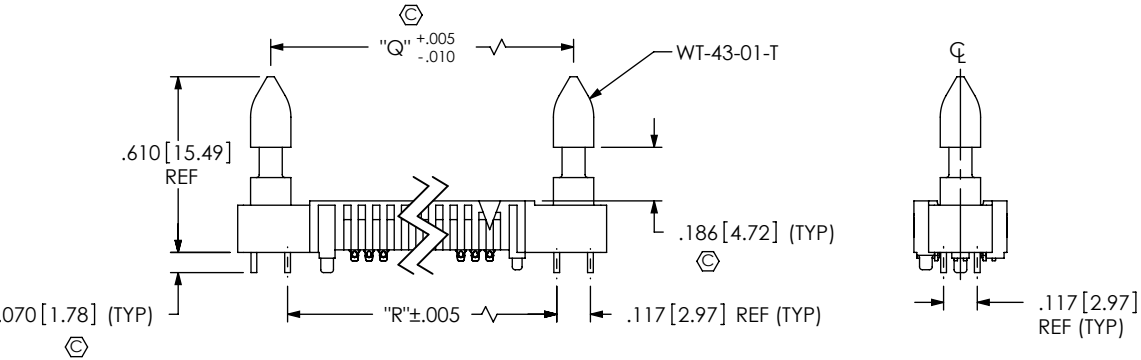
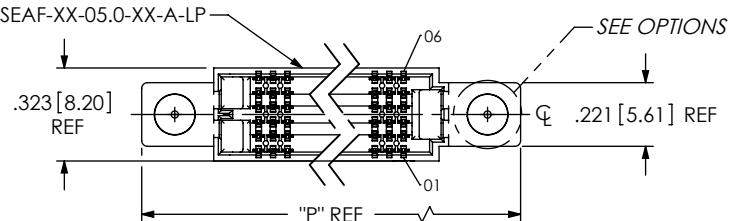


FIG 8  
-LP OPTION  
(SEAF-20-05.0-XX-06-1-A-LP-K-TR SHOWN)  
(SOME CENTER FEATURES REMOVED FOR CLARITY)  
(SAME AS FIG 6 EXCEPT AS SHOWN )  
(-LP OPTION REQUIRED FOR SEAC MATE ONLY)  
(ONLY AVAILABLE WITH -05.0 LEAD STYLE -04, -06, -08 & -10 ROW)

TABLE 9			
No OF POS.	"P"	"Q"	"R"
□ -10	1.262 [32.05]	1.033 [26.24]	.9160 [23.266]
⊠ -15	1.512 [38.40]	1.283 [32.59]	1.1660 [29.616]
** -19	1.712 [43.48]	1.483 [37.67]	1.3660 [34.696]
-20	1.762 [44.75]	1.533 [38.94]	1.4160 [35.966]
▤ -25	2.012 [51.10]	1.783 [45.29]	1.6660 [42.316]
-30	2.262 [57.45]	2.033 [51.64]	1.9160 [48.666]
-40	2.762 [70.15]	2.533 [64.34]	2.4160 [61.366]
-50	3.262 [82.85]	3.033 [77.04]	2.9160 [74.066]

PROPRIETARY NOTE

THIS DOCUMENT CONTAINS INFORMATION CONFIDENTIAL AND PROPRIETARY TO SAMTEC, INC. AND SHALL NOT BE REPRODUCED OR TRANSFERRED TO OTHER DOCUMENTS OR DISCLOSED TO OTHERS OR USED FOR ANY PURPOSE OTHER THAN THAT WHICH IT WAS OBTAINED WITHOUT THE EXPRESSED WRITTEN CONSENT OF SAMTEC, INC.

DO NOT SCALE DRAWING

SHEET SCALE: 1:0.333333

520 PARK EAST BLVD, NEW ALBANY, IN 47150  
PHONE: 812-944-6733 FAX: 812-948-5047  
e-Mail: info@SAMTEC.com code 55322

DESCRIPTION:  
.050 PITCH SOCKET ARRAY ASSEMBLY

DWG. NO.  
SEAF-XX-XX.X-XX-XX-X-A-XX-K-TR

BY: BRATCHER 05/27/2004 SHEET 4 OF 5

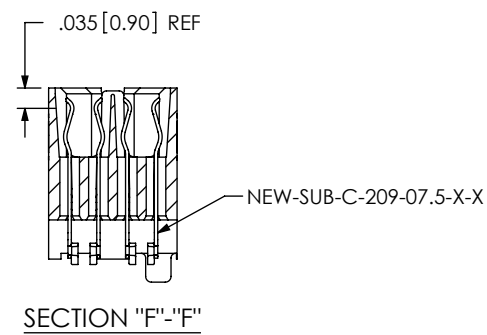
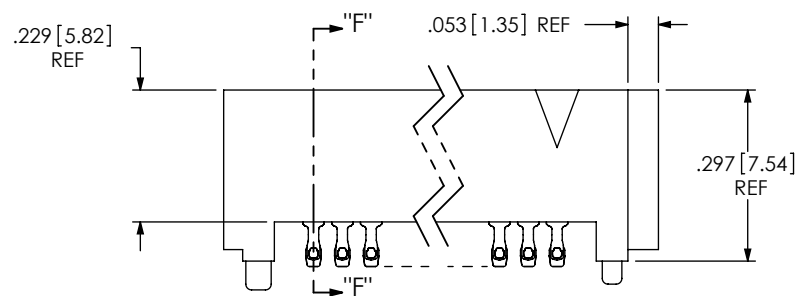
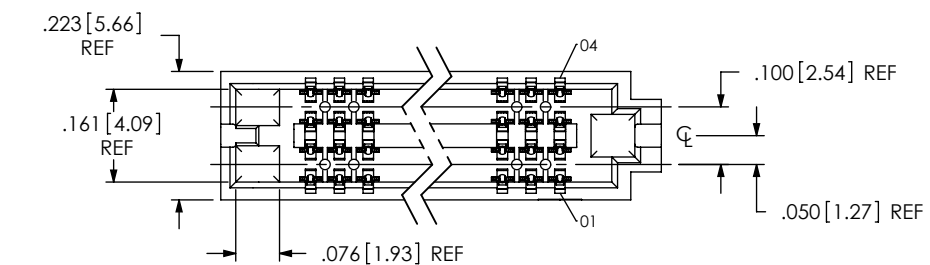


FIG 11  
-04: 4 ROW  
(SEAF-30-07.5-XX-04-1-A-XX-K-TR SHOWN)  
(SOME CENTER FEATURES REMOVED FOR CLARITY)  
(SAME AS FIG 1 EXCEPT AS SHOWN )

<p>PROPRIETARY NOTE</p> <p>THIS DOCUMENT CONTAINS INFORMATION CONFIDENTIAL AND PROPRIETARY TO SAMTEC, INC. AND SHALL NOT BE REPRODUCED OR TRANSFERRED TO OTHER DOCUMENTS OR DISCLOSED TO OTHERS OR USED FOR ANY PURPOSE OTHER THAN THAT WHICH IT WAS OBTAINED WITHOUT THE EXPRESSED WRITTEN CONSENT OF SAMTEC, INC.</p> <p>DO NOT SCALE DRAWING</p> <p>SHEET SCALE: 1:0.333333</p>		
	520 PARK EAST BLVD., NEW ALBANY, IN 47150 PHONE: 812-944-6733 FAX: 812-948-5047 e-Mail info@SAMTEC.com code 55322	
	DESCRIPTION: .050 PITCH SOCKET ARRAY ASSEMBLY	
	DWG. NO. SEAF-XX-XX.X-XX-XX-X-A-XX-K-TR	
BY: BRATCHER 05/27/2004		SHEET 5 OF 5