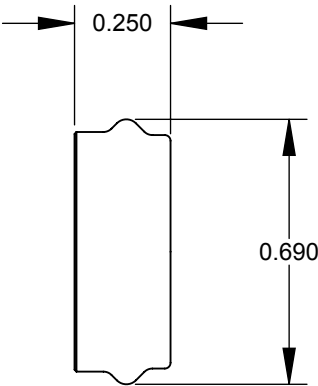


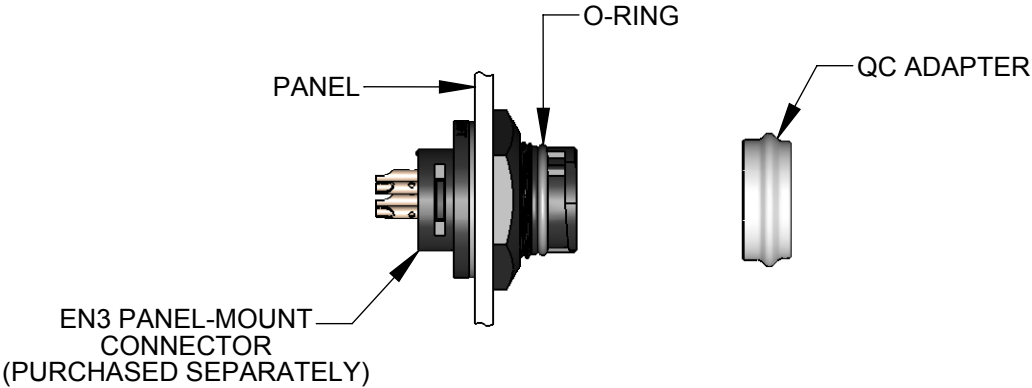
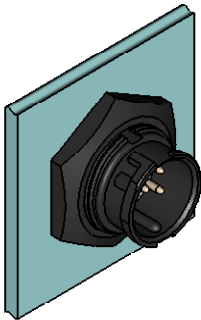
QC ADAPTER



O-RING



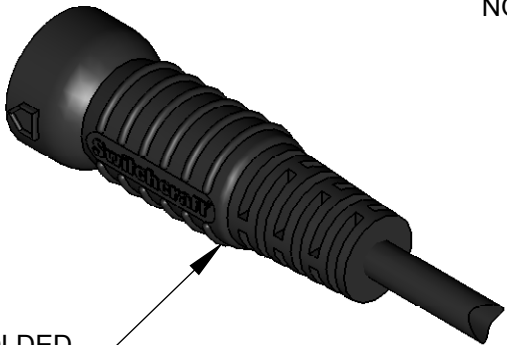
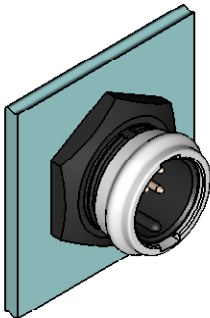
- NOTES:
- 1. DIMENSIONS SHOWN FOR REFERENCE ONLY
 - 2. MATERIAL:
QC ADAPTER - THERMOPLASTIC, LIGHT BEIGE COLOR STANDARD.
O-RING - NEOPRENE RUBBER, BLACK COLOR
(LUBRICATED WITH SYNTHETIC LUBRICANT)
 - 3. THIS PRODUCT IS RoHS COMPLIANT



EN3PQCA INSTALLATION STEPS:

- 1. INSTALL O-RING IN THE GROOVE AT THE FRONT OF CONNECTOR.
- 2. ALIGN QC ADAPTER ON CONNECTOR, PUSH IN, AND ROTATE CLOCKWISE UNTIL DETENT ENGAGES.
- 3. EN3 PANEL-MOUNT CONNECTOR WITH QC ADAPTER INSTALLED TO BE MATED ONLY WITH EN3 CORD CONNECTOR OVERMOLDED FOR QUICK CONNECT / DISCONNECT APPLICATION.

NOTE: TO REVERT BACK TO STANDARD CONNECTOR MATING, REMOVE ONLY THE QC ADAPTER BY ROTATING COUNTERCLOCKWISE. NO NEED TO REMOVE THE O-RING.



EN3 CORD CONNECTOR OVERMOLDED FOR QUICK CONNECT / DISCONNECT APPLICATIONS (PURCHASED SEPARATELY)

CUSTOMER DRAWING

						THIS DRAWING DESCRIBES A DESIGN CONSIDERED PROPRIETARY IN NATURE, DEVELOPED AND MANUFACTURED BY SWITCHCRAFT INC. AND IS RELEASED ON A CONFIDENTIAL BASIS FOR IDENTIFICATION PURPOSES ONLY.															
					UNLESS OTHERWISE SPECIFIED 1. ALL DIMENSIONS IN INCHES - TWO PLACE DECIMALS ±0.02 - THREE PLACE DECIMALS ±0.005	SIZE	WIDTH		MULT		LBS/M		TEMPER								
						FINISH					MATERIAL										
						SPEC No.					SPEC No.										
						FIRST USED ON				SCALE		Switchcraft®									
										2:1											
						DATE DRAWN	BY	CHKD		APVD		SHEET 1 OF 1									
						04/07/10	PNK	PNK		SRC											
A	ECO# 26546	05/17/10	PNK	SRC			05/17/10		05/17/10												
REV	ECO NUMBER	DATE	BY	APVD							PART No.					REV					
REVISIONS						DO NOT SCALE DRAWING					QC ADAPTER					EN3PQCA					A
											EN3 PANEL-MOUNT , RoHS										

Mouser Electronics

Authorized Distributor

Click to View Pricing, Inventory, Delivery & Lifecycle Information:

Switchcraft:

[EN3PQCA](#) [EN3POS20](#) [EN3POS16](#)