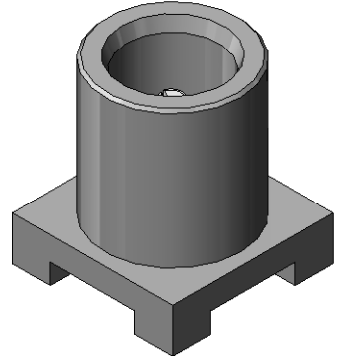
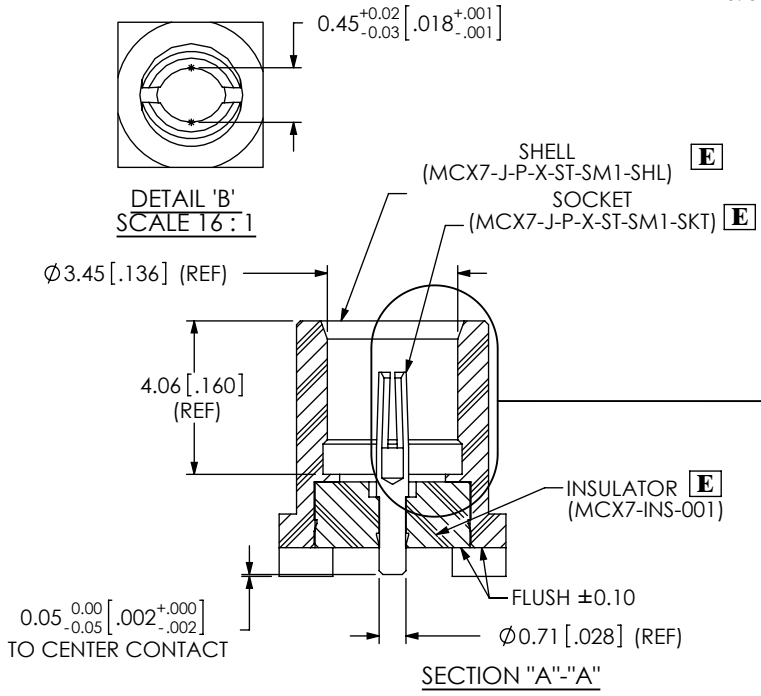


DESIGNED & DIMENSIONED  
IN MILLIMETERS[INCHES]



MCX7-J-P-H-ST-SM1 (SHOWN)

**MCX7-J-P-X-ST-SM1**

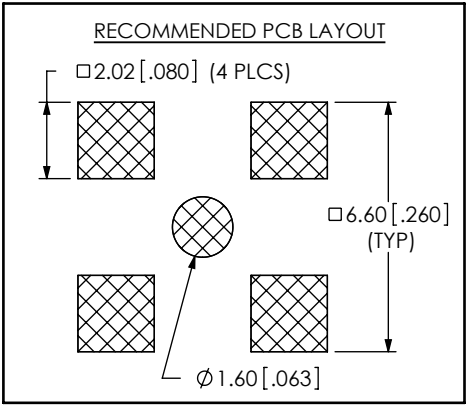
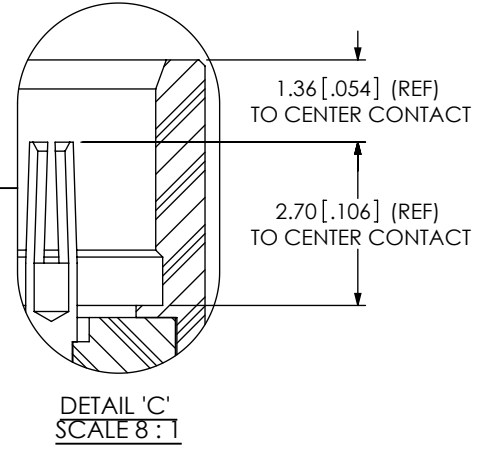
GENDER  
-J: JACK

TYPE  
-P: PCB

TERMINATION  
-SM1: SURFACE MOUNT

ORIENTATION  
-ST: STRAIGHT

PLATING SPECIFICATION **E**  
-H: HEAVY GOLD (SEE NOTE 6 & 7)  
(MCX7-J-P-H-ST-SM1-SKT)  
(MCX7-J-P-F-ST-SM1-SHL)  
(MCX7-INS-001)



- NOTES:
1. REPRESENTS A CRITICAL DIMENSION.
  2. PUSHOUT FORCE FOR INSULATOR: 20 N [4.5 LB] MIN.
  3. PUSHOUT FORCE FOR CENTER CONTACT: 10 N [2.25 LB] MIN.
  4. PARTS TO BE PACKAGED IN TRAYS; IF QUANTITY IS LESS THAN HALF TRAY, PARTS TO BE PACKAGED IN COHESIVE FOAM.
  5. RoHS COMPLIANT.
  6. COMPONENT PLATING DESIGNATIONS:  
-H: 0.00076[0.000030] (MIN) GOLD OVER 0.00127[0.000050] (MIN) NICKEL.  
-F: 0.00008[0.000003] (MIN) GOLD OVER 0.00127[0.000050] (MIN) NICKEL.
  7. ASSEMBLY PLATING DESIGNATIONS:  
-H: (CENTER CONTACT)-H:  
(OUTER CONTACT)-F:

F:\DWG\MISC\MKTG\MCX7-J-P-X-ST-SM1-MKT.SLDDRW

UNLESS OTHERWISE SPECIFIED,  
DIMENSIONS ARE IN MILLIMETERS.

TOLERANCES ARE:

DECIMALS	ANGLES
.X: ±0.3 [0.1]	2°
.XX: ±0.13 [0.05]	
.XXX: ±0.051 [0.020]	

PROPRIETARY NOTE  
THIS DOCUMENT CONTAINS INFORMATION  
CONFIDENTIAL AND PROPRIETARY TO  
SAMTEC, INC. AND SHALL NOT BE REPRODUCED  
OR TRANSFERRED TO OTHER DOCUMENTS OR  
DISCLOSED TO OTHERS OR USED FOR ANY  
PURPOSE OTHER THAN THAT WHICH IT WAS  
OBTAINED WITHOUT THE EXPRESSED WRITTEN  
CONSENT OF SAMTEC, INC.

MATERIAL: SEE TABLE 1

DO NOT SCALE DRAWING

SHEET SCALE: 1:0.2

520 PARK EAST BLVD, NEW ALBANY, IN 47150  
PHONE: 812-944-6733 FAX: 812-948-5047  
e-Mail: info@SAMTEC.com code: 55322

DESCRIPTION: TRUE 75 OHM, MCX STRAIGHT, SMT JACK	
DWG. NO. <b>E</b>	MCX7-J-P-X-ST-SM1
BY: R MUSSER	02/06/2008
SHEET 1 OF 1	