

ARCONIC
Innovation, engineered.

Nose Assembly to Tool

Adapter Matrix and Drawings

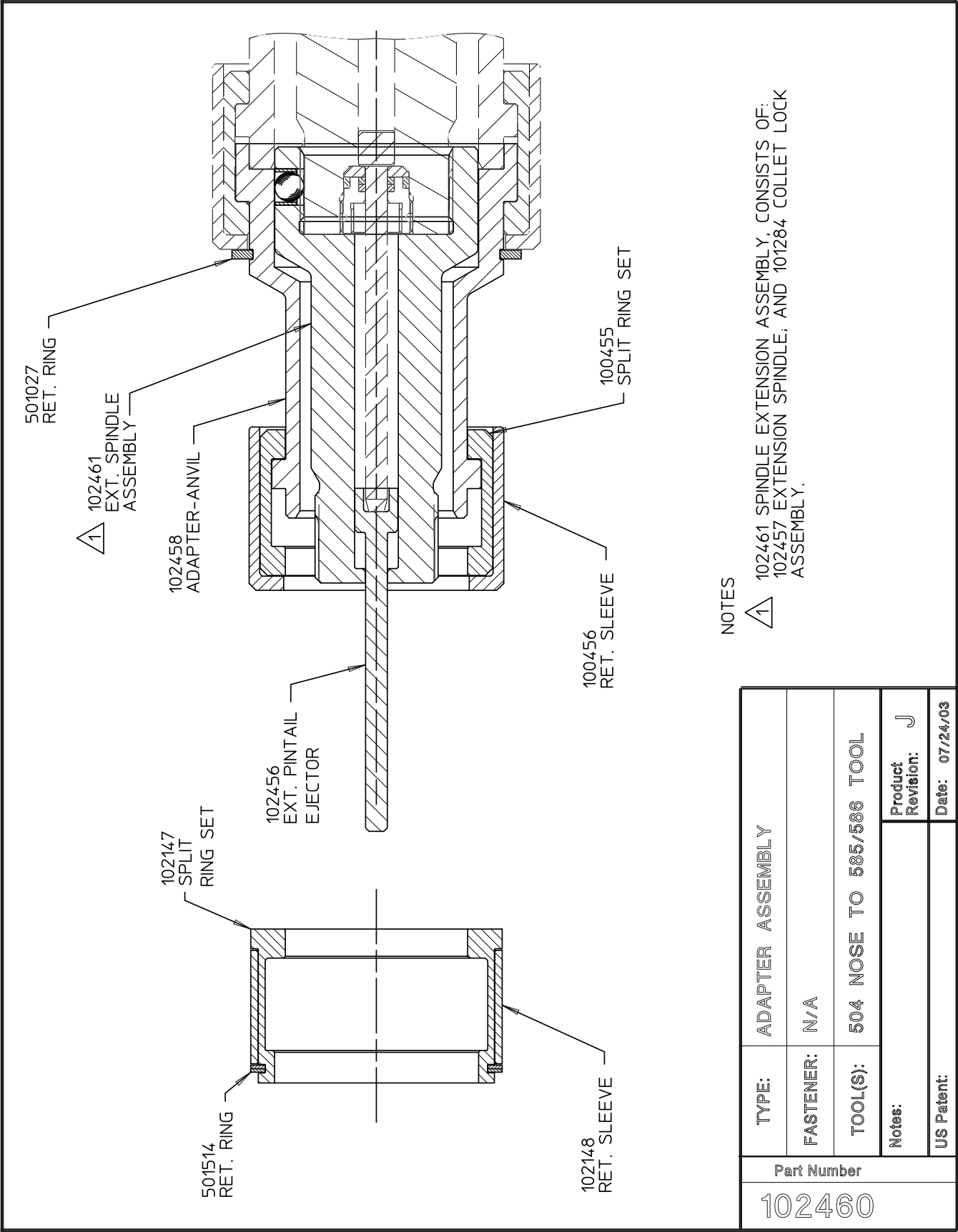
December 13, 2017
HK1084

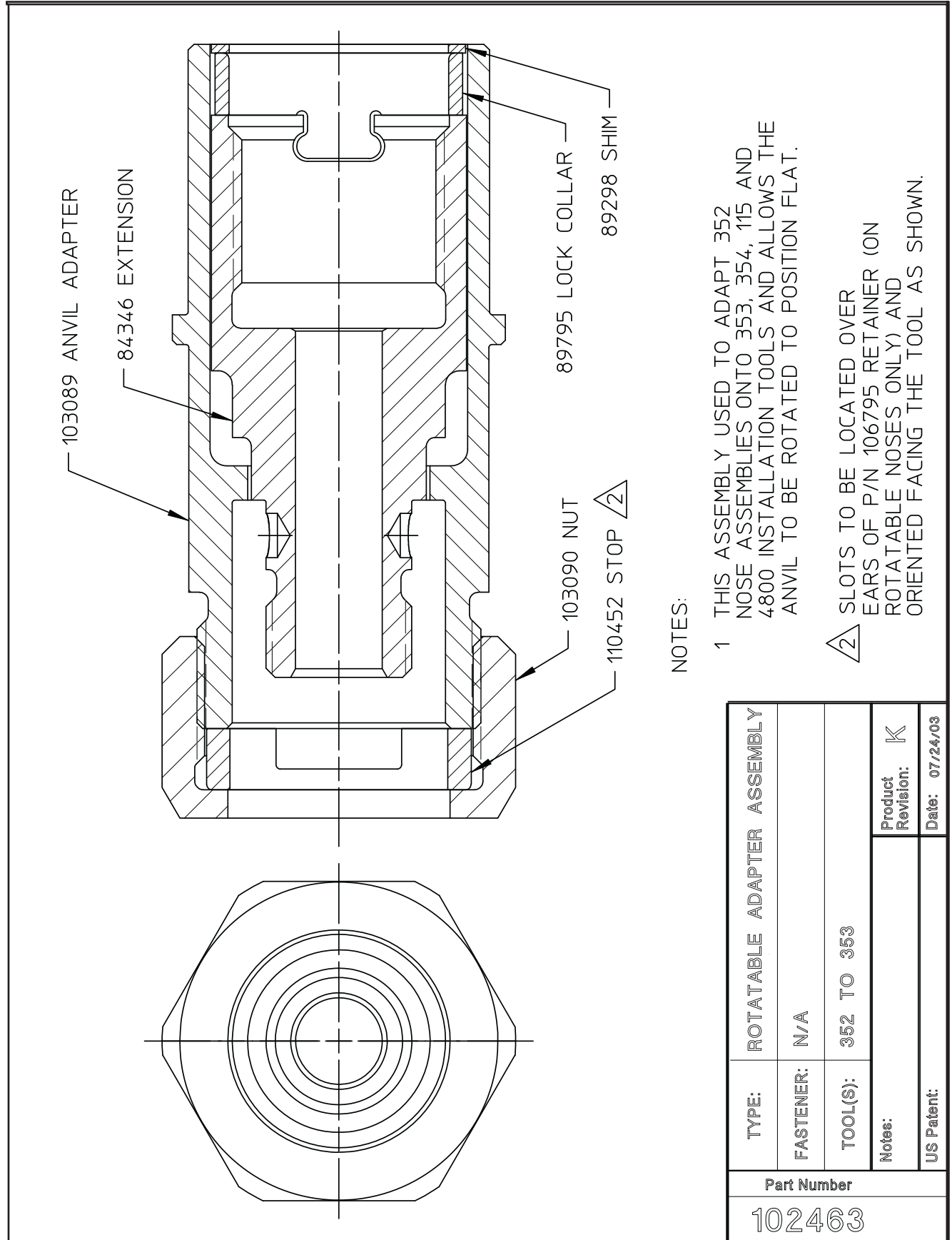


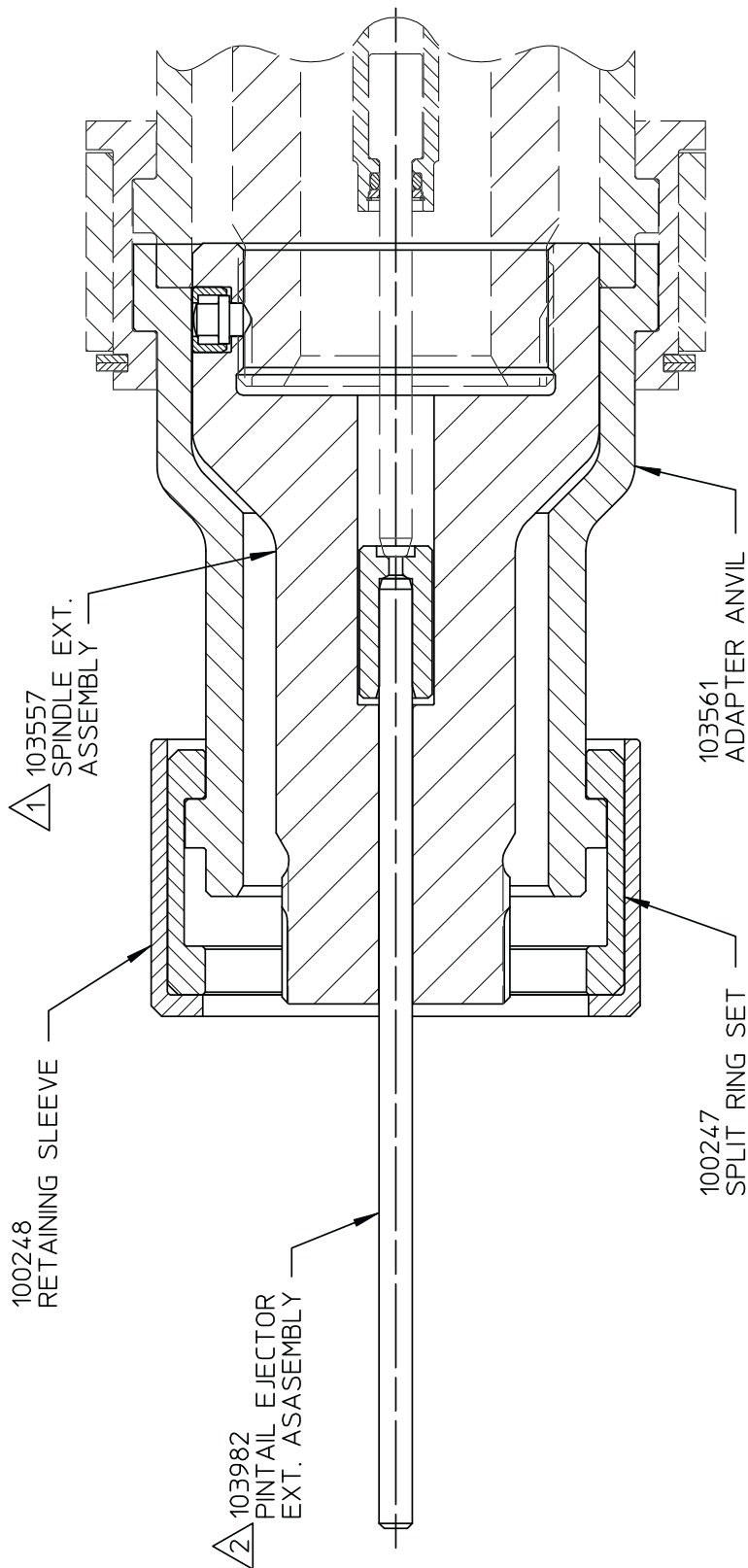


For each Adapter Assembly, a reference drawing is supplied on the following pages unless otherwise stated. If a Stroke Limiter is required, the part number is listed under "Comments". If no part number is listed, and a Stroke Limiter is required, please contact your local distributor, or contact us directly to obtain the correct part number.

PART NO.	NOSE ASSEMBLY TYPE	TOOL TYPE	COMMENTS	PAGE
102460	5901 & 2620	585 & 586		3
102463	352 style Inline	353, 245, 255		4
103553	505, 585, 586	506		5
103554	506 style	507		6
104406	350, 352 Inline	200		7
104627	352 Rotatable Adapter	352	Allows 352 Noses to Rotate	8
104632	353 Rotatable Adapter	353	Allows 353 Noses to Rotate	9
113272	Offset for UNIMATIC BR	212, 2480		10-11
117831	99-1500s Rotatable Adapter 99-1500s Rotatable Adapter 99-1500s Rotatable Adapter	245 style 2502-625 2580	Stroke Limiter 118362 Req'd Stroke Limiter Req'd (<i>call for Part No.</i>) Stroke Limiter Req'd (<i>call for Part No.</i>)	12
119327	352 style	G743		13
119400-1	99-3700s & 1700s -05,06,08 Offset 99-3700s & 1700s -05,06,08 Offset	245, 255 style 2580 style	Stroke Limiter 118362 Req'd Stroke Limiter PR2344 Req'd	14
120804	99-1500s Rotatable Adapter 99-1500s Rotatable Adapter	245 style 2580	Stroke Limiter 118362 Req'd Stroke Limiter Req'd (<i>call for Part No.</i>)	15
121395	Spindle/Piston to fit 230 style Noses	245, 255 style		16
121991		HK-150	Connects to TM6CC and TM8CC	n/a
122134	99-1700s -10,12 Lockbolt 99-1700s -10 Lockbolt	2502-625 245, 255 style		17
122140	99-1700s -05,06 Rotatable Adapter	230		18
122140-1	99-3700s	230		19
122140-G83	99-1700s	G83		20
122140-G83-1	99-3700s	G83		21
122145	99-1700s -05,06,08 Rotatable Adap	2480		22
122145-1	99-1700s Offs -05,06 BB/BR Rot.Ad	202, 2012		23
122145-3	99-3700s	244, 2480, 202, 2012		24
122145-4	99-3700s	244		25
122587	99-S456	HK-150		26
122921	99-A, 99-1100, & Olympic series	194, 227		27
123065	353 style	230	1/2" Stroke max	28
123065-1	353 style	244	3/8" Stroke max	29
123437	99-1100s Offset BR	230 ONLY		30
123437-1	99-1100s Offset BR	202, 2012		31
123437-2	HUCKLINCH Offset	202, 2012		32
123437-3	HUCKLINCH Offset	230 ONLY		33
124113	352 style Inline; 1/4 max	206-375, 206-625		34
124113-1	3/8 Pass Thru 353 style noses	208-625		35
124164	99-1700s Offset	252		36
124977	353 style	5901, 2620 style		37
125770	99-1500s Offset	208-625	formerly PR2022	38
126358	Anvil & Collet Extension 352 style	202	length 6.00"	39
126361	Anvil & Collet Extension 352 style	202	length 3.00"	40
127671	244 352 style noses	PT4000	up to & including -06 dia.	41
127715	352 & 2480 style noses	HK-150	with pass thru cap	42
127723	244 352 style noses	PT4000	up to & including -08 dia.	43
127863	Self-Releasing L-suffix noses only	HK-150		44
PR1227	586 style nose Extension		length 6.00"	45



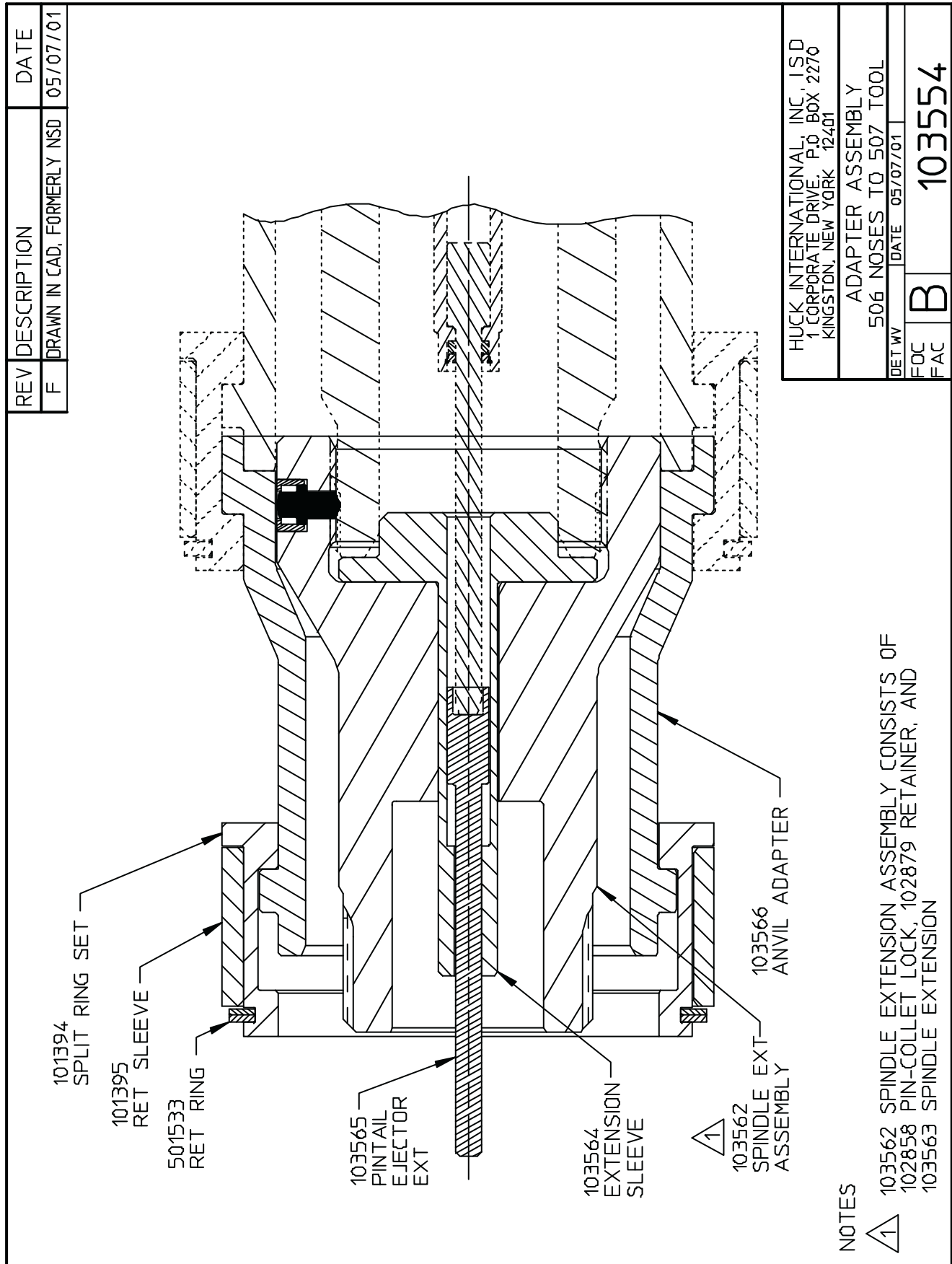




NOTES:

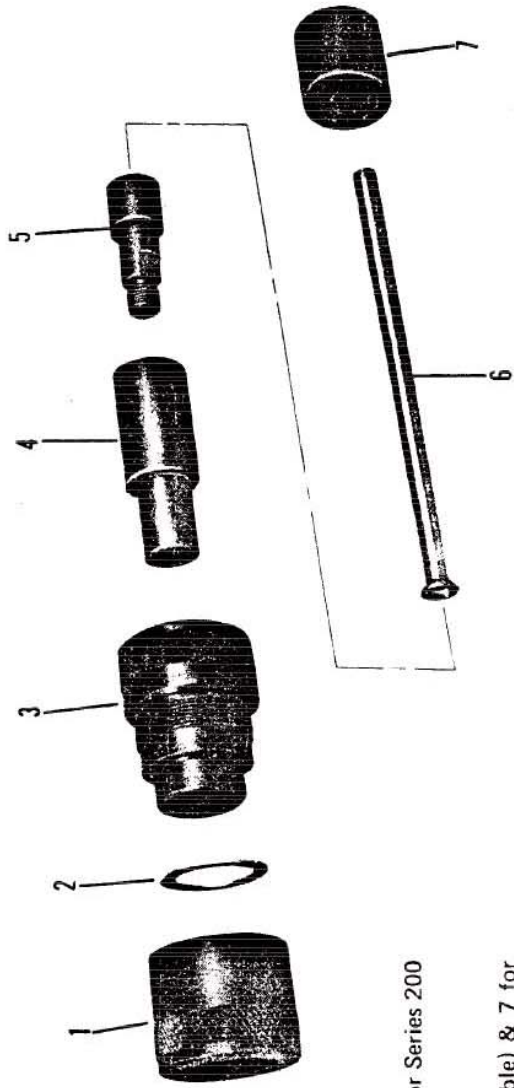
- 1 SPINDLE EXTENSION 103557 CONSISTS OF:
RETAINER 102879, PIN-COLLET LOCK 102880
AND SPINDLE EXTENSION 103558.
- 2 PINTAIL EJECTOR EXTENSION 103982 CONSISTS OF:
ROD 121398, AND ROD END 121399.

Part Number	
TYPE:	ADAPTER
FASTENER:	N/A
TOOL(S):	ADAPTS 505, 585 & 586 TO 506
Notes:	
Product Revision:	F
US Patent:	Date: 07/22/03





DATA SHEET



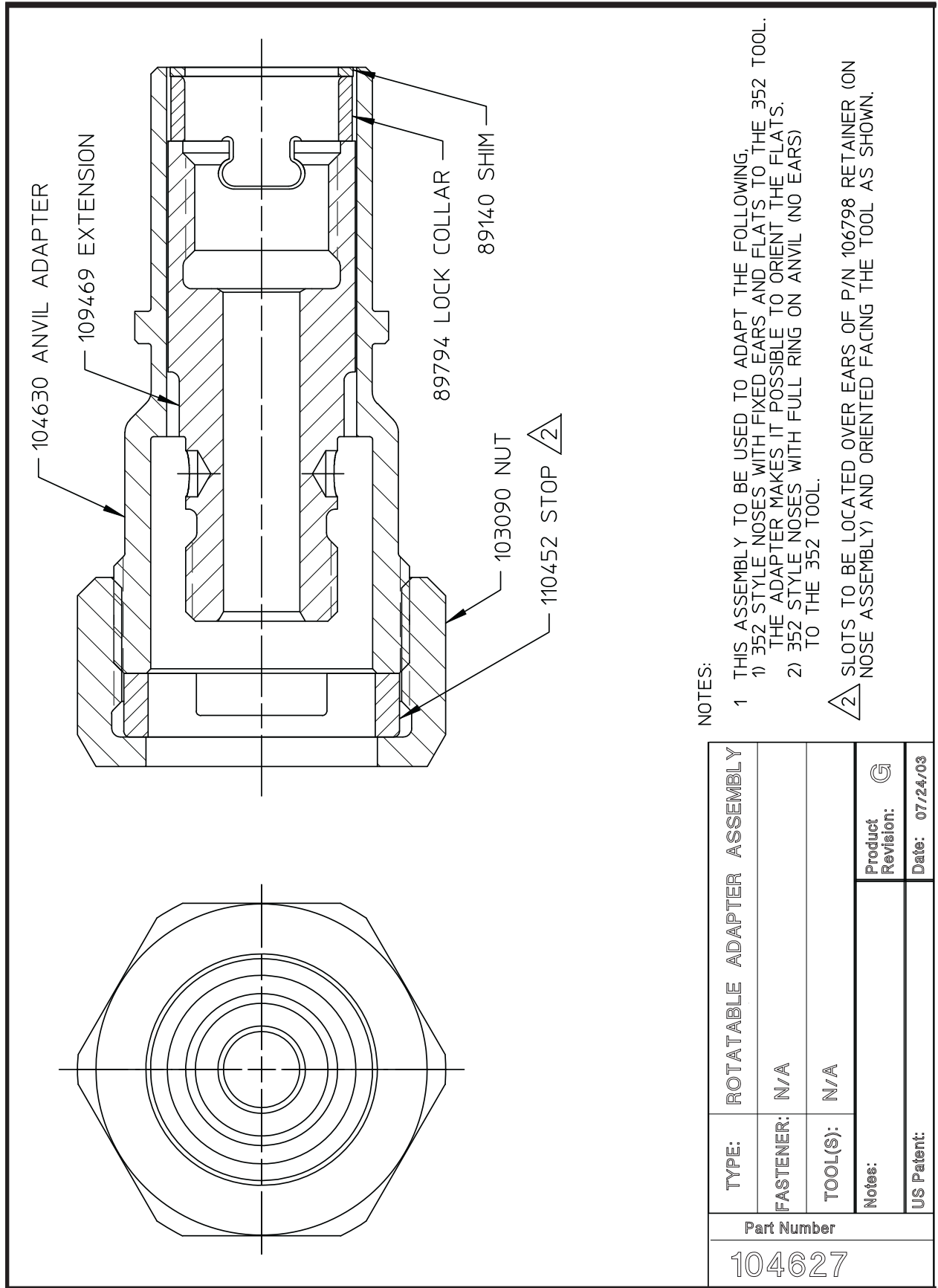
Use Ref. Nos. 1 (& 6 as applicable) for Series 200 Nose Assemblies (Double Action).

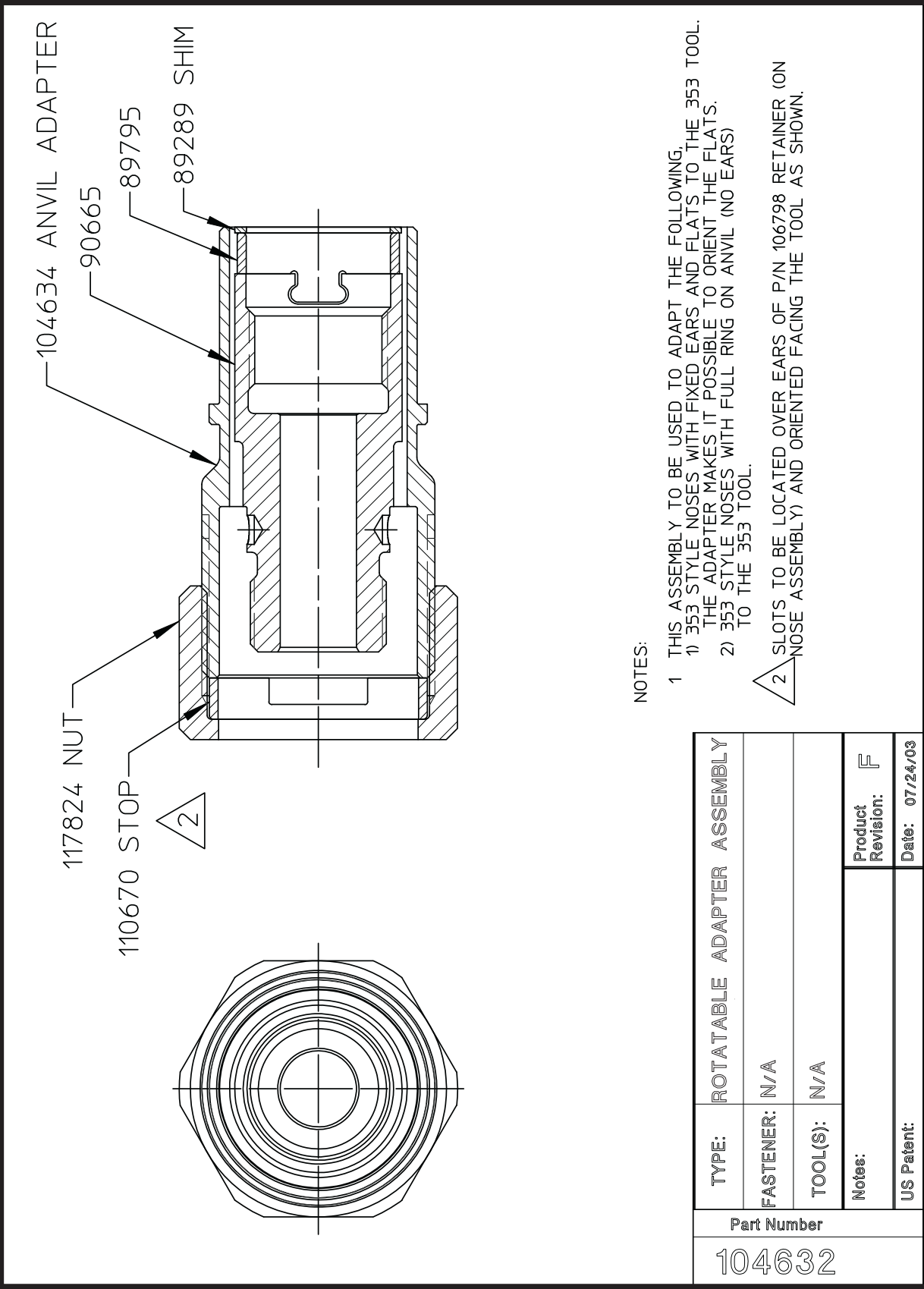
Use Ref. Nos. 1 & 2 (& 6 as applicable) & 7 for Series 352 Nose Assemblies (Single Action).

Use Ref. Nos. 1, 2, 3, 4, 5 (& 6 as applicable) for Series 350 Nose Assemblies (Double Action).

REF. NO.	PART NO.	QUANTITY	PART NAME
5-1	100530	1	Retaining Nut
5-2	101280	1	Stop — Retaining Nut
5-3	100533	1	Nose Adapter
5-4	100532	1	Shift Sleeve
5-5	100531	1	Spindle Reducer
5-6	100534	1	Pintail Tube
5-7	100536	1	Outer Anvil Adapter

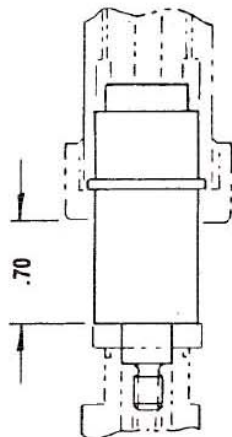
104406		
TYPE: Spindle Adapter FOR: 350-352 Nose Assemblies on 200 TOOL: 200 HIT		
OTHER	PRODUCT REVISION: 1-90	REVISED: 9/19/01





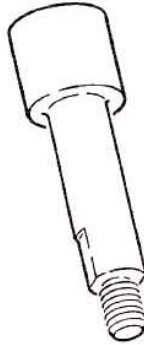


DATA SHEET



.70 in. = 18 mm

113272
Sheet 1 of 2



2



1

Nose Assemblies **** Tool Model**
99-1097; 99-1098; 99-1099 210; 211 ; 212; 223*
99-1100; 99-1101; 99-1102 230; 2400; 2702
*Europe only

REPLACEMENT PARTS			
REF	PART NO.	REQ	DESCRIPTION
1	113136	1	Housing - Adapter
2	100535	1	Reducer - Spindle

SEE OTHER SIDE FOR NOTES AND ASSEMBLY INSTRUCTIONS

113272		TYPE: Offset Nose Assembly Adapter FOR: UNIMATIC B/R Offset N/A TOOL: **	
OTHER		Obscured Replaced By 123437	PRODUCT REVISION: 11-83 REVISED: 9/20/01



HOW TO ATTACH NOSE ASSEMBLY AND ADAPTER ASSEMBLY TO INSTALLATION TOOL

Inspect parts for wear and damage, and replace where required. Wash parts in mineral spirits or isopropyl alcohol only. Use a small pick to clean grooves in jaws. Part numbers on parts must match parts list numbers.

1. Disconnect tool from power source. Use Huck Installation Tool that has been properly prepared per applicable instruction Manual. Remove retaining nut; remove any shims from piston rod with small pick.
2. Screw Spindle Reducer (2) onto tool piston rod and tighten.
3. Slide Housing Adapter (1) over spindle reducer. Slide tool retaining nut over adapter. Do not screw retaining nut on tool.
4. Screw nose assembly housing locknut to back of threads. Hold front face of collet against inside face of anvil housing; screw assembled anvil housing and collet onto housing adapter and spindle reducer until snug - avoid over-tightening. Overtightening pushes piston rearward, thereby reducing tool stroke. See Figure 1 for proper housing adapter position. Position anvil housing and tighten housing locknut; tighten retaining nut.
5. Connect tool to power source. Install fastener in test plate of proper thickness with proper size holes. Inspect installed fastener.

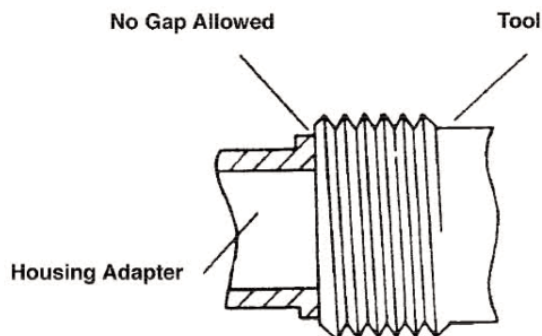
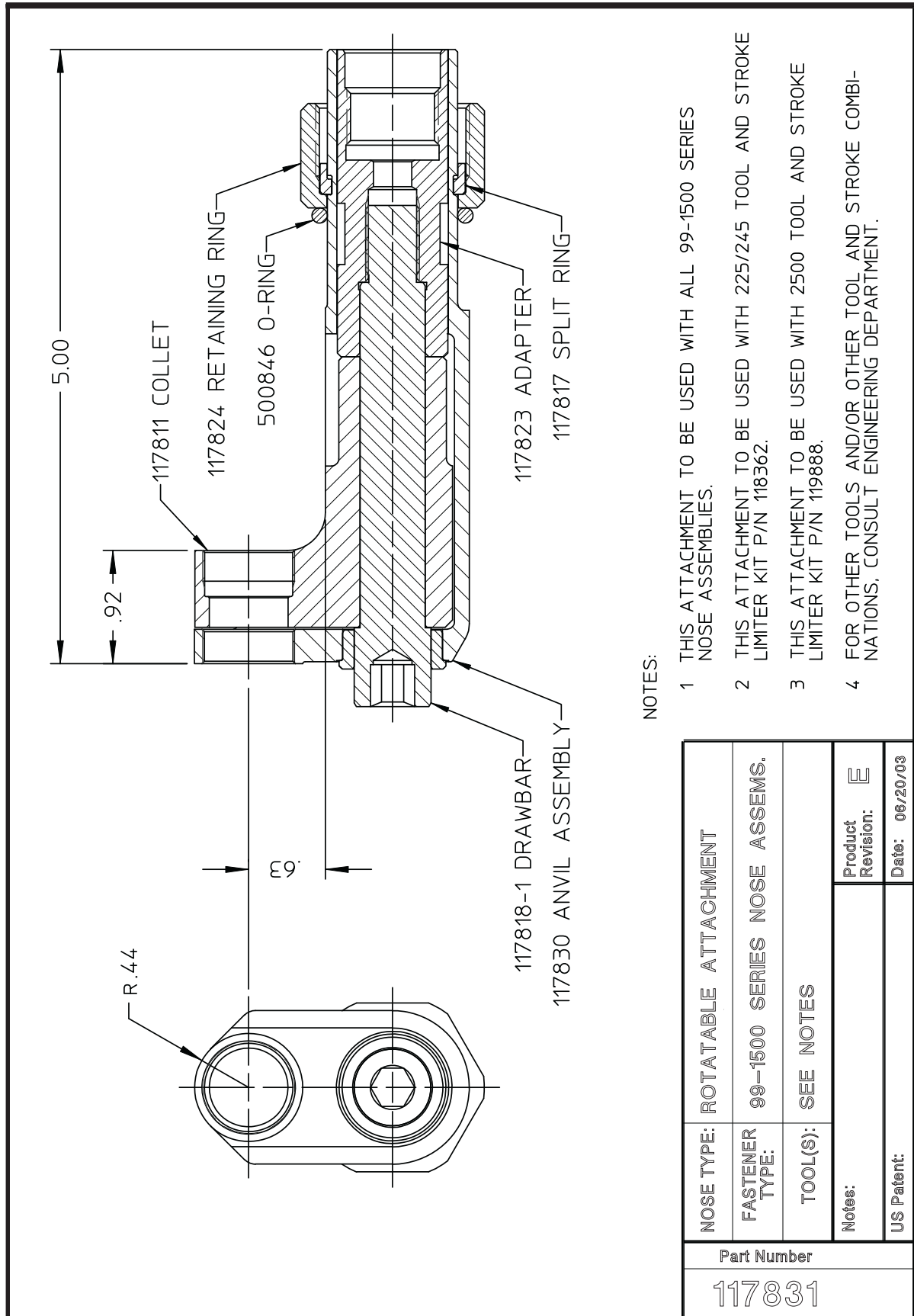
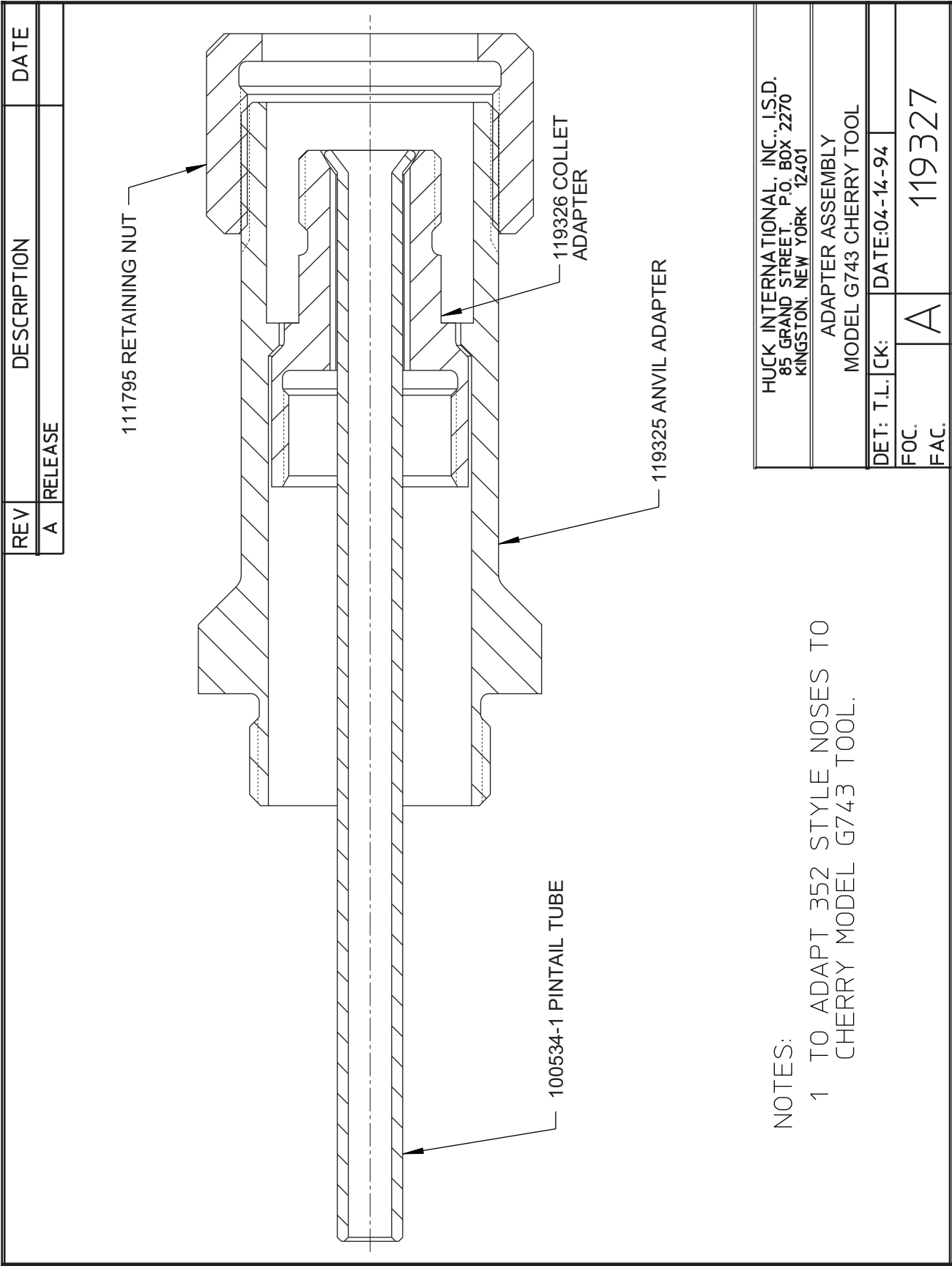
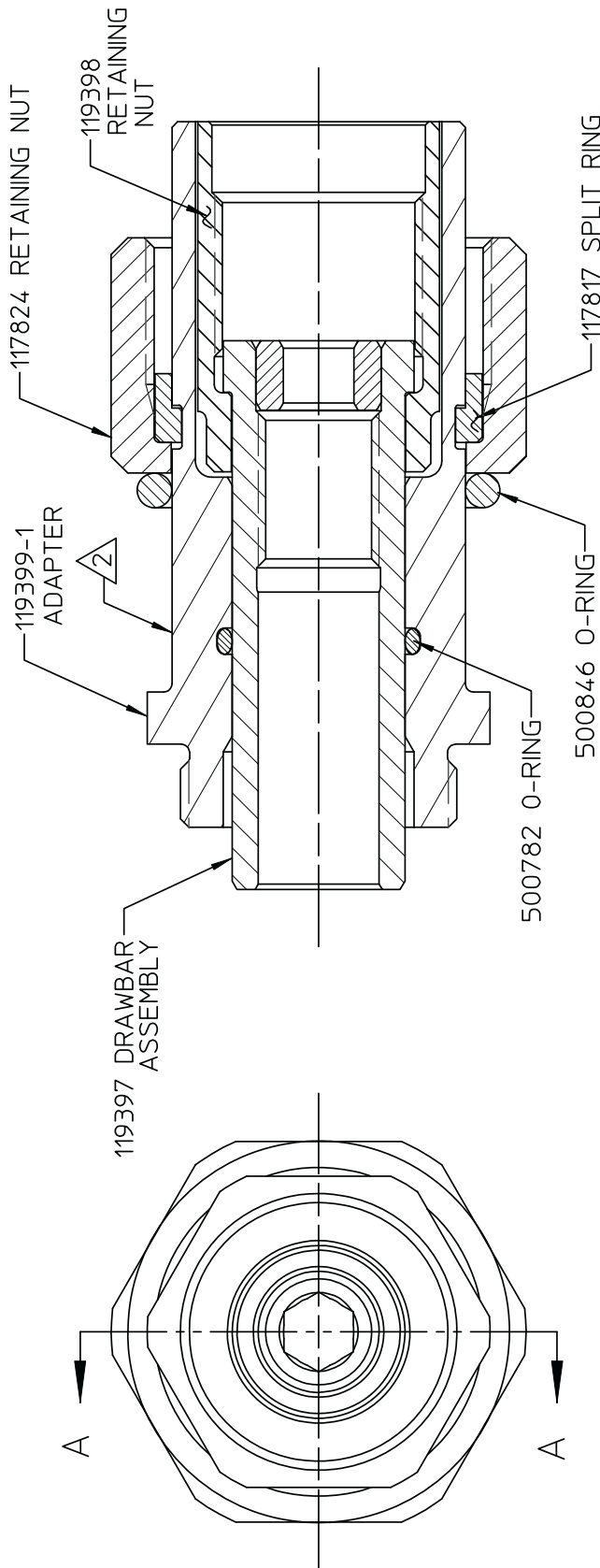


Figure 1

113272
Sheet 2 of 2



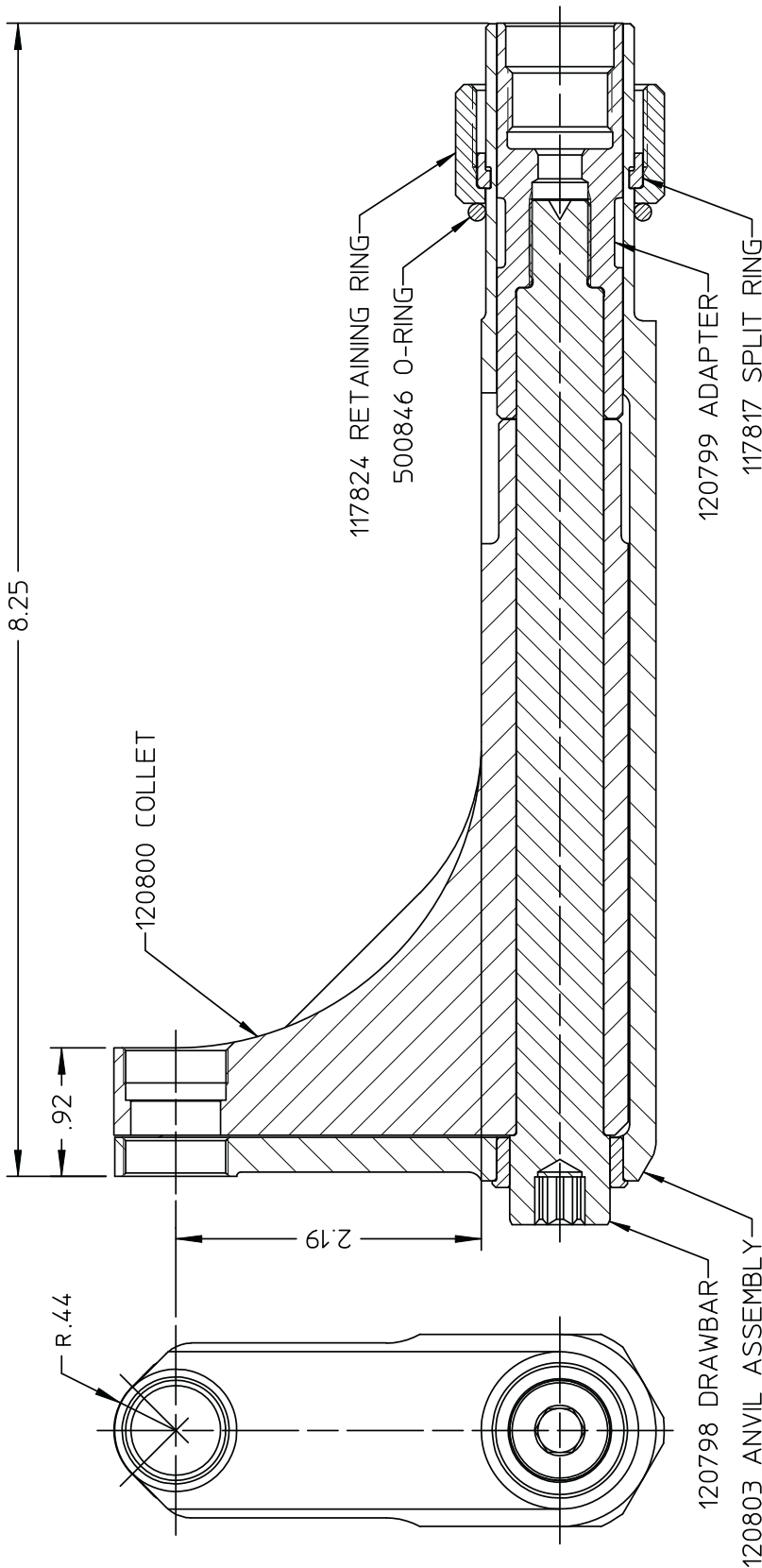




NOTES:

- 1 SHIP WITH P/N 505824. TEE-WRENCH.
- 2 ETCH U.S. PATENT 4896522 ON THIS SURFACE.
- 3 SHIP WITH STROKE LIMITER P/N 118362 FOR USE WITH 245 TOOL.
- 4 FOR USE WITH TOOLS OTHER THAN 245 CONSULT HUCK KINGSTON ENGINEERING DEPARTMENT.

Part Number		119400-1
TYPE:	ROTATABLE ADAPTER	
FASTENER:	N/A	
TOOL(S):	FOR 99-3700 SERIES	
Notes:		Product Revision: A
US Patent:		Date: 07/24/03

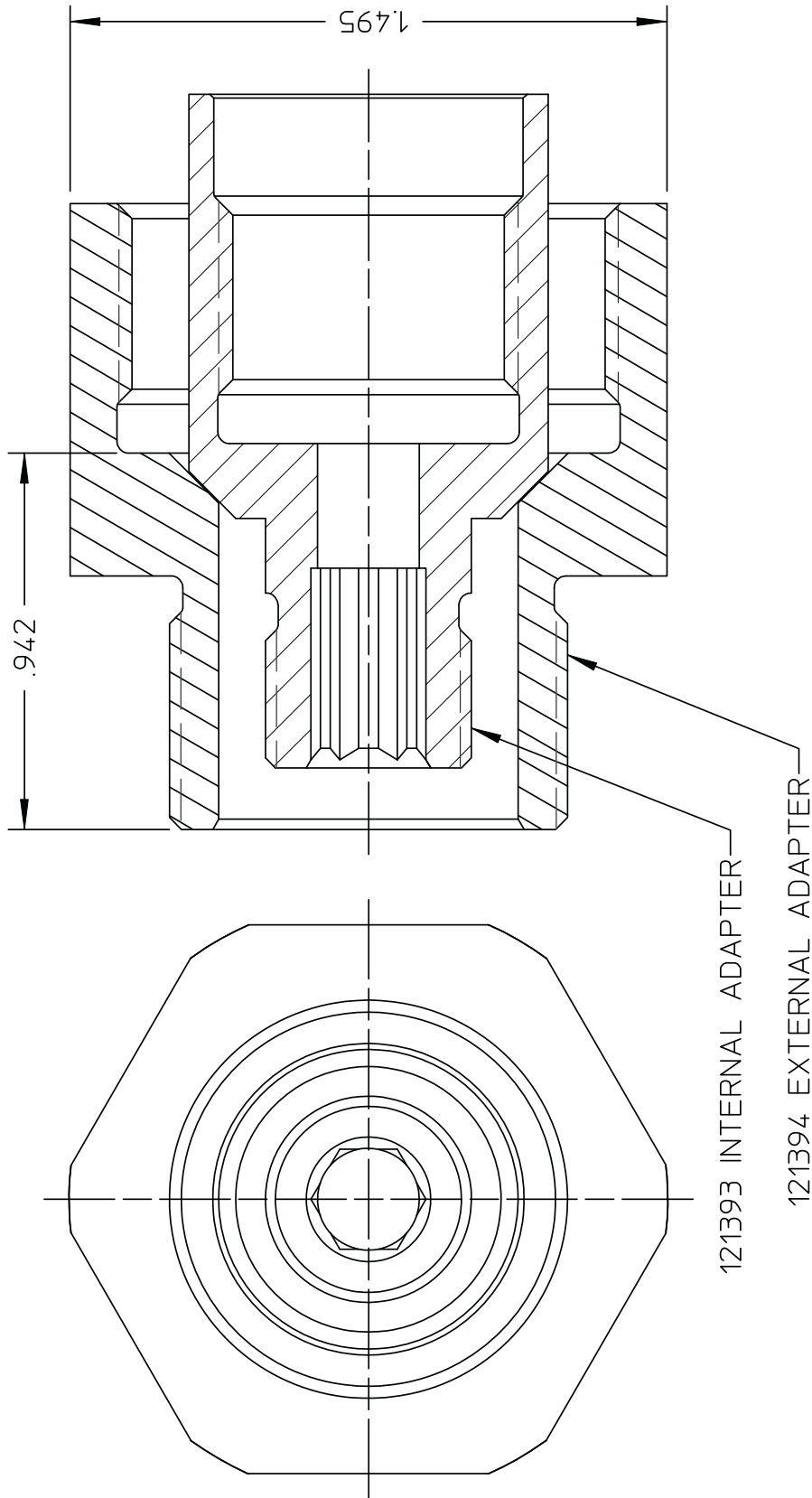


NOTES:

- 1 THIS ATTACHMENT TO BE USED WITH ALL 99-1500 SERIES NOSE ASSEMBLIES.
- 2 THIS ATTACHMENT TO BE USED WITH 225/245 TOOL AND STROKE LIMITER KIT P/N 118362.
- 3 THIS ATTACHMENT TO BE USED WITH 2500 TOOL AND STROKE LIMITER KIT P/N 119888.
- 4 FOR OTHER TOOLS AND/OR OTHER TOOL AND STROKE COMBINATIONS, CONSULT ENGINEERING DEPARTMENT.

NOSE TYPE: ROTATABLE OFFSET	
FASTENER TYPE:	99-1500 SERIES NOSE ASSEMS.
TOOL(S):	SEE NOTE
Notes:	Product Revision: B
US Patent:	Date: 06/24/03

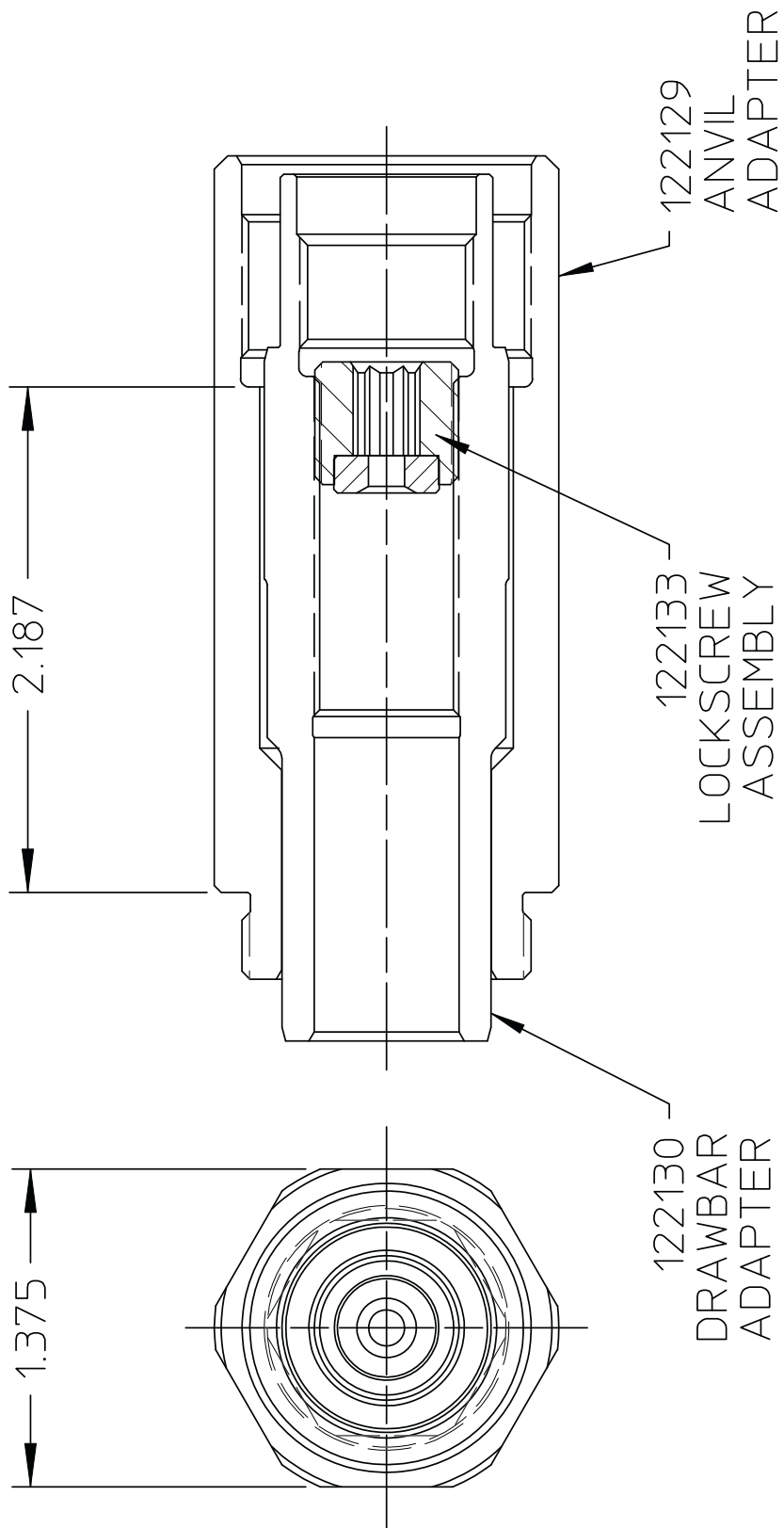
Part Number
120804



NOTES:

- 1 TO ADAPT 99-3433 TO 245 STYLE TOOLS.
- 2 FOR REFERENCE ONLY:
TO ADAPT STANDARD 352 NOSE, USE WITH
103090 RETAINING NUT AND
110452 STOP

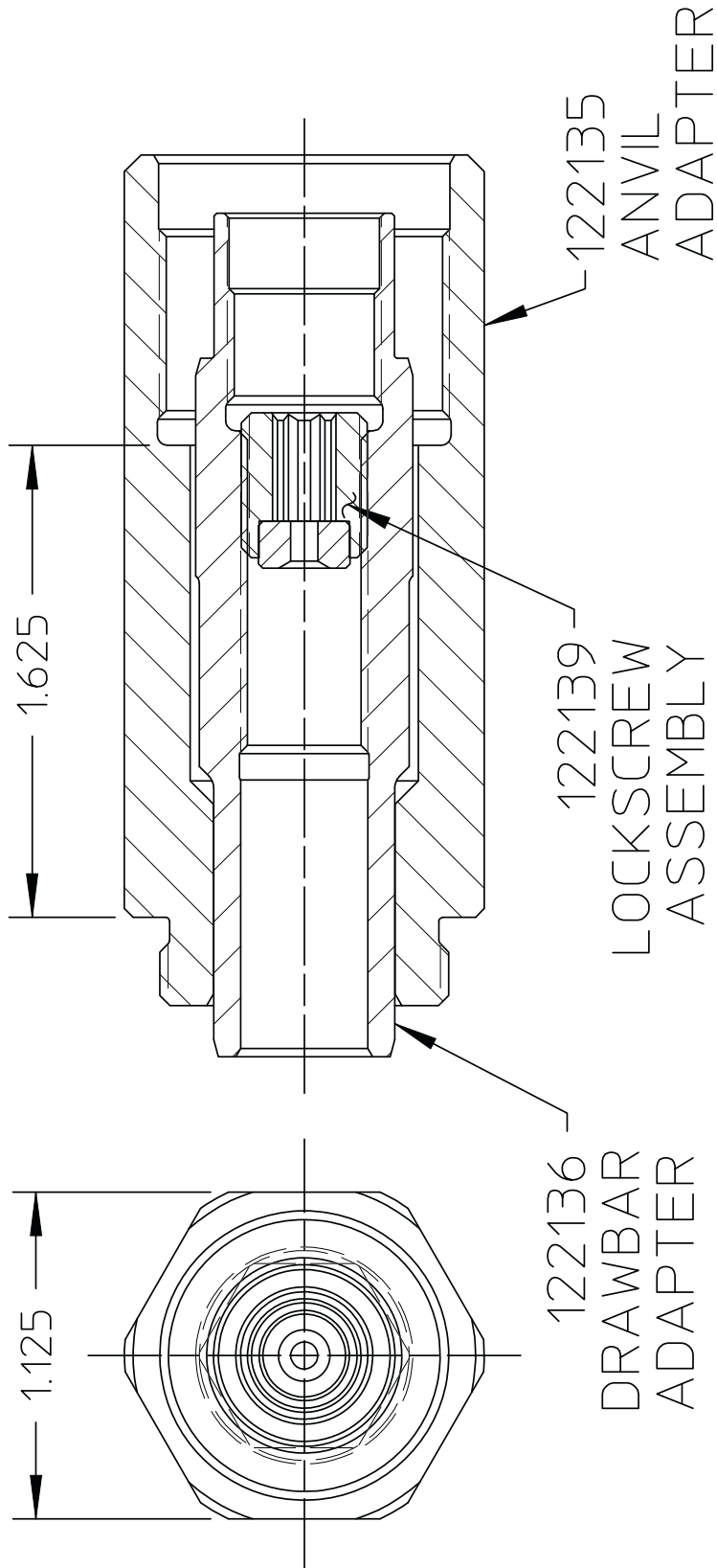
Part Number	
121395	
TYPE:	ADAPTER ASSEMBLY
FASTENER:	N/A
TOOL(S):	ADAPTS 230 TO 245
Notes:	
	Product Revision: B
US Patent:	Date: 07/24/03



NOTES:

1 SHIP WITH TEE-WRENCH P/N 505824.

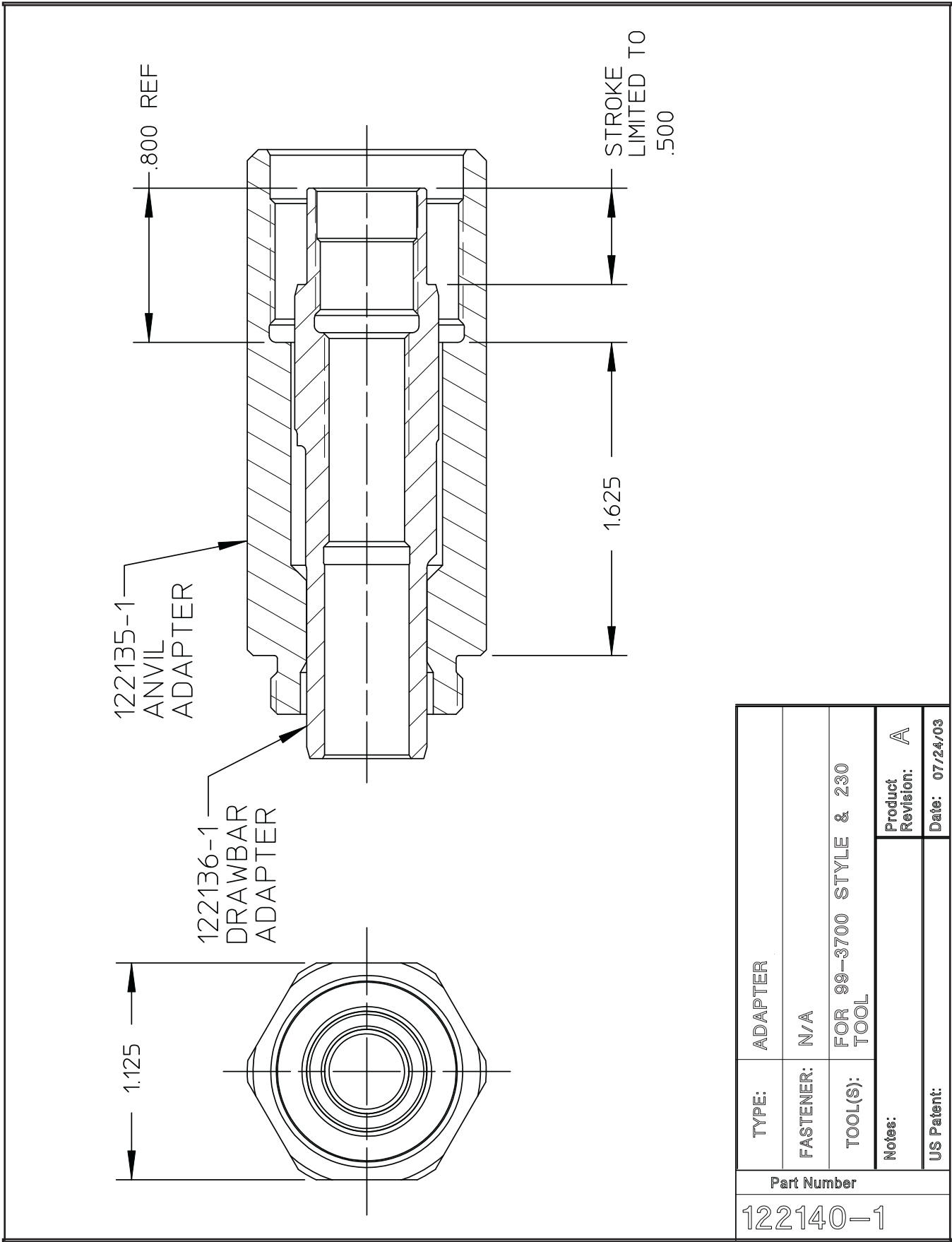
Part Number		NOSE TYPE: ROTATABLE ADAPTER
122134		FASTENER TYPE: 99-1700/208-625 SERIES
		TOOL(S): 225, 245
Notes:		Product Revision: A
US Patent:		Date: 06/20/03



NOTES:

1 SHIP WITH TEE-WRENCH P/N 506116.

Part Number	
122140	
TYPE:	ROTATABLE ADAPTER
FASTENER:	N/A
TOOL(S):	99-1700/208-625 SERIES
Notes:	
Product Revision:	A
US Patent:	Date: 07/24/03





REV	DESCRIPTION	DATE
A	RELEASE	12/18/01

1.125

1.575

122136
DRAWBAR
ADAPTER

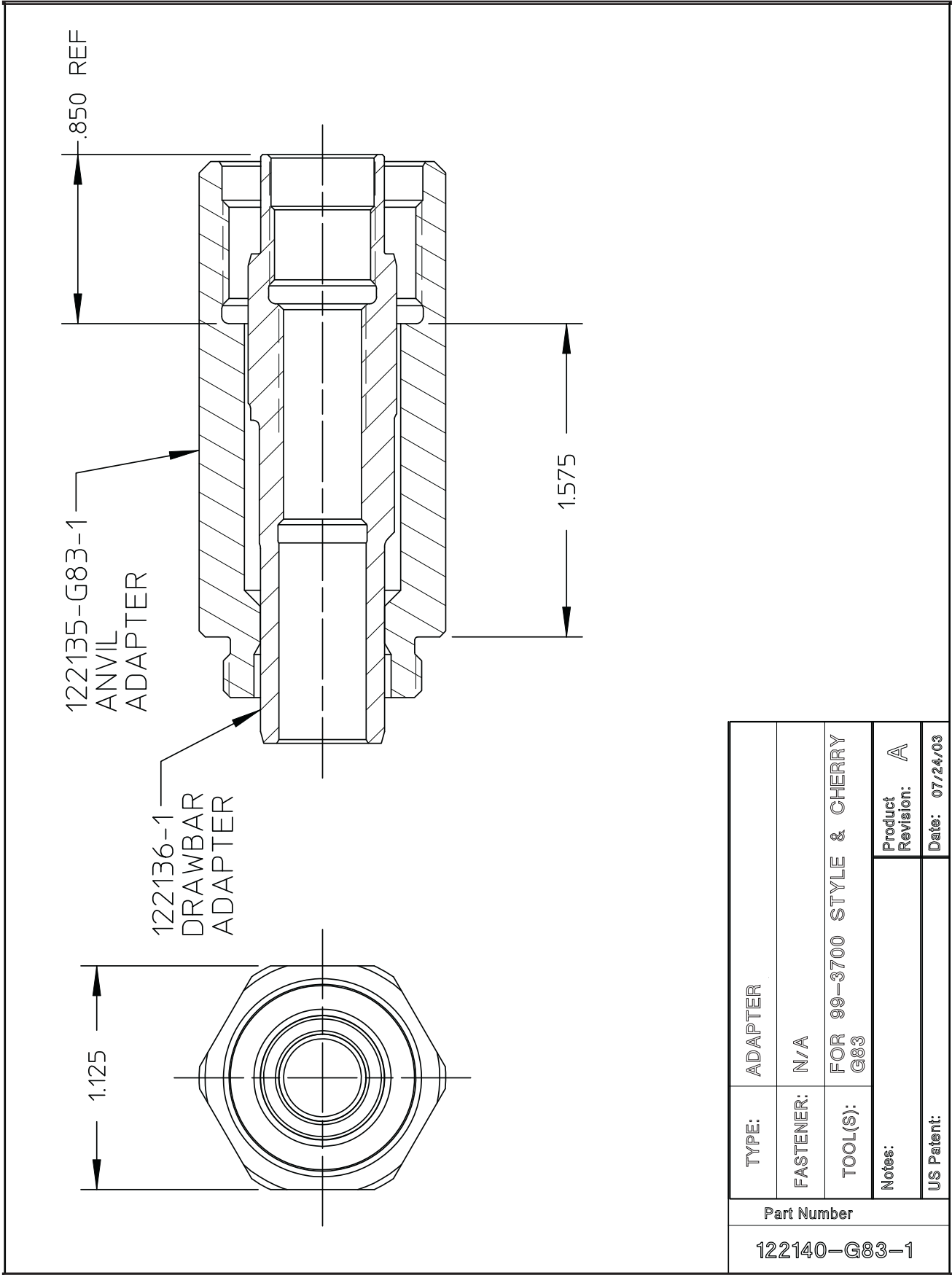
122139
LOCKSCREW
ASSEMBLY

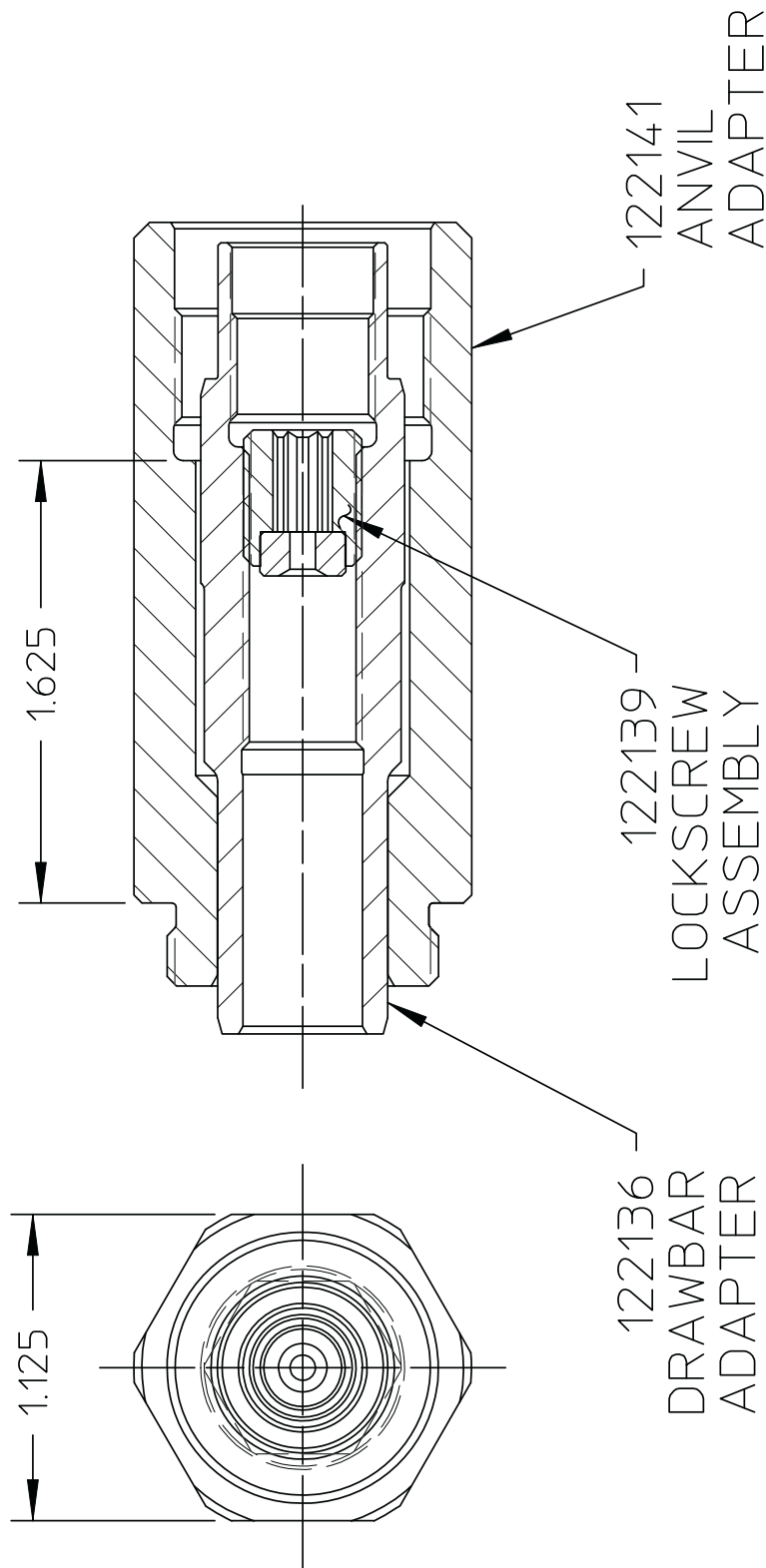
122135-G83
ANVIL
ADAPTER

NOTES:

1 SHIP WITH TEE-WRENCH P/N 506116.

HUCK MANUFACTURING COMPANY I.E.D. 85 GRAND STREET, P.O. BOX 2270 KINGSTON, NEW YORK 12401		
ADAPTER 99-1700 STYLE & CHERRY G83		
DET: WV	CK: -	DATE: 12/18/01
FOC. FAC.	A	122140-G83

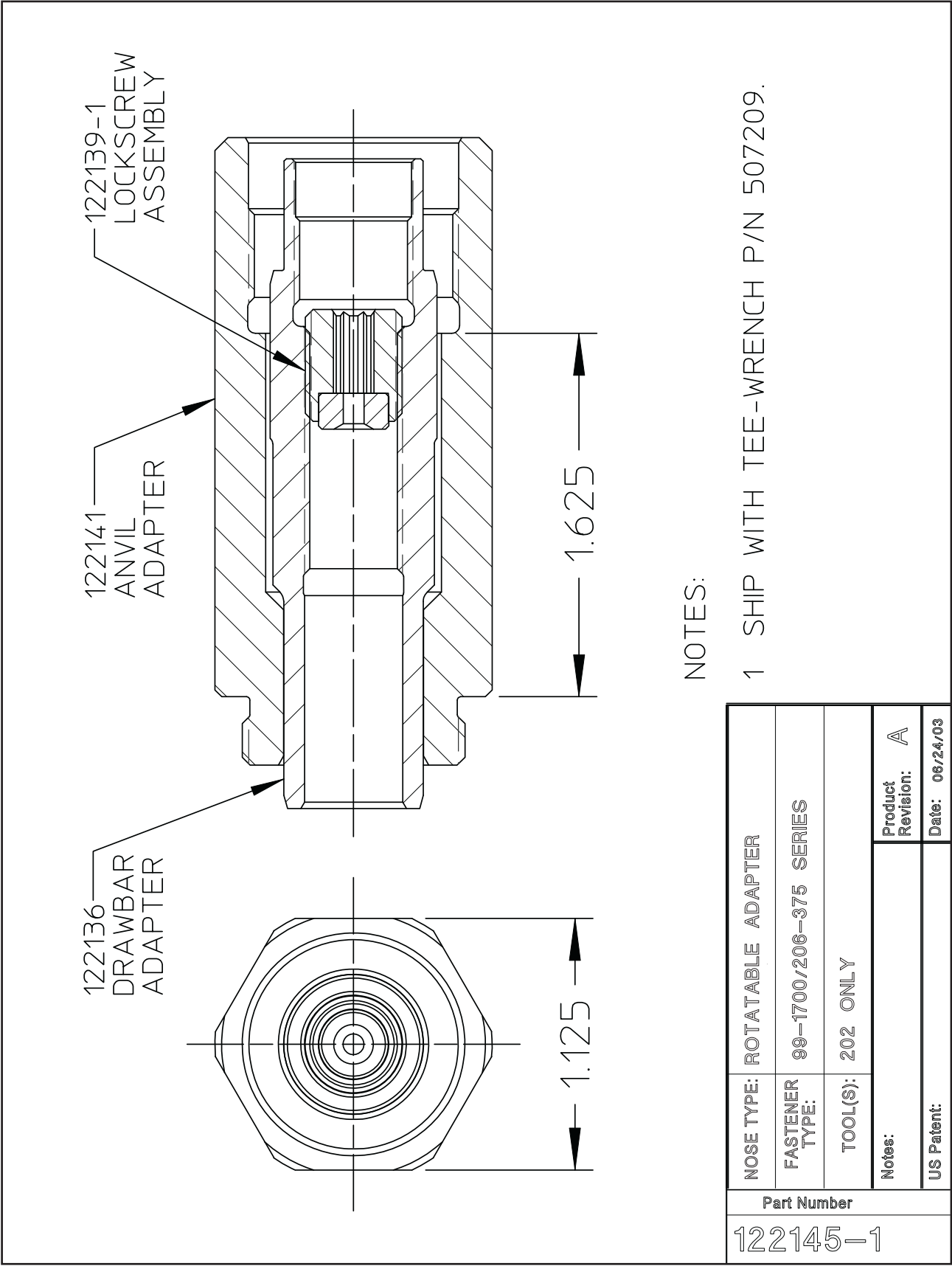


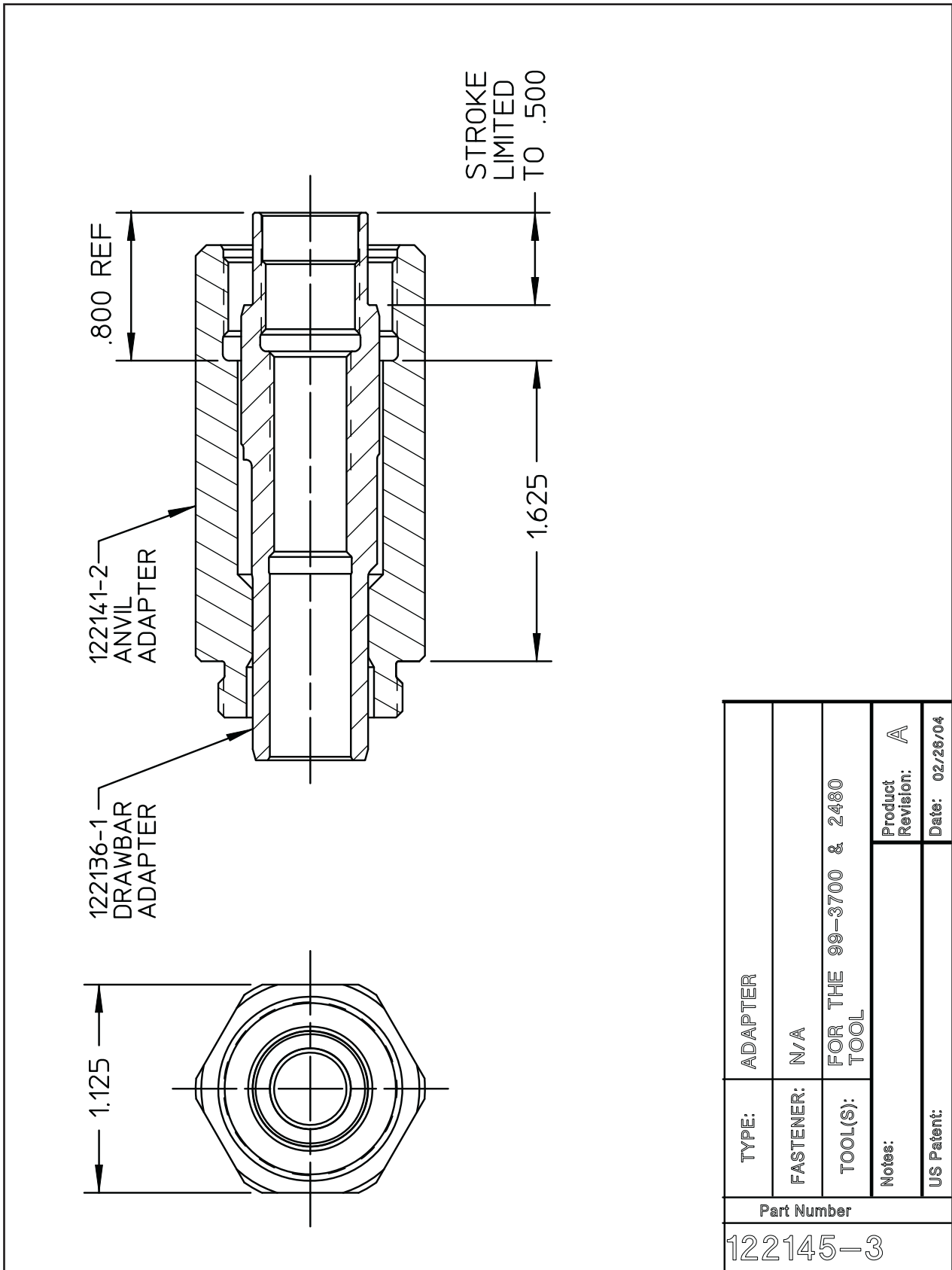


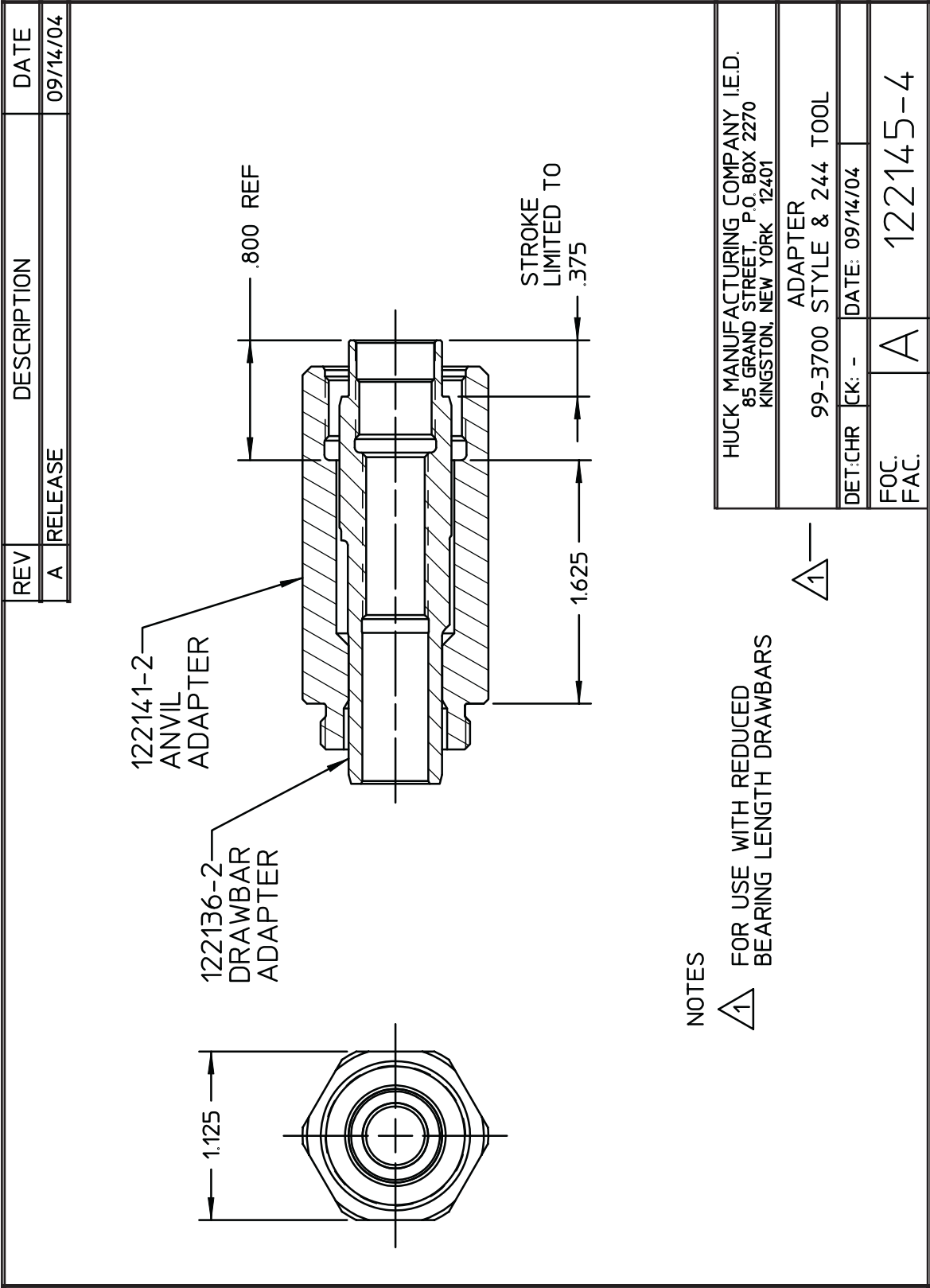
NOTES:

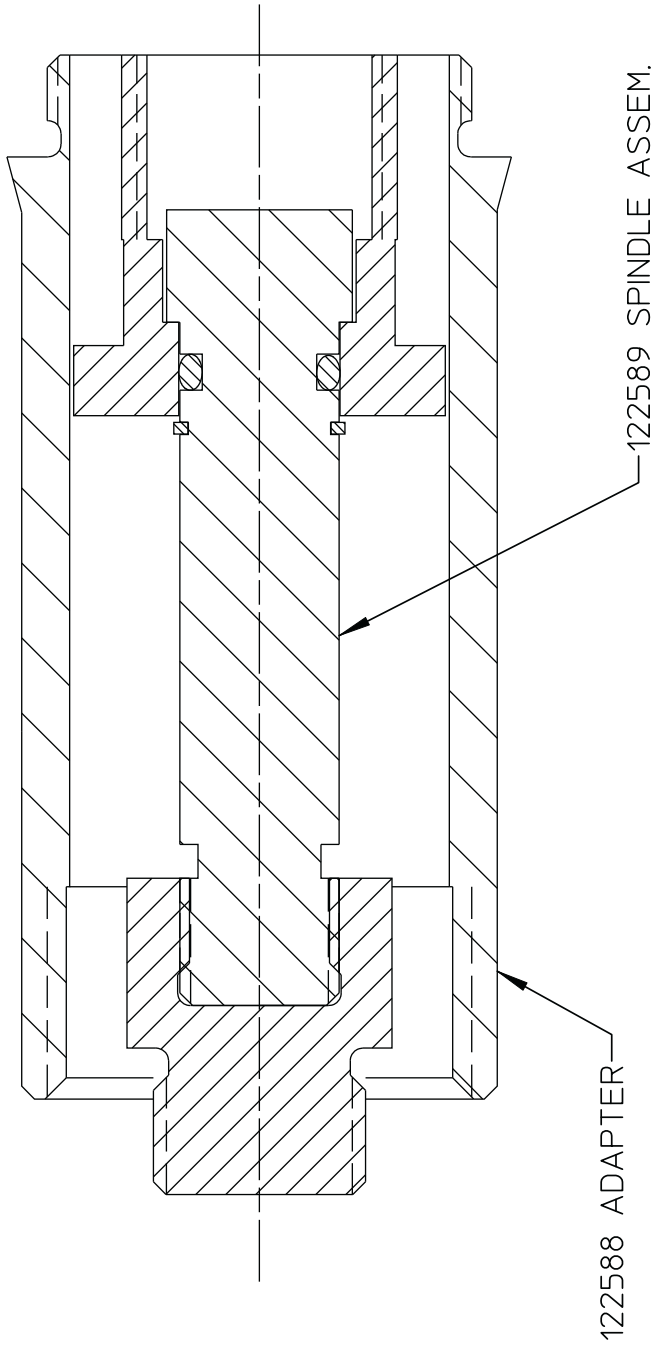
1 SHIP WITH TEE-WRENCH P/N 506116.

Part Number			
122145			
TYPE:	ROTATABLE ADAPTER-OFFSET		
FASTENER:	99-1700/206-375 SERIES		
TOOL(S):	2400 ONLY		
Notes:		Product Revision:	A
US Patent:		Date:	07/18/03





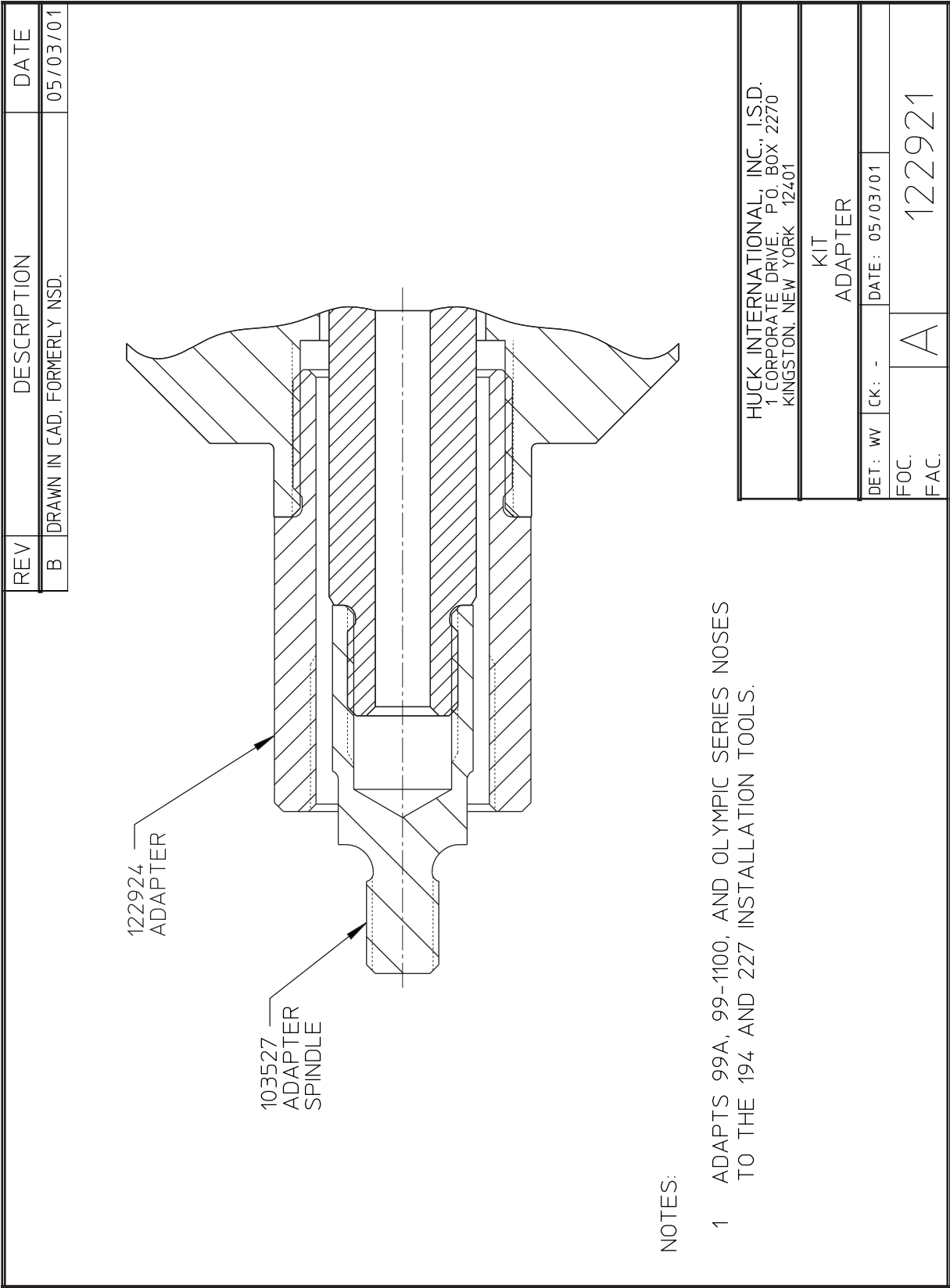




NOTES:

- 1 ADAPTS 99-S456 TO AN HK150

Part Number	
122587	
TYPE:	NON-SELF-RELEASING
FASTENER:	N/A
TOOL(S):	ADAPTS 99-S456 TO HK150
Notes:	Product Revision: C
US Patent:	Date: 07/24/03





REV	DESCRIPTION	DATE
A	RELEASE	11-11-92
B	CORRECTED CALLOUTS, NUMBERS WERE REVERSED	11-24-98

123063 SPINDLE ADAPTER

123064 ANVIL ADAPTER

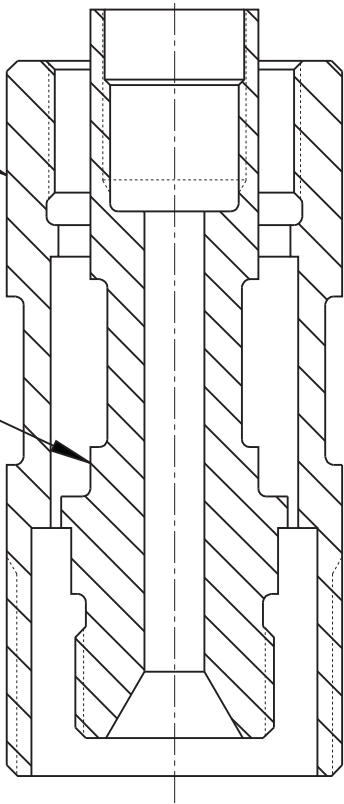
HUCK INTERNATIONAL, INC., I.S.D. 1 CORPORATE DRIVE, P.O. BOX 2270 KINGSTON, NEW YORK 12401			
ADAPTER ASSEMBLY 353 TO 230			
DET: T.L.	CK:	DATE: 11-11-92	SCALE:
FOC.		A	123065
FAC.			



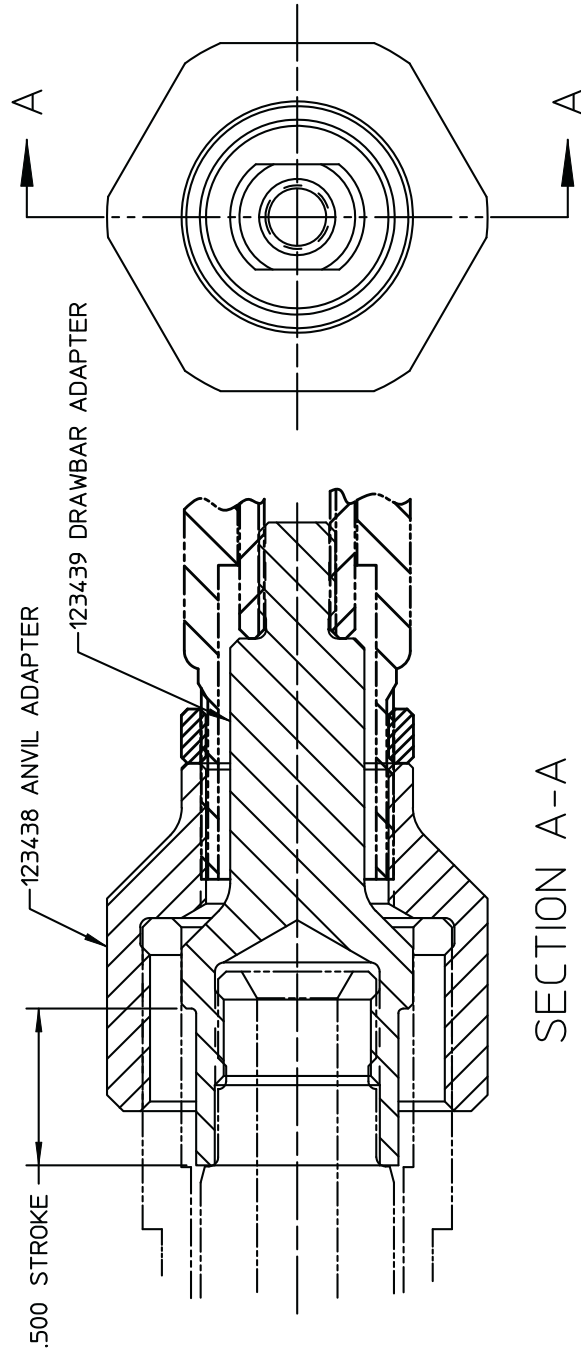
REV	DESCRIPTION	DATE
A	RELEASE	10-27-00

123063 SPINDLE ADAPTOR

123064-1 ANVIL ADAPTOR



HUCK INTERNATIONAL, INC., I.S.D. 1 CORPORATE DRIVE, P.O. BOX 2270 KINGSTON, NEW YORK 12401		
ADAPTER ASSEMBLY 353 TO 244		
DET: MP	CK:	DATE: 10-26-00
FOC.	A	123065-1
FAC.		

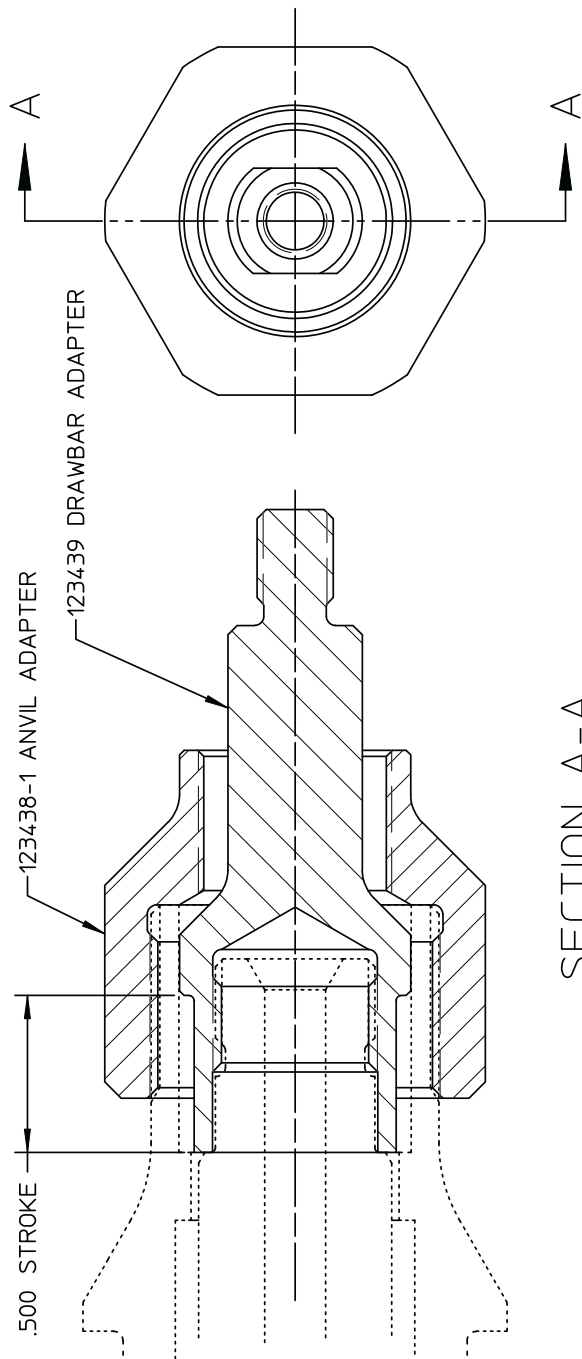


SECTION A-A

NOTES:

- 1 USE TO ADAPT 99-1099, -1098, -1097, -1100, -1101 AND -1102 TO 230 TOOL.

Part Number		ADAPTER ASSEMBLY	
123437		TYPE:	ADAPTER ASSEMBLY
		FASTENER:	N/A
		TOOL(S):	N/A
		Notes:	Product Revision: C
		US Patent:	Date: 07/24/03



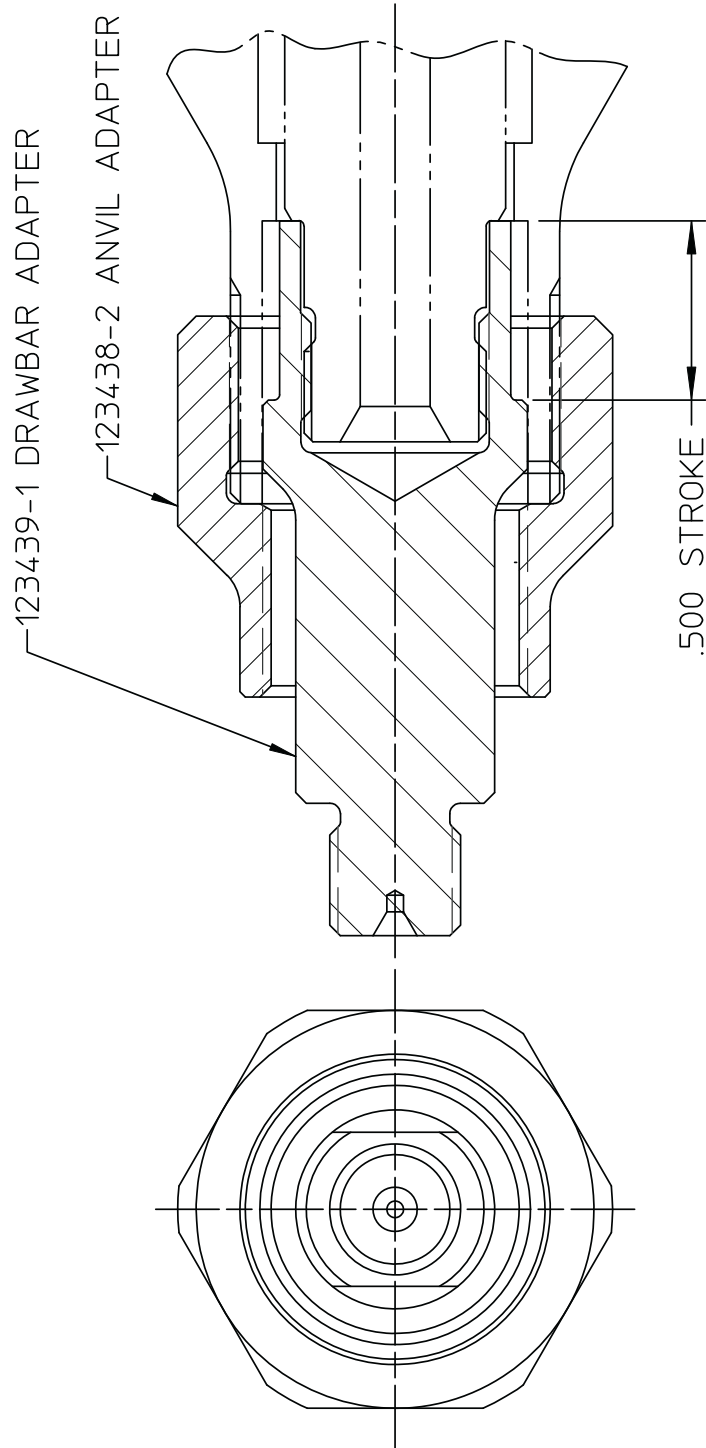
SECTION A-A

NOTES:

- 1 USE TO ADAPT 99-1097, -1098, -1099, -1100, -1101 AND -1102 TO 202 TOOL.

ADAPTER ASSEMBLY			
TYPE:	N/A		
FASTENER:	N/A		
TOOL(S):	N/A		
Notes:	Product Revision: C		
US Patent:	Date: 07/24/03		

Part Number
123437-1



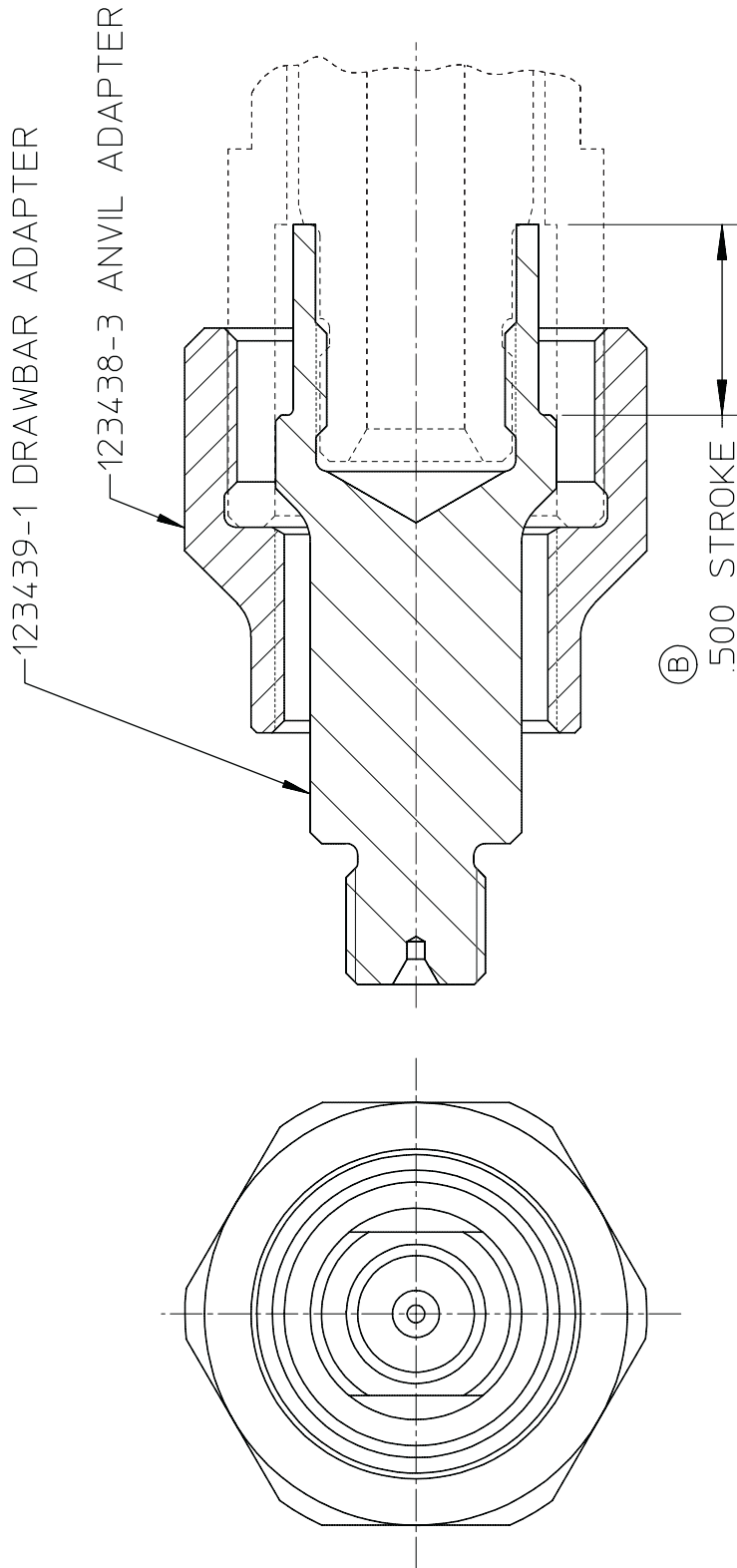
NOTES:

⚠ USE TO ADAPT 99-1333, 99-1335 AND 99-1336 TO 202 TOOL.

Part Number		ADAPTER ASSEMBLY	
123437-2		TYPE:	ADAPTER ASSEMBLY
		FASTENER:	N/A
		TOOL(S):	N/A
		Notes:	Product Revision: B
		US Patent:	Date: 07/24/03



REV	DESCRIPTION	DATE
A	RELEASE	08/03/95
B	.500 STROKE WAS .437	07/17/02



NOTES:

 USE TO ADAPT 99-1333, 99-1335 AND 99-1336 TO 230 TOOL.

HUCK INTERNATIONAL, INC., I.S.D.
85 GRAND STREET, P.O. BOX 2270
KINGSTON, NEW YORK 12401

ADAPTER ASSEMBLY

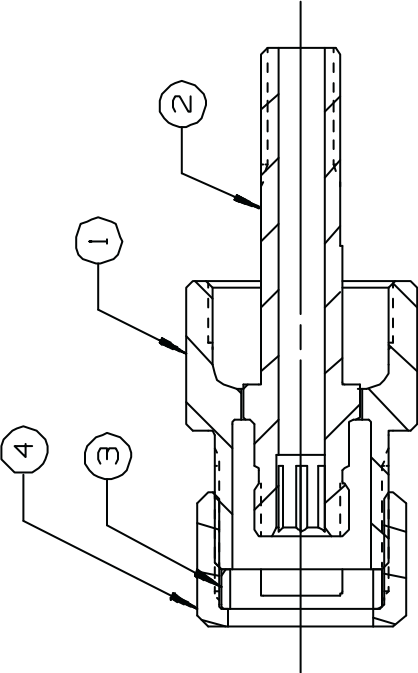
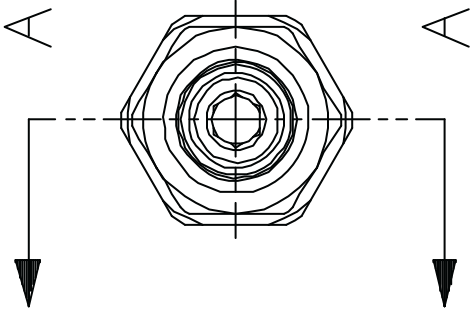
DET: T.L.	CK:	DATE: 08-03-95
FOC.	A	123437-3
FAC.		



REV	DESCRIPTION	DATE
D	MODELED IN UG	05/21/04

NOTES:

1 TO BE USED WITH 206-375 OR 206-625 AND 3/16 PASS THRU 352 STYLE NOSES.



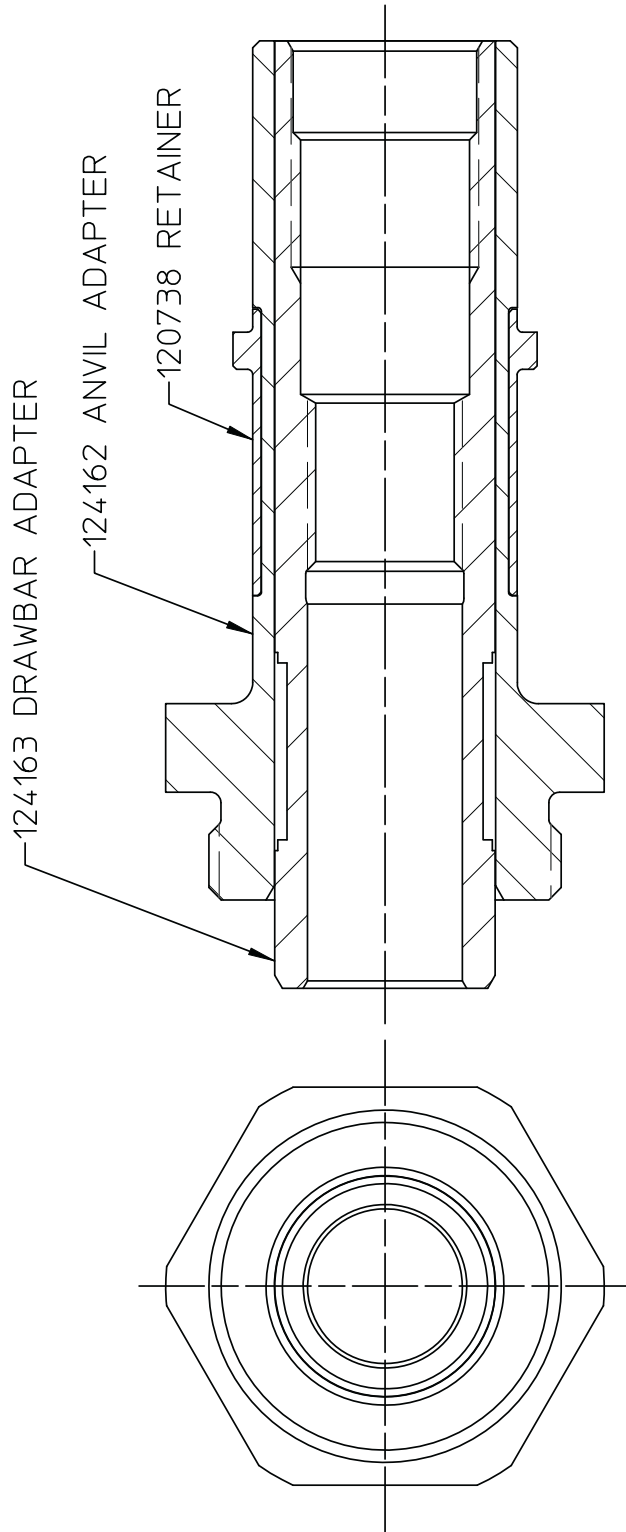
SECTION A - A

PART NO	QTY	DESCRIPTION	ITEM
111795	1	RETAINING NUT	4
120588	1	ROTATABLE STOP	3
126679	1	COLLET ADAPTER	2
124111	1	ANVIL ADAPTER	1

HUCK INTERNATIONAL, INC., S.D. 1 CORPORATE DR., P.O. BOX 2270 KINGSTON, NEW YORK 12401	
ADAPTER ASSEMBLY	
DET: WV	DATE: 04/11/94
FOC: A	124113
FAC:	

By accepting this proprietary Huck drawing, recipient agrees not to reproduce or disclose any part thereof to any other without the written permission of Huck International, Inc.

FORM KE104 Rev C



NOTES:

- 1 FOR USE WITH 244 TOOL SHIP WITH RETAINING NUT 125412.

Part Number		ADAPTER ASSEMBLY	
124164		TYPE:	
		FASTENER:	N/A
		TOOL(S):	99-1700 SERIES TO 352
		Notes:	Product Revision: B
		US Patent:	Date: 07/24/03

124164



REV	DESCRIPTION	DATE
A	RELEASE	01-26-96

117824 RETAINING NUT

110670 STOP

124975 COLLET
ADAPTER ASSEMBLY

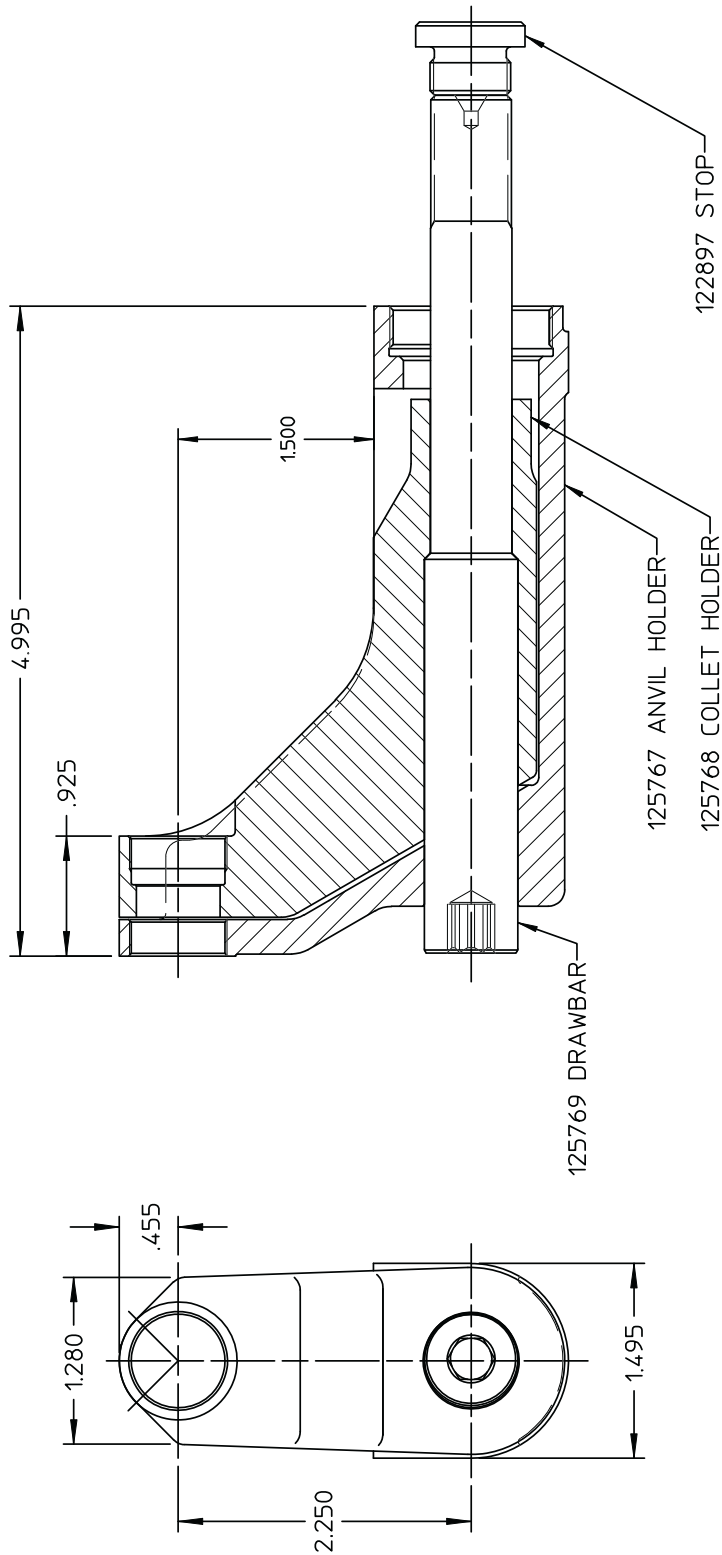
124976 ANVIL ADAPTER

HUCK INTERNATIONAL, INC., I.S.D.
85 GRAND STREET, P.O. BOX 2270
KINGSTON, NEW YORK 12401

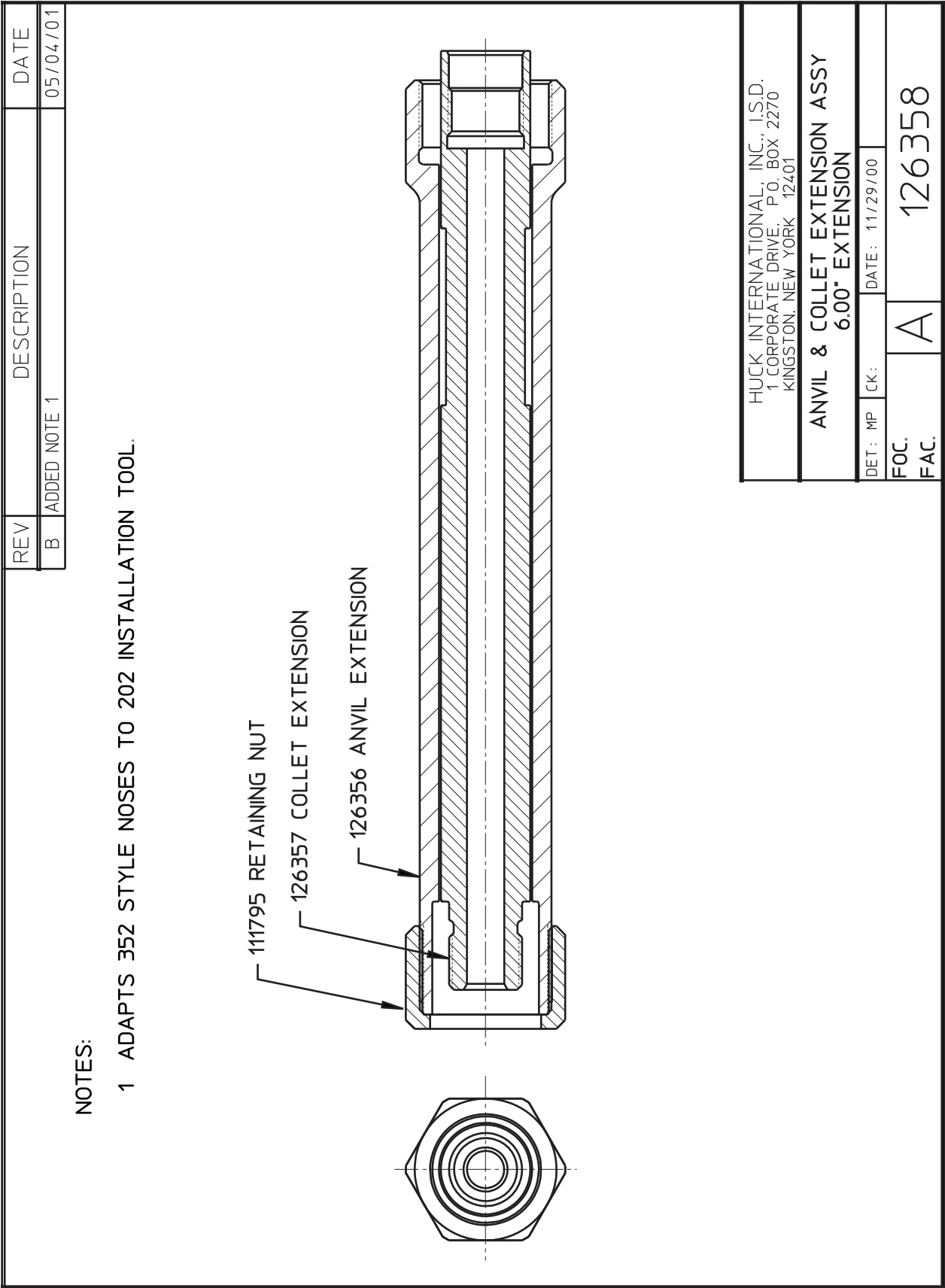
ADAPTER ASSEMBLY
353 TO 5901

DET: T. L. CK: DATE: 01-26-96

FOC. A 124977
FAC.

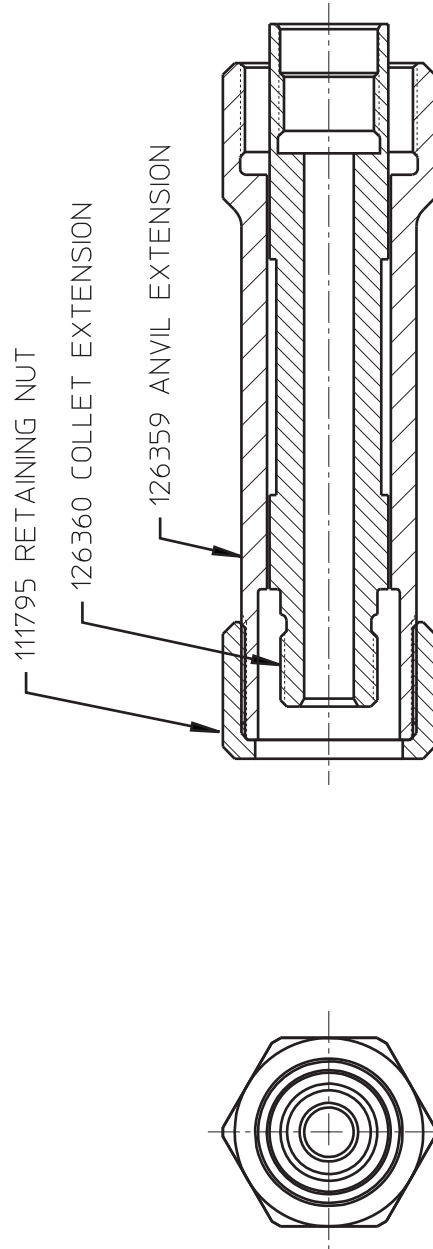


Part Number		TYPE: OFFSET ATTACHMENT	
125770		FASTENER:	N/A
		TOOL(S):	208-625
Notes:		Product Revision:	C
US Patent:		Date:	07/23/03





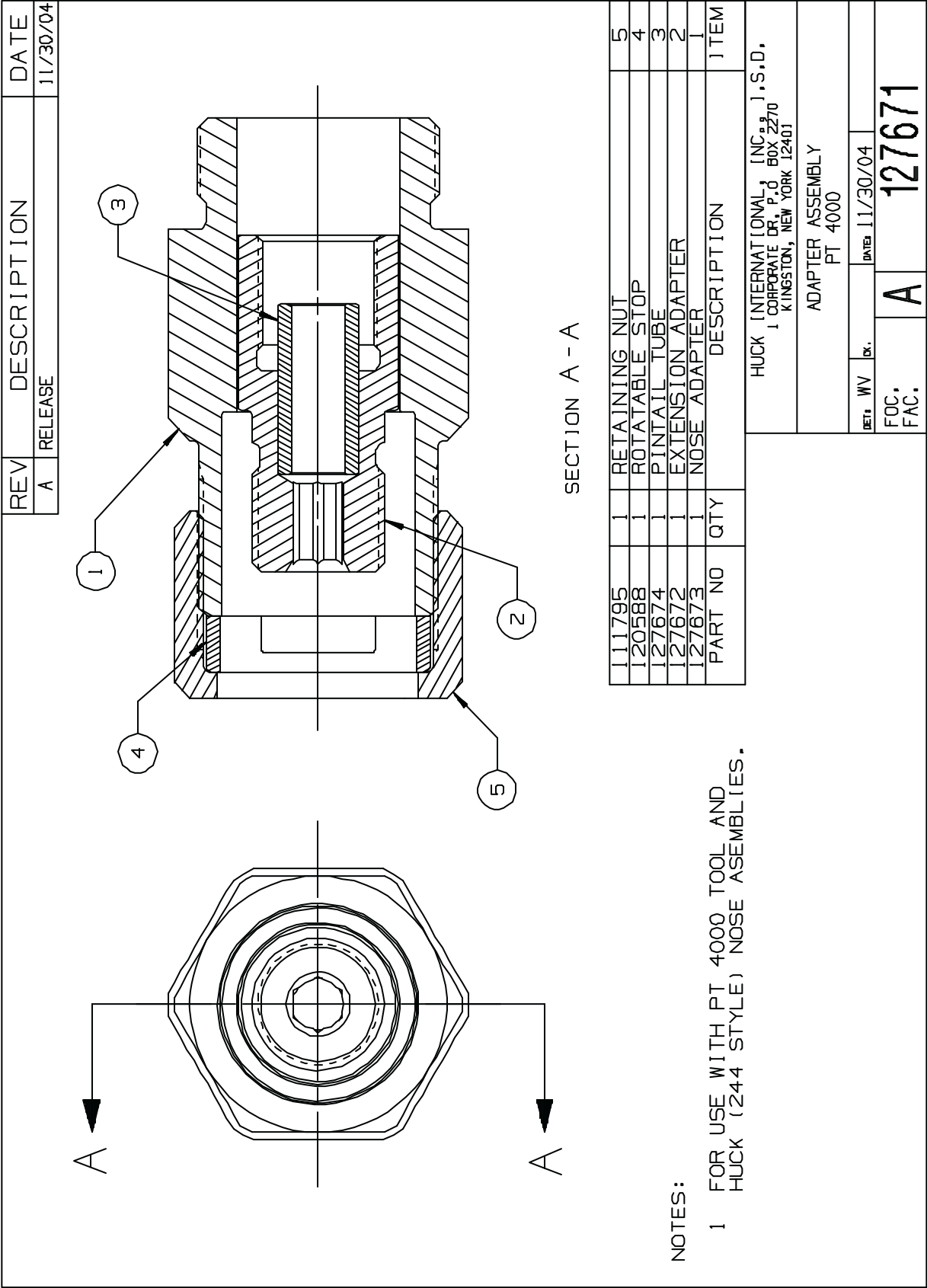
REV	DESCRIPTION	DATE
B	ADDED NOTE 1	05/04/01



Ⓑ NOTES:

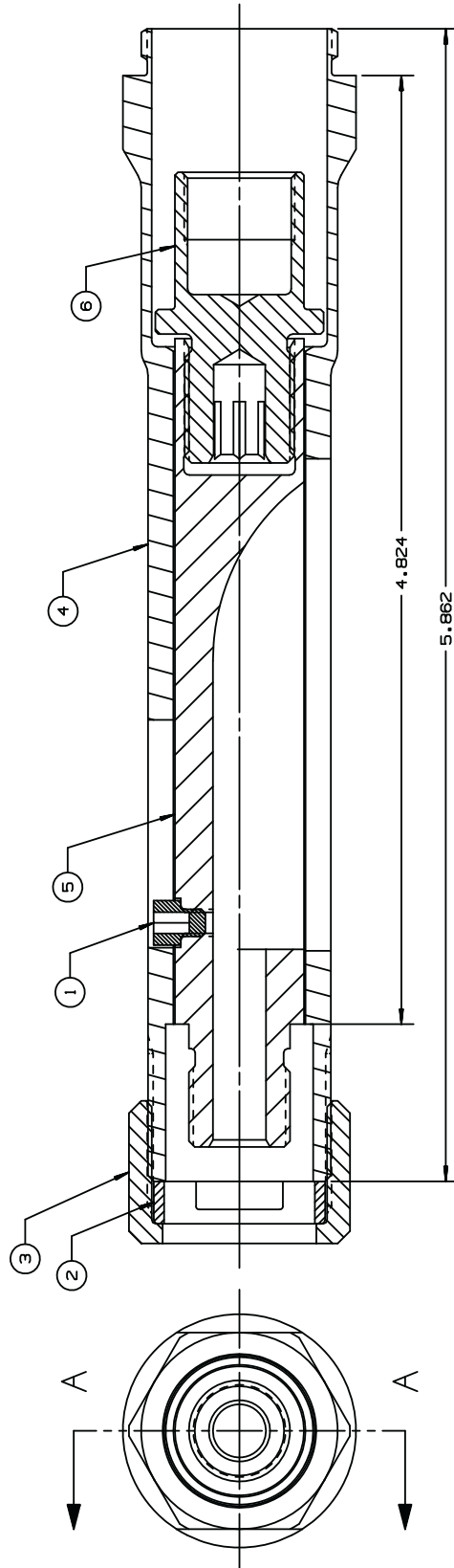
- 1 ADAPTS 352 STYLE NOSES TO 202 TOOL

HUCK INTERNATIONAL, INC., I.S.D. 1 CORPORATE DRIVE, P.O. BOX 2270 KINGSTON, NEW YORK 12401		
ANVIL & COLLET EXTENSION ASSY 3.00" EXTENSION		
DET: MP	CK:	DATE: 11/29/00
FOC:	A	126361
FAC:		





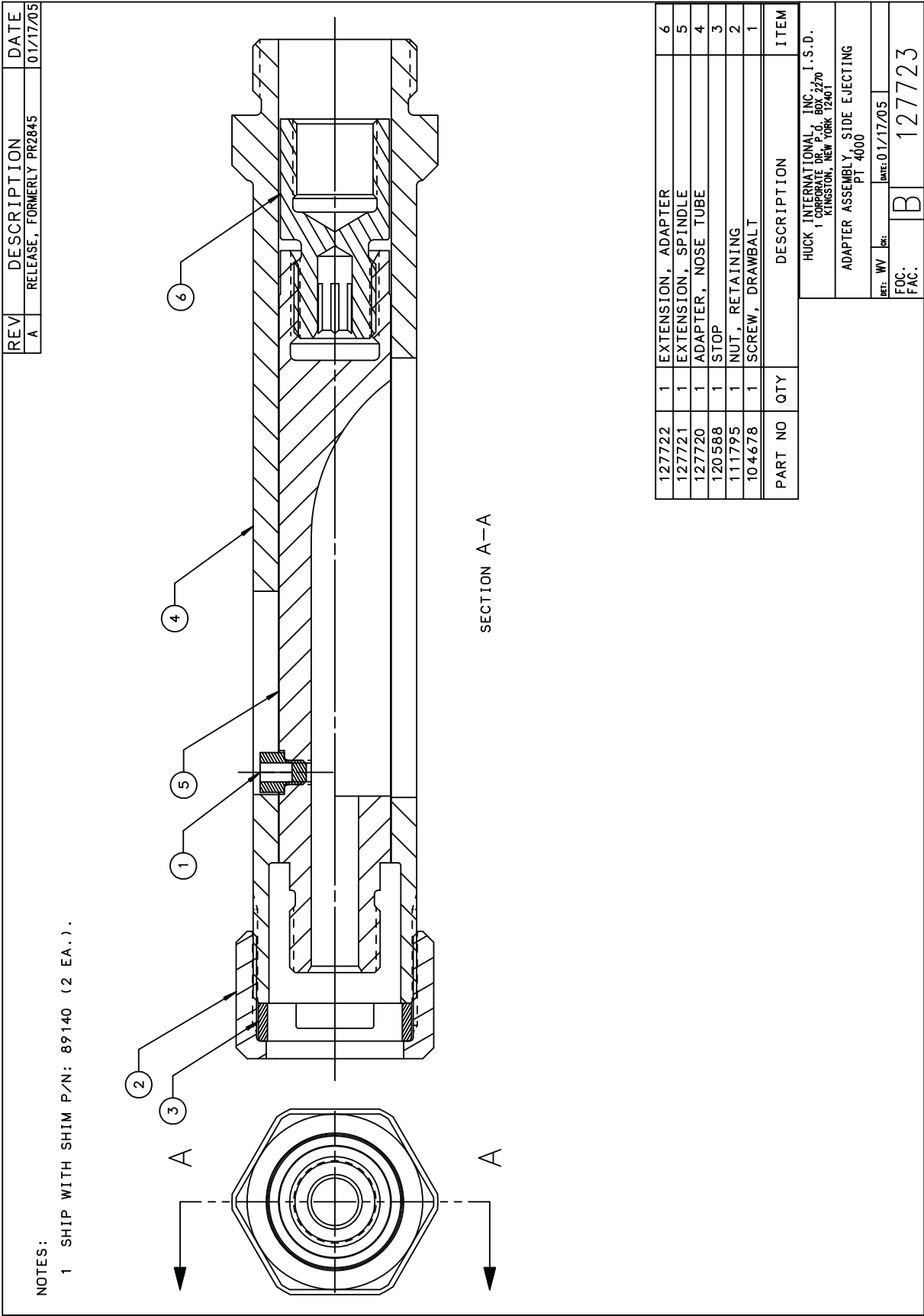
REV	DESCRIPTION	DATE
A	RELEASE, FORMERLY PR2748	01/14/05



SECTION A - A

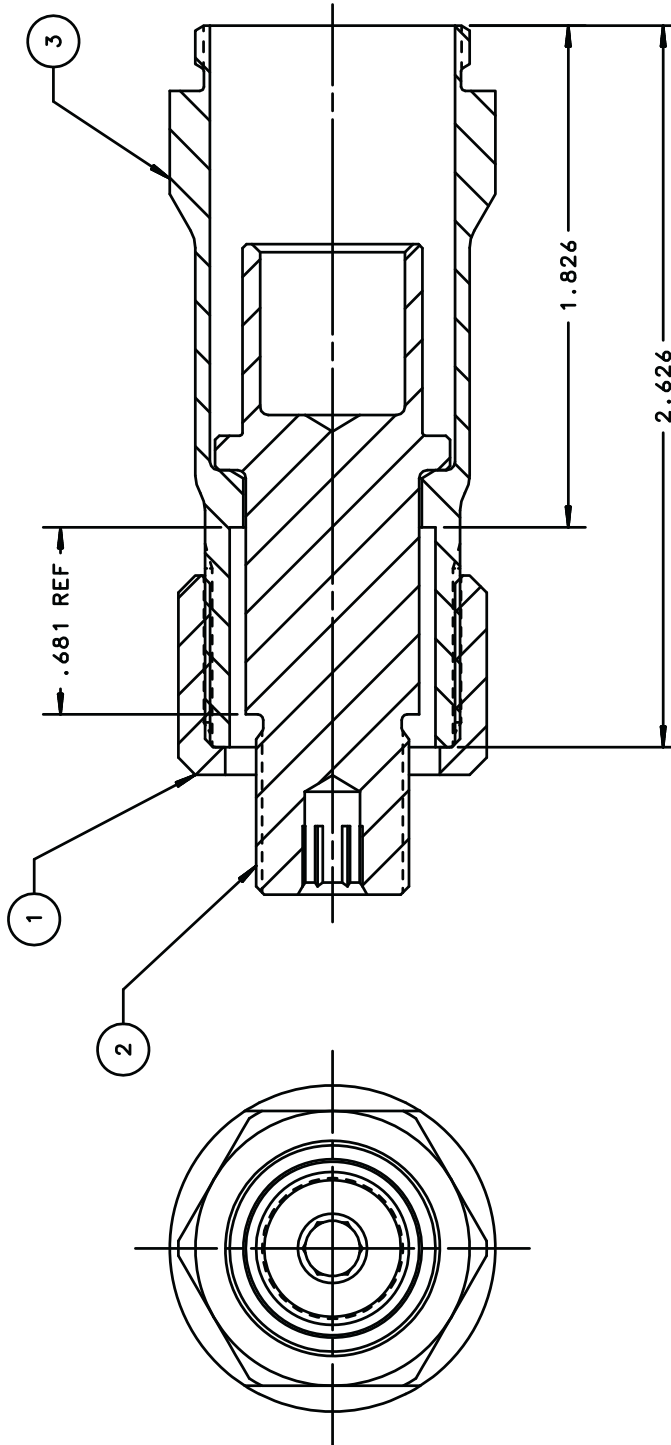
PART NO	QTY	DESCRIPTION	ITEM
127714	1	ADAPTER, COLLET	6
127713	1	EXTENSION SPINDLE	5
127712	1	ADAPTER, NOSE TUBE	4
120588	1	STOP	3
111795	1	RETAINING NUT	2
104678	1	SCREW, DRAWBOLT	1

HUCK INTERNATIONAL, INC., I.S.D. 1 CORPORATE DR., P.O. BOX 2270 KINGSTON, NEW YORK 12401	
ADAPTER ASSEMBLY, SIDE EJECTING HK-150 / 2480	
REV: WV	REV: 01/14/05
FOC: B	127715

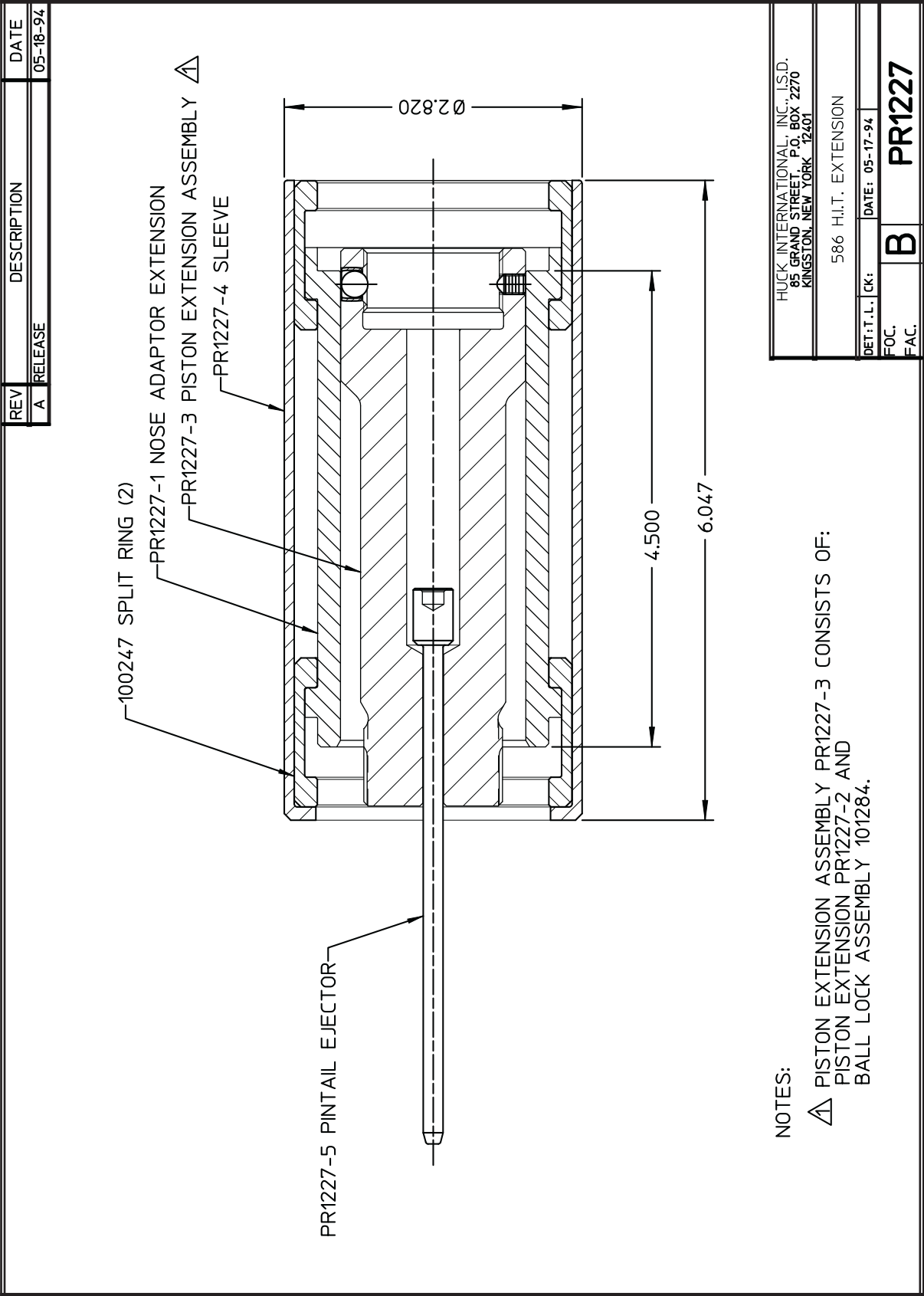




REV	DESCRIPTION	DATE
A	RELEASE	6/20/05



127858	1	COLLET ADAPTER	3
127853	1	ADAPTER	2
111795	1	RETAINING NUT	1
PART	QTY	DESCRIPTION	ITEM
HUCK INTERNATIONAL, INC., I.S.D. 1 CORPORATE DR., P.O. BOX 2270 KINGSTON, NEW YORK 12401			
ADAPTER ASSEMBLY HK - 150			
DET. MVM	REV.	DATE	6/20/05
FOC:	B	127863	
FAC:			





Limited Warranties

Limited Lifetime Warranty on BobTail® Tools:

Huck International, Inc. warrants to the original purchaser that its BobTail® installation tools manufactured after 12/1/2016 shall be free from defects in materials and workmanship for its useful lifetime. This warranty does not cover special order / non-standard products, or part failure due to normal wear, tool abuse or misapplication, or user non-compliance with the service requirements and conditions detailed in the product literature.

Two Year Limited Warranty on Installation Tools:

Huck International, Inc. warrants that its installation tools and Powerig® hydraulic power sources manufactured after December 1, 2016 shall be free from defects in materials and workmanship for a period of two years from date of purchase by the end user. This warranty does not cover special order / non-standard products, or part failure due to normal wear, tool abuse or misapplication, or user non-compliance with the service requirements and conditions detailed in the product literature.

90 Day Limited Warranty on Nose Assemblies and Accessories:

Huck International, Inc. warrants that its nose assemblies and accessories shall be free from defects in materials and workmanship for a period of 90 days from date of purchase by the end user. This warranty does not cover special clearance noses, or special order / non-standard product, or part failure due to normal wear, abuse or misapplication, or user non-compliance with the service requirements and conditions detailed in the product literature.

Useful lifetime is defined as the period over which the product is expected to last physically, up to the point when replacement is required due to either normal in-service wear, or as part of a complete overhaul. Determination is made on a case-by case basis upon return of parts to Huck International, Inc. for evaluation.

Tooling, Part(s) and Other Items not manufactured by Huck:

HUCK makes no warranty with respect to the tooling, part(s), or other items manufactured by third parties. HUCK expressly disclaims any warranty expressed or implied, as to the condition, design, operation, merchantability, or fitness for use of any tool, part(s), or other items thereof not manufactured by HUCK. HUCK shall not be liable for any loss or damage, directly or indirectly, arising from the use of such tooling, part(s), or other items or breach of warranty or for any claim for incidental or consequential damages.

Huck shall not be liable for any loss or damage resulting from delays or non-fulfillment of orders owing to strikes, fires, accidents, transportation companies or for any reason or reasons beyond the control of the Huck or its suppliers.

Huck Installation Equipment:

Huck International, Inc. reserves the right to make changes in specifications and design and to discontinue models without notice.

Huck Installation Equipment should be serviced by trained service technicians only.

Always give the serial number of the equipment when corresponding or ordering service parts.

Complete repair facilities are maintained by Huck International, Inc. Please contact one of the offices listed below.

Eastern

One Corporate Drive Kingston, New York 12401-0250
Telephone (845) 331-7300 FAX (845) 334-7333

Outside USA and Canada

Contact your nearest Huck International location (see reverse).

In addition to the above repair facilities, there are Authorized Tool Service Centers (ATSC's) located throughout the United States. These service centers offer repair services, spare parts, Service Parts Kits, Service Tool Kits and Nose Assemblies. Please contact your Huck Representative or the nearest Huck International location (see reverse) for the ATSC in your area.



ARCONIC

Arconic Inc. (NYSE: ARNC) creates breakthrough products that shape industries. Working in close partnership with our customers, we solve complex engineering challenges to transform the way we fly, drive, build and power. Through the ingenuity of our people and cutting-edge advanced manufacturing, we deliver these products at a quality and efficiency that ensures customer success and shareholder value.

Arconic Fastening Systems Tooling Support Locations

INDUSTRIAL NORTH AMERICA

Kingston Operations
1 Corporate Drive
Kingston, NY 12401
Tel: +1-800-278-4825
Fax: +1-845-334-7333
afs.sales.kingston@arconic.com

Tracy Operations (IDG)
1925 North MacArthur Drive
Tracy, CA 95376
Tel: +1-800-826-2884
Fax: +1-800-573-2645
afs.sales.idg@arconic.com

Waco Operations
PO Box 8117
8001 Imperial Drive
Waco, TX 76714-8117
Tel: +1-800-388-4825
Fax: +1-800-798-4825
afs.sales.waco@arconic.com

INDUSTRIAL GLOBAL

Kolkata Operations
Unit No. 28, 2nd Floor,
55/1, Chowringhee Road,
Kolkata 700071, West Bengal, India
Tel: +91-33-40699170
Tel: +91-33-40699180
Fax: +91-33-40699184

Melbourne Operations
1508 Centre Road
Clayton, Victoria
Australia 3168
Tel: +613-8545-3333
Fax: +613-8545-3390
afs.sales@arconic.com

São Paulo Operations
Rodovia Anhanguera, s/n, KM 17
Parque São Domingos - Complexo
Anhanguera - Galpão 1 Seção III
(Módulo III) Box 11
CEP 05112-000 São Paulo - SP Brazil
Tel: +55-11-3583-7061

Suzhou Operations
58 Yinsheng Road,
SIP Suzhou, Jiangsu
215126 China
Tel: +86-512-62863800-8888

Telford Operations
Unit C, Stafford Park 7
Telford, Shropshire
England TF3 3BQ
Tel: +44-(0)-1952-290011
Fax: +44-(0)-1952-207701
thisales@arconic.com

Tokyo Operations (Japan and Korea)
1013 Hibiya U-1 Bldg.
Uchisaiwai-cho 1-1-7
Chiyoda-ku, Tokyo
100-0011 Japan
Tel: +81-3-3539-6594
Fax: +81-3-3539-6585

AEROSPACE NORTH AMERICA

Kingston Operations
1 Corporate Drive
Kingston, NY 12401
Tel: +1-800-278-4825
Fax: +1-845-334-7333
afs.sales.kingston@arconic.com

Simi Valley Operations
3990A Heritage Oak Court
Simi Valley, CA 93063
Tel: +1-805-527-3600
Fax: +1-805-527-0900
www.afs-simivalley.com

AEROSPACE GLOBAL

Aichach Operations
Robert-Bosch Str. 4
Aichach 86551
Germany
Tel: +49-8251-8757-0
aicaafswelcomedl@arconic.com

Cergy Operations
15 Rue du Petit Albi
F-95611 Cergy Pontoise
France
Tel: +33-1-34-33-98-00
Fax: +33-1-34-33-97-77

Hong Kong Operations
27th Floor, 88 Hing Fat Street
Causeway Bay
Hong Kong, China
Tel: +852-2864-2012



© 2019 Huck International, Inc.
Arconic Fastening Systems
Kingston Operations
1 Corporate Drive, Kingston, NY 12401
Tel: 800-431-3091 • Fax: 845-334-7333
www.afshuck.net/us



Huck provides technical assistance regarding the use and application of Huck fasteners and tooling. NOTICE: The information contained in this publication is only for general guidance with regard to properties of the products shown and/or the means for selecting such products, and is not intended to create any warranty, express, implied, or statutory; all warranties are contained only in Huck's written quotations, acknowledgments, and/or purchase orders. It is recommended that the user secure specific, up-to-date data and information regarding each application and/or use of such products.