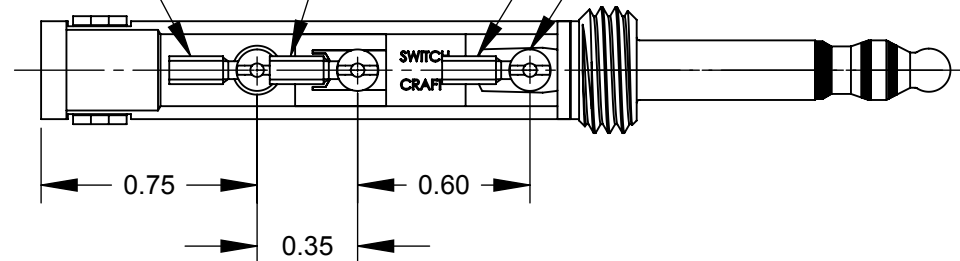


SLEEVE
TERMINAL
SEE NOTE 1

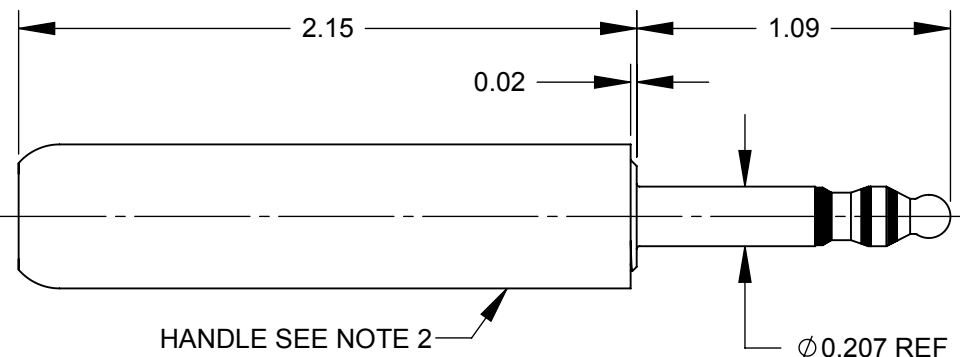
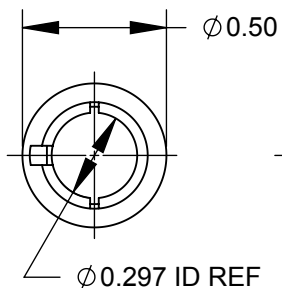
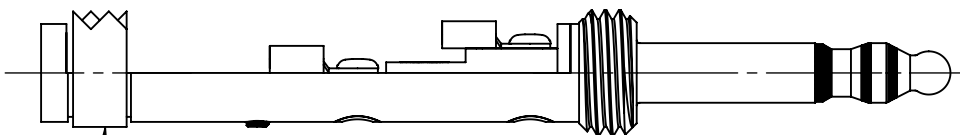
RING
TERMINAL
SEE NOTE 1

TIP
TERMINAL
SEE NOTE 1

SCREWS (3)
SEE NOTE 1



U CLAMP
SEE NOTE 1



NOTES

1. TERMINALS, SCREWS & U CLAMP ARE SHIPPED UNASSEMBLED AS K171X HARDWARE KIT.
2. HANDLE IS SHIPPED UNASSEMBLED.
3. MATERIALS:
PLUG - BRASS
U CLAMP - STEEL, TIN PLATED
TERMINALS - BRASS, TIN PLATED
SCREWS - BRASS
HANDLE & INSULATION - THERMOPLASTIC
4. THIS PRODUCT IS RoHS COMPLIANT.

CUSTOMER DRAWING

					THIS DRAWING DESCRIBES A DESIGN CONSIDERED PROPRIETARY IN NATURE, DEVELOPED AND MANUFACTURED BY SWITCHCRAFT INC. AND IS RELEASED ON A CONFIDENTIAL BASIS FOR IDENTIFICATION PURPOSES ONLY.				
					SIZE	WIDTH	MULT	LBS/M	TEMPER
					FINISH				MATERIAL
					SPEC No.				SPEC No.
					FIRST USED ON		SCALE		
							1.5:1		
					DATE DRAWN	BY	CHKD	APVD	Switchcraft®
					3-19-09	SRC	SRC	TJK	
							3-19-09	05-22-09	
					NAME				PART No.
					PLUG ASSEMBLY, RoHS				480X
									REV
									A

SolidWorks CAD File

