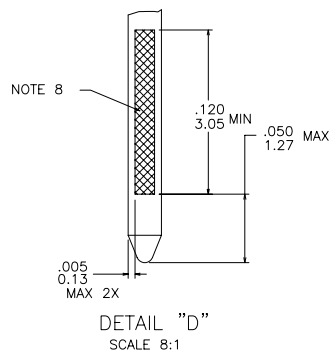
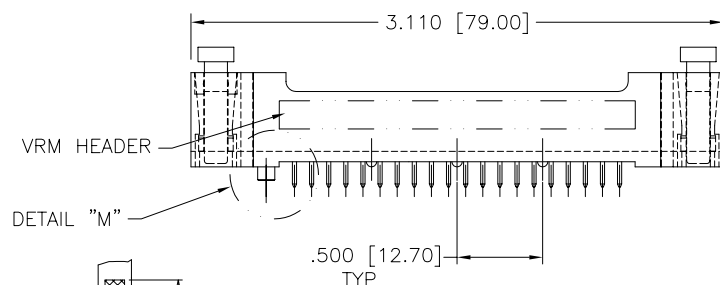
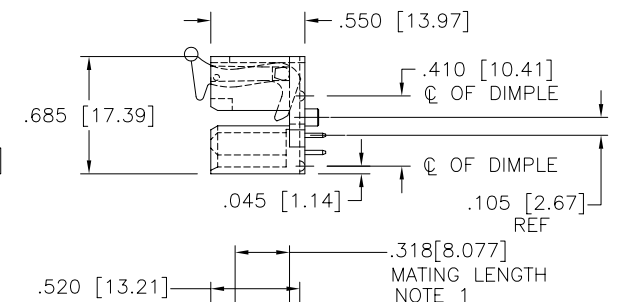
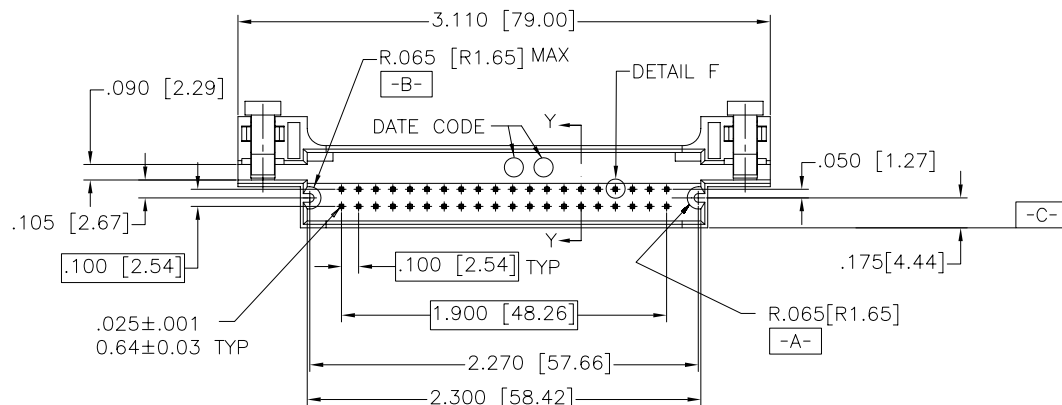
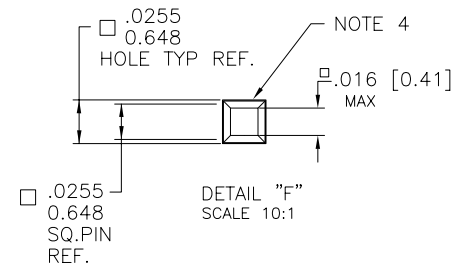
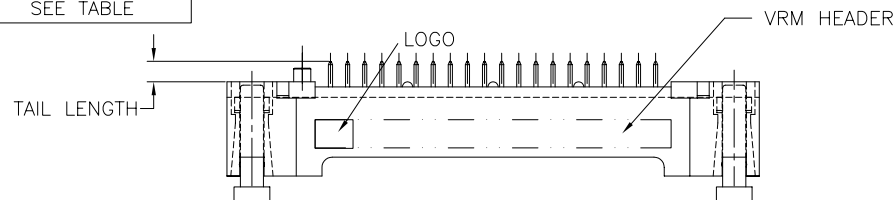






FCIconnect.com

Copyright FCI

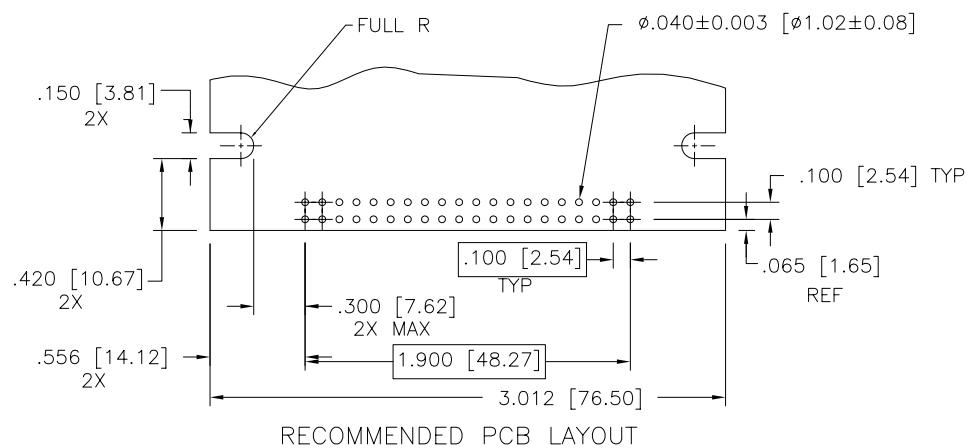
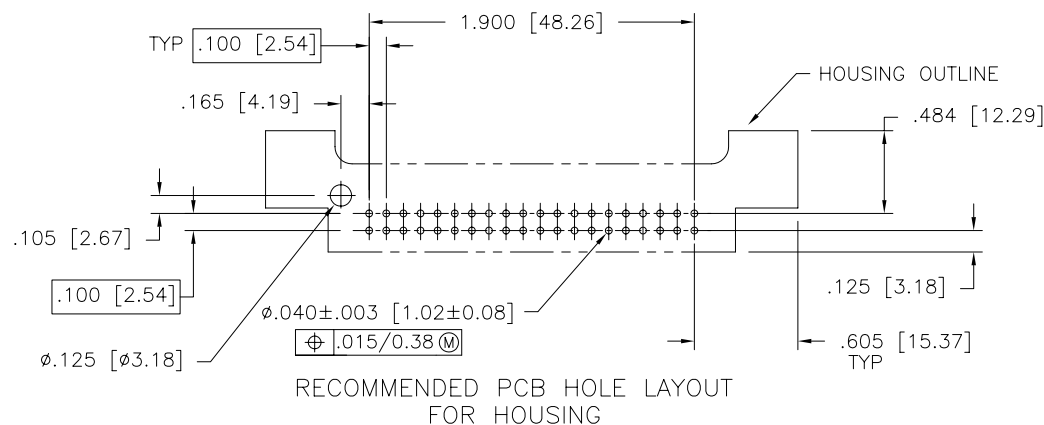
PRODUCT NUMBER
SEE TABLE



mat'l. code				surface ISO 1302 ✓		tolerance ISO 406 ISO 1101		projection 		product family HEADERS					
ltr	ecn no	dr	date	tolerances unless otherwise specified				INCH/MM	title						
L	V82054	EPK	11/12/98	angles		linear	.XX±.01/.3		VRM 8 HEADER ASS'Y						
M	V82161	EPK	12/10/98				.XXX±.005/.13								
N	V91079	EPK	5/10/99	0'±2'			.XXXX±.0020/.051								
P	V01868	MDF	7/31/00	dr	M. CLOUSER	6/12/95			dwg no				sheet 1 of 4		size
R	V03-1222	PJ	11/18/03	enr	L. FYE	6/12/95			95798				A3		
S	V04-0262	HTB	3/18/04	chr	L. FYE	6/12/95									
T	M06-0289	AGS	7/29/06	appd	L. FYE	6/12/95									
sheet index		revision sheet		T	T	T	T								
				1	2	3	4								

form: A3

PRODUCT NUMBER
SEE TABLE



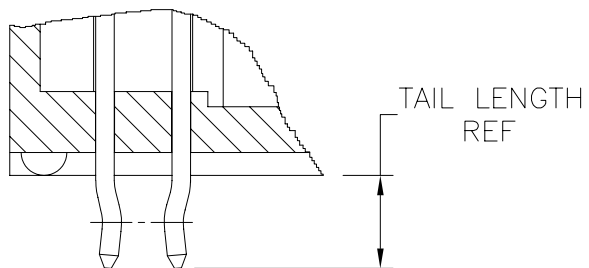
NOTES:

- ① MOLDED MATERIAL: HIGH TEMP RESIN
PER UL 94 V-0
COLOR: PANTONE 4545 (OFF WHITE).
- ② PIN MATERIAL: 3/4 HARD PHOS BRONZE
UNS C51000.
- ③ PIN RETENTION TO BE 3 LB/1.36 KG
MIN IN EITHER DIRECTION.
- ④ SURFACE INDICATED MUST BE PARALLEL TO
DATUM -C- WITHIN $\pm 4^\circ$.
- ⑤ "R" FOLLOWING P/N INDICATES RETENTION
FEATURE.
- ⑥ PRESS FIT PINS 95798-5XX SERIES.
- ⑦ OPTIONAL POLARIZING FEATURE.
- ⑧ CRITICAL CONTACT AREA ON ALL FOUR SIDES.
- ⑩ PACKAGE IN PLASTIC TRAYS.
- ⑪ LUBRICATION - (ZIP-CHEM TO C-26)

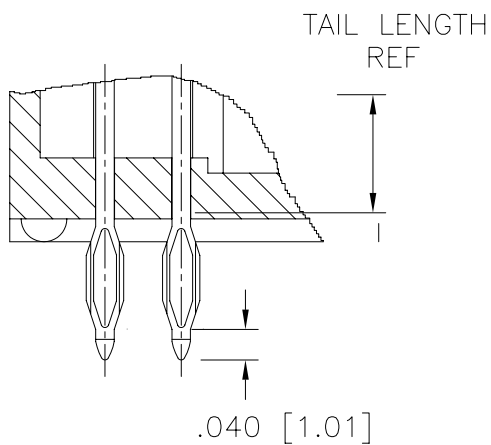
mat'l. code				surface ISO 1302 ✓		tolerance ISO 406 ISO 1101	projection INCH/MM	product family HEADERS			
ltr	ecn	no	dr	date	tolerances unless otherwise specified			title			
T					angles	.XX±.01/.3	INCH/MM	VRM 8 HEADER ASS'Y			
					linear	.XXX±.005/.13					
					0°±2'	.XXXX±.0020/.051	scale 1:1	dwg no 95798			
					dr	M. CLOUSER 6/12/95	FCI				size A3
					enr	L. FYE 6/12/95					sheet2 of 4
					chr	L. FYE 6/12/95					
					appd	L. FYE 6/12/95					
sheet index	revision sheet							type Product Customer Drawing			

PRODUCT NUMBER

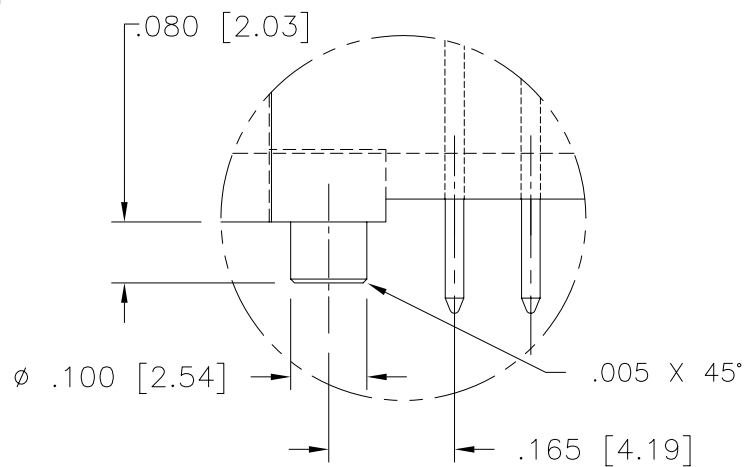
SEE TABLE





DETAIL "G"
ROTATED 90°
SCALE 3:1
NOTE 5



DETAIL "H"
PRESS-FIT TAILS
ROTATED 90°
SCALE 3:1
NOTE 6



DETAIL "M"
SCALE 3:1
NOTE 7

mat'l. code				surface ISO 1302 ✓	tolerance ISO 406 ISO 1101	projection 	product family HEADERS			
ltr	ecn	no	dr	date	tolerances unless otherwise specified		title	VRM 8 HEADER ASS'Y		
T					angles	.XX±.01/.3	INCH/MM			
					linear	.XXX±.005/.13				
					0°±2'	.XXXX±.0020/.051	scale 1:1			
			dr	M. CLOUSER	6/12/95		dwg no	sheet3 of 4	size	
			enr	L. FYE	6/12/95		95798	A3		
			chr	L. FYE	6/12/95					
			appd	L. FYE	6/12/95					
sheet index	revision sheet						type	Product	Customer	Drawing

form: A3



FCIconnect.com

Copyright FCI

PRODUCT NUMBER	CONTACT PLATING	TAIL LENGTH	TAIL PLATING	POLARIZING PEG	LUBRICATION NOTE 11
95798-001			U N A V A I L A B L E		
-002	15u"/0.38 GXT OVER 50u"/1.27u Ni	.122/3.10	15μ"/0.38μ GXT OVER 50μ"/1.27μ Ni	NO	NO
-003			U N A V A I L A B L E		
-011			U N A V A I L A B L E		
-012			U N A V A I L A B L E		
-201			U N A V A I L A B L E		
-202			U N A V A I L A B L E		
-203			U N A V A I L A B L E		
-204			U N A V A I L A B L E		
-301			U N A V A I L A B L E		
95798-502			U N A V A I L A B L E		

mat'l. code				surface ISO 1302 ✓	tolerance ISO 406 ISO 1101	projection 	product family HEADERS
ltr	ecn	no	dr	date	tolerances unless otherwise specified		title
T					angles	.XX±.01/.3	VRM 8 HEADER ASS'Y
					linear	.XXX±.005/.13	
					0°±2'	.XXXX±.0020/.051	
					dr	M. CLOUSER 6/12/95	dwg no 95798 sheet 4 of 4 size A3
					enr	L. FYE 6/12/95	
					chr	L. FYE 6/12/95	
					appd	L. FYE 6/12/95	
sheet index	revision sheet						type Product Customer Drawing

form: A3