

PRODUCT NUMBER

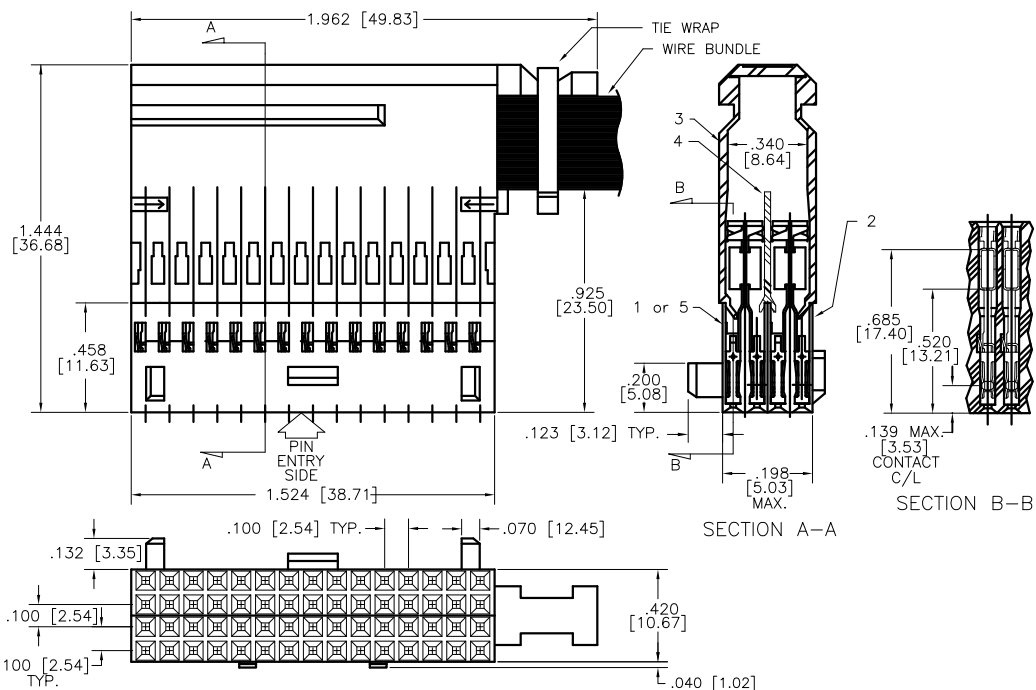
A0326963

A0326963LF

A0360645

OBSOLETE

OBSOLETE



FEATURES:



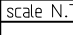
- * .100" (2.54 mm) GRID - 4 ROWS
- * 30 OR 60 CONTACTS
- * MADE FROM 2 RECEPTACLES, ASSEMBLED WITH INSIDE AND OUTSIDE COVER AFTER WIRING
- * 90° PADDLE FOR SIDE WIRE MANAGEMENT
- * TIE-WRAP RETENTION CLIP FOR WIRE BUNDLING
- * BIFURCATED CONTACT DESIGN (N/S ORIENTATION)
- * SELECTIVELY PLATED GOLD CONTACT
- * POLARIZED KEYING FEATURES ON BODY
- * IDC WITH STRAIN RELIEF FOR 24-26 AWG WIRE
- * INTENDED FOR USE WITH .025/0.64 SQUARE PINS

ASSOCIATED COMPONENTS:

- * APPLICATION TOOLING
NT-230 DESKTOP SEMI-AUTOMATIC CRIMPING MACHINE
HT-138F CRIMPING HAND TOOL
- * EXTRACTION TOOL: SEE DRAWING 54375
- * LATCH, (2) USED WITH 4x46 SHROUD: P0668582
- * COMPLIANT TAIL STRIP HEADERS: SEE DRAWING 54350

OPTIONS:

- * EACH OF THE TWO RECEPTACLES AVAILABLE SEPARATELY

mat'l. code SEE NOTE 1				surface ASME Y14.5 ✓		tolerance ASME Y14.5		projection 		product family NORCON			
ltr	ecm no	dr	date	tolerances unless otherwise specified				INCH/MM		title CABLE CONNECTORS CID07 4x15 .100" GRID			
D	V05-0881	HTB	2005-09-16	angles		xxx+.005/XX+.13	scale N.T.S.						
E	V06-0087	HTB	2006-01-27										
F	V06-0662	JRV	2006-07-07						dwg no sheet 1 of 3 54314 type CUSTOMER Drawing				
G	V06-0988	HTB	2006-09-26	dr	T. BREWBAKER	2005-09-16							
H	V09-0115	HTB	2009-03-23	engr	T. BREWBAKER	2005-09-16							
				chr	T. BREWBAKER	2005-09-16							
				appd	T. BREWBAKER	2005-09-16							
sheet index		revision		H	H	H							
		sheet		1	2	3							

PRODUCT NO.	ENG. CODE	DESCRIPTION	ITEMS INCLUDED
A0326963	CID07DA60B00	60 POSITIONS (4x15)	1, 2, 3, 4
A0326963LF		60 POSITIONS (4x15)	1, 2, 3, 4
A0360645	CID07DA60ABP1	30 POSITIONS (4x15) ITEM 5 WITHOUT CONTACTS	2, 3, 4, 5
F0000014		60 POSITIONS (4x15)	2, 2, 3, 4
F0000014LF		60 POSITIONS (4x15)	2, 2, 3, 4

ASSOCIATED COMPONENTS INCLUDED:

ITEM	DESCRIPTION
1	FRONT CONNECTOR ASSEMBLY
2	BACK CONNECTOR ASSEMBLY
3	OUTSIDE COVER
4	INSIDE COVER
5	ITEM 1 WITHOUT TERMINAL

NOTES:

SPECIFICATIONS—MECHANICAL:

- * INSERTION FORCE — 150 G/CONTACT MAX
- * WITHDRAWAL FORCE: 20 G/CONTACT MIN
- * CONTACT RETENTION: 1200 G/CONTACT MIN
- * CONTACT NORMAL FORCE: 120 G/CONTACT MIN
- * DURABILITY — 200 CYCLES
- * OPERATING TEMPERATURE: -55°C TO +85°C

SPECIFICATIONS—ELECTRICAL:

- * CURRENT RATING(CONTINUOUS): 1 AMP/CONTACT MAX
- * CONTACT RESISTANCE: 20 MILLIOHMS MAX
- * INSULATION RESISTANCE: 5000 MEGOHMS MIN
- * DIELECTRIC WITHSTAND VOLTAGE: 1000V RMS

- ①. HOUSING MATERIAL: PBT, GLASS FIBER REINFORCED,
FLAME RETARDENT PER UL 94V-0,
COLOR: BLACK.

TERMINAL MATERIAL: CA510 ALLOY

CONTACT FINISH: 50u"/1.27u Au
CONTACT UNDERPLATE: 100u"/2.54u Ni
IDC FINISH: 50u"/1.27u Ni
OVERALL UNDERPLATE: 20u"/0.51u Ni

2. PACKAGED IN ANTI-STATIC TRAYS.
- ③. PART NUMBERS WITH AN LF SUFFIX MEET EUROPEAN UNION DIRECTIVES AND OTHER COUNTRY REGULATIONS AS DESCRIBED IN GS-22-008.
4. THIS PRODUCT IS NOT INTENDED TO BE EXPOSED TO MANUFACTURING SOLDER PROCESSES.

mat'l. code SEE NOTE 1		surface ASME Y14.5		tolerance ASME Y14.5		projection 		product family NORCON	
ltr	ecm no	dr	date	tolerances unless otherwise specified					
H				angles	fr	to	INCH/MM		
							scale N.T.S.		
		dr	T. BREWBAKER	2005-09-16					
		engr	T. BREWBAKER	2005-09-16					
		chr	T. BREWBAKER	2005-09-16					
		appd	T. BREWBAKER	2005-09-16					
sheet index	revision sheet								

title CABLE CONNECTORS CID07 4x15 .100" GRID		dwg no 54314		sheet 3 of 3		size A4	
type CUSTOMER Drawing							