



Series 810 and 822 Economy Model Vertisocket™ with Bifurcated Contacts

FEATURES

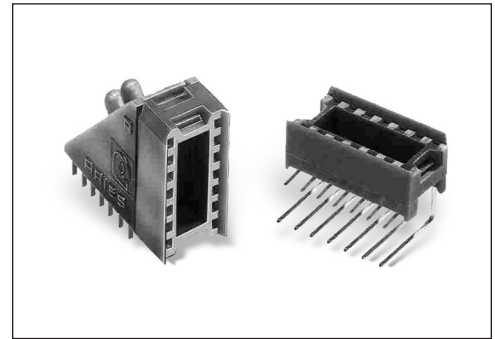
- These low-cost Vertisockets™ are recommended for high-volume vertical display mounting applications
- Very useful for connection of board-to-board jumpers and for DIP switches, as well as LED devices

GENERAL SPECIFICATIONS

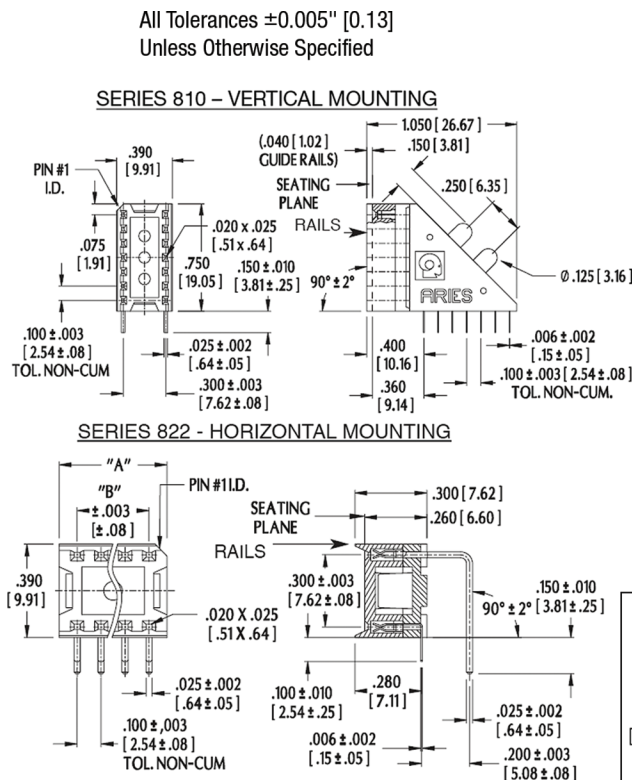
- STANDARD BODY MATERIAL: black UL 94 V-0 4/6 Nylon
- BIFURCATED CONTACTS: Grade-A spring-tempered Phosphor Bronze per QQ-B-750
- STANDARD CONTACT PLATING: 50μ [1.27μ] min. matte Sn per ASTM B545-97 over 50μ [1.27] Ni per QQ-N-290 (TL = 90/10 Sn/Pb per MIL-T-10727 Type 1 over 50μ [1.27] Ni per QQN-290)
- CONTACT CURRENT RATING: 1 amp
- OPERATING TEMPERATURE: 221°F [105°C]
- INSERTION FORCE: 110g/pin average
- WITHDRAWAL FORCE: 75g/pin average
- ACCEPTS FLAT LEADS: up to 0.014 [0.36] thick and 0.020 [0.51] wide
- ACCEPTS ROUND LEADS: up to 0.020 [0.51] dia.
- ACCEPTS LEAD LENGTHS: 0.75-0.160 [1.91-4.06] dia.

MOUNTING CONSIDERATIONS

- SUGGESTED PCB HOLE SIZE : For P/N 14-810-90R = 0.036 ±0.002 [0.91 ±0.05] dia.
: For P/N XX-822-90E = 0.044 ±0.002 [1.12 ±0.05] dia.



CUSTOMIZATION: In addition to the standard products shown on this page, Aries specializes in custom design and production. Special materials, platings, sizes, and configurations can be furnished, depending on the quantity. **NOTE:** Aries reserves the right to change product general specifications without notice.



ORDERING INFORMATION

14-810-90R XXXX

Pin Count
(see Table)
Series
Display Angle

Options

WR = Without Rails

TL = Sn/Pb

WRTL = Without Rails Sn/Pb

ORDERING INFORMATION

XX-822-90 E XXXX

Pin Count
(see Table)
Series
Display Angle
Economy Version

Options

WR = Without Rails

TL = Sn/Pb

WRTL = Without Rails Sn/Pb

OTHER SIZES AVAILABLE – CONSULT FACTORY

No. of Pins	Dim. "A"	Dim. "B"
8	8.450 [11.43]	0.300 [7.62]
14	14.750 [19.05]	0.600 [15.24]
16	16.850 [21.59]	0.700 [17.78]
18	18.950 [24.13]	0.800 [20.32]
20	20.1050 [26.67]	0.900 [22.86]



ARIES
ELECTRONICS, INC.

Bristol, PA 19007-6810 USA
TEL (215) 781-9956 • FAX (215) 781-9845
WWW.ARIESELEC.COM • INFO@ARIESELEC.COM



PRINTOUTS OF THIS DOCUMENT MAY BE OUT OF DATE AND SHOULD BE CONSIDERED UNCONTROLLED

13003
Rev. AA

Mouser Electronics

Authorized Distributor

Click to View Pricing, Inventory, Delivery & Lifecycle Information:

Aries:

16-822-90E