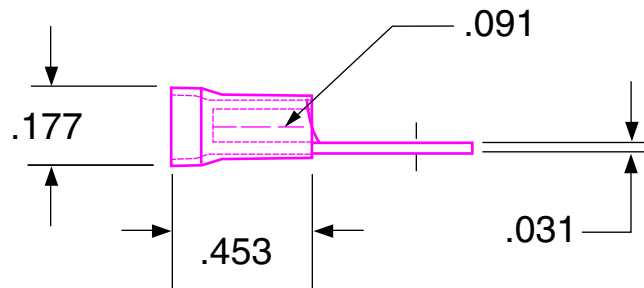
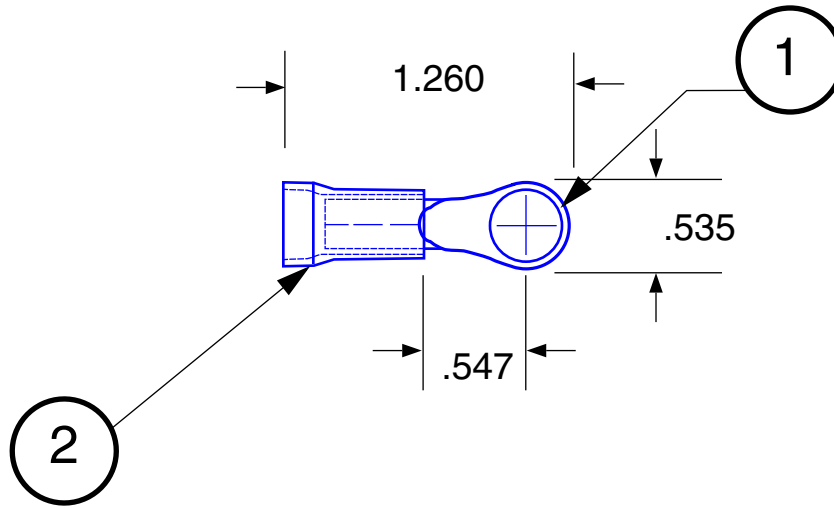


Ring Terminal - insulated  
Part No: FVL1614-9R2

STUD SIZE #3/8

SYM.	CHANGES	BY	DATE



Max Electric Current: 16-14 AWG : 27 Amp  
Max Electric Rating: 75° C / 600 V Max  
Tolerance ±.020



**HOFFMAN PRODUCTS**

20700 Hubbell Avenue, Oak Park, MI 48237

Tel: 1-800-645-2014 • Fax: 1-800-908-1295

Web: www.hoffmanproducts.com

NO.	1	2	3
NAME	TERMINAL	INSULATOR	FUNNEL ENTRY
MAT'L.	COPPER	VINYL	
REMARKS	TIN-PLATED	BLUE	
APPROVED BY:	CHECKED BY:	DRAWN BY:	

DATE:	TITLE: <b>RING TERMINAL</b>		
SCALE: <b>FREE</b>	PART NO. <b>FVL1614-9R2</b>		
DRAWING NO. <b>H1503</b>	PART NAME		ISSUE

HOFFMAN CADFILE