

K Series

General Purpose RFI Power Line Filters
Best Buy for High Impedance Load
20, 30, 40A Models

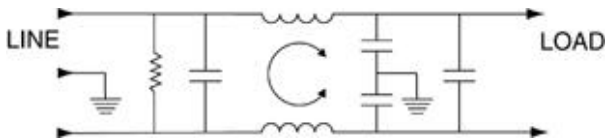


UL Recognized
CSA Certified
VDE Approved

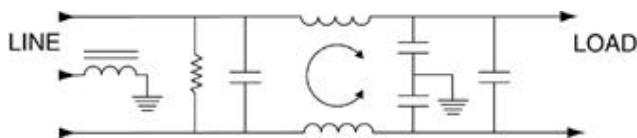
K Series

The K series RFI power line filters are general purpose common-mode and differential-mode filters. They are effective in the control of line-to-line as well as line-to-ground RFI interference. The K series RFI filters are particularly suited in applications where pulsed, continuous and/or intermittent RFI interference is present. The EK models meet the very low leakage current requirements of VDE portable equipment, and (120 Volt) UL544 nonpatient medical equipment.

Electrical Schematics



30VK6C Model (Inductor in Ground Line)



Resistor location for reference only.



Specifications

Maximum leakage current, each line-to-ground	VK Models	EK Models
@ 120 VAC 60 Hz:	.4 mA	.21 mA
@ 250 VAC 50 Hz:	.7 mA	.36 mA

HiPot rating (one minute):	
line-to-ground	2250 VDC
line-to-line	1450 VDC

Operating frequency:	50/60 Hz
----------------------	----------

Rated voltage:	120/250 VAC
----------------	-------------

Rated current:	@120 VAC	@ 250 VAC
20VK/20EK	20A	16A
30VK6/30VK6C	30A	25A
40VK6/40VK6C	40A	36A

Minimum insertion loss in dB:
Line-to-ground in 50 ohm circuit

Current Rating	.15	.5	1	5	10	30
Frequency-MHz						

VK Models

20A, 30A, 40A	6	19	28	42	45	50
---------------	---	----	----	----	----	----

EK Models

20A	8	19	25	38	40	45
-----	---	----	----	----	----	----

Line-to-line in 50 ohm circuit

Current Rating	.15	.5	1	5	10	30
Frequency-MHz						

VK Models

20A	6	6	30	50	30	30
30A	2	40	60	65	57	55
40A	2	40	60	65	57	55

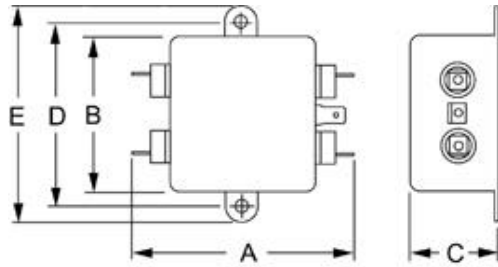
EK Models

20A, 30A	6	6	30	50	30	30
----------	---	---	----	----	----	----

Case Styles

Metric shown in italics.

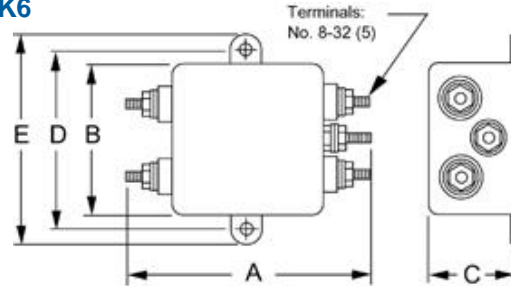
20EK1/20VK1



Typical dimensions

Terminals: $\frac{.250}{6.35}$ (5) Holes: $\frac{.07}{1.8}$ Dia. (4) Slot: $\frac{.07 \times .16}{1.8 \times 4.1}$ Mounting holes: $\frac{.188}{4.78}$ Dia. (2)

20VK6

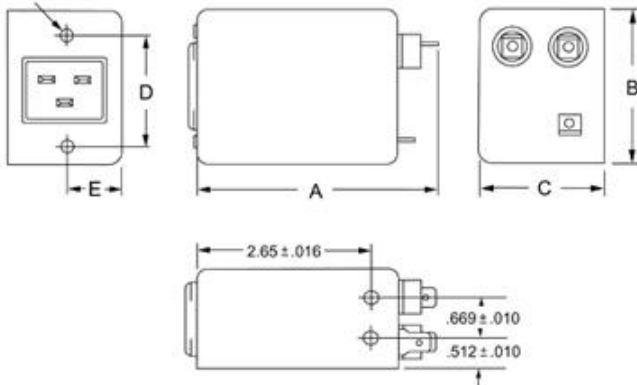


Typical dimensions

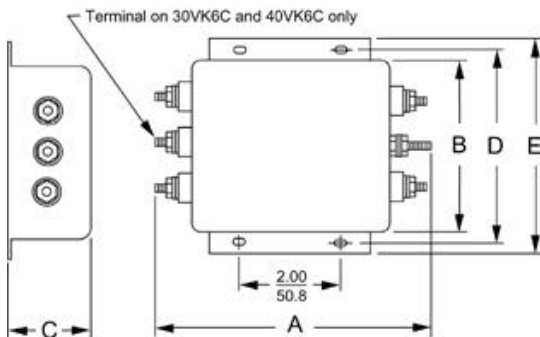
Mounting holes: $\frac{.188}{4.78}$ Dia. (2) Torque: 18 ± 2 in.lb.

20VK7

Insert (4): 6-32



30VK6 & 30VK6C, 40VK6 & 40VK6C



Typical Dimensions

Mounting holes: $\frac{.188}{4.78}$ Dia. (2) Slots: $\frac{.250}{6.35} \times \frac{.156}{3.96}$ (4) Terminals: No. 8-32 (5)

Torque: 18 ± 2 in.lb.

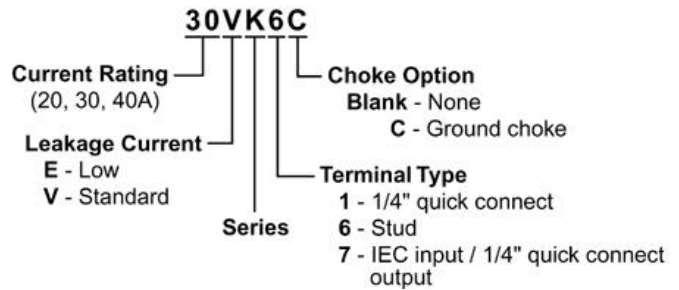
Case Dimensions

Metric shown in italics.

Part No.	A (max)	B (max)	C (max)	D $\pm .015$ $\pm .38$	E (max)
20VK1, 20EK1	$\frac{3.35}{85.1}$	$\frac{2.56}{65.0}$	$\frac{1.53}{38.9}$	$\frac{2.938}{74.63}$	$\frac{3.35}{85.1}$
20VK6	$\frac{3.46}{87.9}$	$\frac{2.56}{65.0}$	$\frac{1.53}{38.9}$	$\frac{2.938}{74.63}$	$\frac{3.35}{85.1}$
20VK7	$\frac{3.8}{96.52}$	$\frac{2.28}{57.9}$	$\frac{1.78}{50.8}$	$\frac{1.575}{40.39}$	$\frac{.846 \pm .01}{21.49 \pm .25}$
30VK6	$\frac{5.34}{135.6}$	$\frac{3.38}{85.9}$	$\frac{1.53}{38.9}$	$\frac{3.75}{95.25}$	$\frac{4.2}{106.7}$
30VK6C	$\frac{5.34}{135.6}$	$\frac{3.38}{85.9}$	$\frac{1.53}{38.9}$	$\frac{3.75}{95.25}$	$\frac{4.2}{106.7}$
40VK6	$\frac{5.34}{135.6}$	$\frac{3.38}{85.9}$	$\frac{1.53}{38.9}$	$\frac{3.75}{95.25}$	$\frac{4.2}{106.7}$
40VK6C	$\frac{5.34}{135.6}$	$\frac{3.38}{85.9}$	$\frac{1.53}{38.9}$	$\frac{3.75}{95.25}$	$\frac{4.2}{106.7}$

Ordering Information

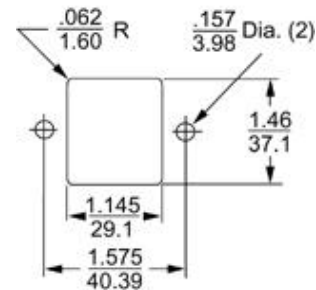
Consult your local Corcom sales representative for pricing.



Available Part Numbers

20VK1	30VK6
20EK1	30VK6C
20VK6	40VK6
20VK7	40VK6C

Recommended Panel Cutout



Panel Cutout (back mount)