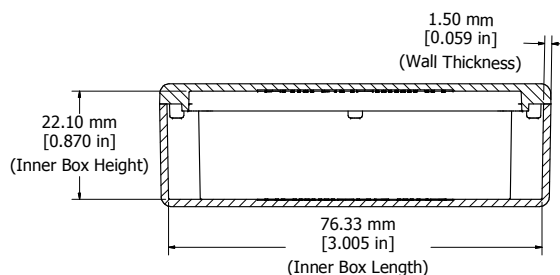
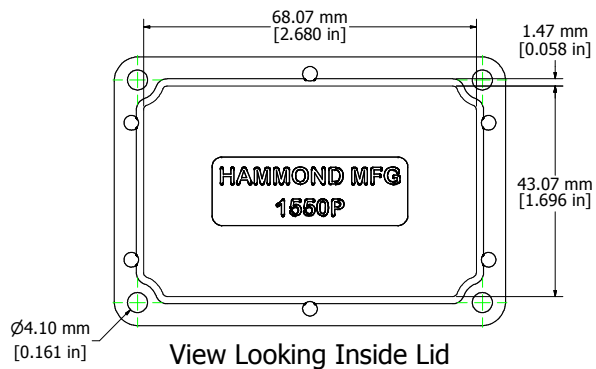


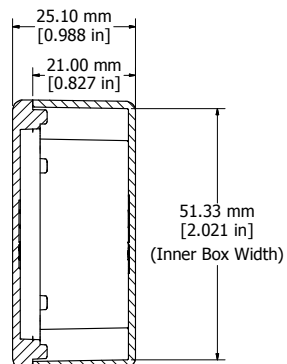
Top View of Assembly



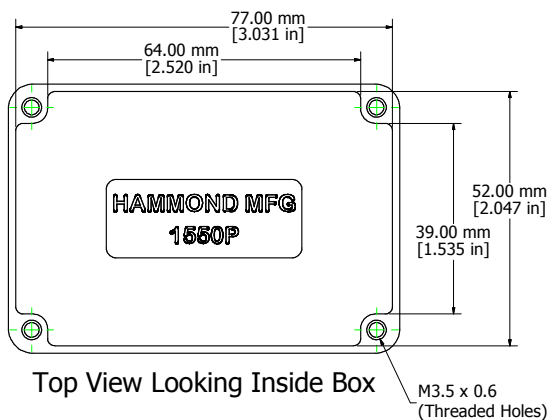
SECTION A-A
Side View of Assembly



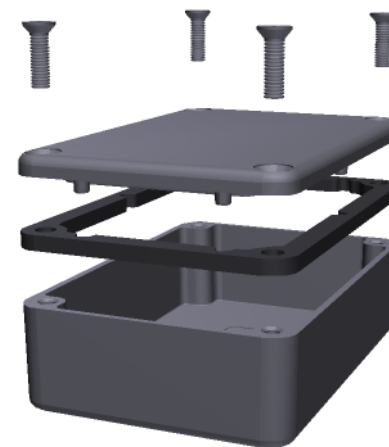
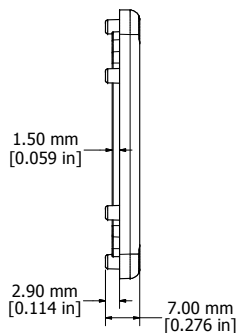
View Looking Inside Lid



SECTION B-B
End View of Assembly



Top View Looking Inside Box



Enclosures can be Factory Modified (Milling, Drilling, Printing etc.)
Contact Factory mjm@hammondmfg.com for quotes
Solid models of this enclosure available in STEP or IGES.

NOTE

Purchased assembly includes box, lid, and 4 cover screws.
Box and lid are made from Diecast Aluminum Alloy.
EVA Foam Gasket supplied with Liquid Resistant Enclosures

PART NUMBERS

| 1550P Enclosure | |
|---|-----------|
| Unfinished | 1550P |
| Black Textured Polyester Powder Paint | 1550PBK |
| 1550WP Liquid Resistant Enclosure | |
| Unfinished | 1550WP |
| Black Textured Polyester Powder Paint | 1550WPBK |
| Accessories | |
| Recommended Torque: 75 ozf.in / 55 cN.m | |
| Unfinished Cover Screws (Pkg 100) [M3.5 x 0.6 18-8 SS] | 1550MS100 |



Mouser Electronics

Authorized Distributor

Click to View Pricing, Inventory, Delivery & Lifecycle Information:

[Hammond:](#)

[1550WP](#) [1550WPBK](#)