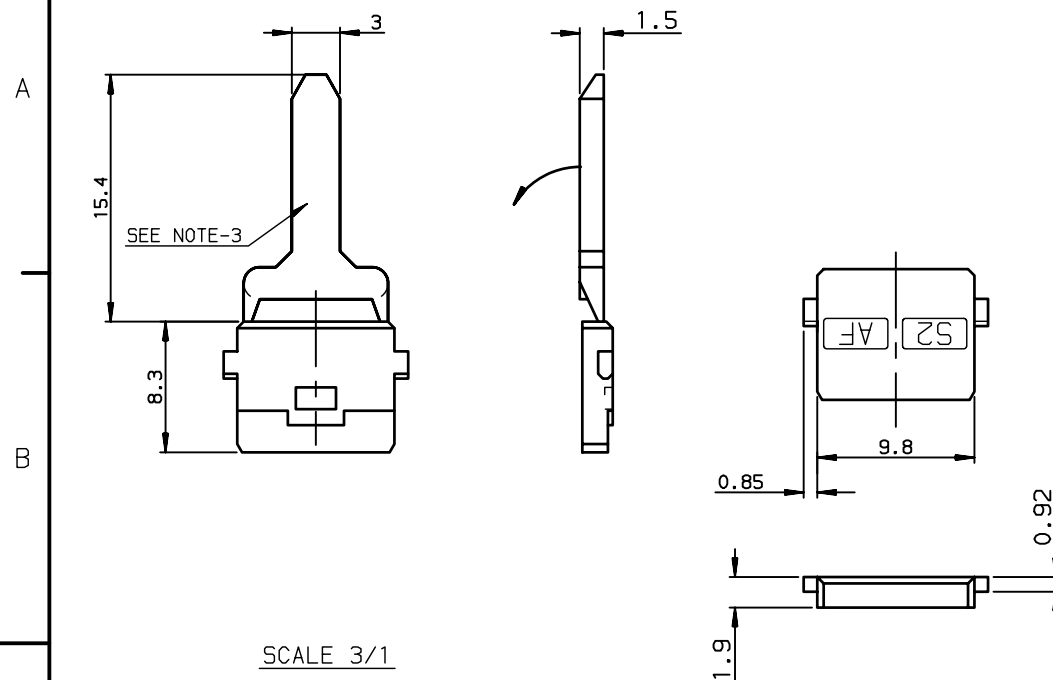


SINGLE KEY - TYPE S2AF

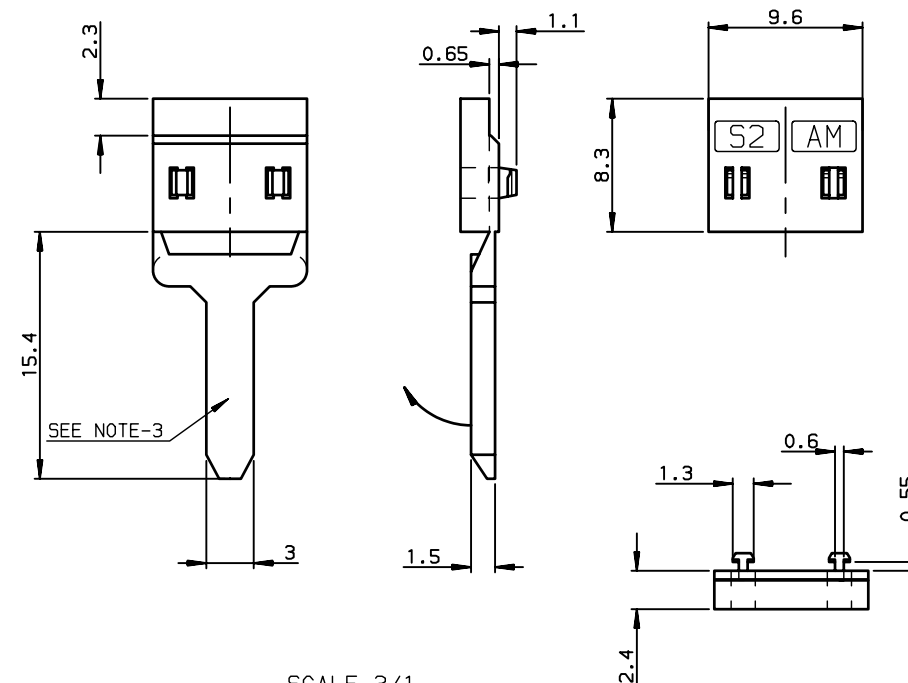
P/N: HM13017



SCALE 3/1

SINGLE KEY - TYPE S2AM

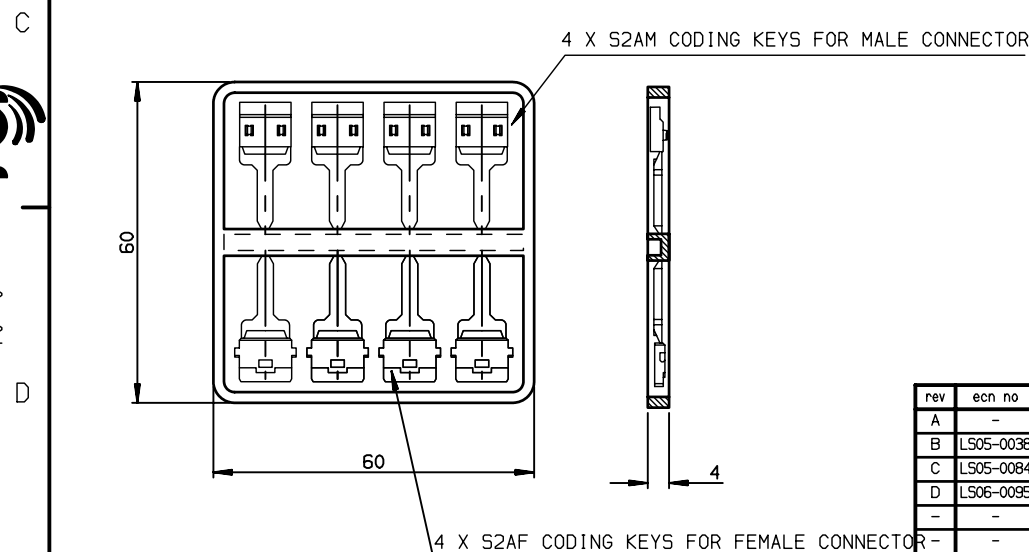
P/N: HM13013



SCALE 3/1

S2AF/S2AM CODING KEY KIT

P/N: HM13056



4 X S2AF CODING KEYS FOR FEMALE CONNECTOR

NOTE-1: MATERIAL = LCP

NOTE-2: SINGLE KEYS ARE DELIVERED IN PLASTIC BAG (QTE = 100)




NOTE-3: HOLDER FOR EASIER MOUNTING IN CONNECTOR HOUSING

NOTE-4: THESE KEYS ARE NOT COMPATIBLE WITH CABLE CONNECTOR LATCH

NOTE-5: EFFECTIVE CODING UP TO 8.00mm MATING LENGTH

NOTE-6: KEYS TYPE S2AF OR S2AM FORBID CONNECTOR MATING IN ALL CASES

European Views

www.fciconnect.com			surface ISO 1302		tolerance std ISO 406 ISO 1101		projection 		mm 		
			TOLERANCES UNLESS OTHERWISE SPECIFIED								
Dr	ROULLIARD	1995/01/03	ANGULAR	LINEAR	0.X	±0.1	size A3	Scale 1:1			
Eng	TARON	1995/01/03			0.XX	±0.1					
Chr	LEGARE	1995/01/03			0.XXX	±0.1					
Appr	LEGARE	1995/01/03	Product family				METRAL	Spec ref -			
			HM1-CODING KEYS - BOARD TO BOARD				cat no	C-8626-0262			Rev. D
			(MATING LENGTH 8 mm) COLOUR GREEN								
			catalog no								
							CUSTOMER		sheet 1 of 1		