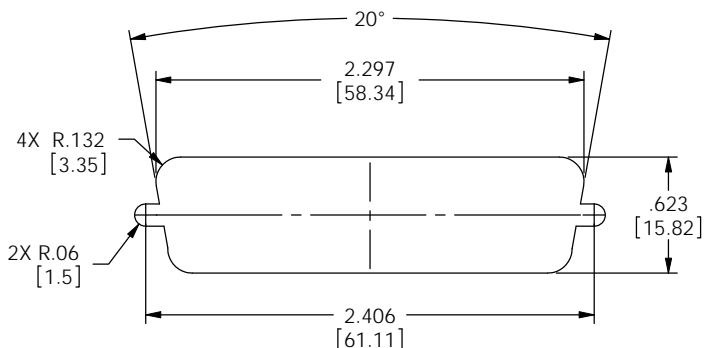


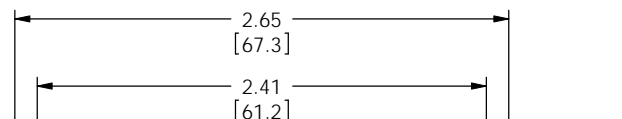
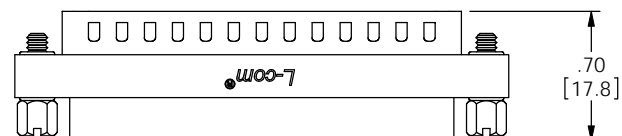
THE INFORMATION CONTAINED IN THIS DRAWING IS THE SOLE PROPERTY OF L-COM, INC. ANY REPRODUCTIONS IN PART OR WHOLE WITHOUT THE WRITTEN PERMISSION OF L-COM, INC. IS PROHIBITED.

REVISIONS			
REV	DESCRIPTION	DATE	CHANGED BY
G	ECN 4564-ADDED ROHS, UPDATED DRAWING AND NEW FORMAT	3/3/10	D.FRISIELLO
H	ECN 5937-ADDED NOTE FOR PANEL MOUNTING	1/24/12	D.FRISIELLO



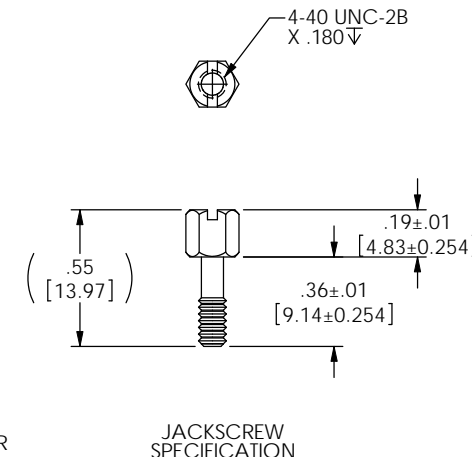
RECOMMENDED PANEL OPENING  
(MAX PANEL THICKNESS: 0.06")

**NOTE: DIFFERENT STANDOFFS AND JACK SCREWS  
ARE REQUIRED FOR PANEL MOUNTING.  
SEE WWW.L-COM.COM OR MASTER CATALOG FOR DETAILS.**



POSITION 1

78 PIN FEMALE  
HIGH DENSITY  
D-SUB CONNECTOR



#### NOTES:

MATERIAL:  
SHELL: STEEL  
CONTACTS: COPPER ALLOY  
HARDWARE: BRASS  
INSULATOR: PBT FIBER REINFORCED (UL94V-0 RATED)

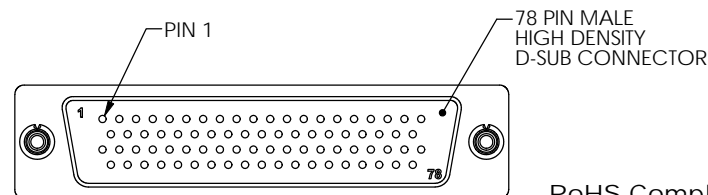
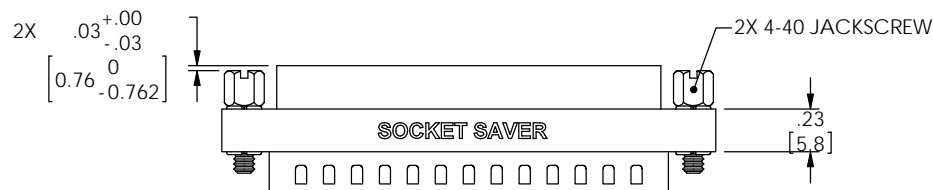
FINISH:  
SHELL: TIN/NICKEL PLATED  
CONTACTS: GOLD FLASH PLATED  
HARDWARE: NICKEL PLATED

ELECTRICAL:  
CURRENT RATING: 3 AMP

MISCELLANEOUS:  
OPERATING TEMPERATURE RANGE: -55°C TO +105°C.  
ALL CONTACTS ARE WIRED STRAIGHT THROUGH.  
COMPONENT SHALL BE TESTED FOR CONTINUITY.

LABELING:  
PANTONE 2945 BLUE. "L-COM" FONT MyriaMM ITALIC.  
"GENDER CHANGER" FONT ARIAL BOLD, TEXT HEIGHTS: .085"  
TEXT COLOR: WHITE.

PACKAGING:  
COMPONENT SHALL BE INDIVIDUALLY PACKAGED IN  
ACCORDANCE WITH L-COM SPECIFICATION PS-0031.



RoHS Compliant ✓

UNLESS OTHERWISE SPECIFIED, DIMENSIONS ARE IN INCHES (mm)	
APPROVALS	DATE
DRAWN BY D. PARHAM	03/01/2002
CHECKED BY T. CLARK	11/08/2001
APPROVED BY R. CARRICK	03/01/2002
DIMENSIONAL TOLERANCES: X = ±.1 XX = ±.01 XXX = ±.005	
ANGULAR TOLERANCES: ALL = ± 1°	
PROJECTION	
CONFIGURATION DETAILS OF UNDIMENSIONED FEATURES MAY VARY COLOR VARIATIONS MAY OCCUR	

		45 BEECHWOOD DRIVE NORTH ANDOVER, MA 01845	
CATEGORY		D-SUBMINIATURE	
PRODUCT DESCRIPTION			
SOCKET SAVER, HD78 FEMALE/MALE			
SIZE	FS/CM NO.	DWG. NO.	REV.
<b>B</b>	<b>43321</b>	<b>DGBH78MF</b>	
SCALE: 2:1		CAD FILE: DGBH78MF.SLDRAW	SHEET 1 OF 1