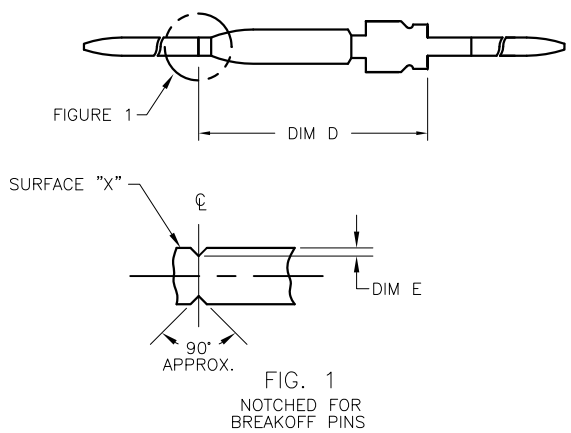
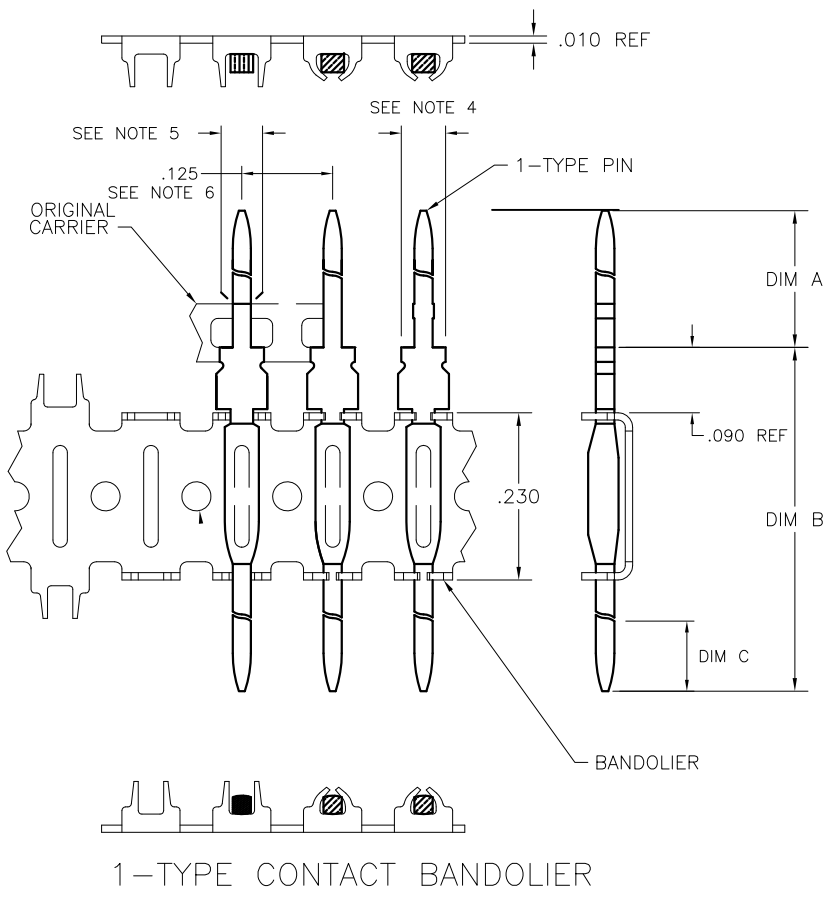


PRODUCT NUMBER	DIM. A	DIM. B	DIM C WIREWRAP AREA PLATING	DIM D NOTCH LOCATION	DIM E NOTCH DEPTH	
1B-1A-B	.505	.940	None	—	—	
1B-2A-B	.555	.940	None	—	—	NOT AVAILABLE
1B-3A-B	.505	.940	.200	—	—	
1B-4A-B	.555	.940	.200	—	—	
1B-9A-B	.400	.940	.200 Ni	.325±.005	.0045±.0005	
1B-10A-B	.480	.940	.200 Ni	.325±.005	.0045±.0005	
1B-13A-B	.555	.940	.200 Ni	.325±.005	.0045±.0005	NOT AVAILABLE
1B-14A-B	.605	.940	.200	—	—	
1B-15A-B	.505	.940	.200 Ni	.325±.005	.0045±.0005	NOT AVAILABLE
1B-16A-B	.605	.940	.200 Ni	.325±.005	.0045±.0005	
1B-20A-B	.555	.695	.250	—	—	NOT AVAILABLE
1B-21A-B	.505	.695	.250	—	—	NOT AVAILABLE
1B-22A-B	.605	.695	.250	—	—	NOT AVAILABLE
1B-23A-B	.555	.695	None	—	—	NOT AVAILABLE
1B-24A-B	.505	.695	None	—	—	NOT AVAILABLE
1B-25A-B	.605	.695	None	—	—	NOT AVAILABLE
1B-26A-B	.555	.695	.250 Ni	.325±.005	.0045±.0005	
1B-27A-B	.505	.695	.250 Ni	.325±.005	.0045±.0005	NOT AVAILABLE
1B-28A-B	.605	.695	.250 Ni	.325±.005	.0045±.0005	NOT AVAILABLE
1B-29A-B	.555	.695	.250 Ni	.460±.005	.0060±.0005	NOT AVAILABLE
1B-30A-B	.505	.695	.250 Ni	.460±.005	.0060±.0005	NOT AVAILABLE
1B-31A-B	.555	1.085	.330	—	—	
1B-32A-B	.555	.940	.200 Ni	.480±.005	.0060±.0005	
1B-33A-B	.605	.940	.200 Ni	.480±.005	.0060±.0005	NOT AVAILABLE
1B-34A-B	.505	.940	.200 Ni	.480±.005	.0060±.0005	
1D-4A-B	.555	.695	.250	.091±.005	.0045±.0005	NOT AVAILABLE

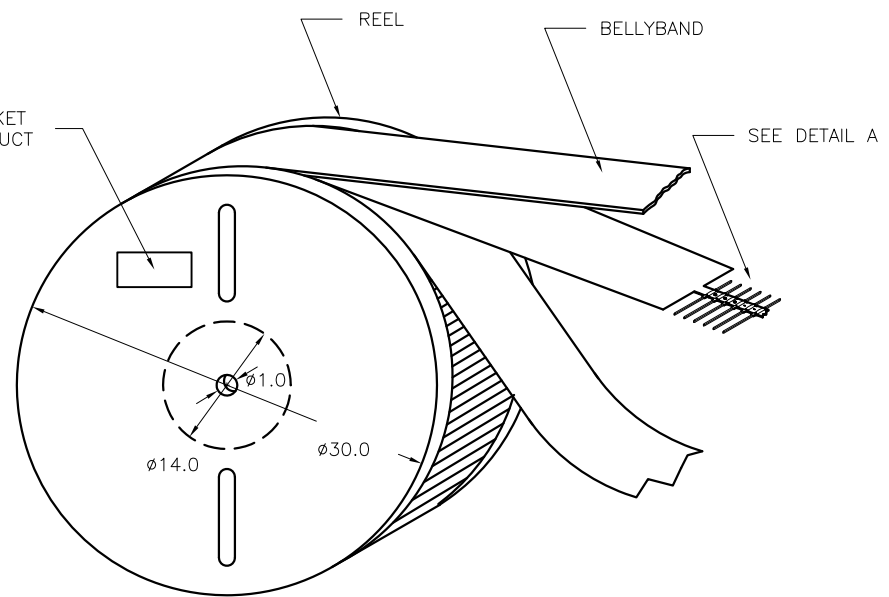


mat'l. code				surface		tolerance		projection		product family	
SEE NOTE 1				✓				INCH		FASTECH	
ltr	ec'n no	dr	date	tolerances unless otherwise specified						title	
A	v03-0079	HTB	2006-01-16	angles	linear	.XX±.01				1-TYPE CONTACT ON BANDOLIER	
B	v03-0177	HTB	2003-02-12			.XXX±.003				dwg no	
C	v06-0486	HTB	2006-05-19	0'±2'		.XXXX±.0020		scale N.T.S.		sheet 1 of 2	
D	v06-0592	HTB	2006-06-16	dr	T. BREWBAKER	2003-01-16				size	
E	v08-0400	HTB	2008-09-29	engr	T. BREWBAKER	2003-01-16				A3	
F	v09-0135	HTB	2009-03-27	chr	T. BREWBAKER	2003-01-16				type	
				appd	T. BREWBAKER	2003-01-16				Product Customer Drawing	
sheet index		revision sheet		F	F						
				1	2						

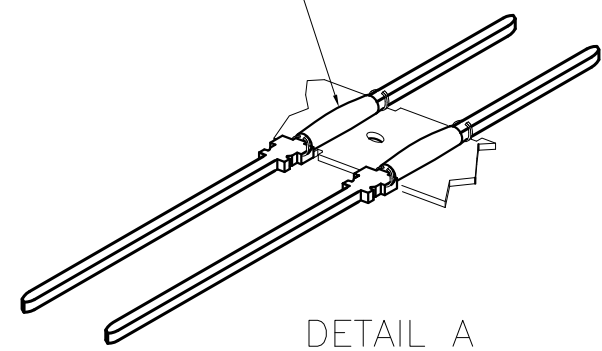
FCJ
FCconnect.com
Copyright FCJ

PRODUCT NUMBER
SEE TABLE

PACKAGING TICKET
PLATED PRODUCT
TCS PART #






OPEN SIDE OF "C" DOWN



NOTES:

- 1 BANDOLIER MATERIAL: C26000, 1/2 HARD, .010 +/- .0005 THICK.
- 2 PIN RETENTION IN BANDOLIER: 2 LBS MIN, 5 LBS MAX.
- 3 1-TYPE CONTACTS MAY BE SLIGHTLY LOOSE IN THE BANDOLIER.
- 4 SHOULDER WIDTH AFTER BODY CARRIER REMOVAL SHALL BE .0685 MAX INCLUDING BURRS.
- 5 PIN WIDTH AFTER BODY CARRIER REMOVAL SHALL BE .0285 MAX INCLUDING BURRS.
- 6 BANDOLIERED PIN PROGRESSION TOLERANCE: .002" / INCH
- 7 BANDOLIERED PIN CAMBER FOR 3 FOOT LENGTH: .25 MAX.
- 8 NO SPLICES ARE PERMITTED, NO MORE THAN ONE BREAK PER REEL IS PERMITTED.
- 9 SEE CUSTOMER DRAWING A93KC4040 FOR PLATING AND ADDITIONAL PIN INFORMATION.

mat'l. code SEE NOTE 1				surface ✓		tolerance		projection 		product family FASTECH			
ltr	ecm no	dr	date	tolerances unless otherwise specified						title			
F				angles		linear	.XX±.01			1-TYPE CONTACT ON BANDOLIER			
							.XXX±.003						
				0°±2°			.XXX±.0020						
							scale N.T.S.						
		dr	T. BREWBAKER	2003-01-16			dwg no		sheet 2 of 2		size		
		engr	T. BREWBAKER	2003-01-16			63501		A3				
		chr	T. BREWBAKER	2003-01-16									
		appd	T. BREWBAKER	2003-01-16									
sheet index		revision sheet								type Product Customer Drawing			

form A3